

1 Monitoring Data

1.1 Monitoring Equipment

Noise	One noise monitoring location currently being used- AN2. The sound meter records in the 1/3 octave band.
Weather Station	The data used for this reporting period was taken from the Terminal Site meteorological station.
TSS	There are TSS meters on the each of discharges on the Siltbuster.
Sondes	The results are displayed graphically.
Discharge pipe flow	The results are displayed graphically.

1.2 Rainfall Data

Date	Rainfall mm
25/08/2011	1.6
26/08/2011	2.4
27/08/2011	5.2
28/08/2011	2.6
29/08/2011	0.0
30/08/2011	0.0
31/08/2011	0.0
Total	11.8

1.3 Summary

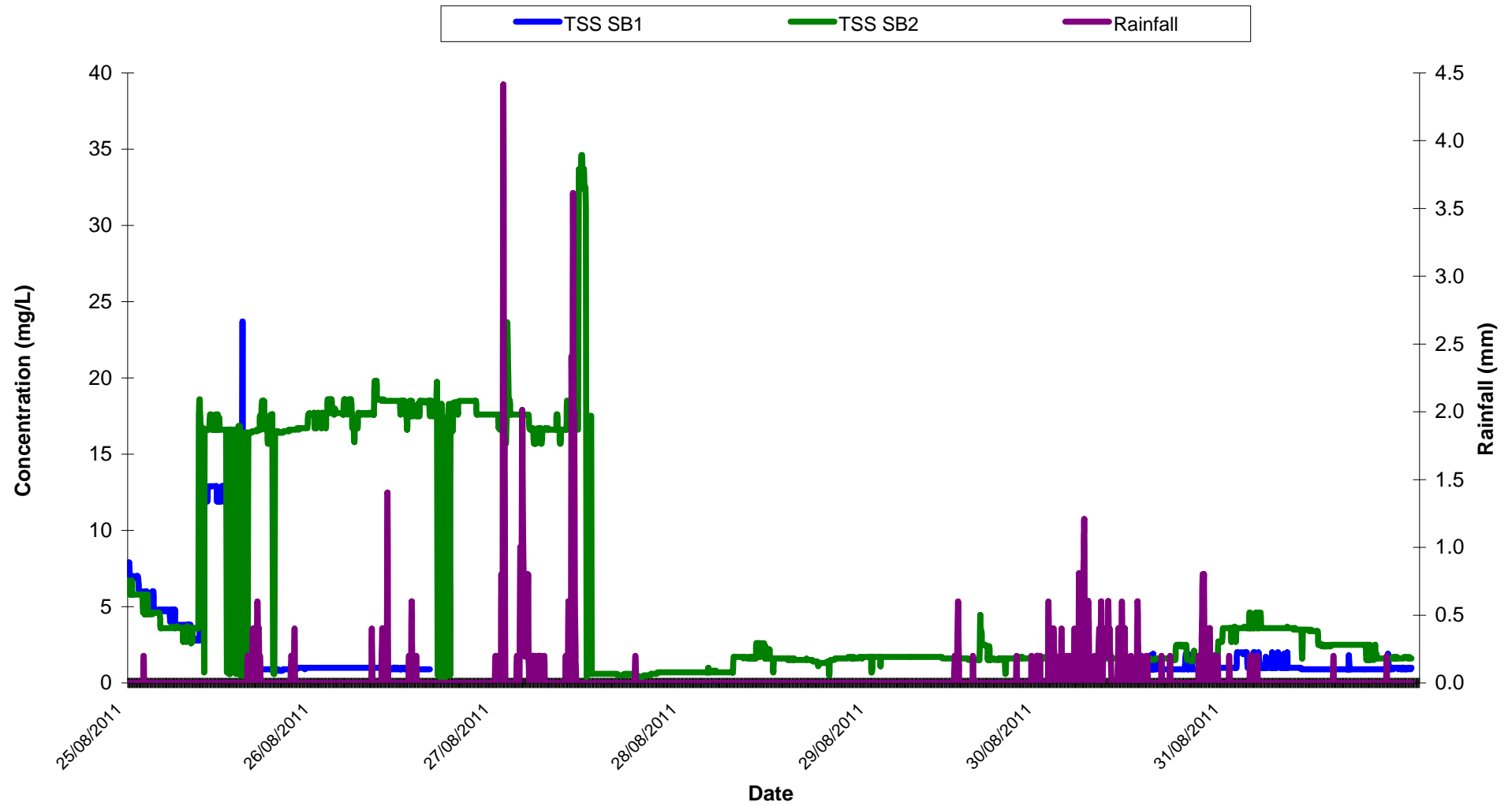
Environment	Comments
Weather	There was a total of 11.8mm of rainfall during the reporting period, with a temperature range of 5.9°C to 17.4°C.
Noise	Noise levels recorded were all within the permitted noise ranges.
Surface Water	Sonde exposure gave elevated results to the pH and conductivity. A chamber is currently being fabricated to accommodate the sonde and eliminate the exposure. Composite results for the inclusion in the monthly report will indicate the water quality. There was a technical error with the TSS meter on SB1 where there is a loss in data.

2 Environmental Exceedances / Incidents / Complaint

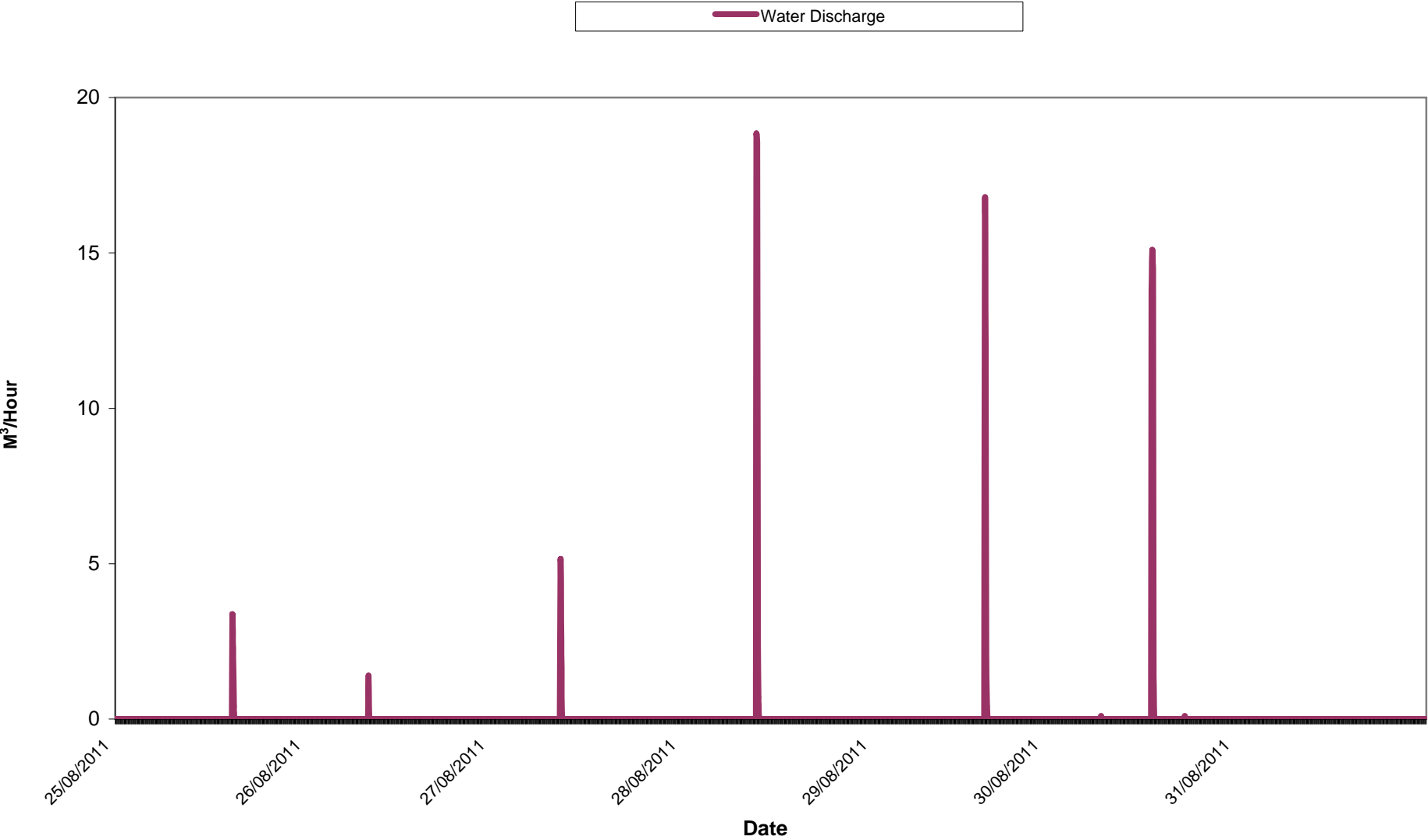
No exceedance during the reporting period.

Day Time Noise Monitoring Record Sheet										
Determinant Results										
Location	Air Temp. (Min)	Air Temp. (Max)	Start Date	Duration	Wind		Results dB			*Comments
					Speed (m/s)*	Direction (Degrees)	L _{Aeq}	L _{Amax}	L _{Amin}	
Action Limit							60.0			
Target Limit							65.0			
AN2	8.7	12.6	25/08/2011	01:00	1.9	106.9	53.8	73.1	31.7	
AN2	7.5	11.2	26/08/2011	01:00	3.8	316.9	54.4	8.6	33.6	
AN2			29/08/2011	01:00						Technical error with noise meter
AN2	8.2	11.6	30/08/2011	01:00	1.2	228.8	59.6	86.5	30.9	
AN2			31/08/2011	01:00						Technical error with noise meter
* Wind speeds in excess of 5 m/s negatively impact noise readings (as per EPA Guidance Note on Noise Measurement).										

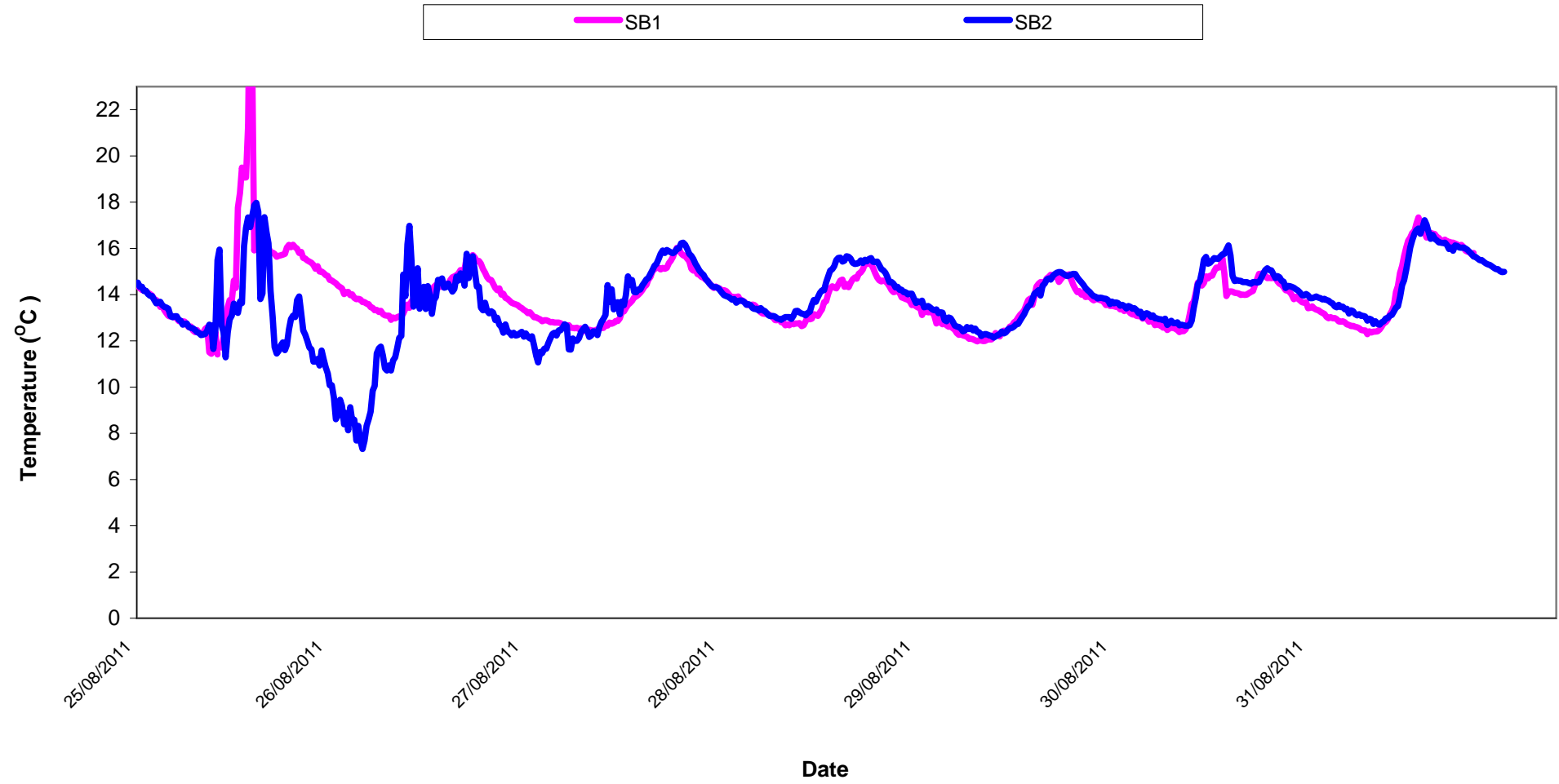
Total Suspended Solids Week Ending 31/08/2011



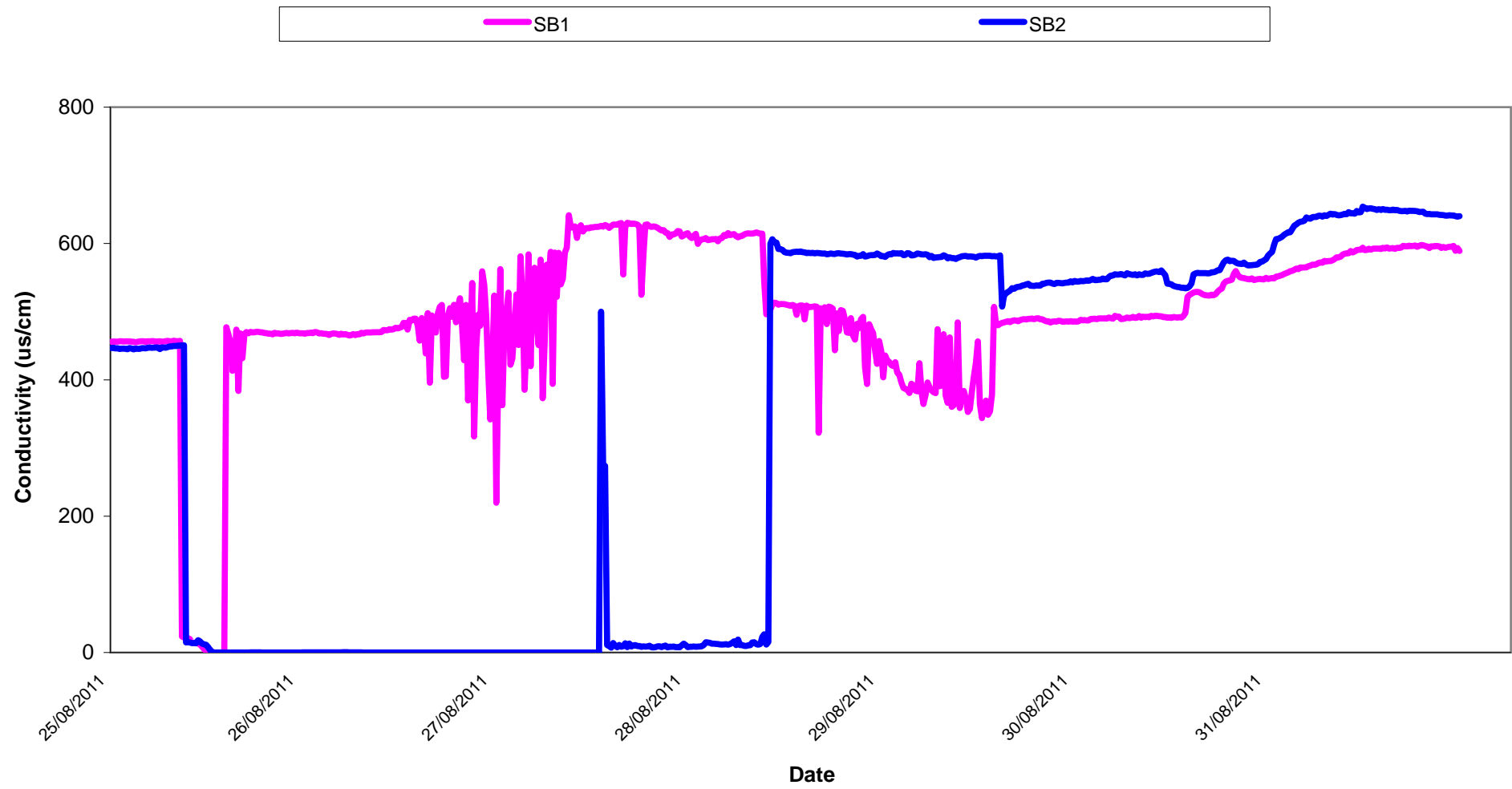
Surface Water Discharge
Weir Flow for Week Ending 31/08/2011



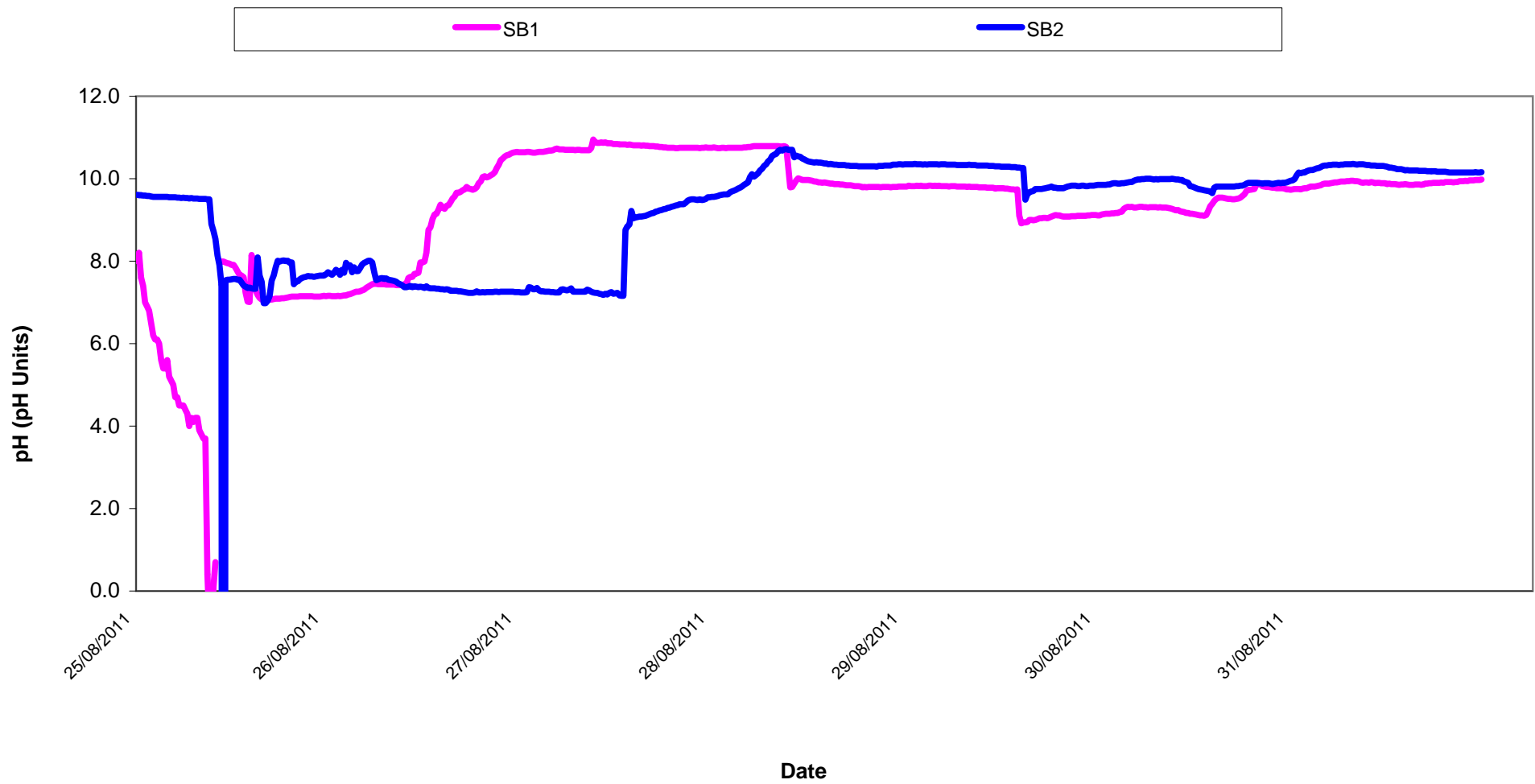
Temperature - Surface Waters Discharge
Week Ending 31/08/2011



Conductivity - Surface Waters Discharge

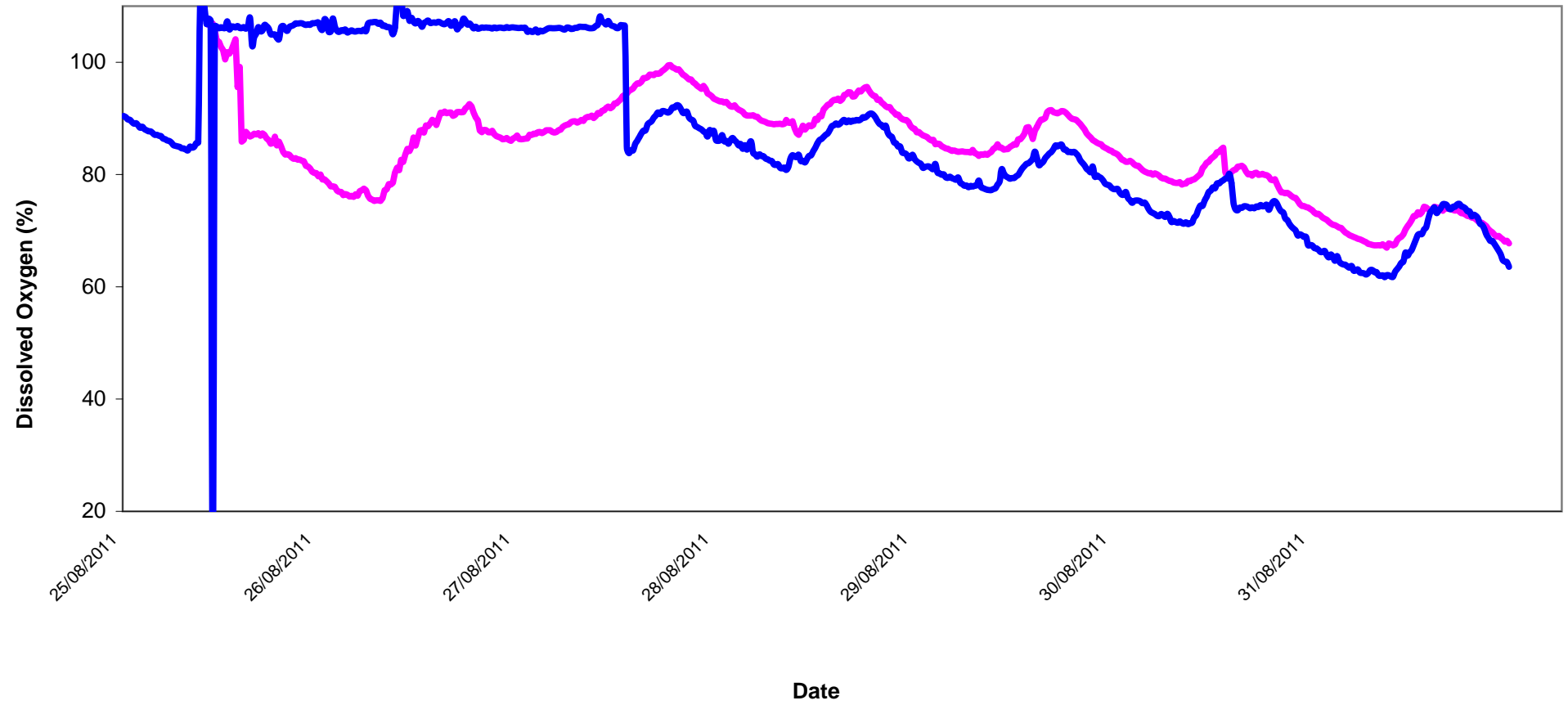


**pH - Surface Waters Discharge
Week Ending 31/08/2011**



Dissolved Oxygen - Surface Waters Discharge Week Ending 31/08/2011

SB1 SB2



Appendix 1

Appendix 1: Surface Water Monitoring Record Sheet- Onsite Monitoring

Location	Date	Temp	DO	Cond.	Turbidity	pH	TDS
		C	% Sat	µS/cm	NTU	pH Units	
DL2	25/08/2011	13.4	78.5	156	3.2	6.3	91
DL2	26/08/2011	14.2	83.0	159	1.9	4.6	90
DL2	29/08/2011	12.9	82.8	147	3.5	4.6	86
DL2	30/08/2011	15.2	83.5	161	5.7	5.0	88
DL2	31/08/2011	13.0	76.3	164	3.8	5.5	96
	Grey shaded areas denote parameters that cannot or were not analysed on-site.						
	= Indicative Only						
< LOD	= Below Limit of Detection		> LOD	= Above Limit of Detection			