

1 Monitoring Data

1.1 Monitoring Equipment

Noise	Two noise monitoring locations are currently being used – AN2 and Noise Sensitive Receptor (NSR). The sound meter records in the 1/3 octave band.
Weather Station	The data used for this reporting period was taken from the Terminal Site meteorological station.
TSS	There are TSS meters on the each of discharges on the Siltbuster.
Sondes	The results are displayed graphically.
Discharge pipe flow	The results are displayed graphically.

1.2 Rainfall Data

Date	Rainfall mm
20/10/11	10.0
21/10/11	11.6
22/10/11	11.6
23/10/11	28.6
24/10/11	4.2
25/10/11	1.2
26/10/11	5.4
Total	72.6

1.3 Summary

Environment	Comments
Weather	There was a total of 72.6mm of rainfall during the reporting period, with a temperature range of 1.0°C to 12.7°C.
Noise	There were no noise level exceedences during the reporting period.
Surface Water	There were no surface water exceedences during the reporting period.

2 Environmental Exceedences / Incidents /

There were no environmental exceedences identified during the reporting period.

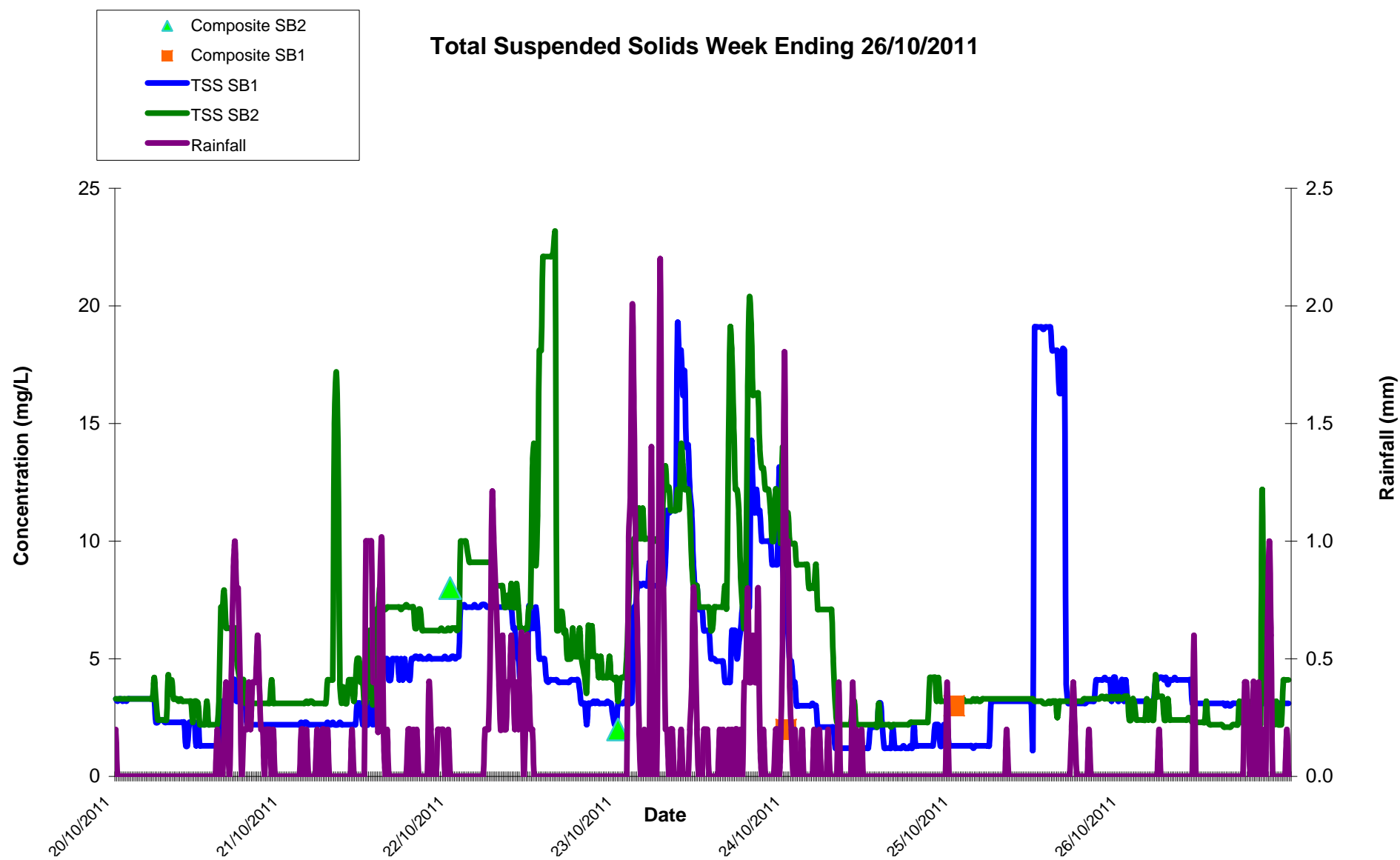
Day Time Noise Monitoring Record Sheet										
Determinant Results										
Location	Air Temp. (Min)	Air Temp. (Max)	Start Date and Time	Duration	Wind		Results dB			*Comments
					Speed (m/s)*	Direction (Degrees)	L _{Aeq}	L _{Amax}	L _{Amin}	
Action Limit							60.0			
Target Limit							65.0			
AN2	4.8	11.0	20/10/2011 11:00		7.9	213.3	55.1	68.4	38.5	
AN2	9.2	12.6	21/10/2011 16:00		12.9	207.2	55.8	86.5	39.6	
AN2	6.4	12.7	24/10/2011 16:00		1.4	293.7	52.8	73.6	36.6	
AN2	1.2	7.6	25/10/2011 11:00		1.0	117.8	53.7	70.2	37.0	
AN2	1.0	10.2	26/10/2011 16:00		8.7	148.7	59.3	91.4	34.7	
NSR	4.8	11.0	20/10/2011 14:00		11.0	209.0	59.3	72.7	39.5	
NSR	9.2	12.6	21/10/2011 00:00							Technical error with noise meter
NSR	6.4	12.7	24/10/2011 16:00							Technical error with noise meter
NSR	1.2	7.6	25/10/2011 11:00		1.0	117.8	54.2	74.9	32.8	
NSR	1.0	10.2	26/10/2011 16:00		8.7	148.7	60.9	76.8	38.7	

* Wind speeds in excess of 5 m/s negatively impact noise readings (as per EPA Guidance Note on Noise Measurement).

** Allowance of +/- 1.5dB accuracy of sound level meter (ref: IEC 61672 (2002-2005))

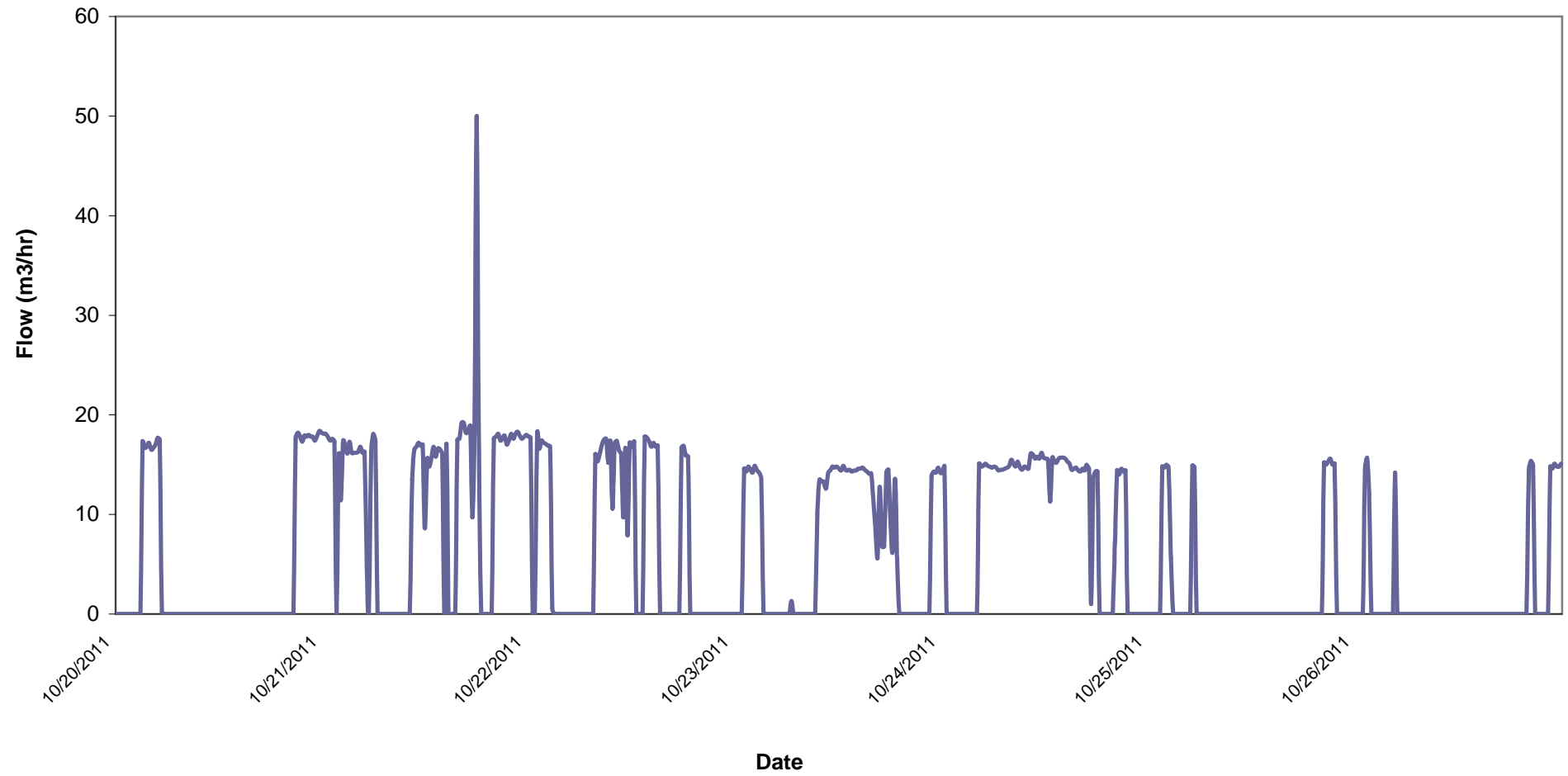
The results show the maximum Laeq(1hr) for each day of monitoring

NSR: Nearest Sensitive Receptor

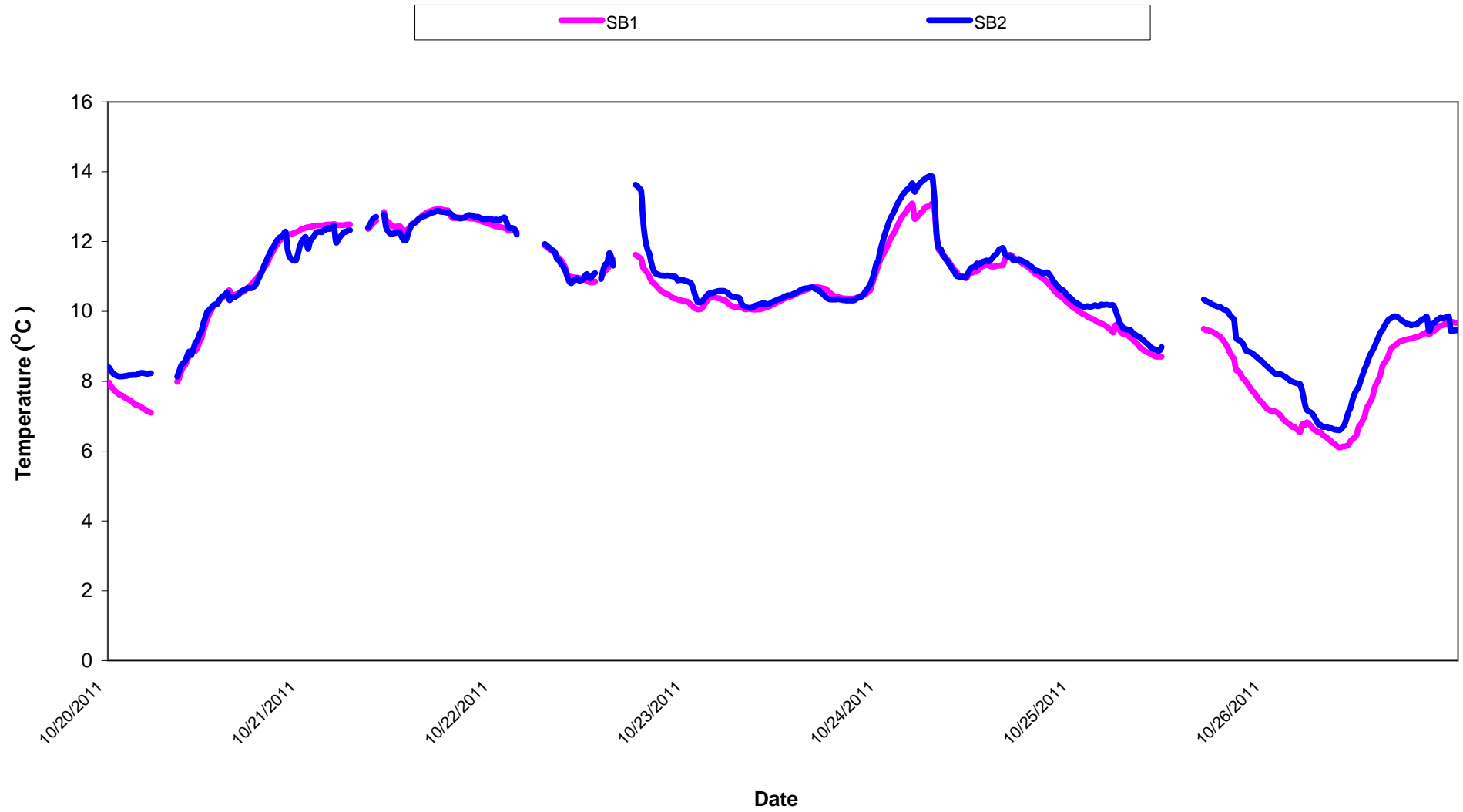


Flow - Surface Waters Discharge
Week ending 26/10/2011

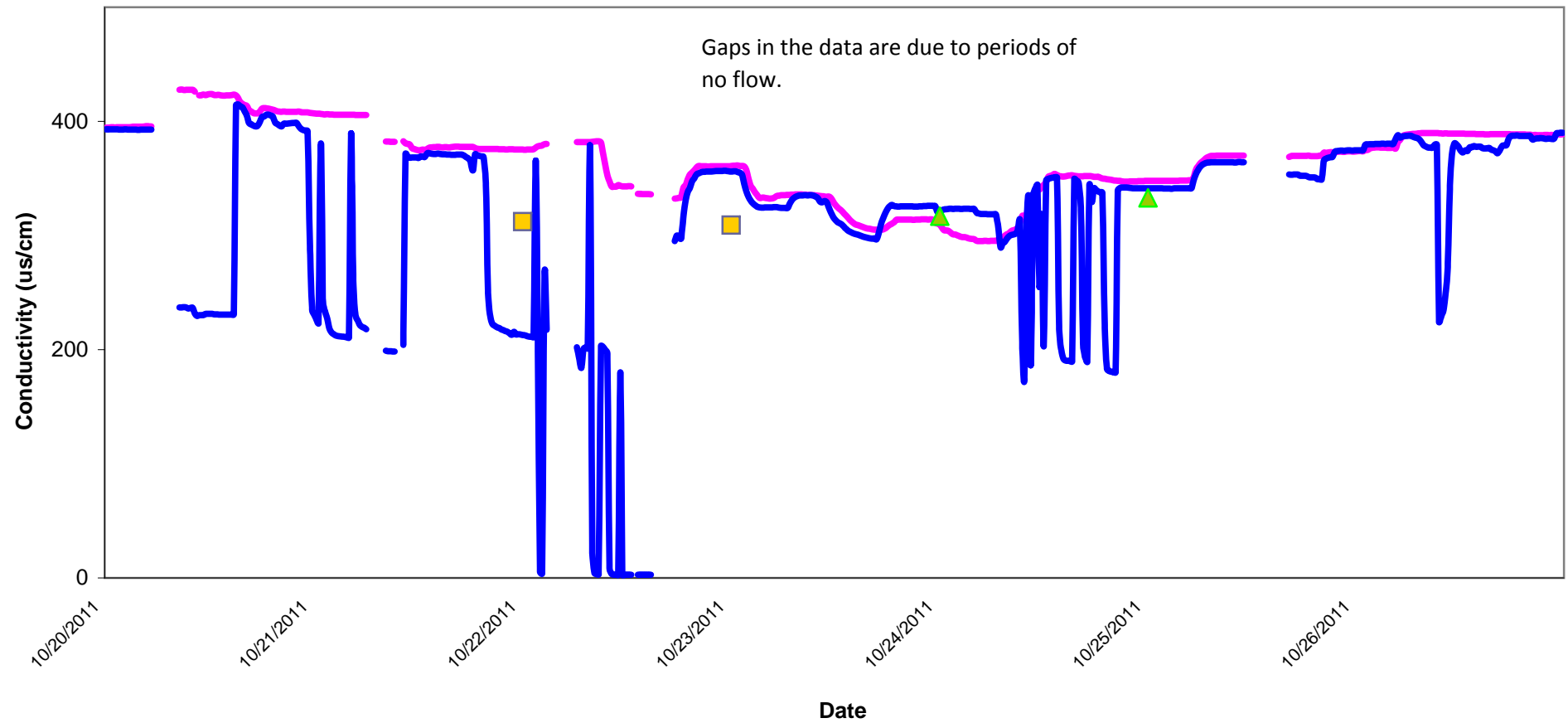
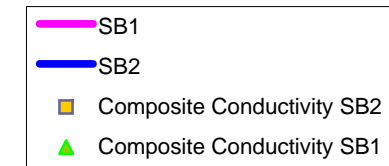
Discharge



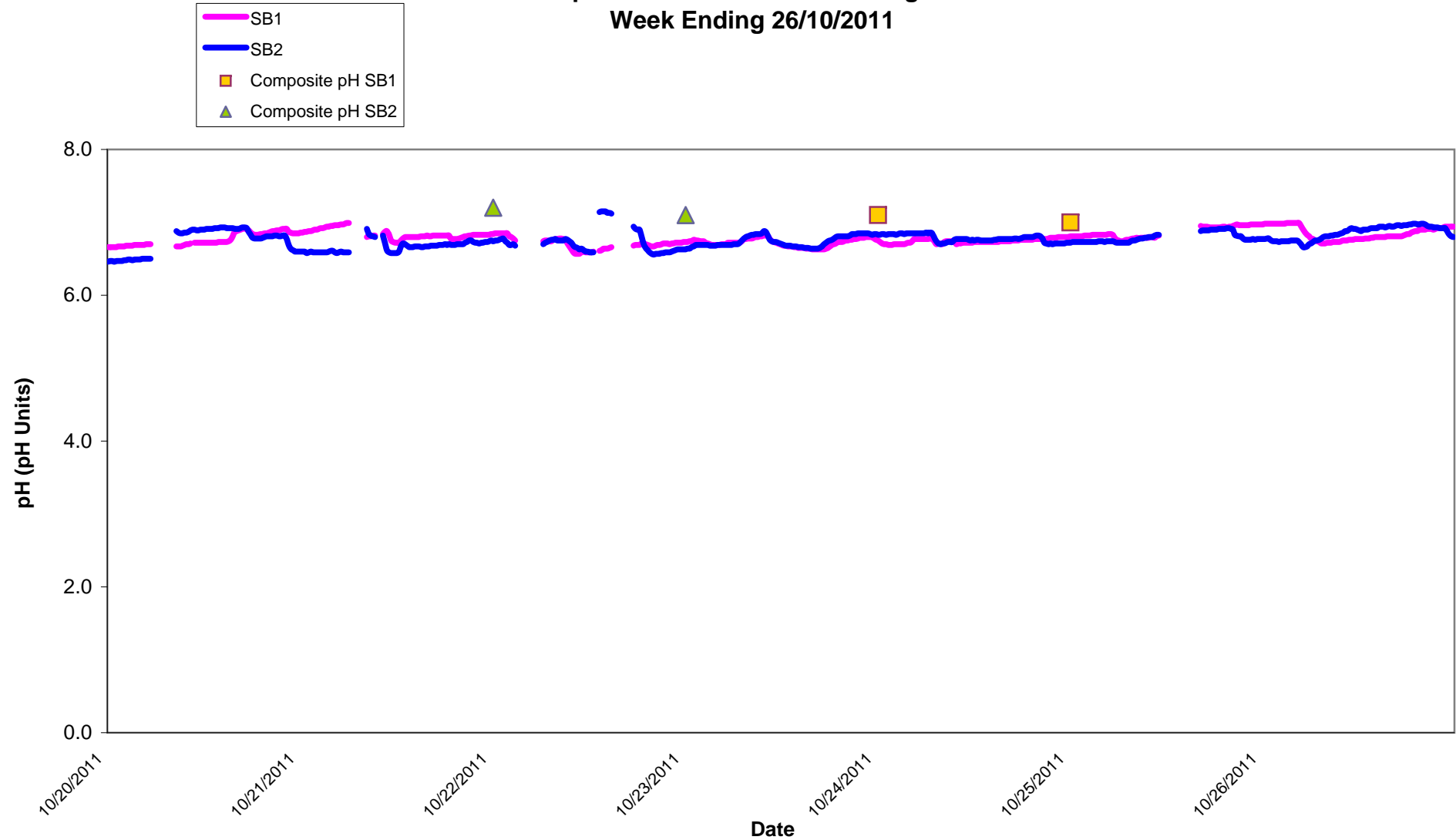
Temperature - Surface Waters Discharge
Week ending 26/10/2011



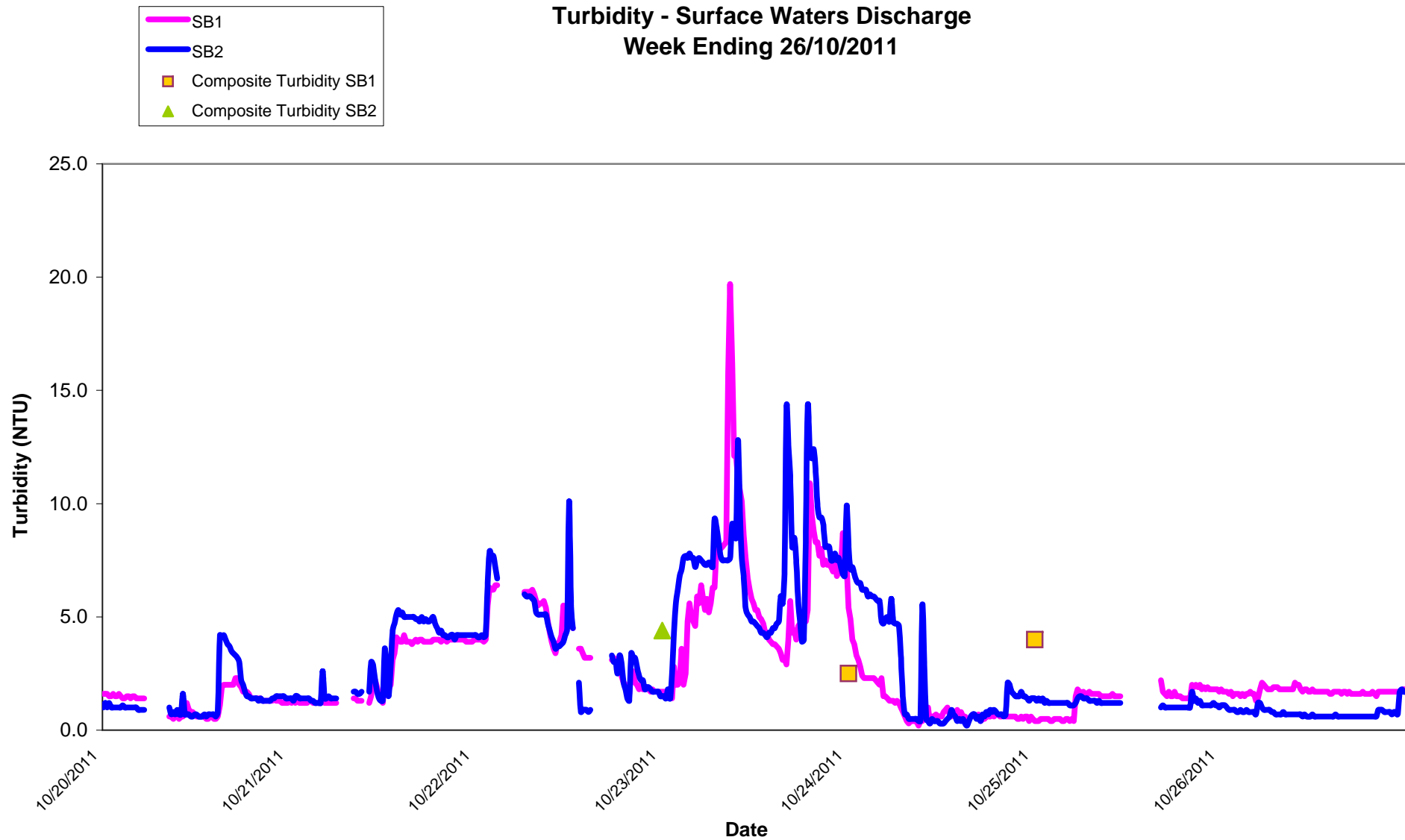
Conductivity - Surface Waters Discharge Week ending 26/10/2011



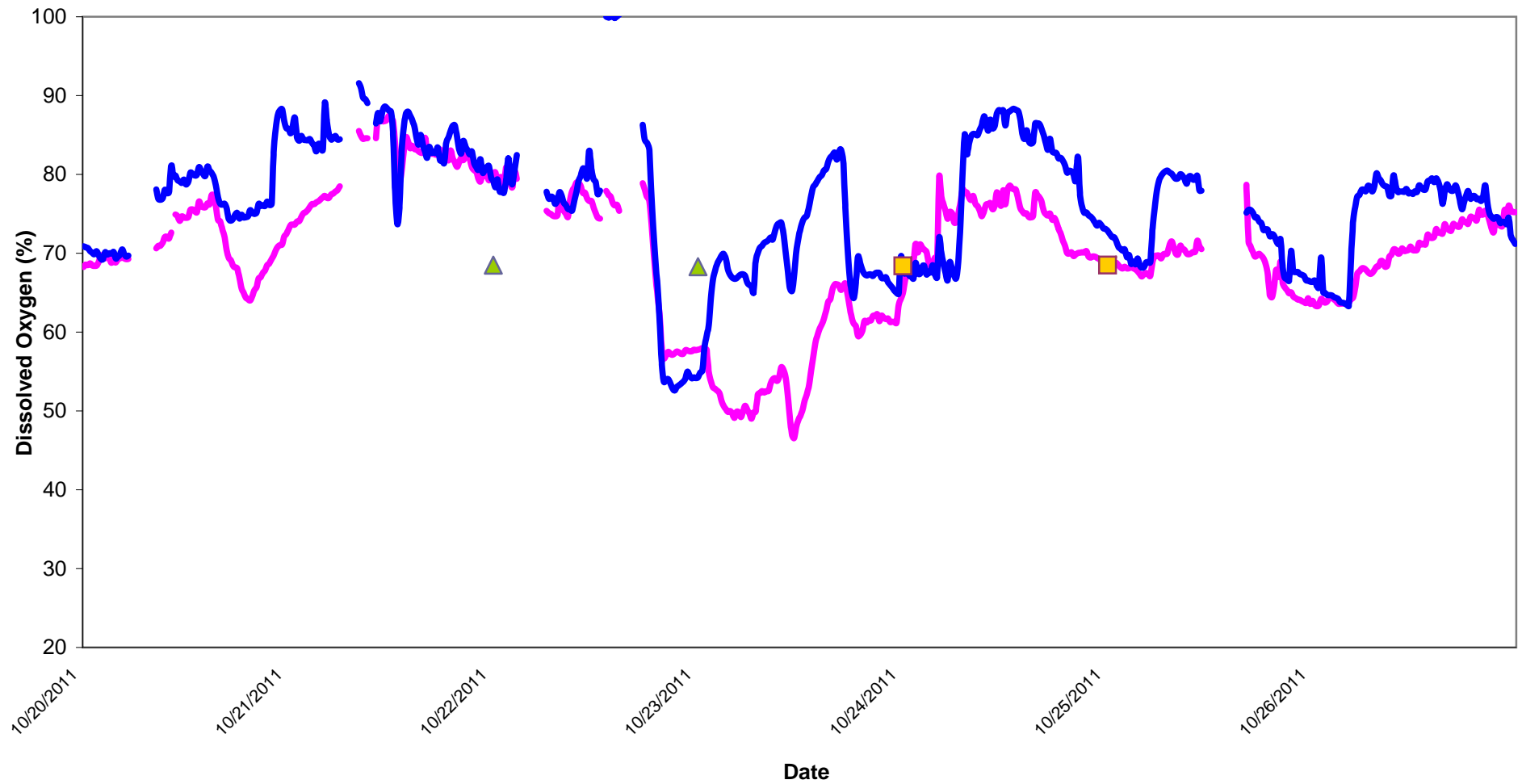
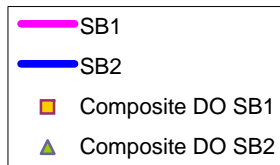
pH - Surface Waters Discharge
Week Ending 26/10/2011



Turbidity - Surface Waters Discharge Week Ending 26/10/2011



Dissolved Oxygen - Surface Waters Discharge Week Ending 26/10/2011



Appendix 1

Appendix 1: Surface Water Monitoring Record Sheet- Onsite Monitoring							
Location	Date	Temp	DO	Cond.	Turbidity	pH	TDS
		C	% Sat	µS/cm	NTU	pH Units	ppm
DL2	20/10/2011	9.3	53.2	233	7.1	6.1	143
DL2	21/10/2011	12.5	60.2	164	18.2	6.5	96
DL2	24/10/2011	12.2	73.1	247	7.2	6.1	169
DL2	25/10/2011	9.8	40.8	214	5.1	6.1	115
DL2	26/10/2011	9.9	60.3	205	6.8	6.3	121
	Grey shaded areas denote parameters that cannot or were not analysed on-site.						
	= Indicative Only						
< LOD	= Below Limit of Detection			> LOD	= Above Limit of Detection		