

1 Monitoring Data

1.1 Monitoring Equipment

Noise	Three noise monitoring locations are currently being used – AN2, NSR1 and NSR3. The sound meter records in the 1/3 octave band.
Weather Station	The data used for this reporting period was taken from the Aughoose Site meteorological station.
TSS	There are TSS meters on the each of discharges on the Siltbuster.
Sondes	The results are displayed graphically.
Discharge pipe flow	The results are displayed graphically.

1.2 Rainfall Data

Date	Rainfall mm
15/12/11	8.4
16/12/11	7.0
17/12/11	4.8
18/12/11	2.4
19/12/11	17.0
20/12/11	12.8
Total	52.4

1.3 Summary

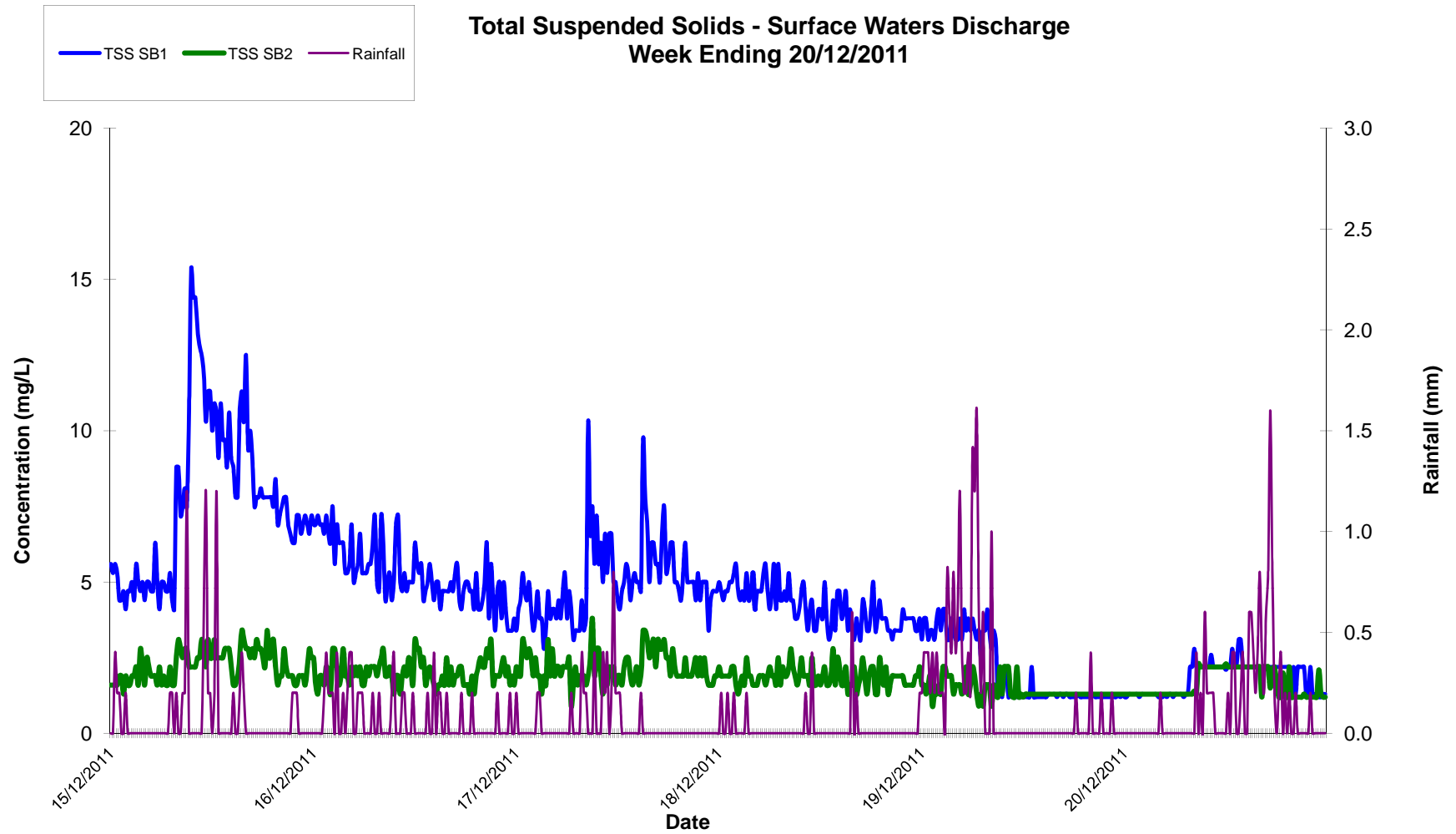
Environment	Comments
Weather	There was a total of 52.4mm of rainfall during the reporting period, with a temperature range of 0.4°C to 11.2°C.
Noise	There was no identified noise exceedance at the nearest noise sensitive receptor during the reporting period. However, there was an elevation at AN2 on the 15 th of December. The elevation was investigated; construction site activities at this time did not differ from operations usual/ standard activities undertaken over that time period. The elevation may have resulted from a intense rainfall event or traffic movements. SEPIL are continuing to monitor site activities to limit excess noise source generation. Loss of data between 16 th and 19 th December was as a result of operator error when downloading data. The data loss was not caused by lack of consistent power supply.
Surface Water	There was no identified surface water exceedance during the reporting period from the surface water treatment.

2 Environmental Exceedances / Incidents /

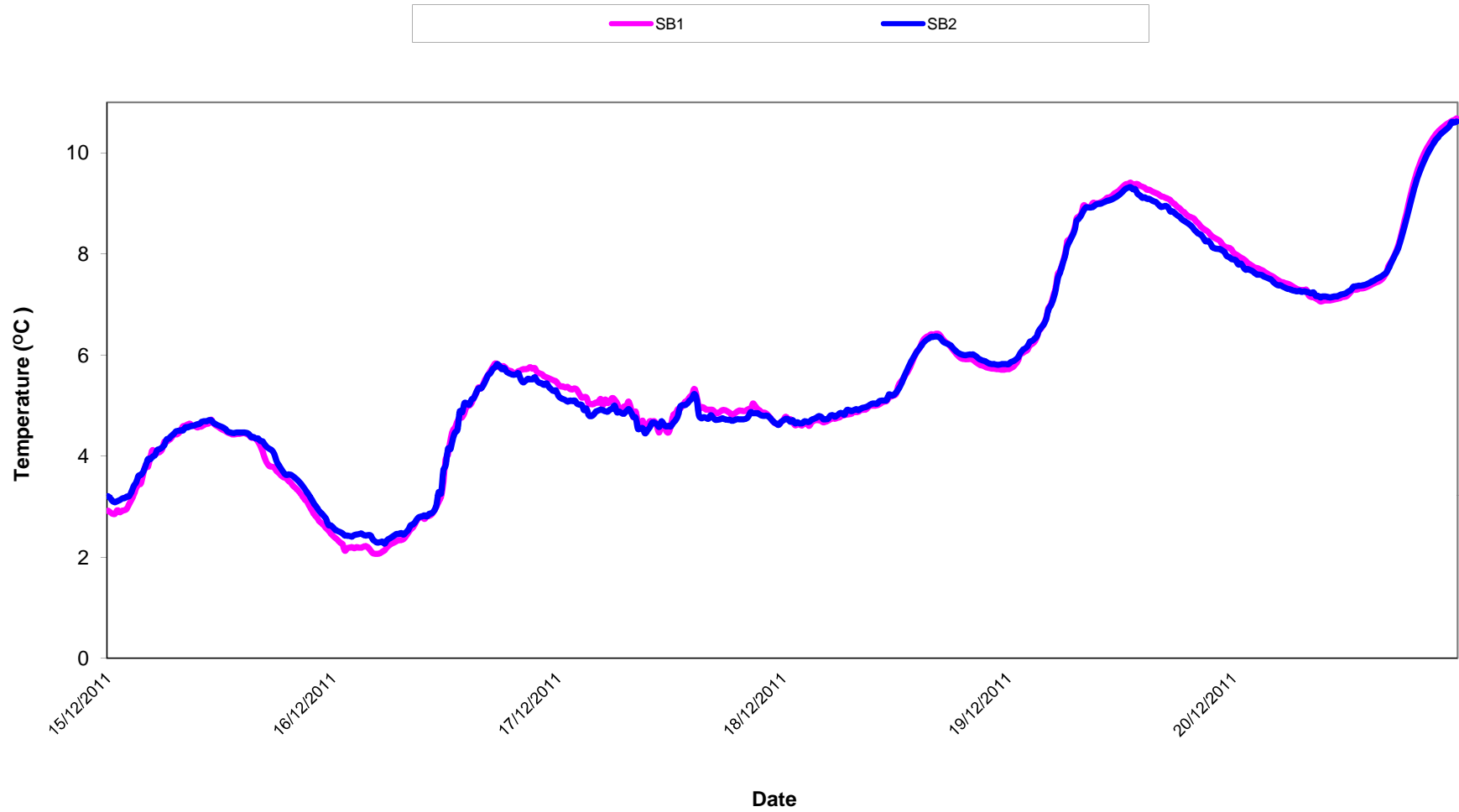
There were no environmental exceedences identified during the reporting period.

Determinant Results										
Location	Air Temp. (Min)	Air Temp. (Max)	Start Date and Time	Duration	Wind		Results dB			*Comments
					Speed (m/s)*	Direction (Degrees)	L _{Aeq}	L _{Amax}	L _{Amin}	
Action Limit							60.0			
Target Limit							65.0			
AN2	0.4	6.7	15/12/2011:09:00	1:00	2.7	226.1	61.5	80	45.3	Elevated noise level may have been due to 0.6mm of rainfall in a 15min period.
			15/12/2011:10:00	1:00			65.5	86.3	43.4	
			15/12/2011:11:00	1:00			61.8	77.6	47.6	
			15/12/2011:12:00	1:00			60.8	75.9	42.4	
			15/12/2011:13:00	1:00			61.5	78.1	44.2	
			15/12/2011:14:00	1:00			61.2	76.8	42.5	
			15/12/2011:12:00	1:00			50.3	72.7	32.7	
NSR1			15/12/2011:08:00	1:00			54.2	39.5	64	
NSR3			16/12/2011:14:00	1:00	4.0	284.1	56.6	78.4	36.6	
NSR3	0.7	7.2	16/12/2011:14:00	1:00			59.3	38.6	81.9	
			16/12/2011:15:00	1:00			59.3	38.6	81.9	
NSR1	1.9	7.6	17/12/2011:10:00	1:00	4.2	294.1	52.4	73.1	29.5	
NSR3			17/12/2011:12:00	1:00			63.7	27.7	86.7	
NSR1	6.2	10.5	19/12/2011:14:00	1:00	4.0	251.6	48.2	70.9	32.3	
NSR3			19/12/2011:08:00	1:00			46.4	33.5	69.6	
AN2	6.7	11.2	20/12/2011 15:00	1:00	3.1	230.9	58.9	75.7	41.5	
NSR1			20/12/2011:15:00	1:00			50.7	72.5	39.7	
NSR3			20/12/2011:16:00	1:00			47.8	41.8	65.2	
* Wind speeds in excess of 5 m/s negatively impact noise readings (as per EPA Guidance Note on Noise Measurement).										
**Allowance of +/- 1.5dB accuracy of sound level meter (ref: IEC 61672 (2002-2005))										
The results show LAeq(1hr) for maximum daily values or values over 60dB for each day of monitoring										

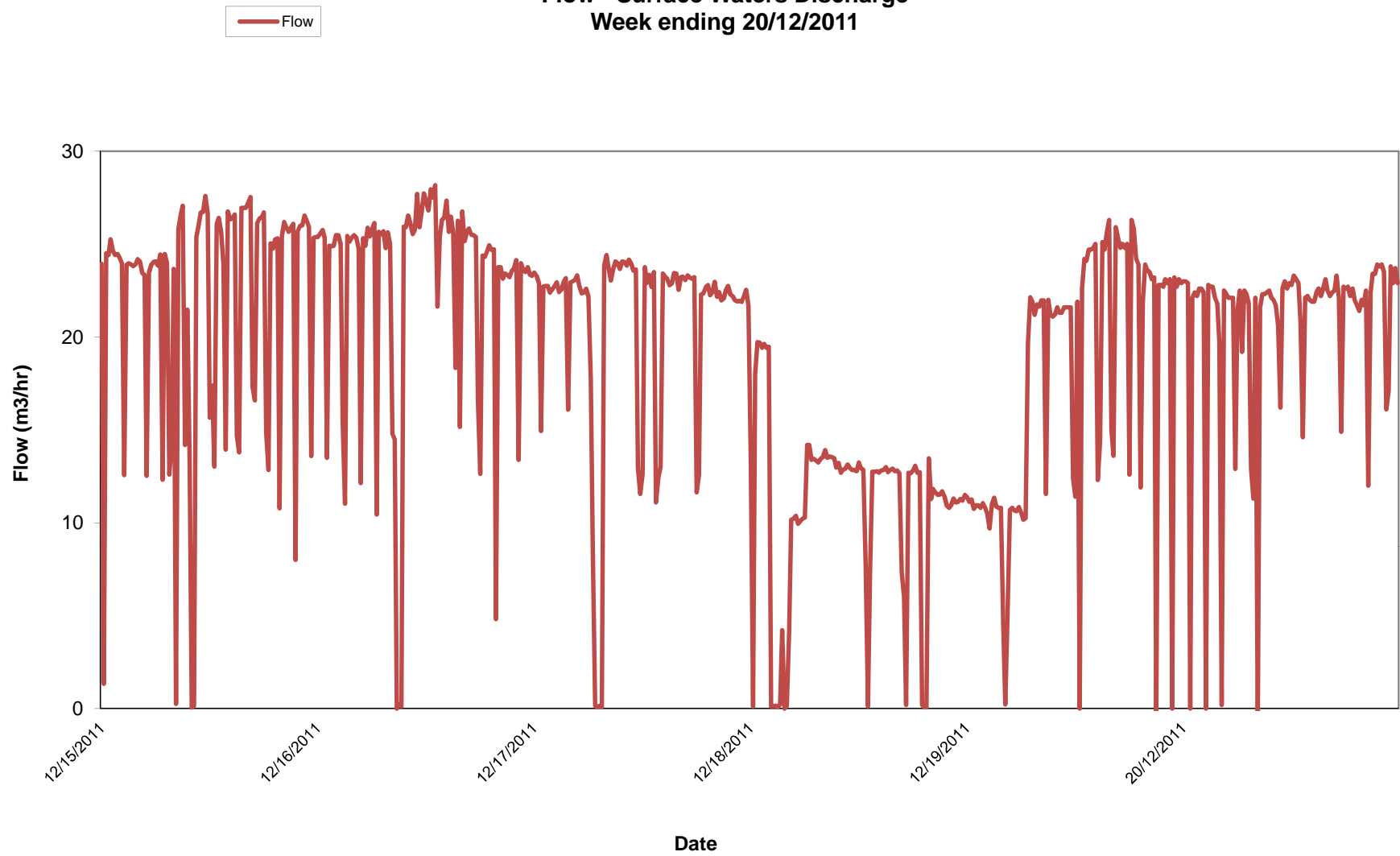
**Total Suspended Solids - Surface Waters Discharge
Week Ending 20/12/2011**



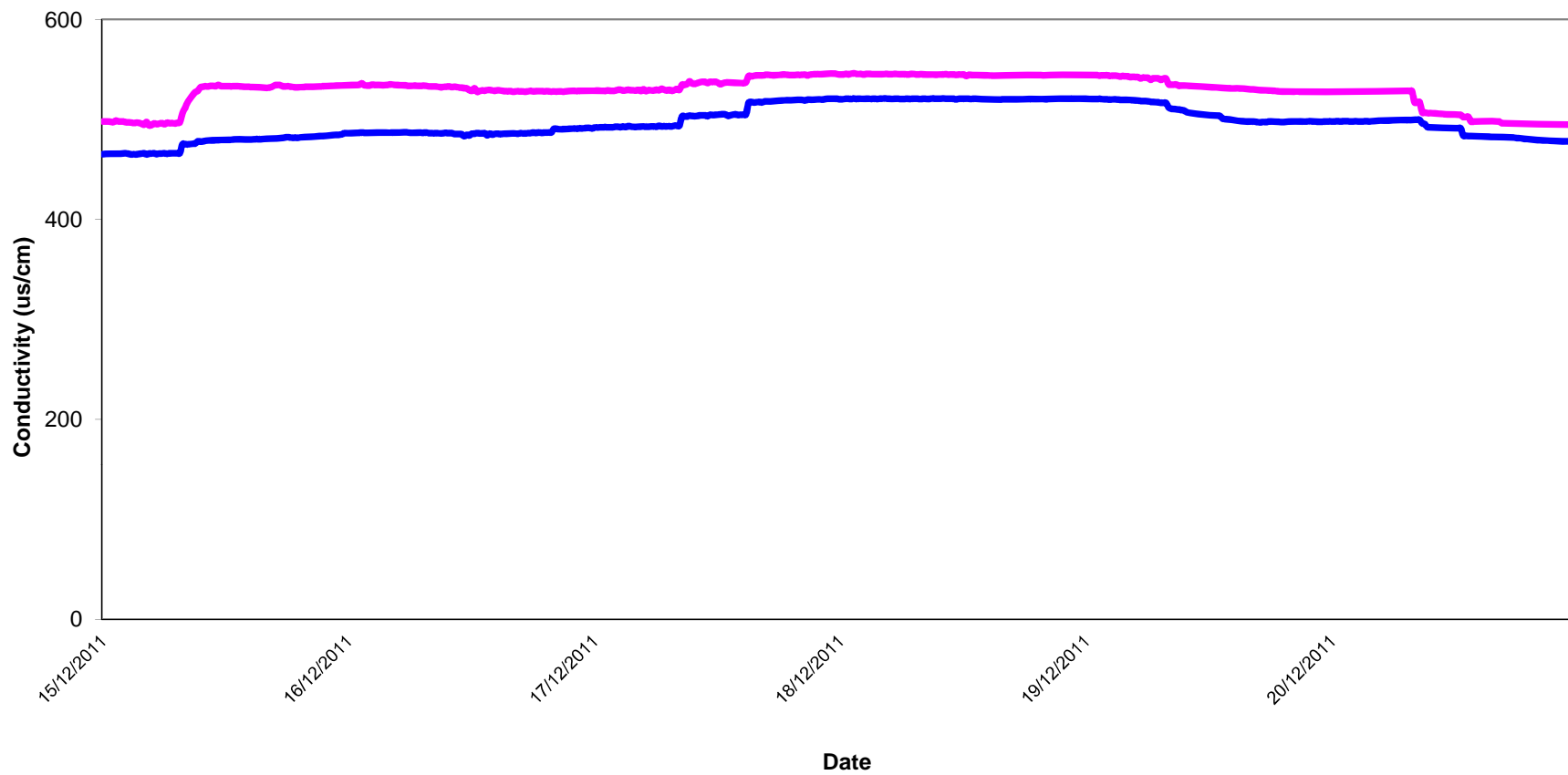
Temperature - Surface Waters Discharge
Week ending 20/12/2011



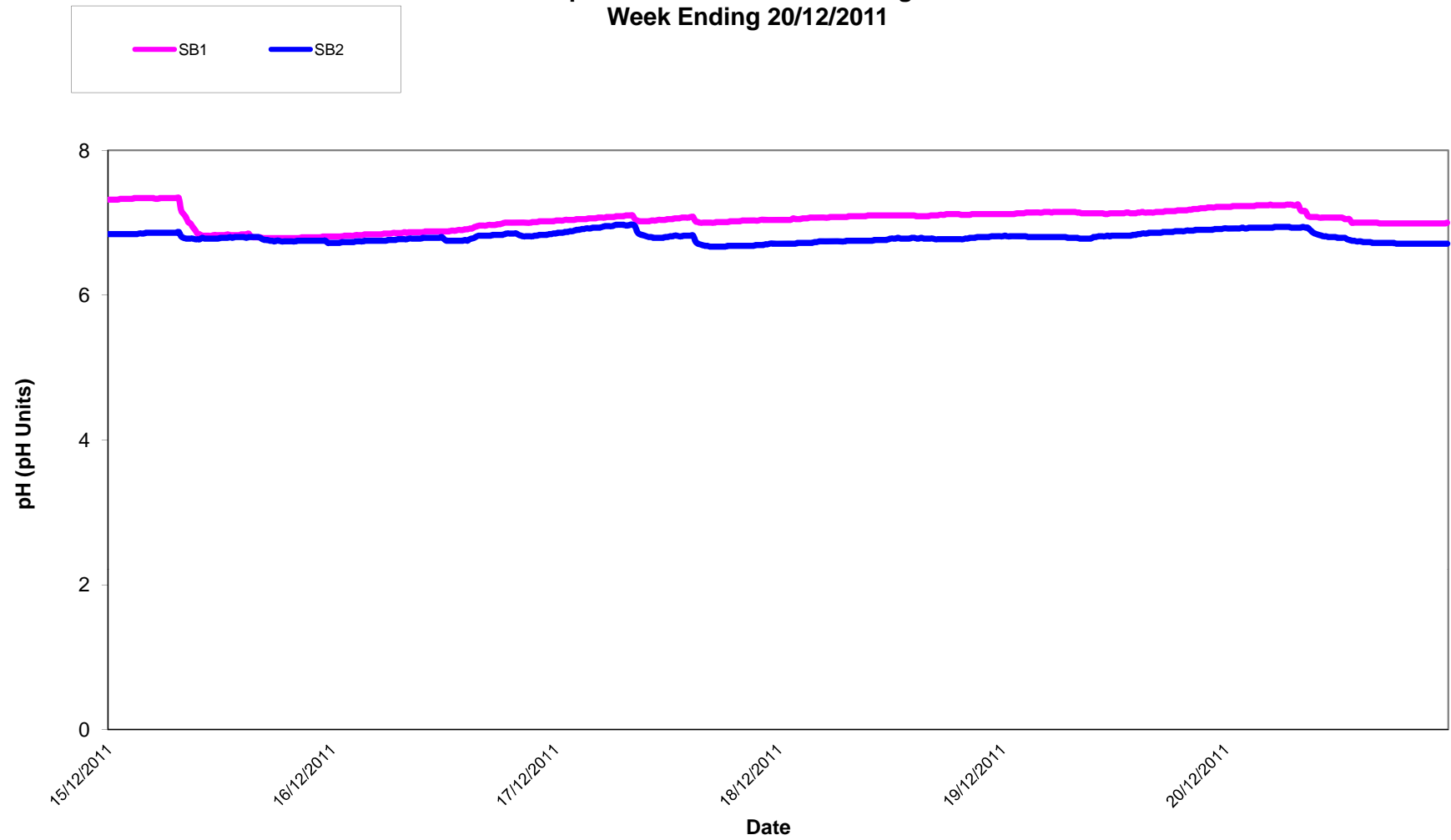
Flow - Surface Waters Discharge
Week ending 20/12/2011



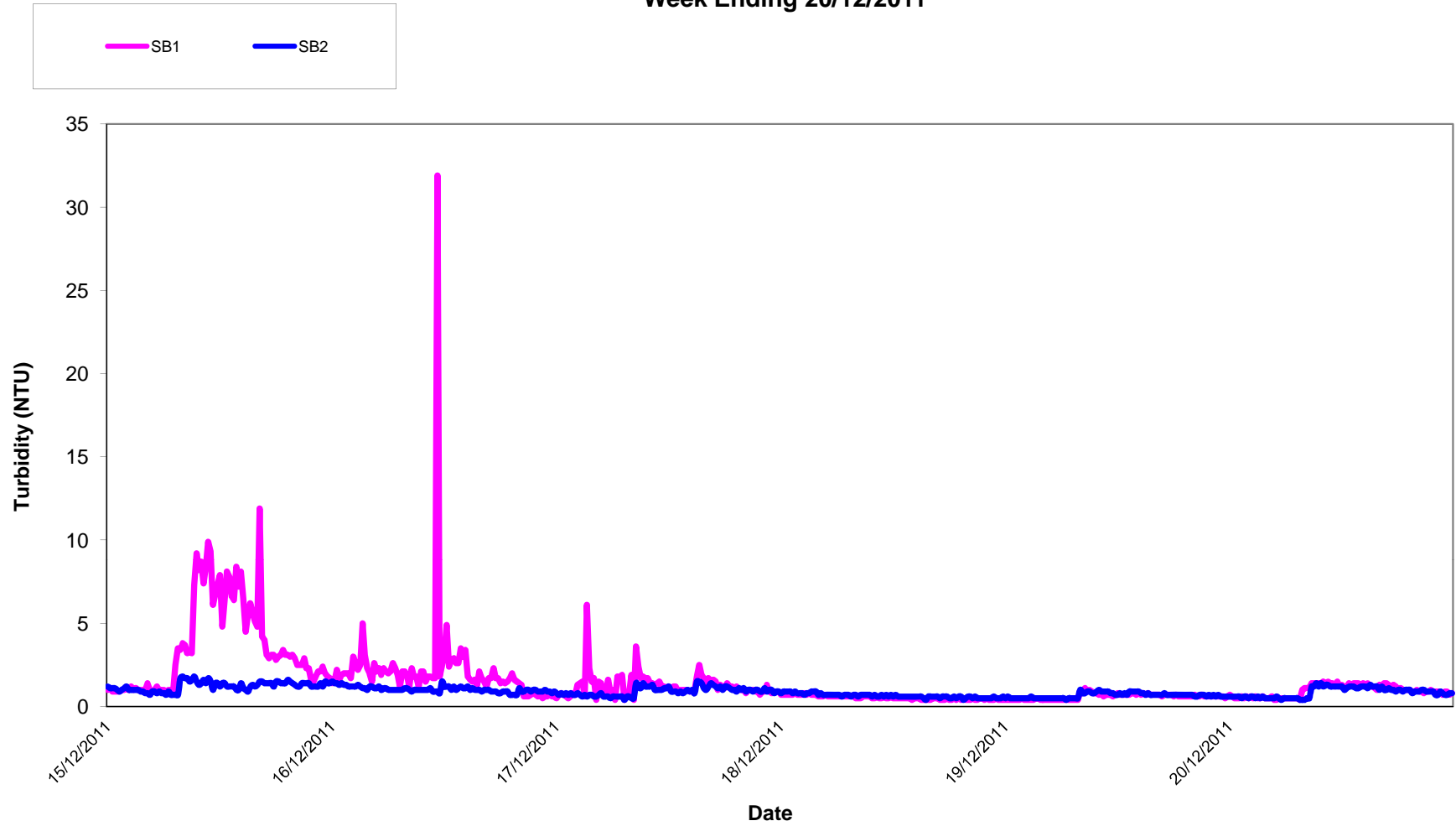
Conductivity - Surface Waters Discharge
Week ending 20/12/2011



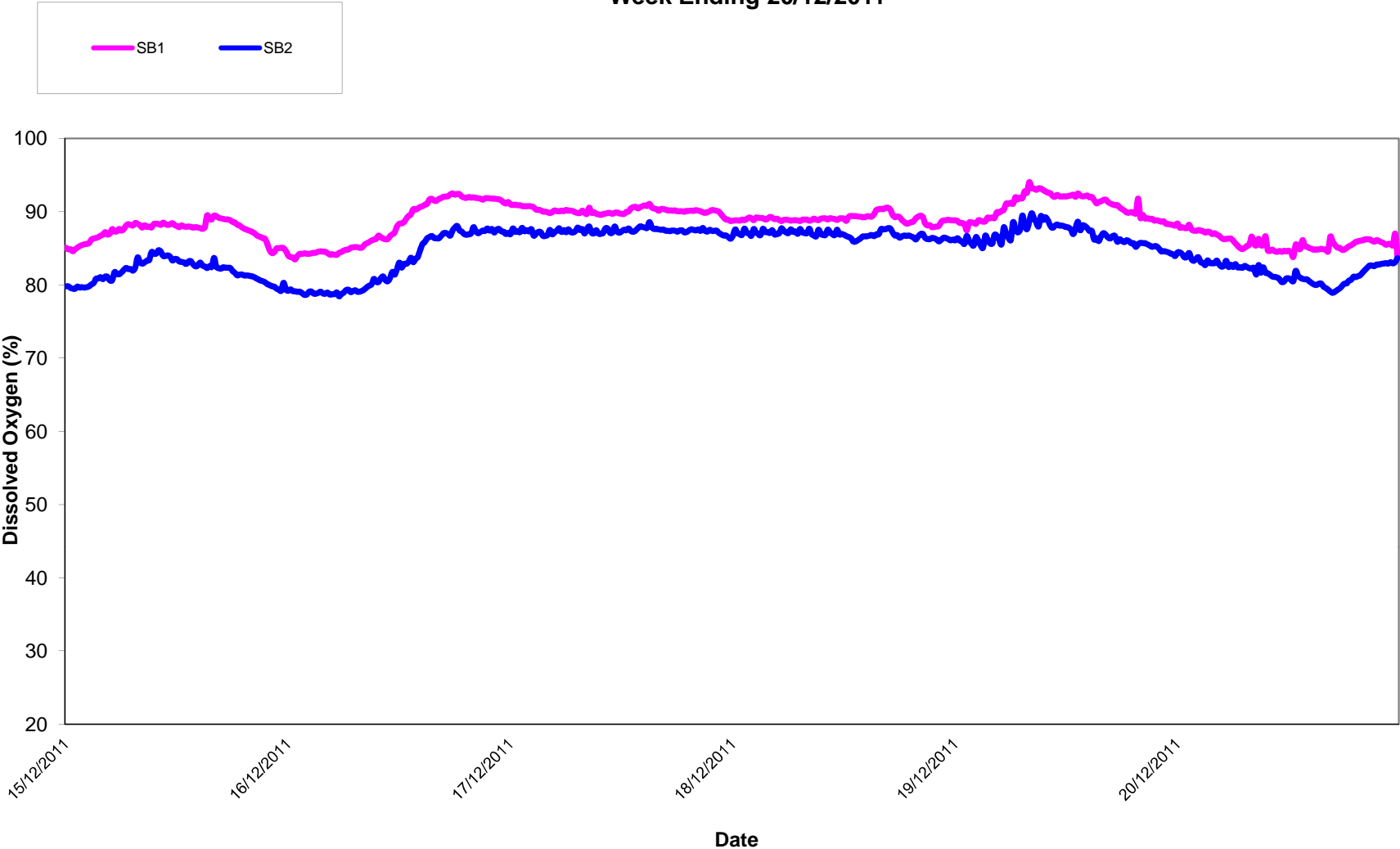
**pH - Surface Waters Discharge
Week Ending 20/12/2011**



**Turbidity - Surface Waters Discharge
Week Ending 20/12/2011**



Dissolved Oxygen - Surface Waters Discharge
Week Ending 20/12/2011



Appendix 1

Appendix 1: Surface Water Monitoring Record Sheet- Onsite Monitoring						
Location	Date	Temp	DO	Cond.	Turbidity	pH
		C	% Sat	µS/cm	NTU	pH Units
DL2	15/12/2011	5.5	99.2	521.0	9.0	6.3
DL2	16/12/2011	6.5	86.6	419.0	11.8	6.3
DL2	19/12/2011	8.0	88.5	284.0	13.5	6.4
DL2	20/12/2011	8.0	89.5	408.0	27.7	6.3
	Grey shaded areas denote parameters that cannot or were not analysed on-site (results given are from CLS Labs).					
	= Indicative Only					
< LOD	= Below Limit of Detection		> LOD	= Above Limit of Detection		