

1 Monitoring Data

1.1 Monitoring Equipment

Noise	Four noise monitoring locations are currently being used – AN1, AN2, NSR1 and NSR3. The sound meter records in the 1/3 octave band.
Weather Station	The data used for this reporting period was taken from the Aughoose Site meteorological station.
TSS	There are TSS meters on the each of discharges on the Siltbuster.
Sondes	The results are displayed graphically.
Discharge pipe flow	The results are displayed graphically.

1.2 Rainfall Data

Date	Rainfall mm
12/01/2012	1.2
13/01/2012	0.4
14/01/2012	0.0
15/01/2012	0.0
16/01/2012	0.0
17/01/2012	3.2
18/01/2012	1.2
Total	6.0

1.3 Summary

Environment	Comments
Weather	There was a total of 6mm of rainfall during the reporting period, with a temperature range of 2.1°C to 11.7 °C.
Noise	There were occasions of elevated noise on the 12 th January at AN1 and AN2 due to piling activity onsite. On the 18 th Jan there were instances of elevated noise levels at AN2 which is thought to be due to road traffic. The noise meter is in close proximity to the roadside. During the reporting period fence screening was installed on the fence located near to the monitoring point which gave rise to elevated noise readings at AN2.
Surface Water	There were no identified surface water exceedences during the reporting period from the siltbuster.

2 Environmental Exceedances / Incidents /

There were occasions of elevated noise level exceedences identified during the reporting period which are outlined in the attached notification report.

Environmental Notification

Notification No.

005

Elevated noise levels at AN1 and AN2 noise monitoring locations.

Date: January 12th and 18th 2012 **Time**

Comments

Noise levels exceeded the limit of 65dB(A) at the following times:

Location	Date	Time	dB(A) $L_{Aeq(1hr)}$
AN1	12/01/2012	11am	68.9
		12pm	65.5
		1pm	66.7
		2pm	65.5
		3pm	68.3
	18/01/2012	2pm	66.7
AN2	12/01/2012	8am	68.0
		9am	70.6
		10am	68.9
		11am	71.4
		12pm	66.6
		1pm	71.4
		2pm	66.0
		3pm	72.0

The elevated noise levels at AN1 and AN2 on 12th January are thought to be the result of use impact piling hammer in operation on site. The impact piling hammer ceased operation on the afternoon of the 12th. On January 12th there was a total of 159 truck movements and on January 18th there was a total of 158 truck movements, all of which pass the unoccupied house where the noise meter is located.

As a comparison, noise levels at NSR1 were as follows:

- January 12th at:
 - 10am – 51.5(A) $L_{Aeq(1hr)}$
 - 12pm – 45.5dB(A) $L_{Aeq(1hr)}$
 - 2pm – 47.4dB(A) $L_{Aeq(1hr)}$
- January 18th at:
 - 2pm – 46.7bB(A) $L_{Aeq(1hr)}$
 - 1pm – 44.9bB(A) $L_{Aeq(1hr)}$

Further Actions		
<ul style="list-style-type: none">• Truck movements will be checked against noise results on an ongoing basis.• Additional visual screen has been erected along the eastern boundary fence which will marginally reduce noise migration from the site.		
Issued to Mayo Co Co By:	Date:	Time:
SIGNED: Environmental Advisor	DATE:	

Determinant Results

Determinant Results							
				Duration	Wind	Results dB	

* Wind speeds in excess of 5 m/s negatively impact noise readings (as per EPA Guidance Note on Noise Measurement).	
** Allowance of +/- 1.5dB accuracy of sound level meter (ref: IEC 61672 (2002-2005))	
The results show Laeq(1hr) for maximum daily values or values over 60dB for each day of monitoring	
	AN1 noise monitoring location is situated along the northern edge of the Aughooose site
	AN2 noise monitoring location is situated at the unoccupied house south west of the Aughooose site
	NSR1 noise monitoring location is situated at the nearest sensitive receptor south-west of Aughooose site
	NSR3 noise monitoring location is situated in Rosspoint

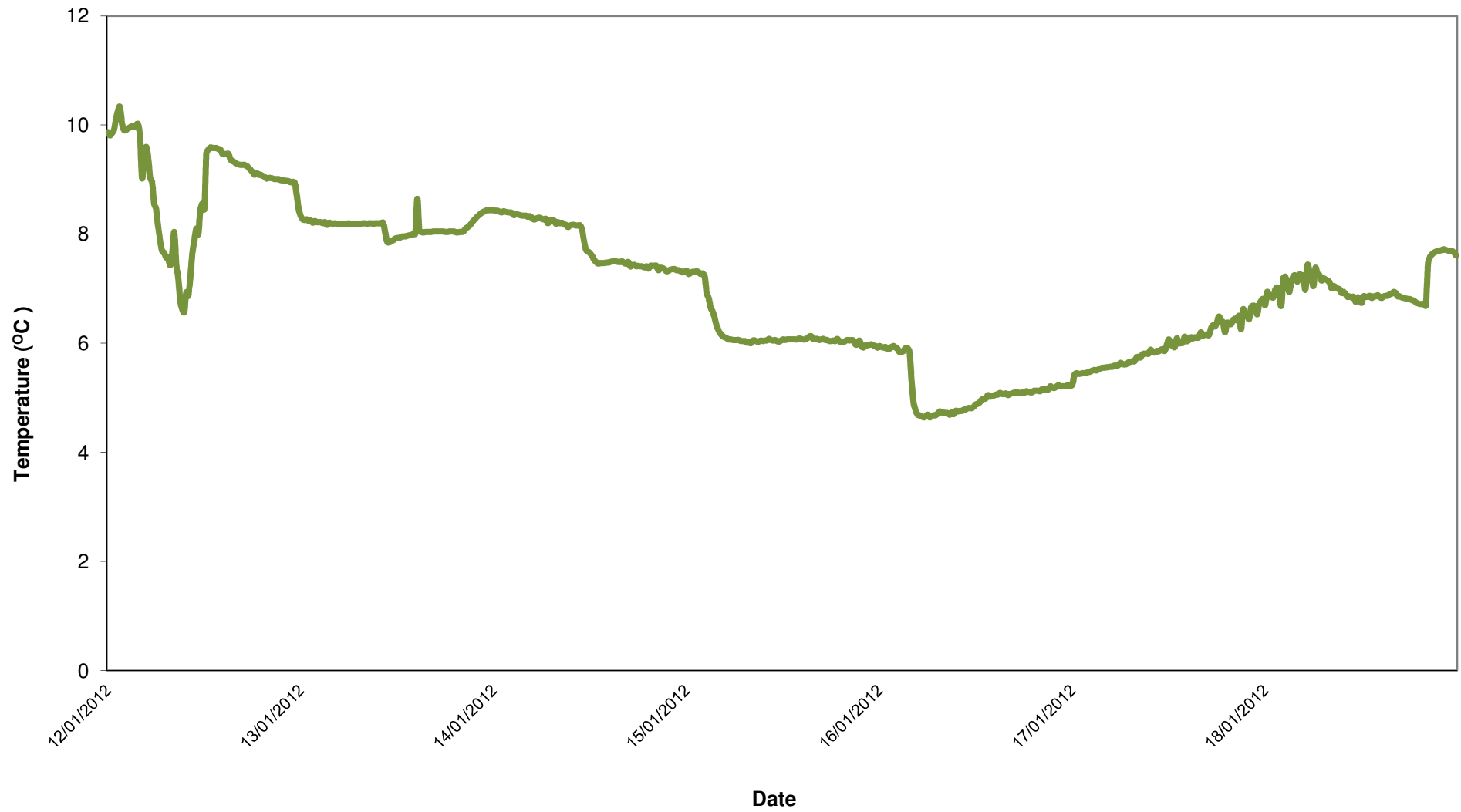
**Allowance of +/- 1.5dB accuracy of sound level meter (ref: IEC 61672 (2002-2005))

AN1 noise monitoring location is situated along the northern edge of the Aughoose site
--

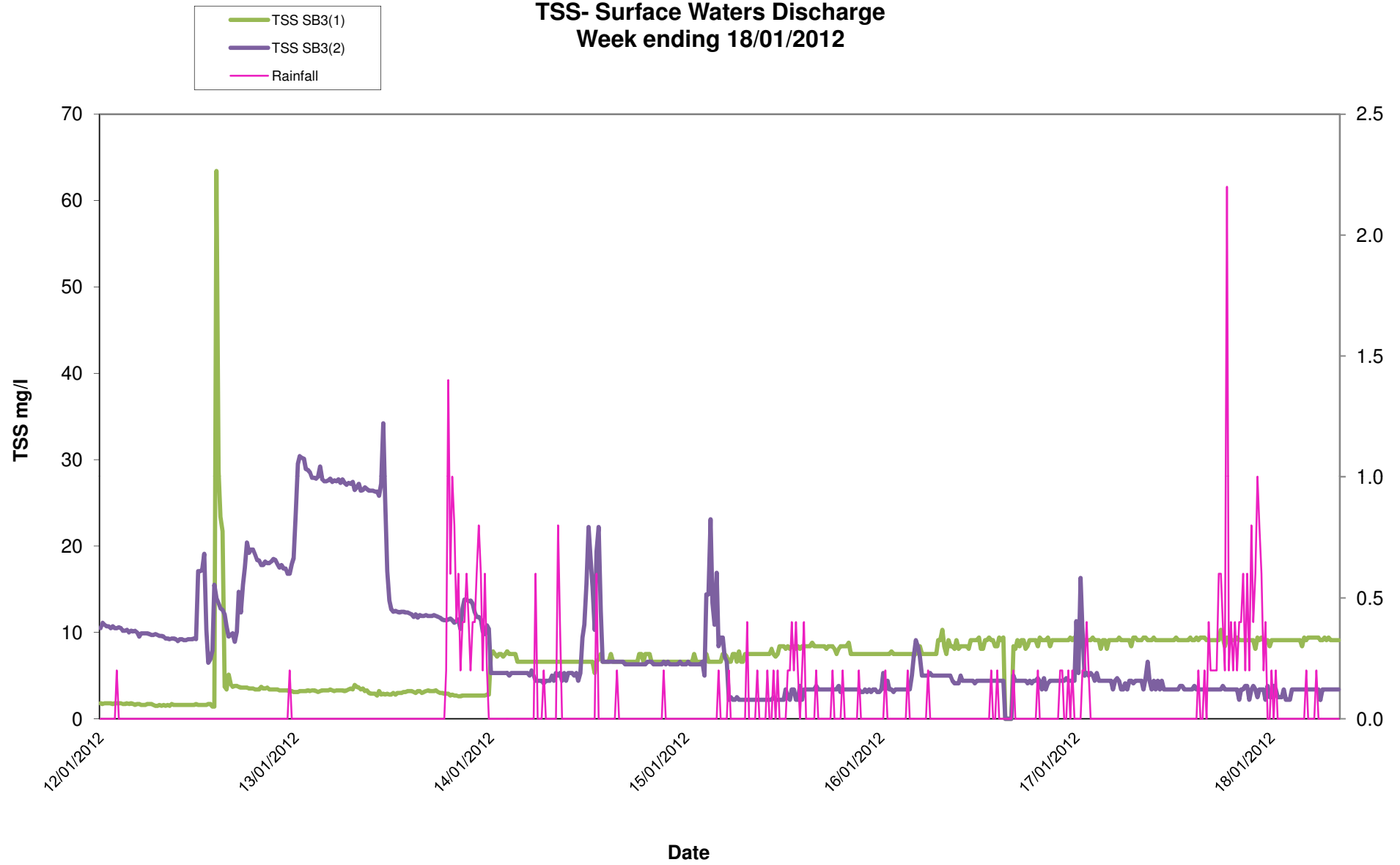
	NSR1 noise monitoring location is situated at the nearest sensitive receptor south-west of Aughoos
--	--

[illegible]

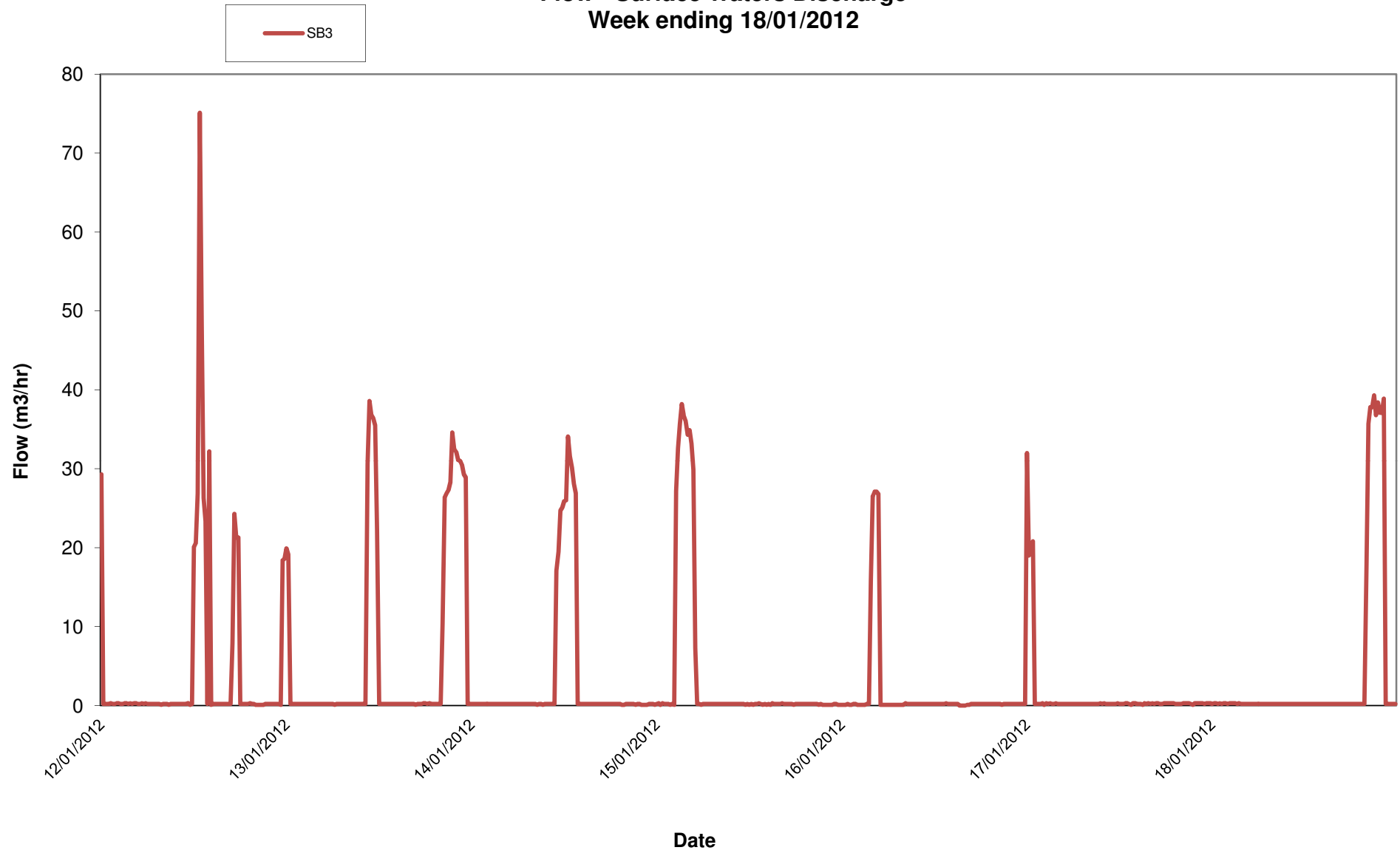
SB3



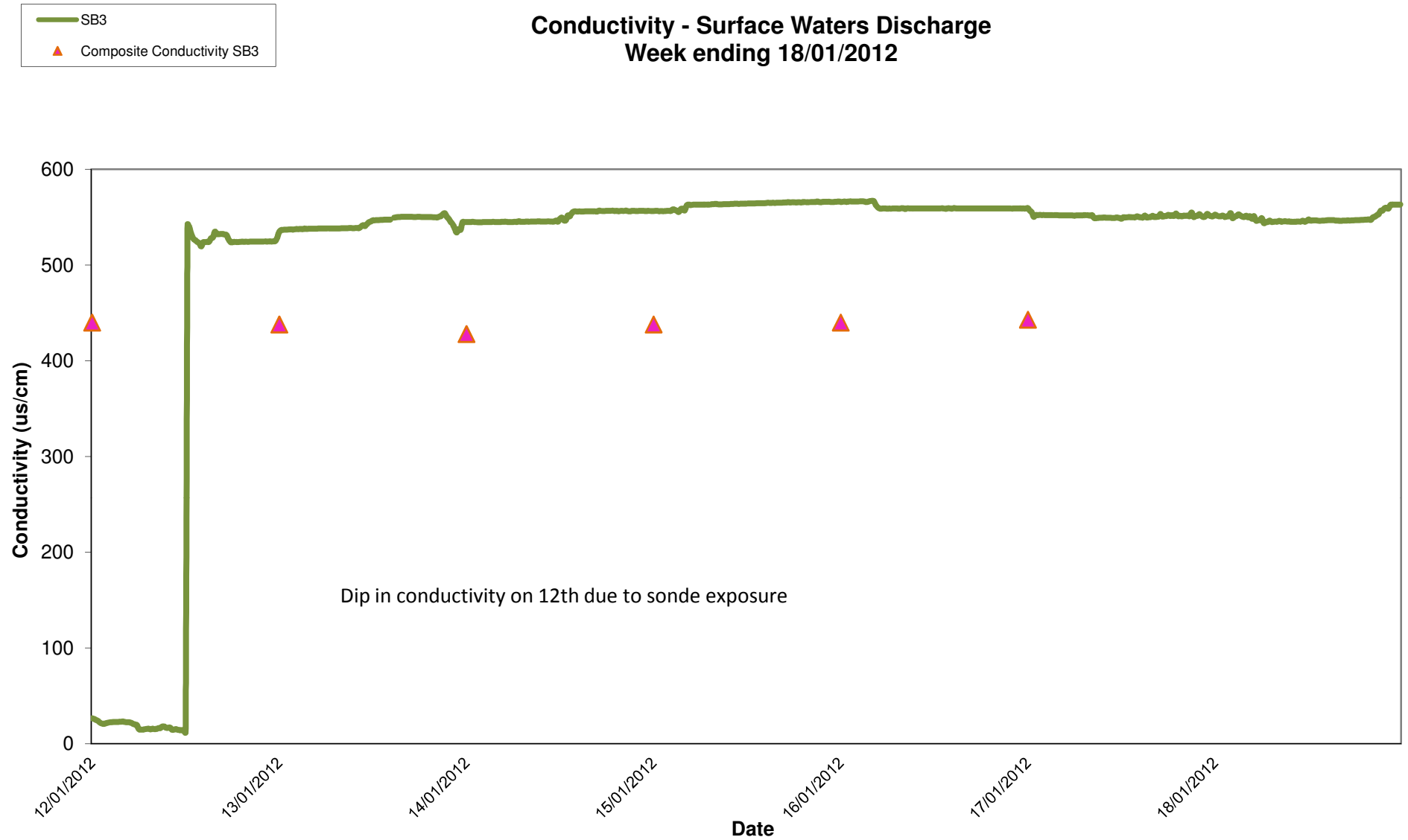
TSS- Surface Waters Discharge Week ending 18/01/2012



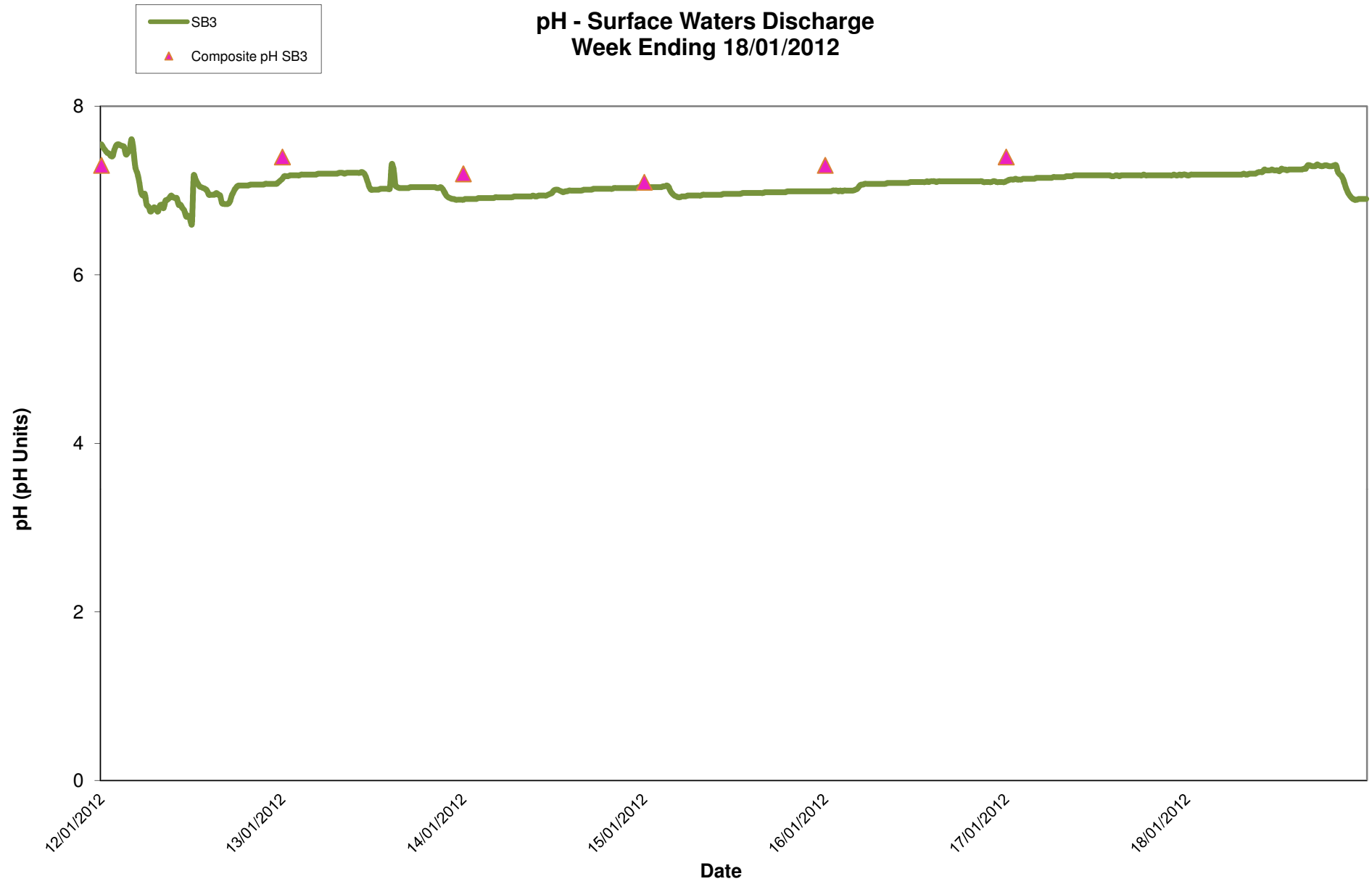
Flow - Surface Waters Discharge
Week ending 18/01/2012



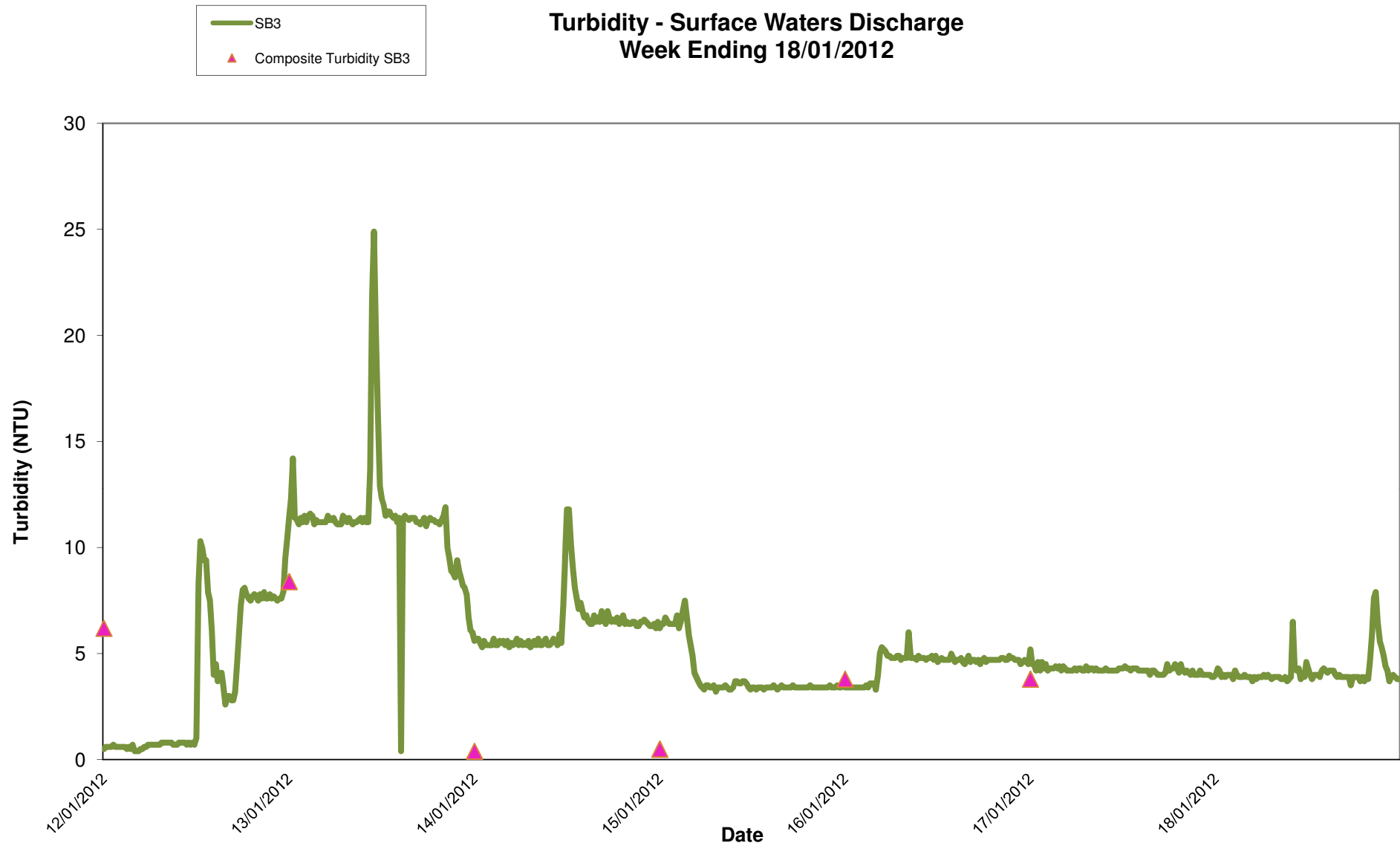
Conductivity - Surface Waters Discharge Week ending 18/01/2012



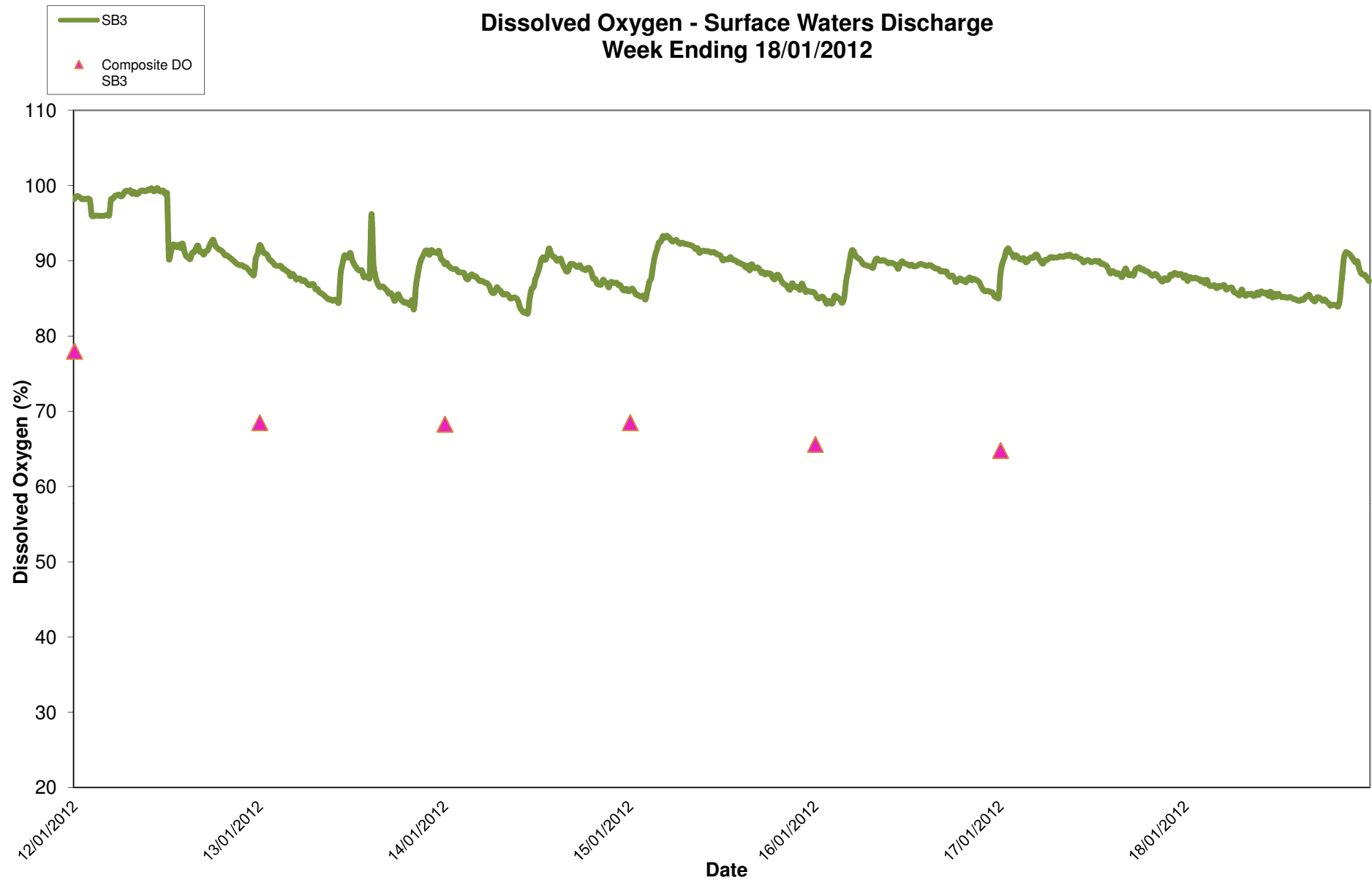
**pH - Surface Waters Discharge
Week Ending 18/01/2012**



Turbidity - Surface Waters Discharge Week Ending 18/01/2012



Dissolved Oxygen - Surface Waters Discharge Week Ending 18/01/2012



Appendix 1

Appendix 1: Surface Water Monitoring Record Sheet- Onsite Monitoring						
Location	Date	Temp	DO	Cond.	Turbidity	pH
		C	% Sat	µS/cm	NTU	pH Units
DL2	05/01/2011	8.9	43.1	310	3.7	6.6
DL2	06/01/2011	8.2	32.2	350	11.2	6.6
DL2	09/01/2011	5.7	41.4	426	5.0	7.0
DL2	10/01/2011	7.4	30.7	414	3.2	6.9
DL2	11/01/2011	8.0	44.8	306	0.9	7.1
	Grey shaded areas denote parameters that cannot or were not analysed on-site (results given are from CLS Labs).					
	= Indicative Only					
< LOD	= Below Limit of Detection		> LOD	= Above Limit of Detection		