

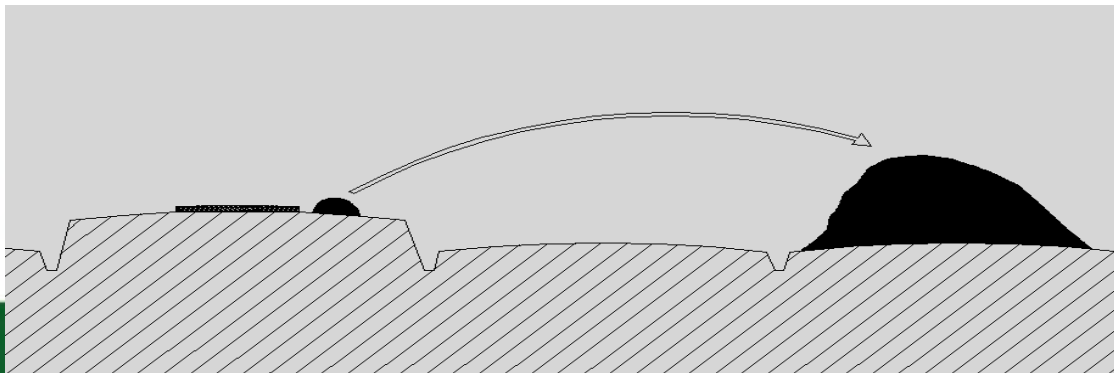
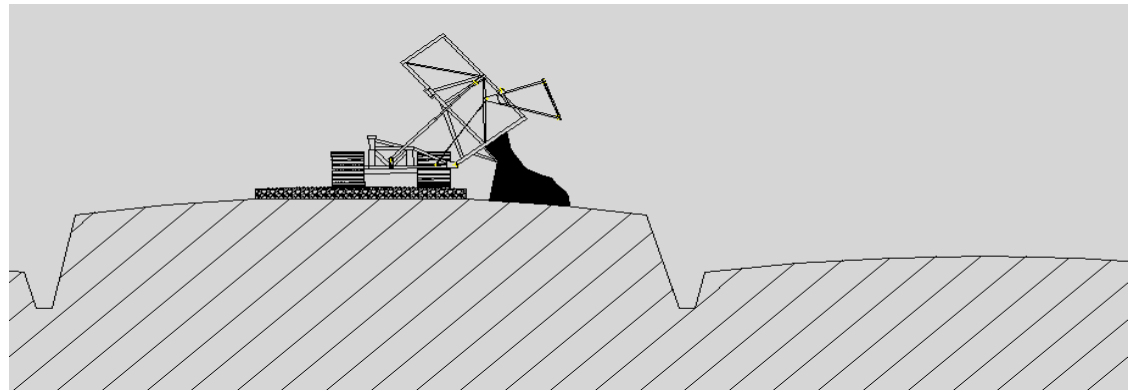
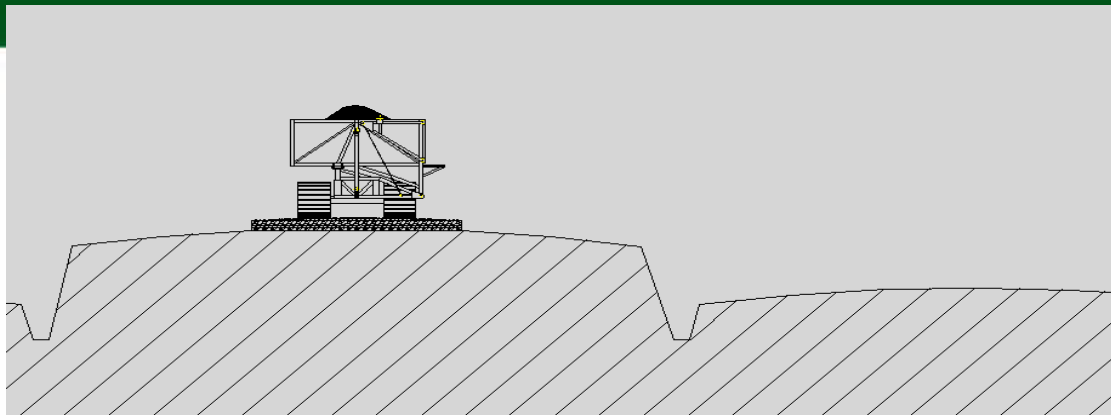
Srahmore Peat Repository

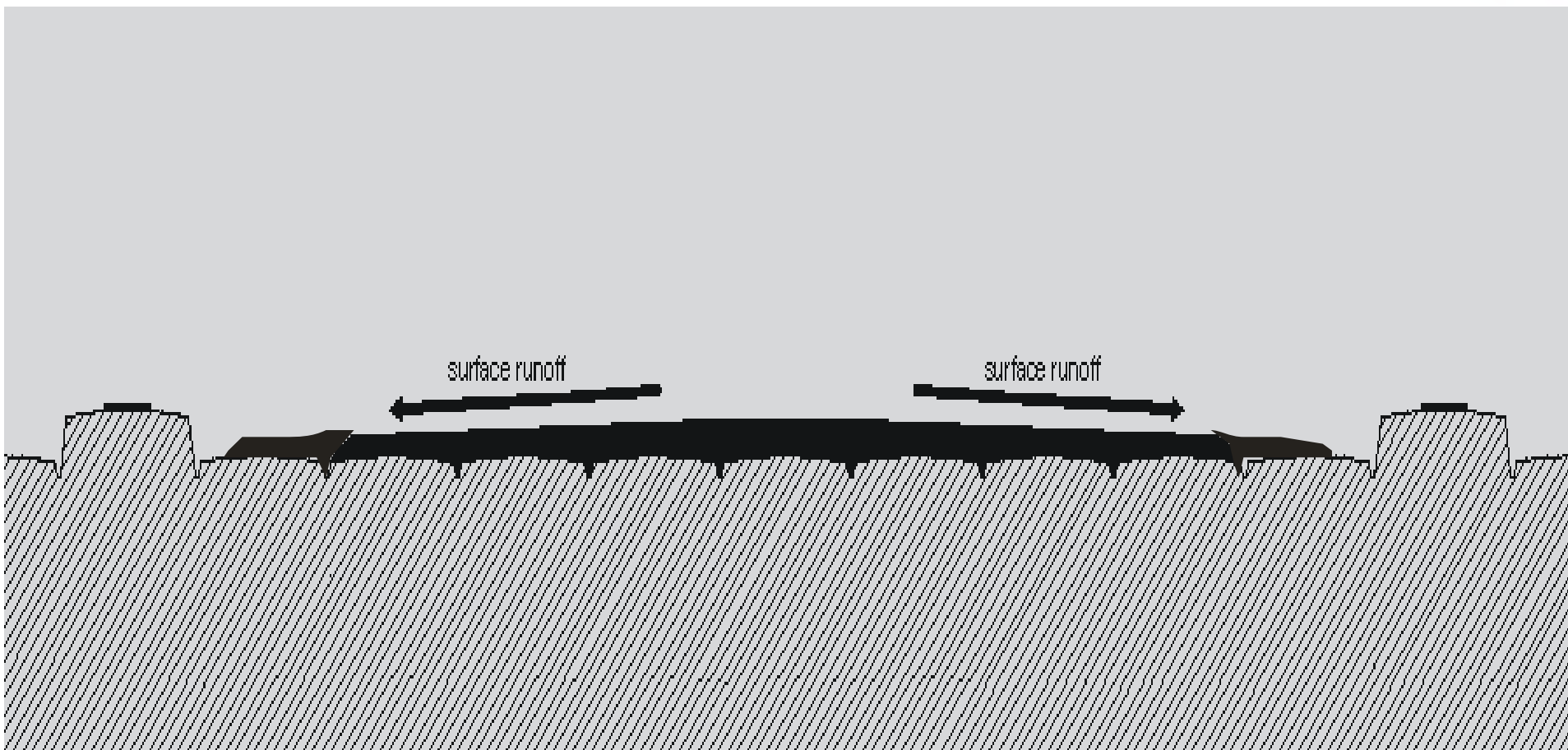
- October 2004 – Waste Licence W0199-01 permitting the acceptance of 450,000m³ of peat from the Bellanaboy Site with 12 conditions
- Up to July 2005 – Acceptance of 112,227 tonnes of peat. Ceased in July 2005
- 2006 – no peat deposition on site.
- April – June 2007 – 335,113 tonnes of peat – completion of permitted 450,000m³.
- 2008 – Decommissioning of the activity.



Srahmore Waste Licence

- May 2009 – Application for a Waste Licence review to permit an additional 75,000m³
- July 2010 – New Waste Licence issued for 75,000m³
- November 2011 – 16,185 tonnes
- 2012 – 57,794 tonnes
- 2013 – 854 tonnes
- 2014 – Decommissioning/Monitoring
- 2015 - Monitoring













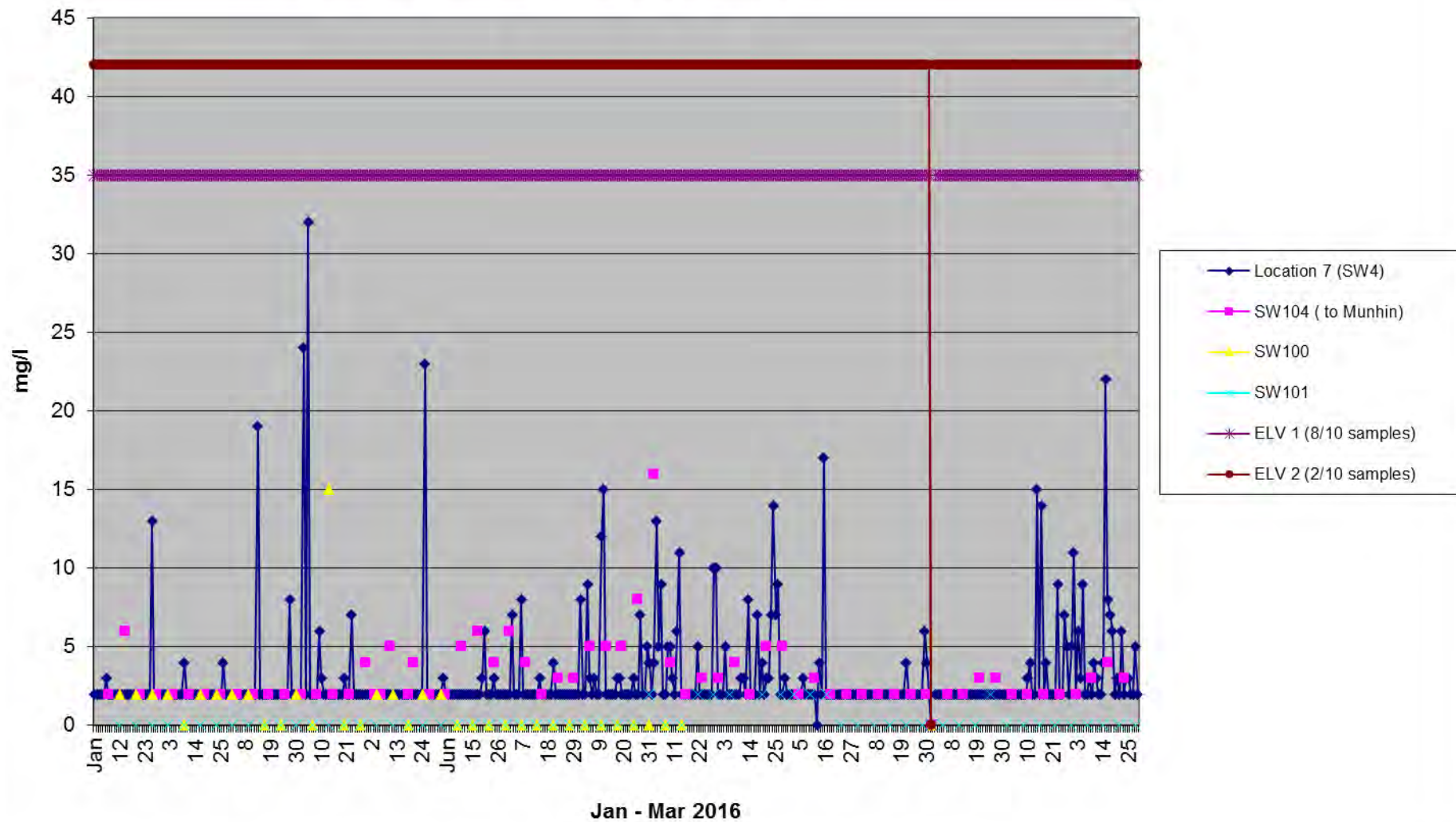


Compliance levels

Year	Complaints	Other	Dust	Water
2005	2	2	3	8
2006	0	0	0	0
2007	0	0	0	4
2008	0	0	0	1
2009	0	0	0	0
2010	0	0	0	1
2011	0	1	1	0
2012	0	2	0	3
2013	0	0	0	3
2014	0	0	0	0
2015	0	0	0	0



Suspended Solids (mg/l) 2015



Condition 10. Bog & PDA Rehabilitation and Aftercare

10.1 Following termination, or planned cessation for a period greater than six months, of use or involvement of all or part of the site in the licensed activity, the licensee shall, to the satisfaction Of the Agency, decommission, render safe or remove for disposal/recovery any soil, subsoil, buildings, plant or equipment, or any waste, materials or substances or other matter contained therein or thereon, that may result in environmental pollution.

Decommissioning

- Interceptor Maintenance
- Septic tanks maintenance
- Plant & Equipment
- Fuels and Oils
- Mats
- Buildings



On-going monitoring requirements

- Grab Sampling – Monthly.
- Composite – Weekly.
- Dust – Discontinued.
- Noise – Discontinued.
- Small Stream Risk Score.
- Munhin U/S and D/S – Quarterly.
- Inspections – Weekly.
- Groundwater – Every 2 yrs.
- Environmental Liabilities Risk Assessments.
- Closure Restoration Aftercare Management Plan.
- Stability Assessments.



Bord Na Móna Srahmore PDA Rehabilitation plan



PMC 2016



Outline

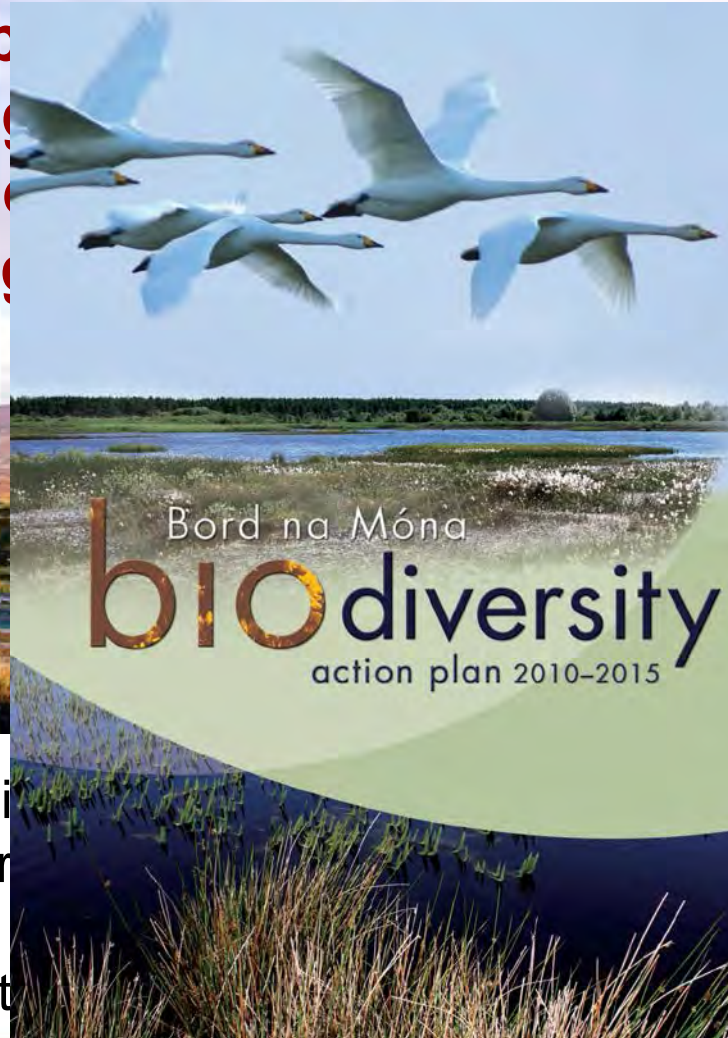
- Calendar of last 14 years
- Rehabilitation objectives
- Updates



Biodiversity Objective:

To p
in enhancing
the value
mana

na Móna
ate awareness of
ugh wise-use
and carbon



Biodiversi
Carbon – under

Communicat

ation/restoration
ning carbon pools and
nally and externally




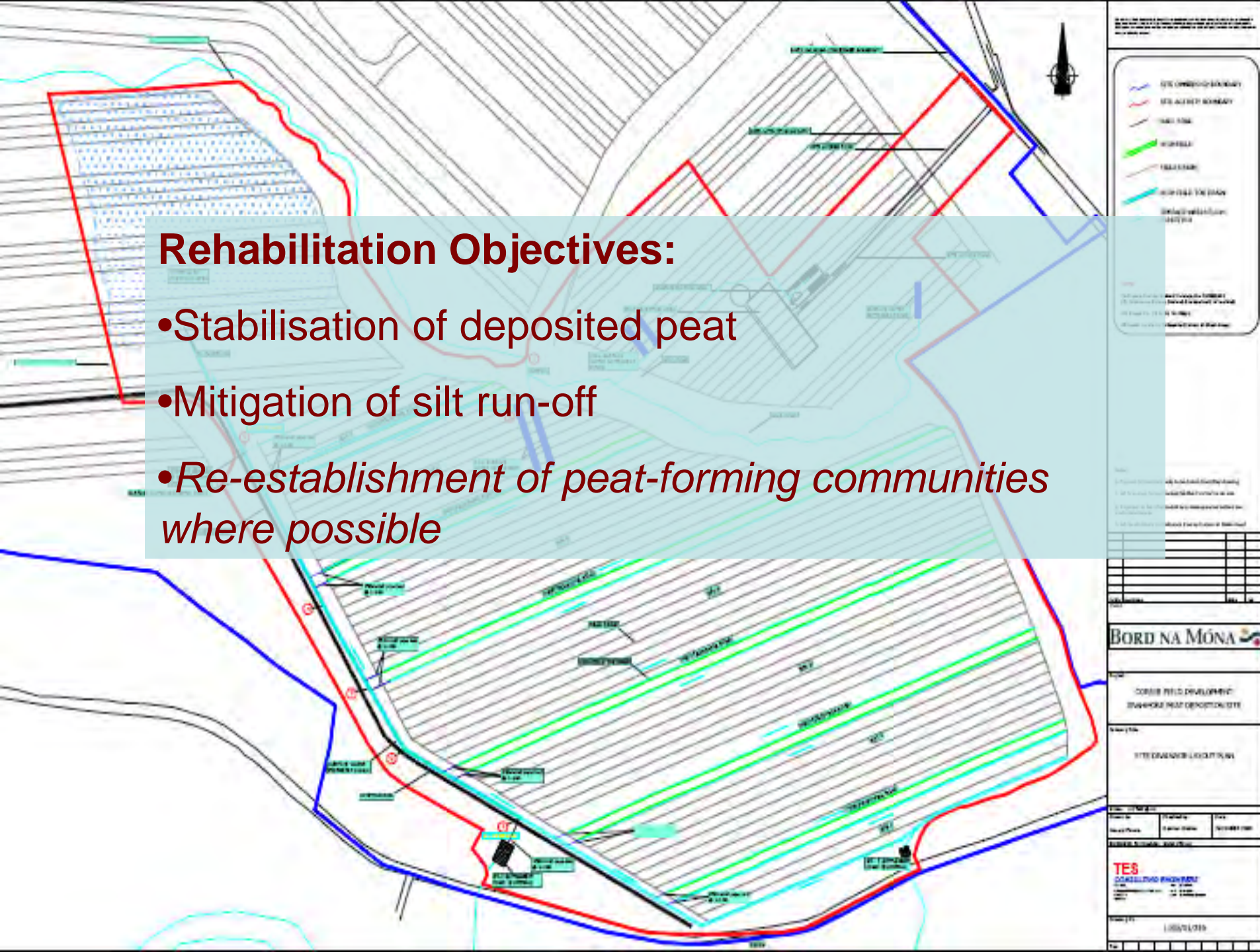
Srahmore PDA 2002-2016

- 2002/3: Site selection process
- 2004: W199/1 Srahmore PDA and associated facilities + Rehabilitation Plan
- 2005/2007: Transfer of peat onto site
- 2007: Spread of rushes across peat
- 2008: first *Sphagnum* propagules detected
- 2009: Ongoing monitoring vegetation
- 2010: Trial pools dug + *Sphagnum* in Bay 4
- 2011: W199/2 + amended Rehabilitation Plan
- 2012: Peat transfer; extensive pool excavation and *Sphagnum* inoculation in Bay 4
- 2013-2014: Monitoring; Sphagnum pools Bays 3 and 5
- 2015: Drain blocking in Bay 4
- 2016: Continue drain blocking Bays 3 and 5; monitor Bay 2
- 2017-2020: Monitoring; final drainage plan



Rehabilitation Objectives:

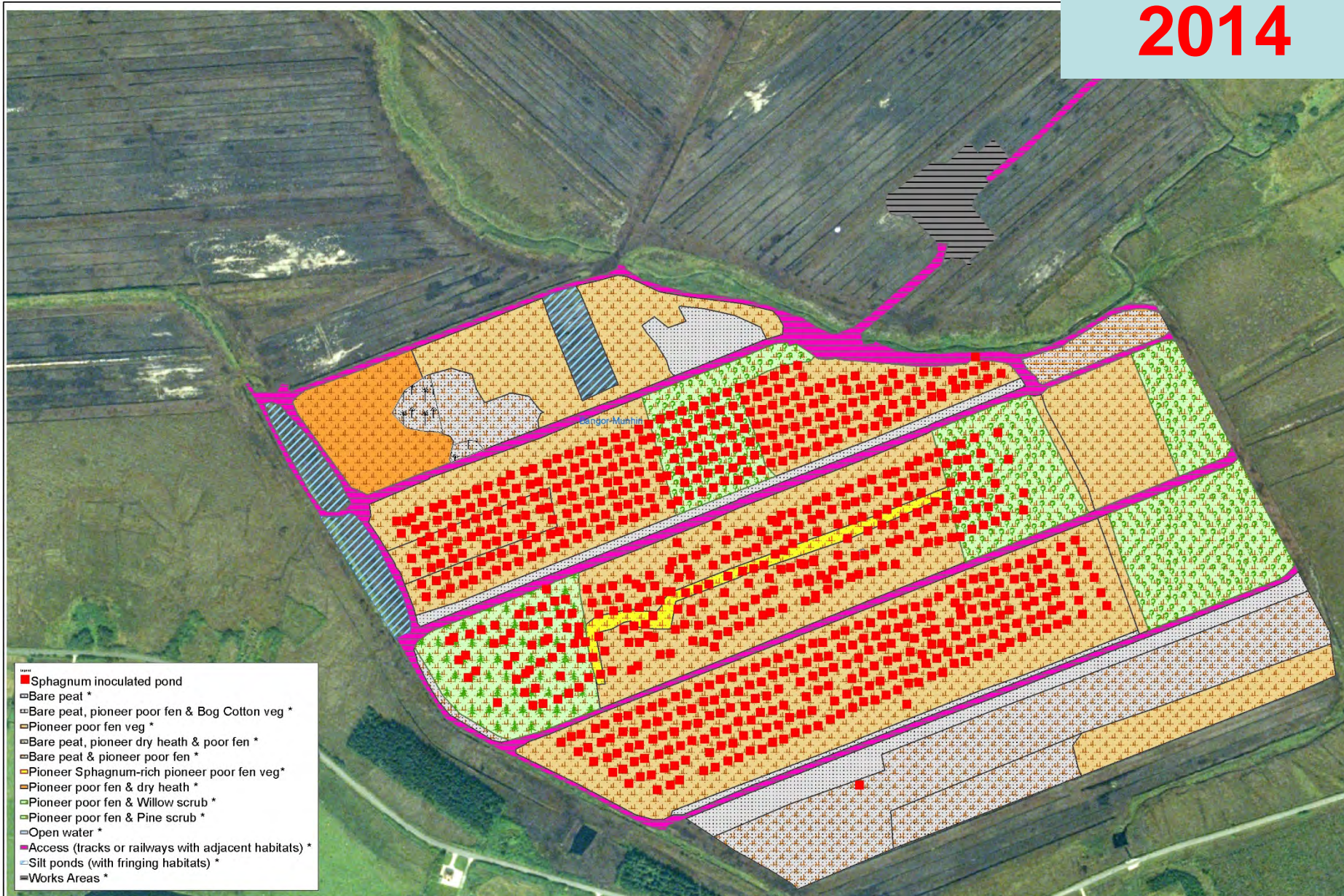
- 
- Stabilisation of deposited peat
 - Mitigation of silt run-off
 - Re-establishment of peat-forming communities where possible*



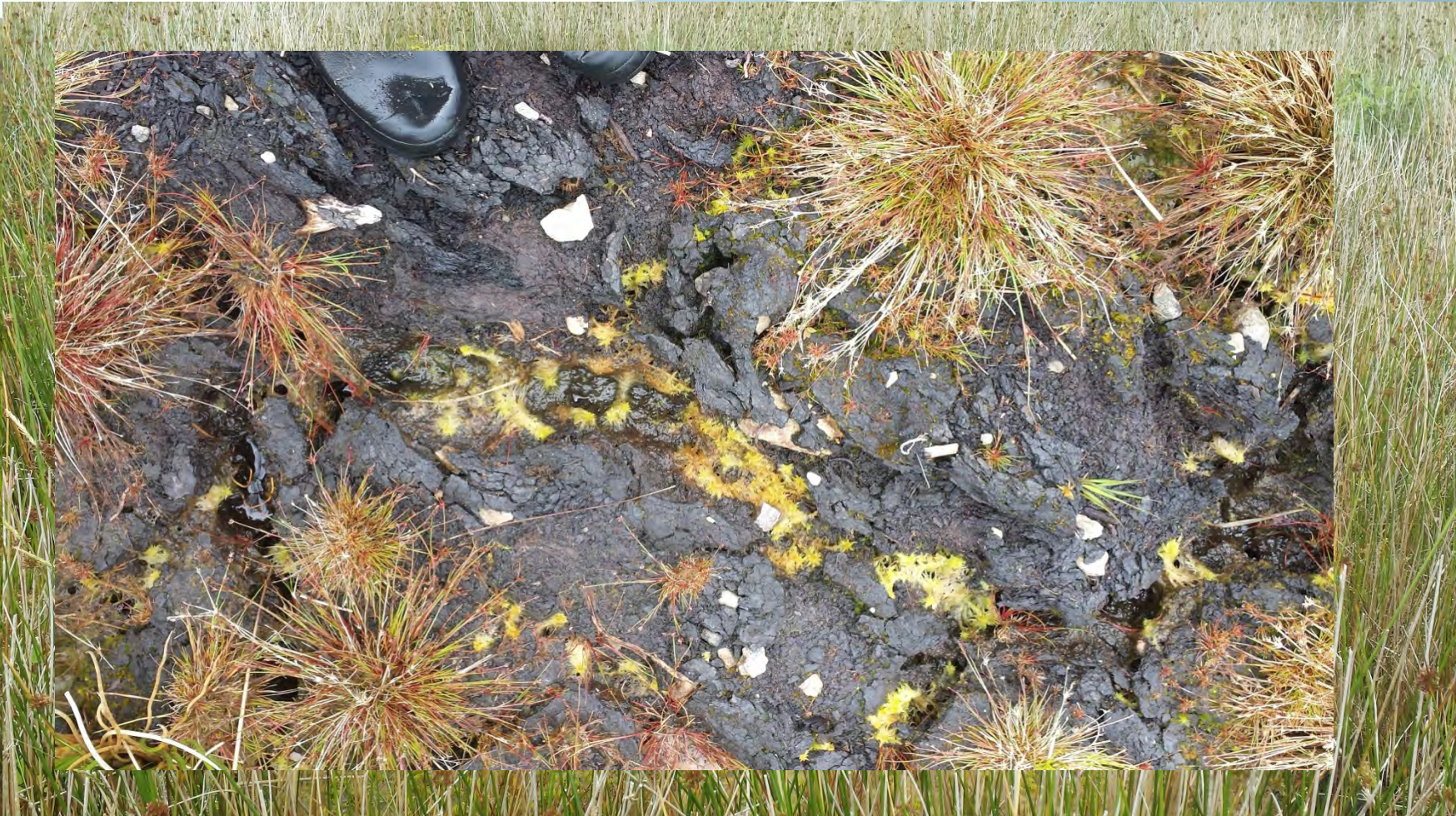




2014

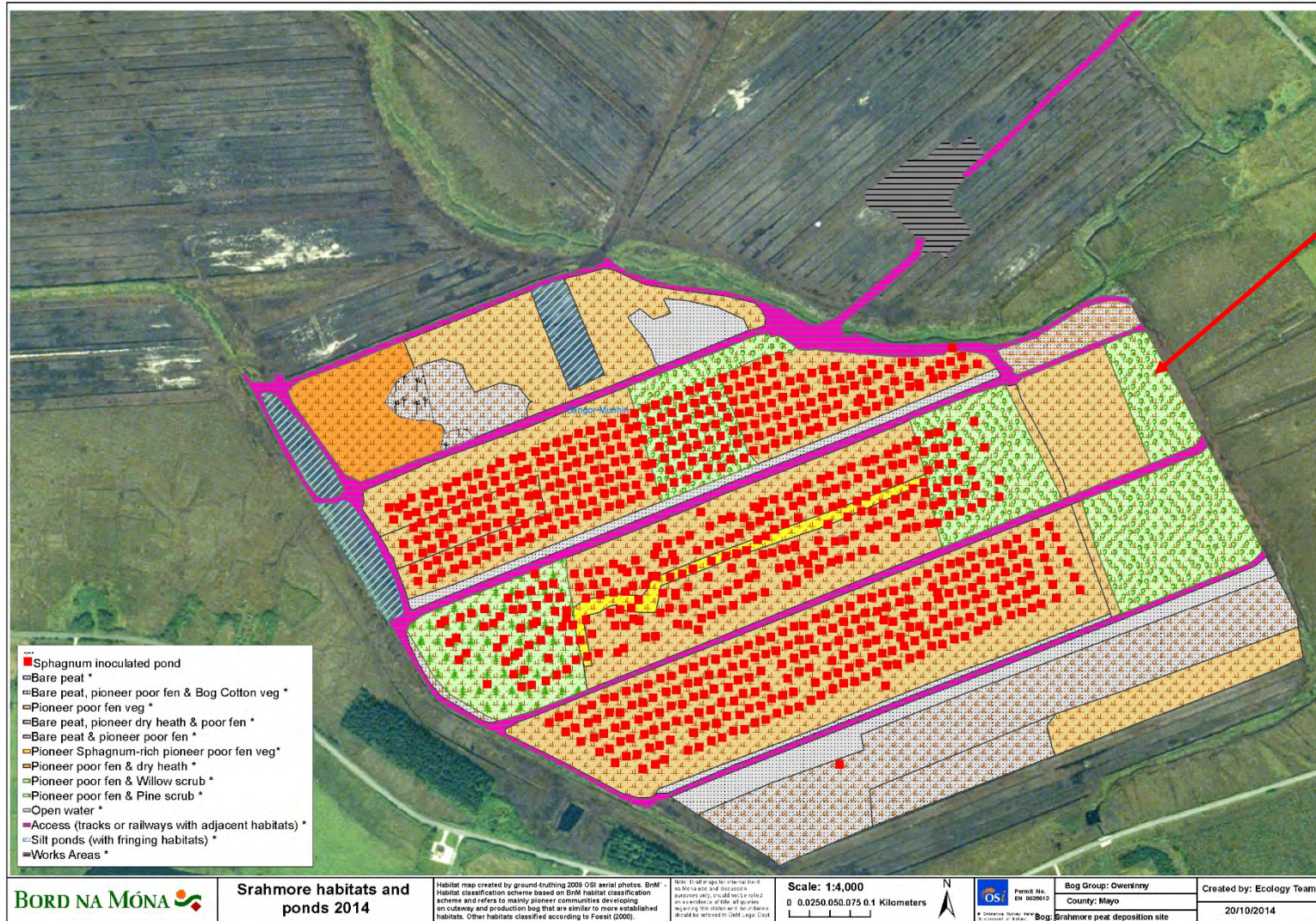


2014



BORD NA MÓNA 

Srahmore PDA 2005-2010/12/13/14



BORD NA MÓNA

Srahmore habitats and ponds 2014

Habitat map created by ground-truthing 2009 OSI aerial photos. BnM - Habitat classification scheme based on BnM habitat classification scheme and refers to mainly pioneer communities developing on cutaway and production bog that are similar to more established habitats. Other habitats classified according to Forest (2000).

Scale: 1:4,000
0 0.0250 0.075 0.1 Kilometers

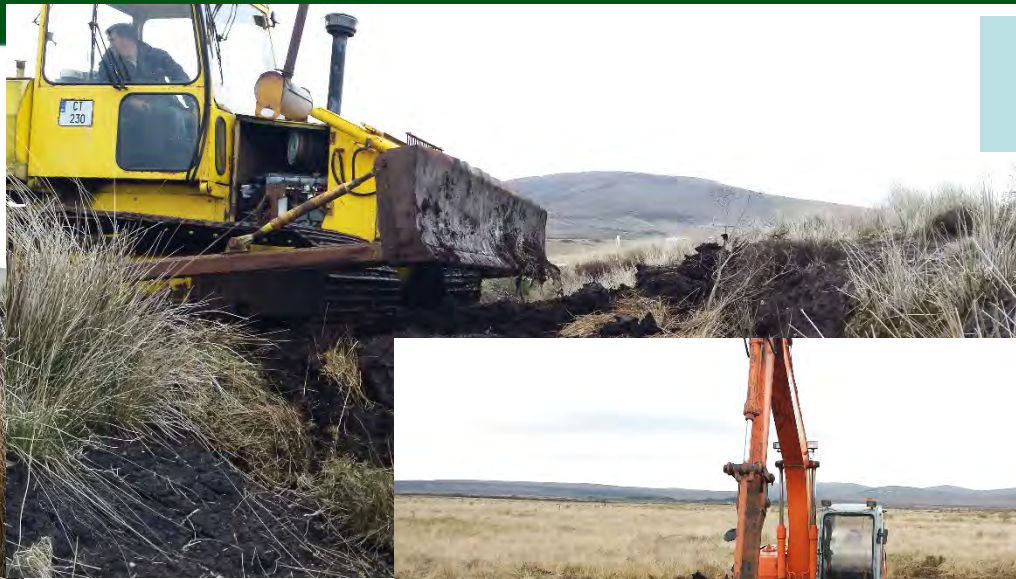
OSI
Permit No.
EN 000000

Bog Group: Ovenshry
County: Mayo
Bog: Srahmore peat deposition site

Created by: Ecology Team
20/10/2014

BORD NA MÓNA

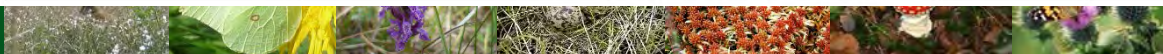
2015



2016



- Access (roads or railways with adjacent habitats)
- Silt ponds (with fringing habitats) *
- Works Areas *



Srahmore PDA 2002-2016

- 2002/3: Site selection process
- 2004: W199/1 Srahmore PDA and associated facilities + Rehabilitation Plan
- 2005/2007: Transfer of peat onto site
- 2007: Spread of rushes across peat
- 2008: first *Sphagnum* propagules detected
- 2009: Ongoing monitoring vegetation
- 2010: Trial pools dug + *Sphagnum* in Bay 4
- 2011: W199/2 + amended Rehabilitation Plan
- 2012: Peat transfer; extensive pool excavation and *Sphagnum* inoculation in Bay 4
- 2013-2014: Monitoring; Sphagnum pools Bays 3 and 5
- 2015: Drain blocking in Bay 4
- 2016: Continue drain blocking Bays 3 and 5; monitor Bay 2
- 2017-2020: Monitoring; final drainage plan



Thank You

