

1 Monitoring Data

Note: Due to a suspension of works and an ongoing site access issue the monitoring programme has had to be reduced. When site activities have resumed the full monitoring programme will recommence.

Vibration and noise monitoring has been suspended.

The elements of the monitoring plan still being monitored include:

1. Weekly water samples for on-site analysis
2. Downloading the in-situ TSS & Orthophosphate analysers and the weather station
3. Weekly sampling, for laboratory analysis, at SP1, SP3
4. Monthly sampling, for laboratory analysis, at D22, D62, and the MP series
5. Downloading the in-site groundwater sondes.

All monitoring data is presented in tabular form, see attached. The sonde data is presented graphically.

1.1 Rainfall Data

The weather data now being reported is generated by the on-site weather station.

Date	Rainfall (mm)		Date	Rainfall (mm)
01-Jul-05	1.6		08-Jul-05	5.8
02-Jul-05	2.6		09-Jul-05	0.4
03-Jul-05	0.8		10-Jul-05	0.2
04-Jul-05	1.0		11-Jul-05	0.0
05-Jul-05	8.4		12-Jul-05	0.0
06-Jul-05	4.6		13-Jul-05	0.0
07-Jul-05	0.8		14-Jul-05	2.0
Total = 28.2 mm				

Weekly Environmental Report - Status	Week Ending: Thur. 14 th July 2005
Generated By: Sandra Barber	
Checked By: Leslie Finnegan	

1.2 Summary

Environment	Comments
Surface Water	<p>On average all parameters were within the limits set.</p> <p>There were some single event exceedances but these were not prolonged and did not constitute incident classification.</p> <p>The Dissolved Oxygen probe readings have become erratic and would indicate that the meters need to be recalibrated.</p> <p>Turbidity readings in D22 exceeded the Target Level on 3 separate occasions during the past 2 weeks however only one event constituted an incident classification (see Section 2).</p>
Groundwater	<p>The outstanding analysis for the June 2005 sample has now been completed.</p> <p>The sonde data downloaded is shown graphically.</p>
Noise	
Vibration	
Dust	Dust Pots for June 2005 have been sent to the lab for analysis. Results will be reported when available.
Weather	There was a total of 28.2 mm of rainfall during the reporting period, with a temperature range of 9.4 to 24.0 °C

2 Environmental Incidents/Near misses/Complaints

D22 experienced one prolonged turbidity exceedance on the 11th and 12th July which classed as an incident. The cause of this exceedance is unknown and may be attributed to debris lodging in the protective casing around the turbidity probe.

Surface Water Monitoring Record Sheet													no...		1 of 1	
Conducted by							Approved by									
Name: Sandra Barber				Signed			Name				Leslie Finnegan			Signed		
Determinant Results																
	Date	Cond. µS/cm	Temp °C	Turbidity NTU	DO % Sat	TSS mg l ⁻¹	pH	Ortho- phosphate as P µg l ⁻¹	Nitrate as N mg l ⁻¹	Total Phosphorus as P (sw) mg l ⁻¹	Ammonia as NH ₃ -N mg l ⁻¹	Ammonium as NH ₄ mg l ⁻¹	Nitrite as N mg l ⁻¹	Comments		
Action Limits		400		150		25	<3.5 or >7.5	40			0.2					
Target Limits		500		200		35	<3 or >8	70			0.5					
Settlement Pond Monitoring																
SP1	01-Jul-05	268	17.9	12.59	87		8.11									
SP3	01-Jul-05	322	17.6	16.26	71		7.45									
SP1	02-Jul-05	316	16.8	7.99	70		6.53									
SP3	02-Jul-05	287	16.9	7.84	65		7									
SP1	04-Jul-05	253	14	5.93	76		7.72									
SP3	04-Jul-05	315	14.3	9.38	60		7.63									
SP1 - Lab	04-Jul-05	247		5.4		<4	7.6	29	<0.1	0.081	<0.005	<0.01	<0.005			
SP3 - Lab	04-Jul-05	247		8.3		6	7.3	110	<0.1	0.235	0.018	0.023	<0.005			
SP1	05-Jul-05															
SP3	05-Jul-05															
SP1	06-Jul-05															
SP3	06-Jul-05															
SP1	07-Jul-05															
SP3	07-Jul-05															
SP1 - Lab	07-Jul-05	241		3.5		<4	6.9	21	<0.1	0.057	0.042	0.054	<0.005			
SP3 - Lab	07-Jul-05	237		2.2		<4	6.7	52	<0.1	0.107	0.082	0.106	<0.005			
SP1	08-Jul-05															
SP3	08-Jul-05															
SP1	09-Jul-05															
SP3	09-Jul-05															
SP1	11-Jul-05															
SP3	11-Jul-05															
SP1 - Lab	11-Jul-05	237		3.4		Not Ready	7.2	15	<0.1	0.057	0.016	0.02	<0.005			
SP3 - Lab	11-Jul-05	240		4.2		<4	6.8	79	<0.1	0.158	0.078	0.1	<0.005			
SP1	12-Jul-05															
SP3	12-Jul-05															
SP1	13-Jul-05															
SP3	13-Jul-05															
SP1	14-Jul-05															
SP3	14-Jul-05															
Additional Surface Water Monitoring																
D22 - Lab	04-Jul-05	189.3		7		<4	6.9	179	0.215	0.236	0.179	0.082	0.064			
D62 - Lab	04-Jul-05	132.8		0.8		5	5.9	43	<0.1	0.076	0.018	0.024	<0.005			
D22 - Lab	12-Jul-05	120		0.6		<4	5.6	40	<0.1	0.075	0.02	0.025	<0.005			
D62 - Lab	12-Jul-05	174		6.7		<4	6.3	157	0.269	0.216	0.053	0.068	<0.005			
SP3 Composite	01-Jul-05	255		18.1		15	7.4	105	<0.1	0.249	0.065	0.084	<0.005			
SP3 Composite	02-Jul-05	238		9		12	7.3	95	<0.1	0.223	0.108	0.14	<0.005			
SP3 Composite	04-Jul-05	235		8.6		5	7.4	120	<0.1	0.183	0.112	0.145	<0.005			
D22	Sonde Data Presented Graphically															
D62	Sonde Data Presented Graphically															

Note:

LAB - Carried out by CLS Laboratories

Grey shaded areas denote parameters that cannot be analysed on-site or the lab.

Results detailed above are from on site grab samples only, Data recorded continuously is shown on the following graphs

Graphs provided for SP1, SP2, D22 and D62 for: Temperature, Turbidity, pH, Conductivity, Orthophosphate, Total Suspended Solids and Total Ammonia

pH Target and Action Limits to be approved by Statutory Authorities

Conducted by	Approved by
Name: Sandra Barber	Name: Leslie Finnegan
Signed	Signed

Determinant Results													
Location	Date	Cond. uS/cm	Temp °C	BOD mg l ⁻¹	DO % Sat	TSS mg l ⁻¹	Phosphate as P ug l ⁻¹	pH	Total Hardness mg/l CaCO3	Nitrite as NO ₂ mg l ⁻¹	Nitrate as NO ₃ mg l ⁻¹	Phosphate as PO ₄ mg l ⁻¹	Ammonia mg l ⁻¹
MP 1													
MP 2													
MP 3	20-Jun-05	256	11.2	1	40	250	667	5.7	93.4	<0.017	<0.44	2.048	
MP 4													
MP 5	20-Jun-05	416	10.9	5	63	37	485	6	158.7	<0.017	0.901	1.489	
MP 6													
MP 7													
MP 8	20-Jun-05	436	11.2	2	38	472	207	6	125.6	<0.017	<0.44	0.635	
MP 9	20-Jun-05	224	12.9	<1	40	<4	186	7	72.15	<0.017	<0.44	0.571	
MP 10a	20-Jun-05	695	10.3	3	25	6366	< 10	6.2	356.9	<0.017	<0.44	<0.03	
MEL BR4a	20-Jun-05	247	12.2	<1	25	200	175	6.2	96.1	<0.017	0.448	0.536	

Location	Date	TDS mg l ⁻¹	Arsenic ug l ⁻¹	Mercury ug l ⁻¹	Lead ug l ⁻¹	Aluminium ug l ⁻¹	Zinc ug l ⁻¹	Chromium ug l ⁻¹	Copper ug l ⁻¹	Cadmium ug l ⁻¹	Iron ug l ⁻¹	Tin ug l ⁻¹	
MP 1													
MP 2													
MP 3	20-Jun-05	241	2	<0.05	<5	65	20	<1	6	<0.4	8780	<5	
MP 4													
MP 5	20-Jun-05	256	<1	<0.05	<5	12	46	1	<5	<0.4	7735	<5	
MP 6													
MP 7													
MP 8	20-Jun-05	267	<1	<0.05	<5	<3	18	<1	<5	<0.4	18	<5	
MP 9	20-Jun-05	136	<1	<0.05	<5	<3	20	<1	<5	<0.4	76	<5	
MP 10a	20-Jun-05	434	<1	<0.05	<5	<3	9	<1	<5	0.5	25	<5	
MEL BR4a	20-Jun-05	198	<1	<0.05	<5	<3	13	<1	<5	<0.4	14	<5	

Note: Results detailed above are from on site grab samples only. Data recorded continuously is shown on the following graphs
 Graphs provided for MP1, MP2, MP4, MP6 and MP7 for: Temperature, Conductivity, and pH.

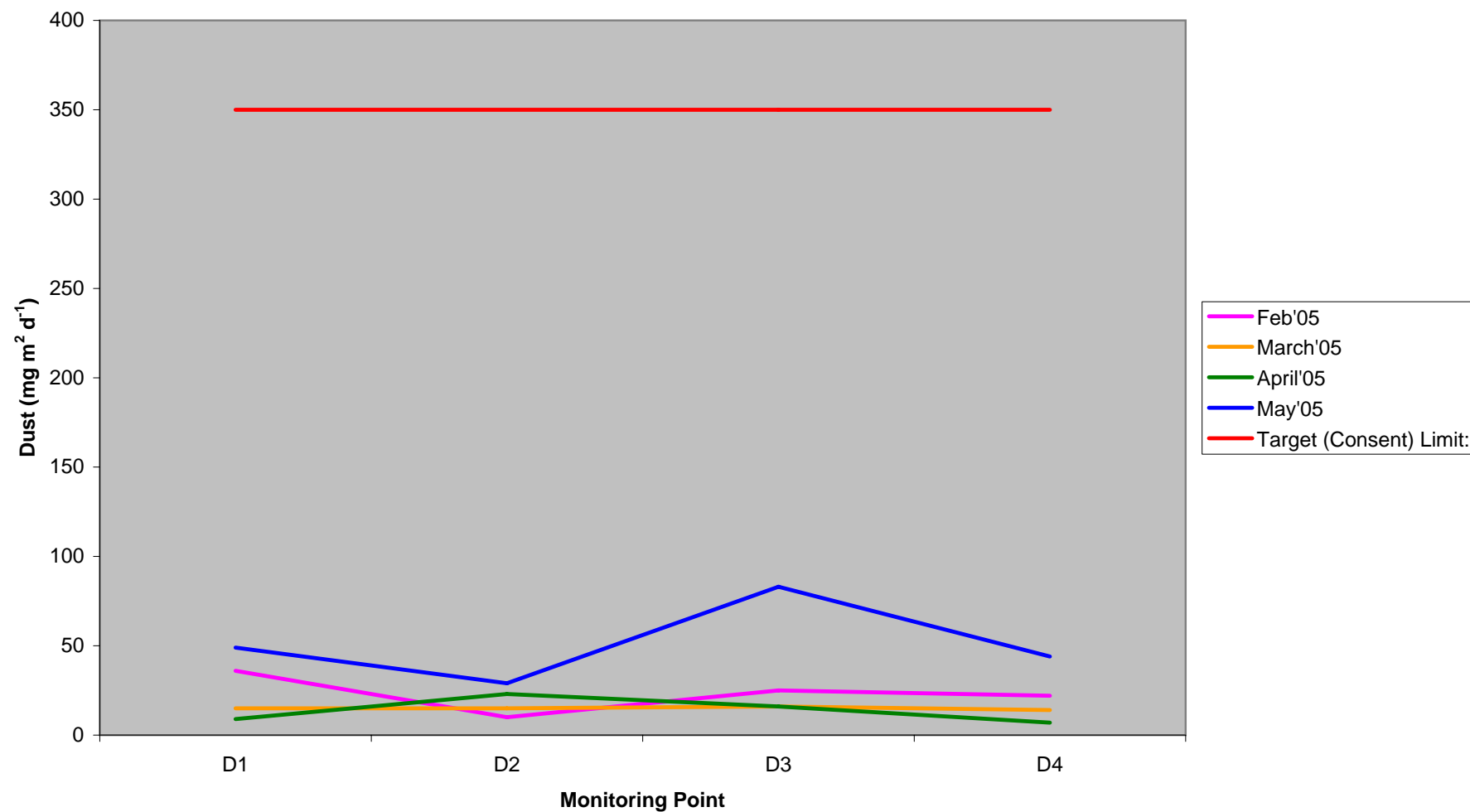
Noise Monitoring Record Sheet										no... 1 of 1		
Conducted by						Approved by						
Name: Sandra Barber						Signed		Name: Leslie Finnegan			Signed	
Determinant Results												
Location	Air Temp.	Start Date	Time	Duration	Serial No.	Wind		Results dB			*Comments	
						Speed (m/s)*	Direction (Degrees)	L _{Aeq}	L _{Amin}	L _{Amax}		
Action Limit								60				
Target Limit								65				
N1												
N1												
N1												
N1												
N1												
N1												
N1												
N1												
N1												
N1												
N1												
N2												
N2												
N2												
N2												
N2												
N2												
N2												
N2												
N2												
N2												
N2												
N2												
N2												

* Wind speeds in excess of 5 m/s negatively impact noise readings (as per EPA Guidance Note on Noise Measurement).

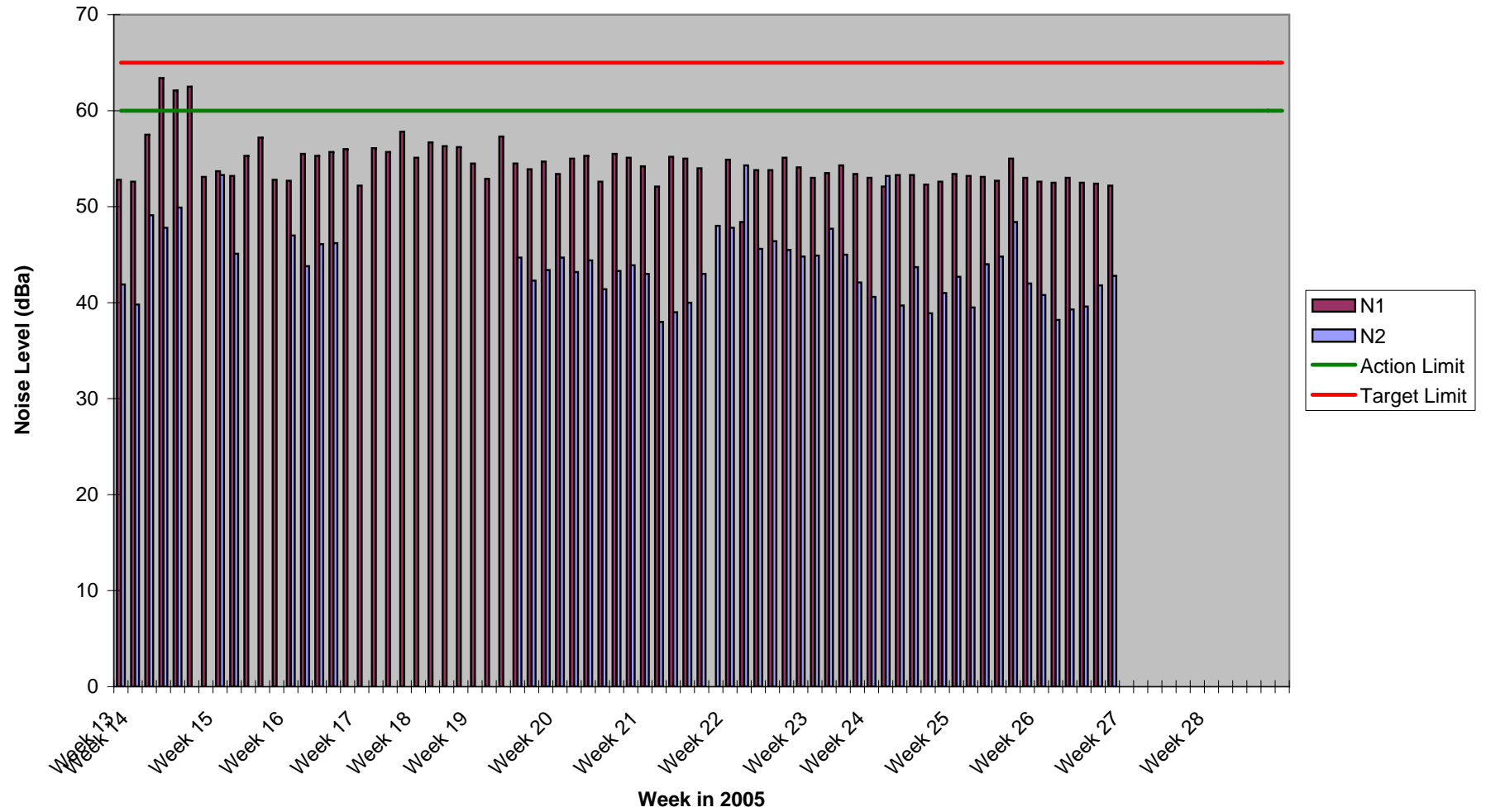
Dust Monitoring Record Sheet				no... 1 of 1			
Conducted by			Approved by				
Name: Sandra Barber		Signed		Name: Leslie Finnegan		Signed	
Determinant Results							
	Date Positioned	Date Removed	Ref. Number	Date Dispatched	Date Returned	Weight (mg/sq.m/day)	Comments
Target (Consent) Limit: 350 mg m² d⁻¹ on as a 30 day average							
D1	31/01/2005	02/03/2005	59793	02/03/2005	24/03/2005	36	
D2	31/01/2005	02/03/2005	59794	02/03/2005	24/03/2005	10	
D3	31/01/2005	02/03/2005	59795	02/03/2005	24/03/2005	25	
D4	31/01/2005	02/03/2005	59796	02/03/2005	24/03/2005	22	
D1	02/03/2005	01/04/2005	61907	01/04/2005	08/04/2005	15	
D2	02/03/2005	01/04/2005	61908	01/04/2005	08/04/2005	15	
D3	02/03/2005	01/04/2005	61909	01/04/2005	08/04/2005	16	
D4	02/03/2005	01/04/2005	61910	01/04/2005	08/04/2005	14	
D1	01/04/2005	04/05/2005	64400	04/05/2005	09/05/2005	9	
D2	01/04/2005	04/05/2005	64401	04/05/2005	09/05/2005	23	
D3	01/04/2005	04/05/2005	64402	04/05/2005	09/05/2005	16	
D4	01/04/2005	04/05/2005	64403	04/05/2005	09/05/2005	7	
D1	04/05/2005	07/06/2005	67524	07/06/2005	10/06/2006	49	
D2	04/05/2005	07/06/2005	67525	07/06/2005	10/06/2006	29	
D3	04/05/2005	07/06/2005	67526	07/06/2005	10/06/2006	83	
D4	04/05/2005	07/06/2005	67527	07/06/2005	10/06/2006	44	
D1	07/06/2005	13/07/2005		13/07/2005			
D2	07/06/2005	13/07/2005		13/07/2005			
D3	07/06/2005	13/07/2005		13/07/2005			
D4	07/06/2005	13/07/2005		13/07/2005			

Monitoring Points are numbered clockwise through the Cardinal Marks (N, E, S, W)
Monitoring Results will be presented monthly

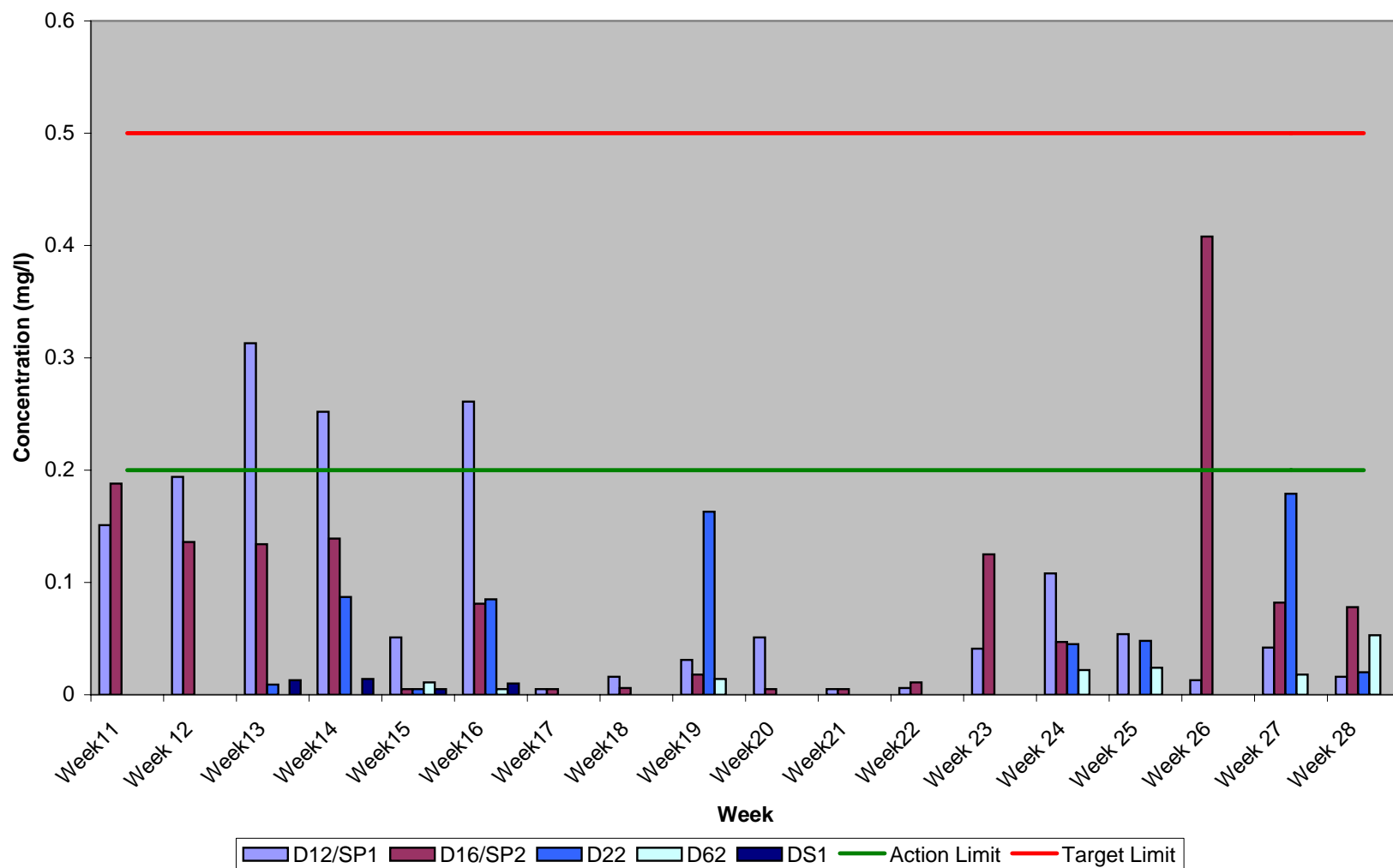
**Dust
Compiled Results 2005**



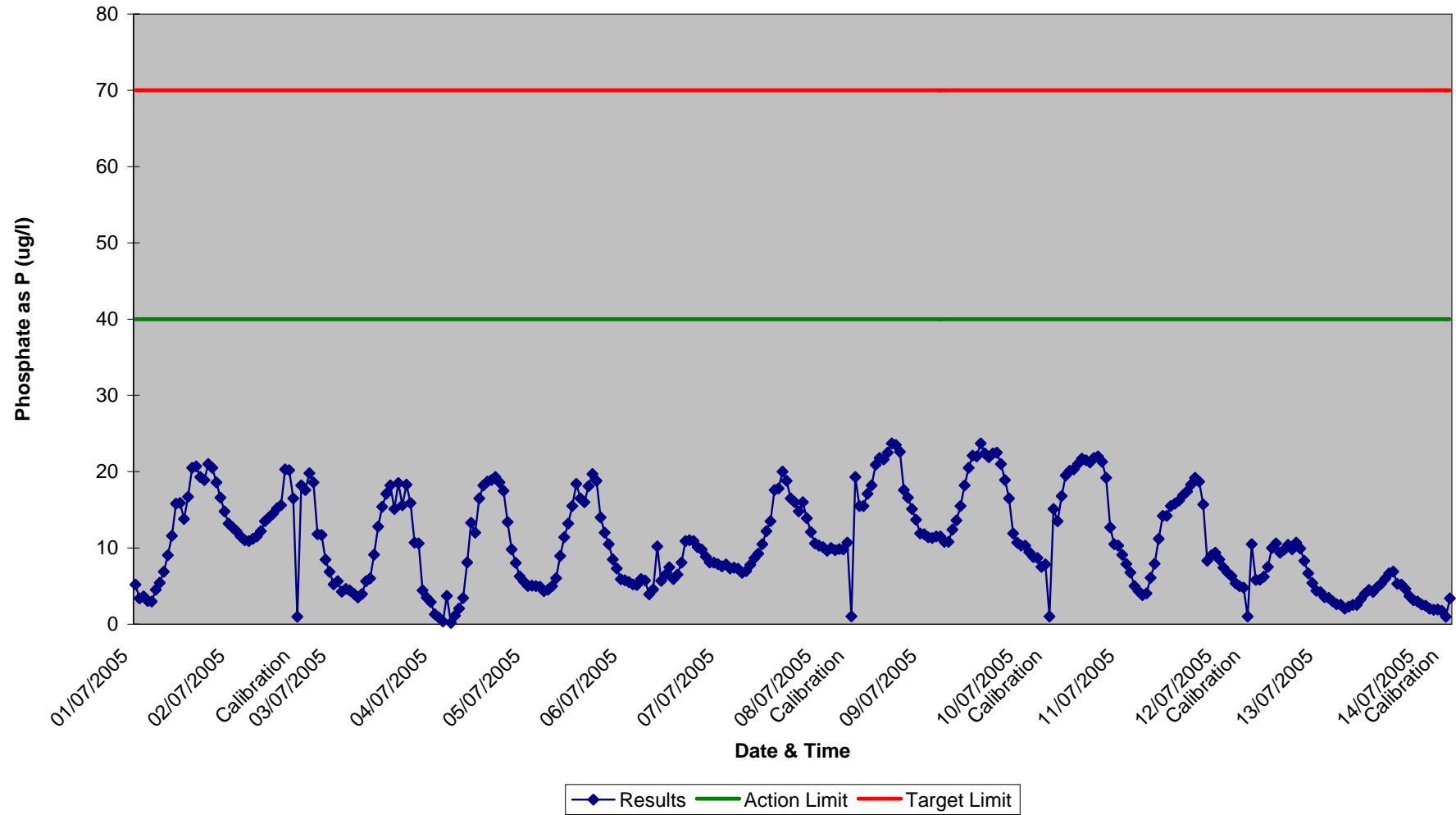
Noise Monitoring Compiled Results 2005



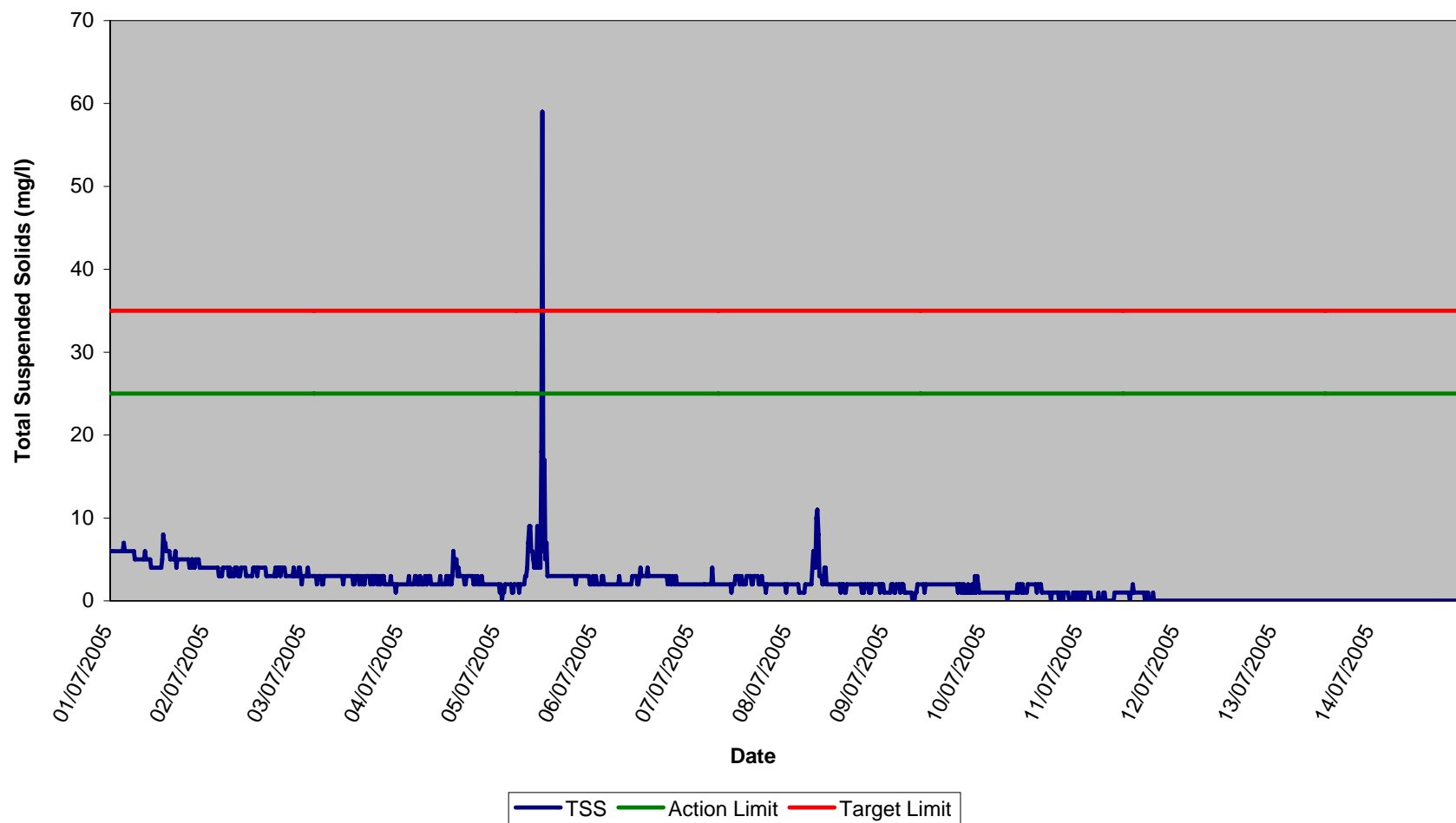
Ammonia as $\text{NH}_3\text{-N}$, Compiled Results 2005



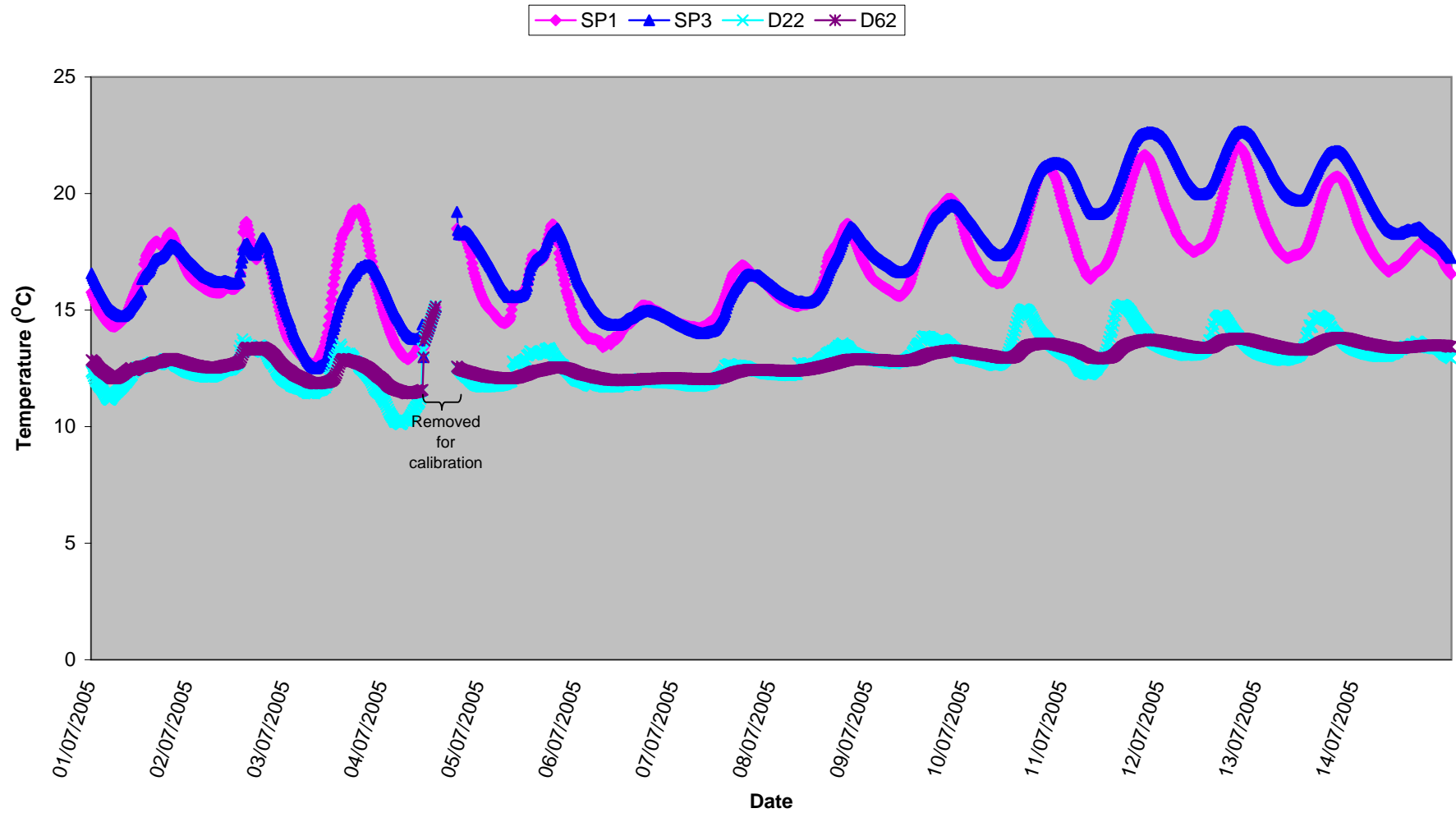
Surface Water (SP1)
Orthophosphate, Week 27/28 2005



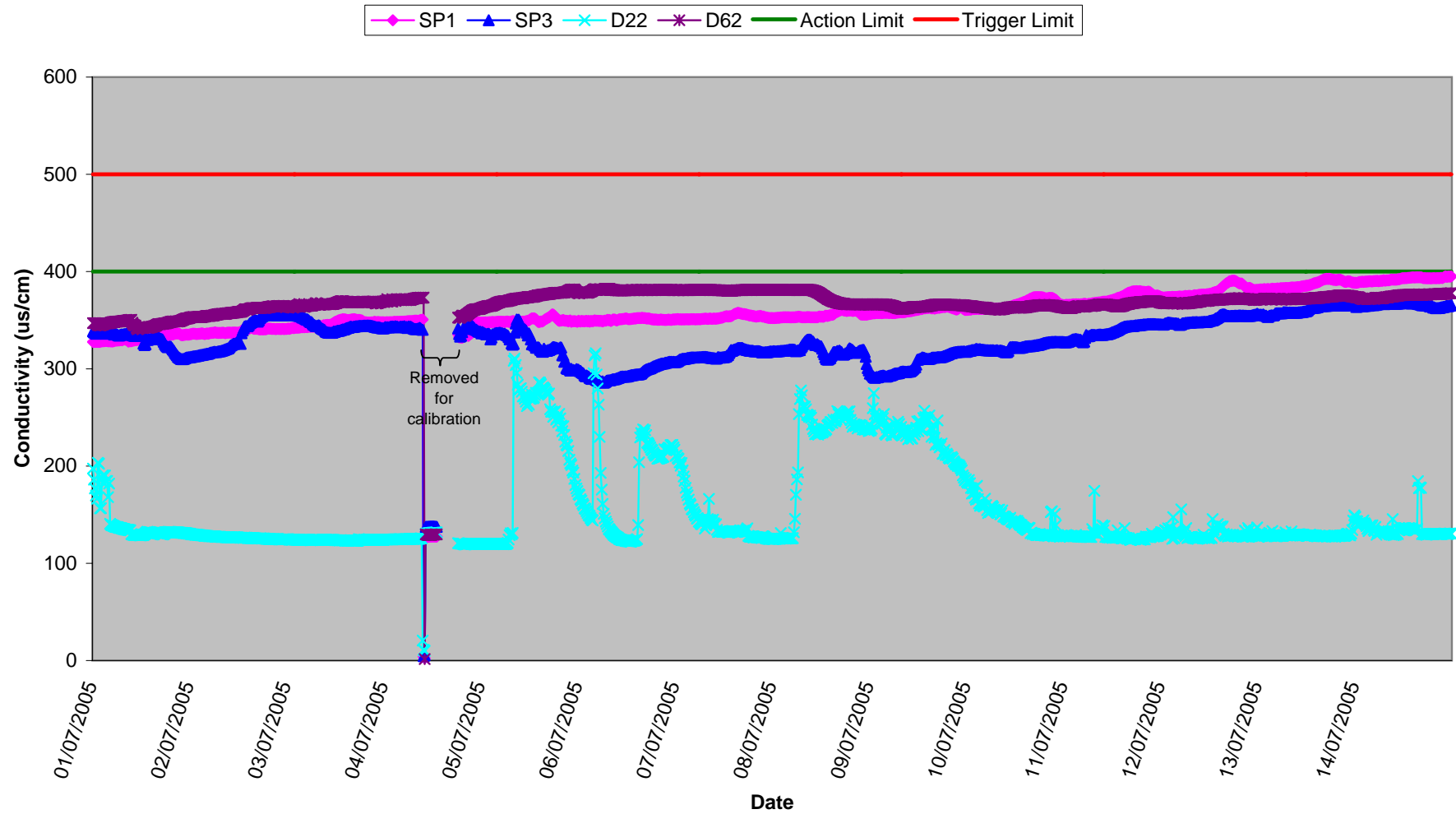
Surface Water (SP1)
Total Suspended Solids, Weeks 27/28 2005



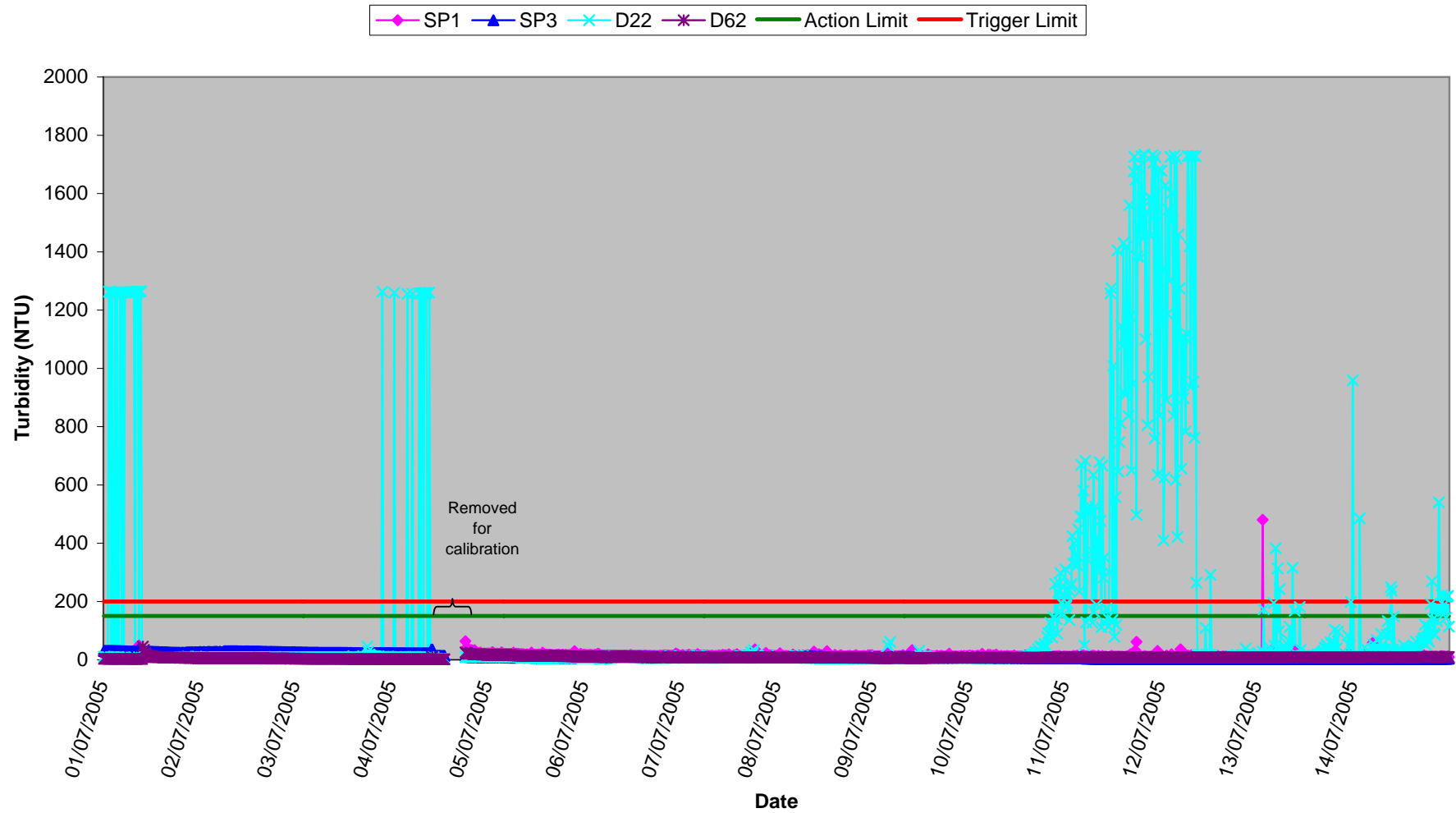
Surface Waters
Temperature, Weeks 27/28 2005



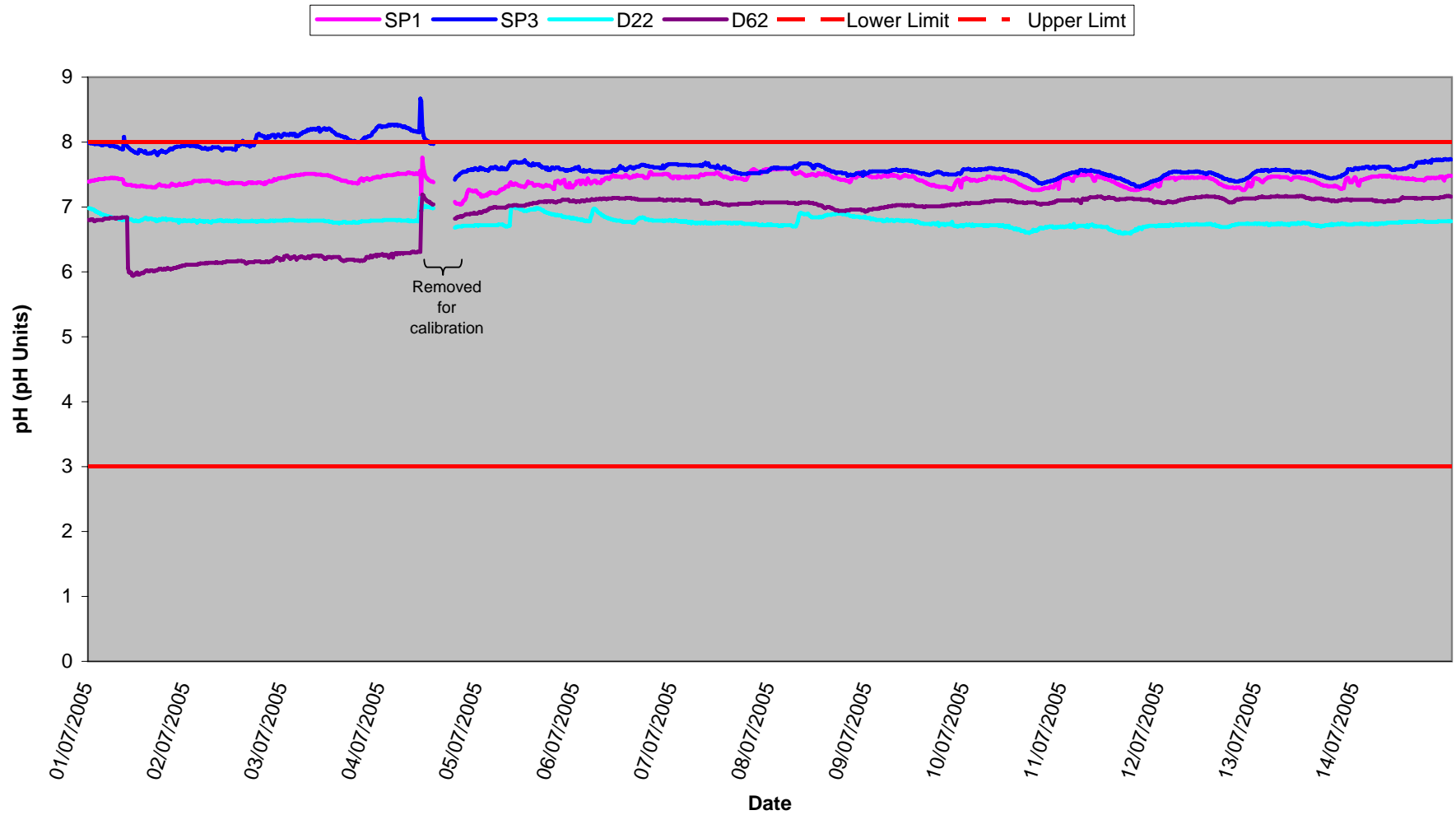
Surface Waters
Conductivity, Weeks 27/28 2005



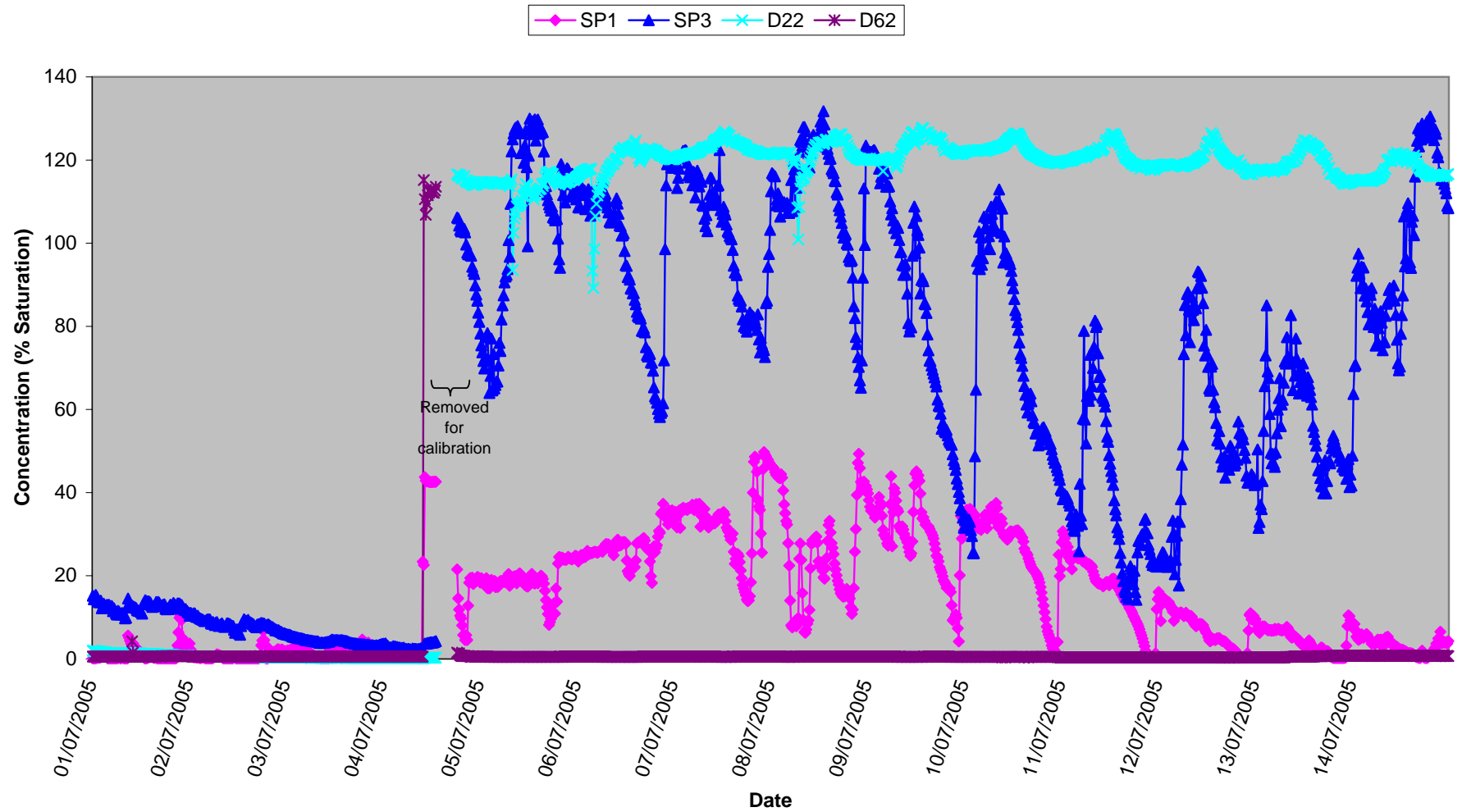
Surface Waters Turbidity, Weeks 27/28 2005



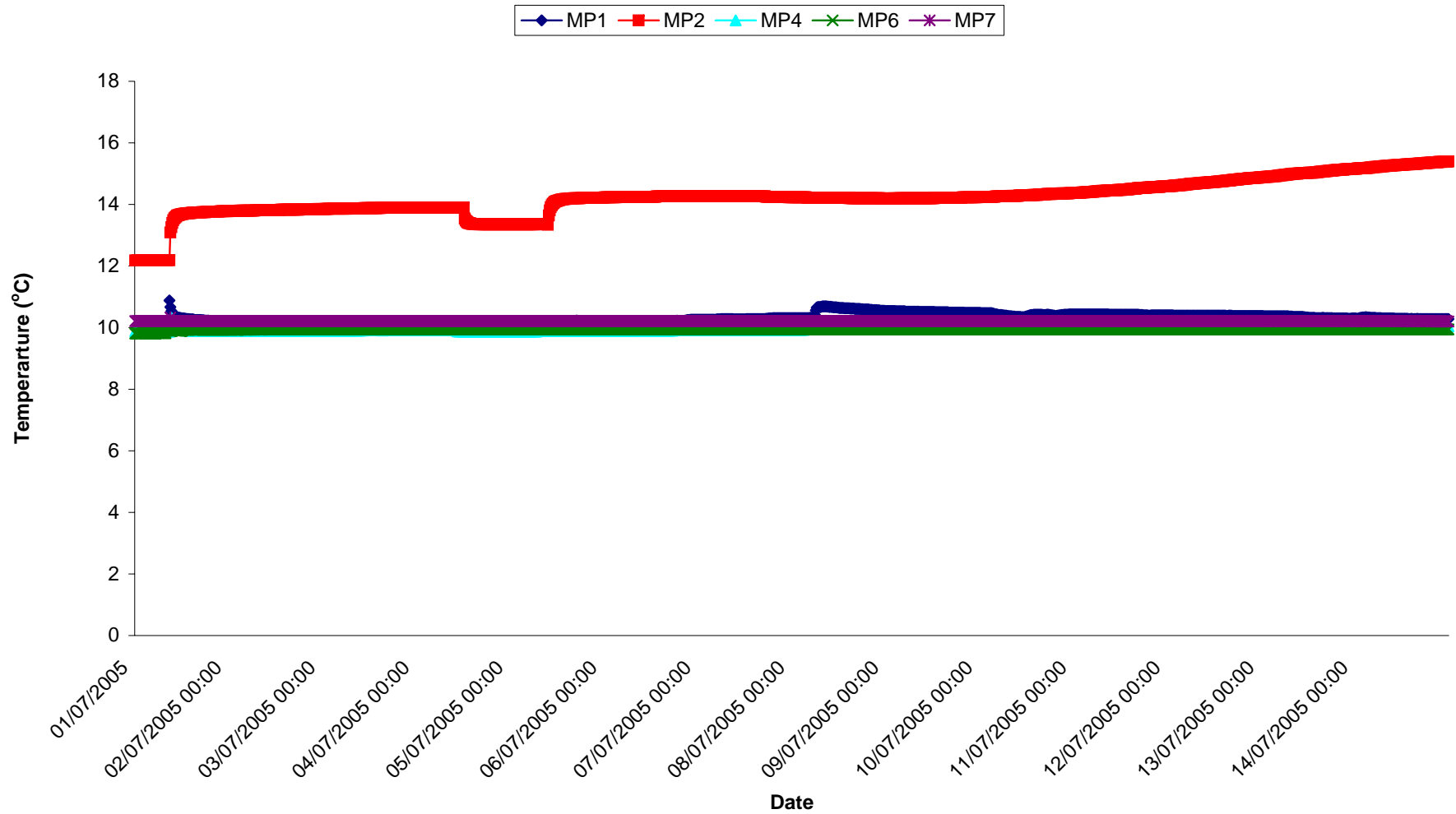
Surface Waters
pH, Weeks 27/28 2005



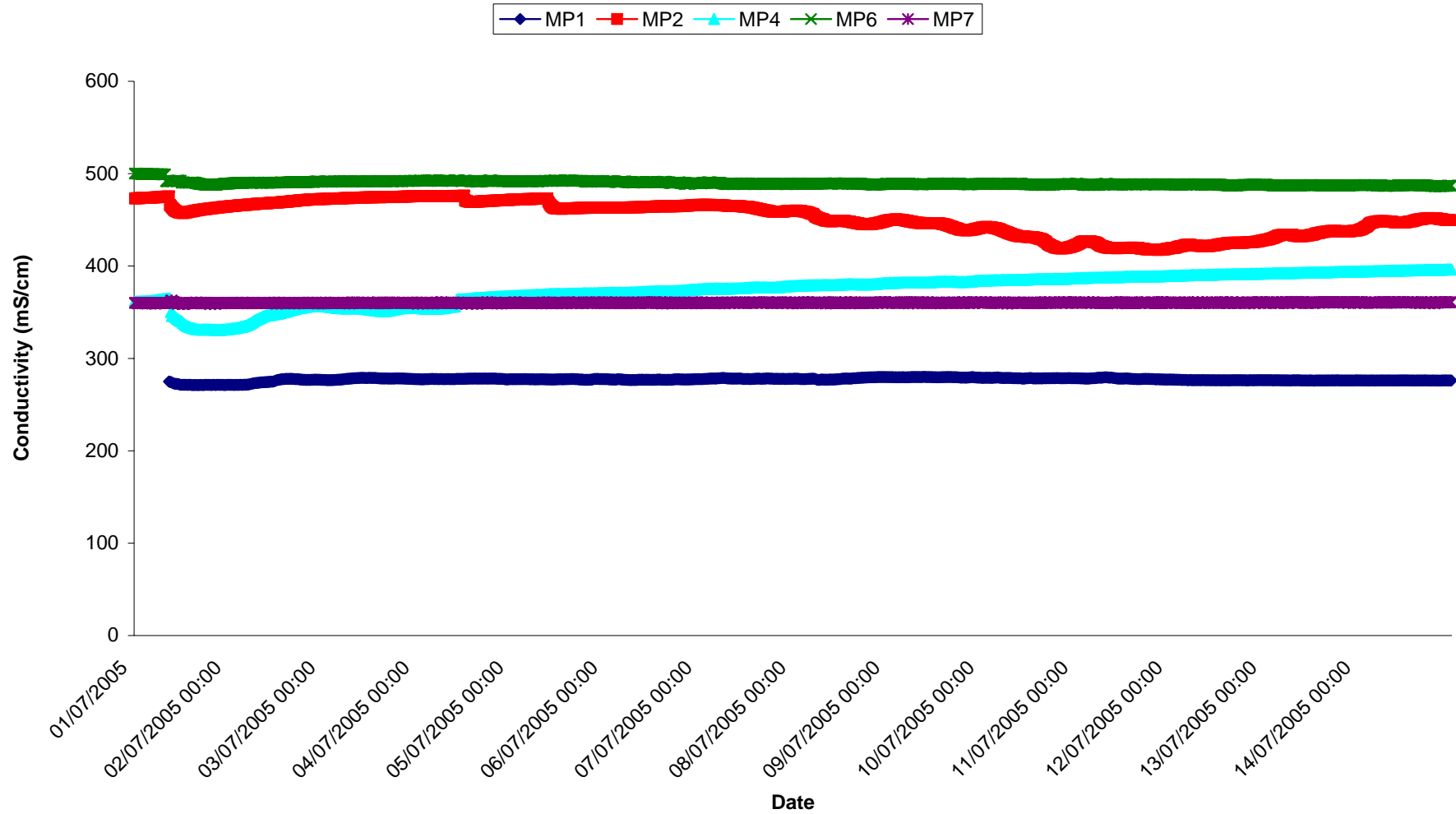
Surface Waters
Dissolved Oxygen, Weeks 27/28 2005



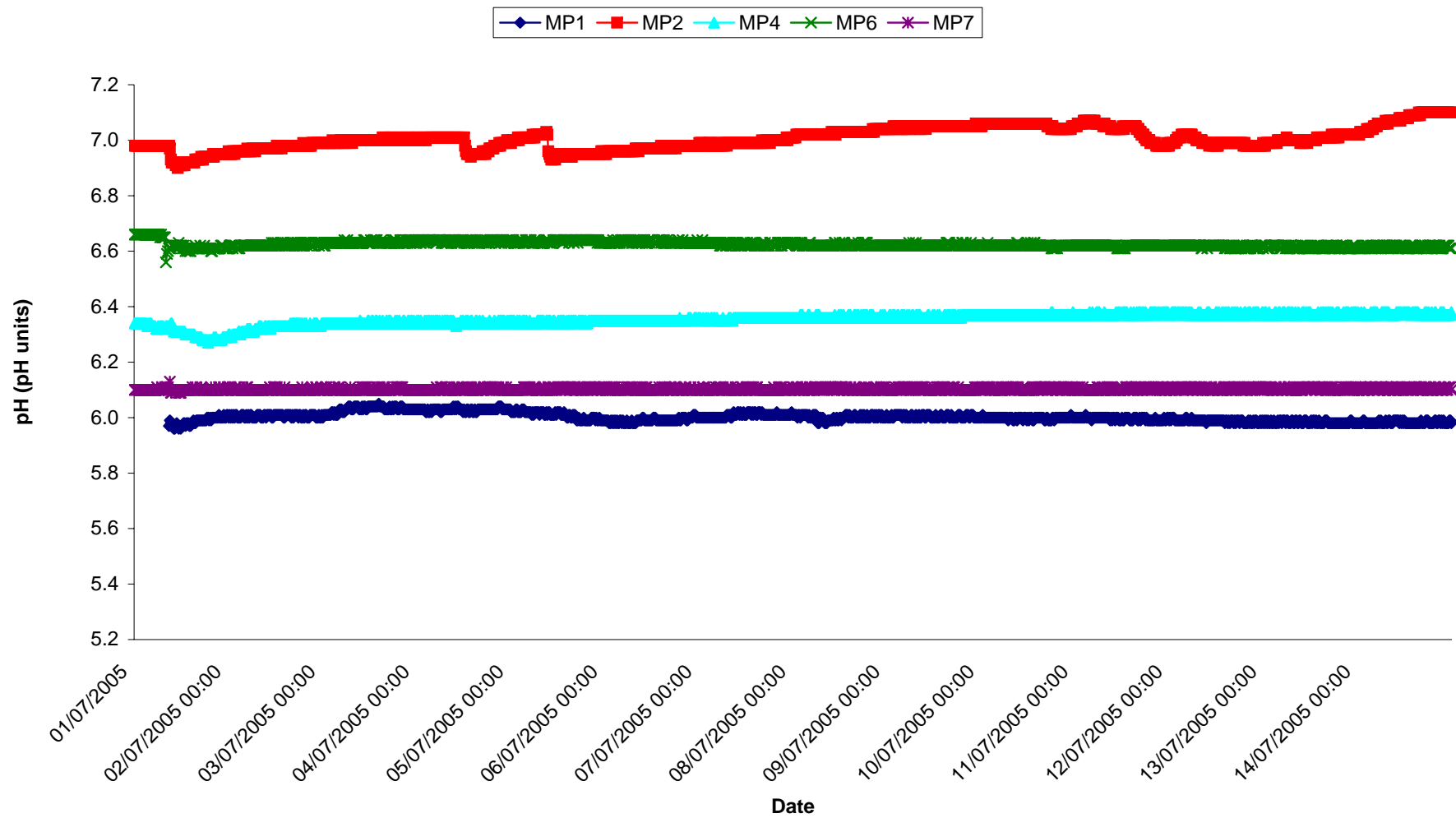
Groundwaters
Temp, Weeks 27/28 2005



Groundwaters
Conductivity, Weeks 27/28 2005



**Groundwaters
pH, Weeks 27/28 2005**



	D12/SP1	D16/SP2	D22	D62	DS1
15/03/2005	0.151	0.188			
23/03/2005	0.194	0.136			
30/03/2005	0.137	0.269	0.007		0.011
31/03/2005	0.313	0.134	0.009		0.013
01/04/2005	0.133	0.086	0.017		0.017
04/04/2005	0.252	0.139	0.087		0.014
06/04/2005	0.064	0.033			0.005
11/04/2005	0.051	0.005	0.005	0.011	0.005
18/04/2005	0.261	0.081	0.085	0.005	0.01
25/04/2005	0.005	0.005			
03/05/2005	0.016	0.006			

[illegible]

Total Suspended Solids Monitoring Record Sheet			of ...
Conducted by		Approved by	
Name	Signed	Name	

Date	TSS	Action Limit	Target Limit	
01/07/05	6	25	35	01/07/2005 00:00
	6	25	35	01/07/2005 00:15
	6	25	35	01/07/2005 00:30
	6	25	35	01/07/2005 00:45
	6	25	35	01/07/2005 01:00
	6	25	35	01/07/2005 01:15
	6	25	35	01/07/2005 01:30
	6	25	35	01/07/2005 01:45
	6	25	35	01/07/2005 02:00
	6	25	35	01/07/2005 02:15
	6	25	35	01/07/2005 02:30
	6	25	35	01/07/2005 02:45
	6	25	35	01/07/2005 03:00
	7	25	35	01/07/2005 03:15
	6	25	35	01/07/2005 03:30
	6	25	35	01/07/2005 03:45
	6	25	35	01/07/2005 04:00
	6	25	35	01/07/2005 04:15
	6	25	35	01/07/2005 04:30
	6	25	35	01/07/2005 04:45
	6	25	35	01/07/2005 05:00
	6	25	35	01/07/2005 05:15
	6	25	35	01/07/2005 05:30
	6	25	35	01/07/2005 05:45
	5	25	35	01/07/2005 06:00
	5	25	35	01/07/2005 06:15
	5	25	35	01/07/2005 06:30
	5	25	35	01/07/2005 06:45
	5	25	35	01/07/2005 07:00
	5	25	35	01/07/2005 07:15
	5	25	35	01/07/2005 07:30
	5	25	35	01/07/2005 07:45
	5	25	35	01/07/2005 08:00

5	25	35	01/07/2005 08:15
6	25	35	01/07/2005 08:30
5	25	35	01/07/2005 08:45
5	25	35	01/07/2005 09:00
5	25	35	01/07/2005 09:15
5	25	35	01/07/2005 09:30
5	25	35	01/07/2005 09:45
4	25	35	01/07/2005 10:00
4	25	35	01/07/2005 10:15
4	25	35	01/07/2005 10:30
4	25	35	01/07/2005 10:45
4	25	35	01/07/2005 11:00
4	25	35	01/07/2005 11:15
4	25	35	01/07/2005 11:30
4	25	35	01/07/2005 11:45
4	25	35	01/07/2005 12:00
4	25	35	01/07/2005 12:15
4	25	35	01/07/2005 12:30
5	25	35	01/07/2005 12:45
8	25	35	01/07/2005 13:00
7	25	35	01/07/2005 13:15
7	25	35	01/07/2005 13:30
6	25	35	01/07/2005 13:45
6	25	35	01/07/2005 14:00
6	25	35	01/07/2005 14:15
6	25	35	01/07/2005 14:30
5	25	35	01/07/2005 14:45
5	25	35	01/07/2005 15:00
5	25	35	01/07/2005 15:15
5	25	35	01/07/2005 15:30
5	25	35	01/07/2005 15:45
6	25	35	01/07/2005 16:00
4	25	35	01/07/2005 16:15
5	25	35	01/07/2005 16:30
5	25	35	01/07/2005 16:45
5	25	35	01/07/2005 17:00
5	25	35	01/07/2005 17:15
5	25	35	01/07/2005 17:30

	5	25	35	01/07/2005 17:45
	5	25	35	01/07/2005 18:00
	5	25	35	01/07/2005 18:15
	5	25	35	01/07/2005 18:30
	5	25	35	01/07/2005 18:45
	5	25	35	01/07/2005 19:00
	5	25	35	01/07/2005 19:15
	4	25	35	01/07/2005 19:30
	4	25	35	01/07/2005 19:45
	5	25	35	01/07/2005 20:00
	5	25	35	01/07/2005 20:15
	4	25	35	01/07/2005 20:30
	4	25	35	01/07/2005 20:45
	5	25	35	01/07/2005 21:00
	5	25	35	01/07/2005 21:15
	5	25	35	01/07/2005 21:30
	5	25	35	01/07/2005 21:45
	4	25	35	01/07/2005 22:00
	4	25	35	01/07/2005 22:15
	4	25	35	01/07/2005 22:30
	4	25	35	01/07/2005 22:45
	4	25	35	01/07/2005 23:00
	4	25	35	01/07/2005 23:15
	4	25	35	01/07/2005 23:30
	4	25	35	01/07/2005 23:45
02/07/05	4	25	35	02/07/2005 00:00
	4	25	35	02/07/2005 00:15
	4	25	35	02/07/2005 00:30
	4	25	35	02/07/2005 00:45
	4	25	35	02/07/2005 01:00
	4	25	35	02/07/2005 01:15
	4	25	35	02/07/2005 01:30
	4	25	35	02/07/2005 01:45
	4	25	35	02/07/2005 02:00
	4	25	35	02/07/2005 02:15
	4	25	35	02/07/2005 02:30
	3	25	35	02/07/2005 02:45
	3	25	35	02/07/2005 03:00

3	25	35	02/07/2005 03:15
3	25	35	02/07/2005 03:30
4	25	35	02/07/2005 03:45
4	25	35	02/07/2005 04:00
4	25	35	02/07/2005 04:15
4	25	35	02/07/2005 04:30
4	25	35	02/07/2005 04:45
4	25	35	02/07/2005 05:00
3	25	35	02/07/2005 05:15
4	25	35	02/07/2005 05:30
3	25	35	02/07/2005 05:45
3	25	35	02/07/2005 06:00
3	25	35	02/07/2005 06:15
3	25	35	02/07/2005 06:30
4	25	35	02/07/2005 06:45
4	25	35	02/07/2005 07:00
4	25	35	02/07/2005 07:15
3	25	35	02/07/2005 07:30
3	25	35	02/07/2005 07:45
3	25	35	02/07/2005 08:00
4	25	35	02/07/2005 08:15
4	25	35	02/07/2005 08:30
4	25	35	02/07/2005 08:45
4	25	35	02/07/2005 09:00
4	25	35	02/07/2005 09:15
3	25	35	02/07/2005 09:30
3	25	35	02/07/2005 09:45
3	25	35	02/07/2005 10:00
3	25	35	02/07/2005 10:15
3	25	35	02/07/2005 10:30
3	25	35	02/07/2005 10:45
3	25	35	02/07/2005 11:00
4	25	35	02/07/2005 11:15
4	25	35	02/07/2005 11:30
4	25	35	02/07/2005 11:45
4	25	35	02/07/2005 12:00
3	25	35	02/07/2005 12:15
4	25	35	02/07/2005 12:30

4	25	35	02/07/2005 12:45
4	25	35	02/07/2005 13:00
4	25	35	02/07/2005 13:15
4	25	35	02/07/2005 13:30
4	25	35	02/07/2005 13:45
4	25	35	02/07/2005 14:00
4	25	35	02/07/2005 14:15
3	25	35	02/07/2005 14:30
3	25	35	02/07/2005 14:45
3	25	35	02/07/2005 15:00
3	25	35	02/07/2005 15:15
3	25	35	02/07/2005 15:30
3	25	35	02/07/2005 15:45
3	25	35	02/07/2005 16:00
3	25	35	02/07/2005 16:15
3	25	35	02/07/2005 16:30
4	25	35	02/07/2005 16:45
3	25	35	02/07/2005 17:00
4	25	35	02/07/2005 17:15
4	25	35	02/07/2005 17:30
4	25	35	02/07/2005 17:45
3	25	35	02/07/2005 18:00
4	25	35	02/07/2005 18:15
4	25	35	02/07/2005 18:30
4	25	35	02/07/2005 18:45
4	25	35	02/07/2005 19:00
3	25	35	02/07/2005 19:15
3	25	35	02/07/2005 19:30
3	25	35	02/07/2005 19:45
3	25	35	02/07/2005 20:00
3	25	35	02/07/2005 20:15
3	25	35	02/07/2005 20:30
3	25	35	02/07/2005 20:45
3	25	35	02/07/2005 21:00
4	25	35	02/07/2005 21:15
3	25	35	02/07/2005 21:30
3	25	35	02/07/2005 21:45
3	25	35	02/07/2005 22:00

03/07/05	3	25	35	02/07/2005 22:15
	4	25	35	02/07/2005 22:30
	4	25	35	02/07/2005 22:45
	3	25	35	02/07/2005 23:00
	2	25	35	02/07/2005 23:15
	3	25	35	02/07/2005 23:30
	3	25	35	02/07/2005 23:45
	3	25	35	03/07/2005 00:00
	3	25	35	03/07/2005 00:15
	3	25	35	03/07/2005 00:30
	4	25	35	03/07/2005 00:45
	3	25	35	03/07/2005 01:00
	3	25	35	03/07/2005 01:15
	3	25	35	03/07/2005 01:30
	3	25	35	03/07/2005 01:45
	3	25	35	03/07/2005 02:00
	3	25	35	03/07/2005 02:15
	3	25	35	03/07/2005 02:30
	3	25	35	03/07/2005 02:45
	2	25	35	03/07/2005 03:00
	3	25	35	03/07/2005 03:15
	3	25	35	03/07/2005 03:30
	3	25	35	03/07/2005 03:45
	3	25	35	03/07/2005 04:00
	2	25	35	03/07/2005 04:15
	2	25	35	03/07/2005 04:30
	3	25	35	03/07/2005 04:45
	3	25	35	03/07/2005 05:00
	3	25	35	03/07/2005 05:15
	3	25	35	03/07/2005 05:30
	3	25	35	03/07/2005 05:45
	3	25	35	03/07/2005 06:00
3	25	35	03/07/2005 06:15	
3	25	35	03/07/2005 06:30	
3	25	35	03/07/2005 06:45	
3	25	35	03/07/2005 07:00	
3	25	35	03/07/2005 07:15	
3	25	35	03/07/2005 07:30	

3	25	35	03/07/2005 07:45
3	25	35	03/07/2005 08:00
3	25	35	03/07/2005 08:15
3	25	35	03/07/2005 08:30
3	25	35	03/07/2005 08:45
3	25	35	03/07/2005 09:00
3	25	35	03/07/2005 09:15
2	25	35	03/07/2005 09:30
3	25	35	03/07/2005 09:45
3	25	35	03/07/2005 10:00
3	25	35	03/07/2005 10:15
3	25	35	03/07/2005 10:30
3	25	35	03/07/2005 10:45
3	25	35	03/07/2005 11:00
3	25	35	03/07/2005 11:15
3	25	35	03/07/2005 11:30
3	25	35	03/07/2005 11:45
2	25	35	03/07/2005 12:00
2	25	35	03/07/2005 12:15
3	25	35	03/07/2005 12:30
3	25	35	03/07/2005 12:45
3	25	35	03/07/2005 13:00
3	25	35	03/07/2005 13:15
2	25	35	03/07/2005 13:30
3	25	35	03/07/2005 13:45
2	25	35	03/07/2005 14:00
3	25	35	03/07/2005 14:15
2	25	35	03/07/2005 14:30
2	25	35	03/07/2005 14:45
3	25	35	03/07/2005 15:00
3	25	35	03/07/2005 15:15
3	25	35	03/07/2005 15:30
3	25	35	03/07/2005 15:45
3	25	35	03/07/2005 16:00
2	25	35	03/07/2005 16:15
3	25	35	03/07/2005 16:30
3	25	35	03/07/2005 16:45
2	25	35	03/07/2005 17:00

	3	25	35	03/07/2005 17:15
	3	25	35	03/07/2005 17:30
	3	25	35	03/07/2005 17:45
	2	25	35	03/07/2005 18:00
	3	25	35	03/07/2005 18:15
	2	25	35	03/07/2005 18:30
	2	25	35	03/07/2005 18:45
	3	25	35	03/07/2005 19:00
	3	25	35	03/07/2005 19:15
	3	25	35	03/07/2005 19:30
	2	25	35	03/07/2005 19:45
	2	25	35	03/07/2005 20:00
	2	25	35	03/07/2005 20:15
	2	25	35	03/07/2005 20:30
	2	25	35	03/07/2005 20:45
	2	25	35	03/07/2005 21:00
	3	25	35	03/07/2005 21:15
	2	25	35	03/07/2005 21:30
	2	25	35	03/07/2005 21:45
	2	25	35	03/07/2005 22:00
	2	25	35	03/07/2005 22:15
	1	25	35	03/07/2005 22:30
	2	25	35	03/07/2005 22:45
	2	25	35	03/07/2005 23:00
	2	25	35	03/07/2005 23:15
	2	25	35	03/07/2005 23:30
	2	25	35	03/07/2005 23:45
04/07/05	2	25	35	04/07/2005 00:00
	2	25	35	04/07/2005 00:15
	2	25	35	04/07/2005 00:30
	2	25	35	04/07/2005 00:45
	2	25	35	04/07/2005 01:00
	2	25	35	04/07/2005 01:15
	2	25	35	04/07/2005 01:30
	3	25	35	04/07/2005 01:45
	2	25	35	04/07/2005 02:00
	2	25	35	04/07/2005 02:15
	2	25	35	04/07/2005 02:30

2	25	35	04/07/2005 02:45
2	25	35	04/07/2005 03:00
3	25	35	04/07/2005 03:15
3	25	35	04/07/2005 03:30
2	25	35	04/07/2005 03:45
2	25	35	04/07/2005 04:00
2	25	35	04/07/2005 04:15
3	25	35	04/07/2005 04:30
2	25	35	04/07/2005 04:45
2	25	35	04/07/2005 05:00
2	25	35	04/07/2005 05:15
2	25	35	04/07/2005 05:30
3	25	35	04/07/2005 05:45
2	25	35	04/07/2005 06:00
2	25	35	04/07/2005 06:15
3	25	35	04/07/2005 06:30
3	25	35	04/07/2005 06:45
3	25	35	04/07/2005 07:00
2	25	35	04/07/2005 07:15
2	25	35	04/07/2005 07:30
2	25	35	04/07/2005 07:45
2	25	35	04/07/2005 08:00
2	25	35	04/07/2005 08:15
2	25	35	04/07/2005 08:30
2	25	35	04/07/2005 08:45
2	25	35	04/07/2005 09:00
2	25	35	04/07/2005 09:15
3	25	35	04/07/2005 09:30
2	25	35	04/07/2005 09:45
2	25	35	04/07/2005 10:00
2	25	35	04/07/2005 10:15
2	25	35	04/07/2005 10:30
2	25	35	04/07/2005 10:45
3	25	35	04/07/2005 11:00
3	25	35	04/07/2005 11:15
2	25	35	04/07/2005 11:30
3	25	35	04/07/2005 11:45
2	25	35	04/07/2005 12:00

2	25	35	04/07/2005 12:15
3	25	35	04/07/2005 12:30
6	25	35	04/07/2005 12:45
4	25	35	04/07/2005 13:00
5	25	35	04/07/2005 13:15
5	25	35	04/07/2005 13:30
3	25	35	04/07/2005 13:45
4	25	35	04/07/2005 14:00
3	25	35	04/07/2005 14:15
3	25	35	04/07/2005 14:30
3	25	35	04/07/2005 14:45
3	25	35	04/07/2005 15:00
3	25	35	04/07/2005 15:15
2	25	35	04/07/2005 15:30
2	25	35	04/07/2005 15:45
3	25	35	04/07/2005 16:00
3	25	35	04/07/2005 16:15
3	25	35	04/07/2005 16:30
3	25	35	04/07/2005 16:45
3	25	35	04/07/2005 17:00
3	25	35	04/07/2005 17:15
3	25	35	04/07/2005 17:30
2	25	35	04/07/2005 17:45
2	25	35	04/07/2005 18:00
3	25	35	04/07/2005 18:15
2	25	35	04/07/2005 18:30
3	25	35	04/07/2005 18:45
2	25	35	04/07/2005 19:00
2	25	35	04/07/2005 19:15
2	25	35	04/07/2005 19:30
3	25	35	04/07/2005 19:45
2	25	35	04/07/2005 20:00
2	25	35	04/07/2005 20:15
2	25	35	04/07/2005 20:30
2	25	35	04/07/2005 20:45
2	25	35	04/07/2005 21:00
2	25	35	04/07/2005 21:15
2	25	35	04/07/2005 21:30

	2	25	35	04/07/2005 21:45
	2	25	35	04/07/2005 22:00
	2	25	35	04/07/2005 22:15
	2	25	35	04/07/2005 22:30
	2	25	35	04/07/2005 22:45
	2	25	35	04/07/2005 23:00
	2	25	35	04/07/2005 23:15
	2	25	35	04/07/2005 23:30
	2	25	35	04/07/2005 23:45
05/07/05	2	25	35	05/07/2005 00:00
	1	25	35	05/07/2005 00:15
	2	25	35	05/07/2005 00:30
	0	25	35	05/07/2005 00:45
	1	25	35	05/07/2005 01:00
	1	25	35	05/07/2005 01:15
	2	25	35	05/07/2005 01:30
	2	25	35	05/07/2005 01:45
	2	25	35	05/07/2005 02:00
	2	25	35	05/07/2005 02:15
	2	25	35	05/07/2005 02:30
	2	25	35	05/07/2005 02:45
	2	25	35	05/07/2005 03:00
	1	25	35	05/07/2005 03:15
	1	25	35	05/07/2005 03:30
	2	25	35	05/07/2005 03:45
	2	25	35	05/07/2005 04:00
	2	25	35	05/07/2005 04:15
	2	25	35	05/07/2005 04:30
	2	25	35	05/07/2005 04:45
	1	25	35	05/07/2005 05:00
	2	25	35	05/07/2005 05:15
	2	25	35	05/07/2005 05:30
	2	25	35	05/07/2005 05:45
	2	25	35	05/07/2005 06:00
	2	25	35	05/07/2005 06:15
	3	25	35	05/07/2005 06:30
	3	25	35	05/07/2005 06:45
	4	25	35	05/07/2005 07:00

7	25	35	05/07/2005 07:15
9	25	35	05/07/2005 07:30
9	25	35	05/07/2005 07:45
6	25	35	05/07/2005 08:00
6	25	35	05/07/2005 08:15
5	25	35	05/07/2005 08:30
4	25	35	05/07/2005 08:45
4	25	35	05/07/2005 09:00
4	25	35	05/07/2005 09:15
9	25	35	05/07/2005 09:30
4	25	35	05/07/2005 09:45
4	25	35	05/07/2005 10:00
4	25	35	05/07/2005 10:15
18	25	35	05/07/2005 10:30
59	25	35	05/07/2005 10:45
6	25	35	05/07/2005 11:00
17	25	35	05/07/2005 11:15
5	25	35	05/07/2005 11:30
7	25	35	05/07/2005 11:45
3	25	35	05/07/2005 12:00
3	25	35	05/07/2005 12:15
3	25	35	05/07/2005 12:30
3	25	35	05/07/2005 12:45
3	25	35	05/07/2005 13:00
3	25	35	05/07/2005 13:15
3	25	35	05/07/2005 13:30
3	25	35	05/07/2005 13:45
3	25	35	05/07/2005 14:00
3	25	35	05/07/2005 14:15
3	25	35	05/07/2005 14:30
3	25	35	05/07/2005 14:45
3	25	35	05/07/2005 15:00
3	25	35	05/07/2005 15:15
3	25	35	05/07/2005 15:30
3	25	35	05/07/2005 15:45
3	25	35	05/07/2005 16:00
3	25	35	05/07/2005 16:15
3	25	35	05/07/2005 16:30

	3	25	35	05/07/2005 16:45
	3	25	35	05/07/2005 17:00
	3	25	35	05/07/2005 17:15
	3	25	35	05/07/2005 17:30
	3	25	35	05/07/2005 17:45
	3	25	35	05/07/2005 18:00
	3	25	35	05/07/2005 18:15
	3	25	35	05/07/2005 18:30
	3	25	35	05/07/2005 18:45
	2	25	35	05/07/2005 19:00
	3	25	35	05/07/2005 19:15
	3	25	35	05/07/2005 19:30
	3	25	35	05/07/2005 19:45
	3	25	35	05/07/2005 20:00
	3	25	35	05/07/2005 20:15
	3	25	35	05/07/2005 20:30
	3	25	35	05/07/2005 20:45
	3	25	35	05/07/2005 21:00
	3	25	35	05/07/2005 21:15
	3	25	35	05/07/2005 21:30
	3	25	35	05/07/2005 21:45
	3	25	35	05/07/2005 22:00
	3	25	35	05/07/2005 22:15
	2	25	35	05/07/2005 22:30
	2	25	35	05/07/2005 22:45
	2	25	35	05/07/2005 23:00
	3	25	35	05/07/2005 23:15
	2	25	35	05/07/2005 23:30
	2	25	35	05/07/2005 23:45
06/07/05	3	25	35	06/07/2005 00:00
	2	25	35	06/07/2005 00:15
	2	25	35	06/07/2005 00:30
	2	25	35	06/07/2005 00:45
	2	25	35	06/07/2005 01:00
	2	25	35	06/07/2005 01:15
	3	25	35	06/07/2005 01:30
	3	25	35	06/07/2005 01:45
	2	25	35	06/07/2005 02:00

2	25	35	06/07/2005 02:15
2	25	35	06/07/2005 02:30
2	25	35	06/07/2005 02:45
2	25	35	06/07/2005 03:00
2	25	35	06/07/2005 03:15
2	25	35	06/07/2005 03:30
2	25	35	06/07/2005 03:45
2	25	35	06/07/2005 04:00
2	25	35	06/07/2005 04:15
2	25	35	06/07/2005 04:30
2	25	35	06/07/2005 04:45
2	25	35	06/07/2005 05:00
2	25	35	06/07/2005 05:15
2	25	35	06/07/2005 05:30
3	25	35	06/07/2005 05:45
2	25	35	06/07/2005 06:00
2	25	35	06/07/2005 06:15
2	25	35	06/07/2005 06:30
2	25	35	06/07/2005 06:45
2	25	35	06/07/2005 07:00
2	25	35	06/07/2005 07:15
2	25	35	06/07/2005 07:30
2	25	35	06/07/2005 07:45
2	25	35	06/07/2005 08:00
2	25	35	06/07/2005 08:15
2	25	35	06/07/2005 08:30
2	25	35	06/07/2005 08:45
3	25	35	06/07/2005 09:00
3	25	35	06/07/2005 09:15
3	25	35	06/07/2005 09:30
3	25	35	06/07/2005 09:45
3	25	35	06/07/2005 10:00
2	25	35	06/07/2005 10:15
2	25	35	06/07/2005 10:30
3	25	35	06/07/2005 10:45
4	25	35	06/07/2005 11:00
3	25	35	06/07/2005 11:15
3	25	35	06/07/2005 11:30

3	25	35	06/07/2005 11:45
3	25	35	06/07/2005 12:00
3	25	35	06/07/2005 12:15
3	25	35	06/07/2005 12:30
4	25	35	06/07/2005 12:45
3	25	35	06/07/2005 13:00
3	25	35	06/07/2005 13:15
3	25	35	06/07/2005 13:30
3	25	35	06/07/2005 13:45
3	25	35	06/07/2005 14:00
3	25	35	06/07/2005 14:15
3	25	35	06/07/2005 14:30
3	25	35	06/07/2005 14:45
3	25	35	06/07/2005 15:00
3	25	35	06/07/2005 15:15
3	25	35	06/07/2005 15:30
3	25	35	06/07/2005 15:45
3	25	35	06/07/2005 16:00
3	25	35	06/07/2005 16:15
3	25	35	06/07/2005 16:30
3	25	35	06/07/2005 16:45
3	25	35	06/07/2005 17:00
3	25	35	06/07/2005 17:15
3	25	35	06/07/2005 17:30
2	25	35	06/07/2005 17:45
3	25	35	06/07/2005 18:00
3	25	35	06/07/2005 18:15
2	25	35	06/07/2005 18:30
2	25	35	06/07/2005 18:45
3	25	35	06/07/2005 19:00
2	25	35	06/07/2005 19:15
2	25	35	06/07/2005 19:30
3	25	35	06/07/2005 19:45
2	25	35	06/07/2005 20:00
2	25	35	06/07/2005 20:15
2	25	35	06/07/2005 20:30
2	25	35	06/07/2005 20:45
2	25	35	06/07/2005 21:00

	2	25	35	06/07/2005 21:15
	2	25	35	06/07/2005 21:30
	2	25	35	06/07/2005 21:45
	2	25	35	06/07/2005 22:00
	2	25	35	06/07/2005 22:15
	2	25	35	06/07/2005 22:30
	2	25	35	06/07/2005 22:45
	2	25	35	06/07/2005 23:00
	2	25	35	06/07/2005 23:15
	2	25	35	06/07/2005 23:30
	2	25	35	06/07/2005 23:45
07/07/05	2	25	35	07/07/2005 00:00
	2	25	35	07/07/2005 00:15
	2	25	35	07/07/2005 00:30
	2	25	35	07/07/2005 00:45
	2	25	35	07/07/2005 01:00
	2	25	35	07/07/2005 01:15
	2	25	35	07/07/2005 01:30
	2	25	35	07/07/2005 01:45
	2	25	35	07/07/2005 02:00
	2	25	35	07/07/2005 02:15
	2	25	35	07/07/2005 02:30
	2	25	35	07/07/2005 02:45
	2	25	35	07/07/2005 03:00
	2	25	35	07/07/2005 03:15
	2	25	35	07/07/2005 03:30
	2	25	35	07/07/2005 03:45
	2	25	35	07/07/2005 04:00
	2	25	35	07/07/2005 04:15
	2	25	35	07/07/2005 04:30
	4	25	35	07/07/2005 04:45
	2	25	35	07/07/2005 05:00
	2	25	35	07/07/2005 05:15
	2	25	35	07/07/2005 05:30
	2	25	35	07/07/2005 05:45
	2	25	35	07/07/2005 06:00
	2	25	35	07/07/2005 06:15
	2	25	35	07/07/2005 06:30

2	25	35	07/07/2005 06:45
2	25	35	07/07/2005 07:00
2	25	35	07/07/2005 07:15
2	25	35	07/07/2005 07:30
2	25	35	07/07/2005 07:45
2	25	35	07/07/2005 08:00
2	25	35	07/07/2005 08:15
2	25	35	07/07/2005 08:30
2	25	35	07/07/2005 08:45
2	25	35	07/07/2005 09:00
2	25	35	07/07/2005 09:15
1	25	35	07/07/2005 09:30
2	25	35	07/07/2005 09:45
2	25	35	07/07/2005 10:00
2	25	35	07/07/2005 10:15
3	25	35	07/07/2005 10:30
3	25	35	07/07/2005 10:45
3	25	35	07/07/2005 11:00
3	25	35	07/07/2005 11:15
2	25	35	07/07/2005 11:30
2	25	35	07/07/2005 11:45
3	25	35	07/07/2005 12:00
2	25	35	07/07/2005 12:15
2	25	35	07/07/2005 12:30
2	25	35	07/07/2005 12:45
2	25	35	07/07/2005 13:00
3	25	35	07/07/2005 13:15
3	25	35	07/07/2005 13:30
3	25	35	07/07/2005 13:45
3	25	35	07/07/2005 14:00
3	25	35	07/07/2005 14:15
2	25	35	07/07/2005 14:30
2	25	35	07/07/2005 14:45
3	25	35	07/07/2005 15:00
3	25	35	07/07/2005 15:15
3	25	35	07/07/2005 15:30
3	25	35	07/07/2005 15:45
3	25	35	07/07/2005 16:00

	2	25	35	07/07/2005 16:15
	2	25	35	07/07/2005 16:30
	2	25	35	07/07/2005 16:45
	3	25	35	07/07/2005 17:00
	2	25	35	07/07/2005 17:15
	2	25	35	07/07/2005 17:30
	2	25	35	07/07/2005 17:45
	1	25	35	07/07/2005 18:00
	2	25	35	07/07/2005 18:15
	2	25	35	07/07/2005 18:30
	2	25	35	07/07/2005 18:45
	2	25	35	07/07/2005 19:00
	2	25	35	07/07/2005 19:15
	2	25	35	07/07/2005 19:30
	2	25	35	07/07/2005 19:45
	2	25	35	07/07/2005 20:00
	2	25	35	07/07/2005 20:15
	2	25	35	07/07/2005 20:30
	2	25	35	07/07/2005 20:45
	2	25	35	07/07/2005 21:00
	2	25	35	07/07/2005 21:15
	2	25	35	07/07/2005 21:30
	2	25	35	07/07/2005 21:45
	2	25	35	07/07/2005 22:00
	2	25	35	07/07/2005 22:15
	2	25	35	07/07/2005 22:30
	2	25	35	07/07/2005 22:45
	1	25	35	07/07/2005 23:00
	2	25	35	07/07/2005 23:15
	2	25	35	07/07/2005 23:30
	2	25	35	07/07/2005 23:45
08/07/05	2	25	35	08/07/2005 00:00
	2	25	35	08/07/2005 00:15
	2	25	35	08/07/2005 00:30
	2	25	35	08/07/2005 00:45
	2	25	35	08/07/2005 01:00
	2	25	35	08/07/2005 01:15
	2	25	35	08/07/2005 01:30

2	25	35	08/07/2005 01:45
2	25	35	08/07/2005 02:00
1	25	35	08/07/2005 02:15
1	25	35	08/07/2005 02:30
1	25	35	08/07/2005 02:45
1	25	35	08/07/2005 03:00
1	25	35	08/07/2005 03:15
1	25	35	08/07/2005 03:30
2	25	35	08/07/2005 03:45
2	25	35	08/07/2005 04:00
2	25	35	08/07/2005 04:15
2	25	35	08/07/2005 04:30
2	25	35	08/07/2005 04:45
2	25	35	08/07/2005 05:00
2	25	35	08/07/2005 05:15
4	25	35	08/07/2005 05:30
6	25	35	08/07/2005 05:45
5	25	35	08/07/2005 06:00
4	25	35	08/07/2005 06:15
10	25	35	08/07/2005 06:30
11	25	35	08/07/2005 06:45
8	25	35	08/07/2005 07:00
3	25	35	08/07/2005 07:15
3	25	35	08/07/2005 07:30
3	25	35	08/07/2005 07:45
2	25	35	08/07/2005 08:00
2	25	35	08/07/2005 08:15
4	25	35	08/07/2005 08:30
4	25	35	08/07/2005 08:45
2	25	35	08/07/2005 09:00
2	25	35	08/07/2005 09:15
2	25	35	08/07/2005 09:30
2	25	35	08/07/2005 09:45
2	25	35	08/07/2005 10:00
2	25	35	08/07/2005 10:15
2	25	35	08/07/2005 10:30
2	25	35	08/07/2005 10:45
2	25	35	08/07/2005 11:00

2	25	35	08/07/2005 11:15
2	25	35	08/07/2005 11:30
2	25	35	08/07/2005 11:45
2	25	35	08/07/2005 12:00
2	25	35	08/07/2005 12:15
1	25	35	08/07/2005 12:30
2	25	35	08/07/2005 12:45
2	25	35	08/07/2005 13:00
2	25	35	08/07/2005 13:15
1	25	35	08/07/2005 13:30
1	25	35	08/07/2005 13:45
2	25	35	08/07/2005 14:00
2	25	35	08/07/2005 14:15
2	25	35	08/07/2005 14:30
2	25	35	08/07/2005 14:45
2	25	35	08/07/2005 15:00
2	25	35	08/07/2005 15:15
2	25	35	08/07/2005 15:30
2	25	35	08/07/2005 15:45
2	25	35	08/07/2005 16:00
2	25	35	08/07/2005 16:15
2	25	35	08/07/2005 16:30
2	25	35	08/07/2005 16:45
2	25	35	08/07/2005 17:00
2	25	35	08/07/2005 17:15
2	25	35	08/07/2005 17:30
1	25	35	08/07/2005 17:45
2	25	35	08/07/2005 18:00
1	25	35	08/07/2005 18:15
2	25	35	08/07/2005 18:30
2	25	35	08/07/2005 18:45
2	25	35	08/07/2005 19:00
2	25	35	08/07/2005 19:15
1	25	35	08/07/2005 19:30
2	25	35	08/07/2005 19:45
1	25	35	08/07/2005 20:00
2	25	35	08/07/2005 20:15
2	25	35	08/07/2005 20:30

	2	25	35	08/07/2005 20:45
	2	25	35	08/07/2005 21:00
	2	25	35	08/07/2005 21:15
	2	25	35	08/07/2005 21:30
	2	25	35	08/07/2005 21:45
	2	25	35	08/07/2005 22:00
	1	25	35	08/07/2005 22:15
	2	25	35	08/07/2005 22:30
	2	25	35	08/07/2005 22:45
	2	25	35	08/07/2005 23:00
	1	25	35	08/07/2005 23:15
	1	25	35	08/07/2005 23:30
	1	25	35	08/07/2005 23:45
09/07/05	1	25	35	09/07/2005 00:00
	1	25	35	09/07/2005 00:15
	1	25	35	09/07/2005 00:30
	1	25	35	09/07/2005 00:45
	2	25	35	09/07/2005 01:00
	2	25	35	09/07/2005 01:15
	2	25	35	09/07/2005 01:30
	1	25	35	09/07/2005 01:45
	1	25	35	09/07/2005 02:00
	2	25	35	09/07/2005 02:15
	2	25	35	09/07/2005 02:30
	2	25	35	09/07/2005 02:45
	2	25	35	09/07/2005 03:00
	1	25	35	09/07/2005 03:15
	2	25	35	09/07/2005 03:30
	2	25	35	09/07/2005 03:45
	2	25	35	09/07/2005 04:00
	1	25	35	09/07/2005 04:15
	1	25	35	09/07/2005 04:30
	1	25	35	09/07/2005 04:45
	1	25	35	09/07/2005 05:00
	1	25	35	09/07/2005 05:15
	1	25	35	09/07/2005 05:30
	1	25	35	09/07/2005 05:45
	1	25	35	09/07/2005 06:00

0	25	35	09/07/2005 06:15
0	25	35	09/07/2005 06:30
0	25	35	09/07/2005 06:45
1	25	35	09/07/2005 07:00
1	25	35	09/07/2005 07:15
2	25	35	09/07/2005 07:30
2	25	35	09/07/2005 07:45
2	25	35	09/07/2005 08:00
2	25	35	09/07/2005 08:15
2	25	35	09/07/2005 08:30
2	25	35	09/07/2005 08:45
2	25	35	09/07/2005 09:00
1	25	35	09/07/2005 09:15
2	25	35	09/07/2005 09:30
2	25	35	09/07/2005 09:45
2	25	35	09/07/2005 10:00
2	25	35	09/07/2005 10:15
2	25	35	09/07/2005 10:30
2	25	35	09/07/2005 10:45
2	25	35	09/07/2005 11:00
2	25	35	09/07/2005 11:15
2	25	35	09/07/2005 11:30
2	25	35	09/07/2005 11:45
2	25	35	09/07/2005 12:00
2	25	35	09/07/2005 12:15
2	25	35	09/07/2005 12:30
2	25	35	09/07/2005 12:45
2	25	35	09/07/2005 13:00
2	25	35	09/07/2005 13:15
2	25	35	09/07/2005 13:30
2	25	35	09/07/2005 13:45
2	25	35	09/07/2005 14:00
2	25	35	09/07/2005 14:15
2	25	35	09/07/2005 14:30
2	25	35	09/07/2005 14:45
2	25	35	09/07/2005 15:00
2	25	35	09/07/2005 15:15
2	25	35	09/07/2005 15:30

	2	25	35	09/07/2005 15:45
	2	25	35	09/07/2005 16:00
	2	25	35	09/07/2005 16:15
	2	25	35	09/07/2005 16:30
	2	25	35	09/07/2005 16:45
	2	25	35	09/07/2005 17:00
	2	25	35	09/07/2005 17:15
	1	25	35	09/07/2005 17:30
	2	25	35	09/07/2005 17:45
	2	25	35	09/07/2005 18:00
	1	25	35	09/07/2005 18:15
	2	25	35	09/07/2005 18:30
	1	25	35	09/07/2005 18:45
	2	25	35	09/07/2005 19:00
	1	25	35	09/07/2005 19:15
	1	25	35	09/07/2005 19:30
	1	25	35	09/07/2005 19:45
	2	25	35	09/07/2005 20:00
	1	25	35	09/07/2005 20:15
	1	25	35	09/07/2005 20:30
	1	25	35	09/07/2005 20:45
	2	25	35	09/07/2005 21:00
	1	25	35	09/07/2005 21:15
	1	25	35	09/07/2005 21:30
	3	25	35	09/07/2005 21:45
	1	25	35	09/07/2005 22:00
	3	25	35	09/07/2005 22:15
	2	25	35	09/07/2005 22:30
	1	25	35	09/07/2005 22:45
	1	25	35	09/07/2005 23:00
	1	25	35	09/07/2005 23:15
	1	25	35	09/07/2005 23:30
	1	25	35	09/07/2005 23:45
10/07/05	1	25	35	10/07/2005 00:00
	1	25	35	10/07/2005 00:15
	1	25	35	10/07/2005 00:30
	1	25	35	10/07/2005 00:45
	1	25	35	10/07/2005 01:00

1	25	35	10/07/2005 01:15
1	25	35	10/07/2005 01:30
1	25	35	10/07/2005 01:45
1	25	35	10/07/2005 02:00
1	25	35	10/07/2005 02:15
1	25	35	10/07/2005 02:30
1	25	35	10/07/2005 02:45
1	25	35	10/07/2005 03:00
1	25	35	10/07/2005 03:15
1	25	35	10/07/2005 03:30
1	25	35	10/07/2005 03:45
1	25	35	10/07/2005 04:00
1	25	35	10/07/2005 04:15
1	25	35	10/07/2005 04:30
1	25	35	10/07/2005 04:45
1	25	35	10/07/2005 05:00
1	25	35	10/07/2005 05:15
1	25	35	10/07/2005 05:30
0	25	35	10/07/2005 05:45
1	25	35	10/07/2005 06:00
1	25	35	10/07/2005 06:15
1	25	35	10/07/2005 06:30
1	25	35	10/07/2005 06:45
1	25	35	10/07/2005 07:00
1	25	35	10/07/2005 07:15
1	25	35	10/07/2005 07:30
1	25	35	10/07/2005 07:45
1	25	35	10/07/2005 08:00
2	25	35	10/07/2005 08:15
1	25	35	10/07/2005 08:30
2	25	35	10/07/2005 08:45
2	25	35	10/07/2005 09:00
1	25	35	10/07/2005 09:15
2	25	35	10/07/2005 09:30
1	25	35	10/07/2005 09:45
1	25	35	10/07/2005 10:00
1	25	35	10/07/2005 10:15
1	25	35	10/07/2005 10:30

2	25	35	10/07/2005 10:45
2	25	35	10/07/2005 11:00
2	25	35	10/07/2005 11:15
2	25	35	10/07/2005 11:30
2	25	35	10/07/2005 11:45
2	25	35	10/07/2005 12:00
2	25	35	10/07/2005 12:15
2	25	35	10/07/2005 12:30
2	25	35	10/07/2005 12:45
1	25	35	10/07/2005 13:00
2	25	35	10/07/2005 13:15
2	25	35	10/07/2005 13:30
2	25	35	10/07/2005 13:45
2	25	35	10/07/2005 14:00
1	25	35	10/07/2005 14:15
1	25	35	10/07/2005 14:30
1	25	35	10/07/2005 14:45
1	25	35	10/07/2005 15:00
1	25	35	10/07/2005 15:15
1	25	35	10/07/2005 15:30
1	25	35	10/07/2005 15:45
1	25	35	10/07/2005 16:00
1	25	35	10/07/2005 16:15
0	25	35	10/07/2005 16:30
1	25	35	10/07/2005 16:45
1	25	35	10/07/2005 17:00
1	25	35	10/07/2005 17:15
1	25	35	10/07/2005 17:30
1	25	35	10/07/2005 17:45
1	25	35	10/07/2005 18:00
1	25	35	10/07/2005 18:15
0	25	35	10/07/2005 18:30
1	25	35	10/07/2005 18:45
0	25	35	10/07/2005 19:00
1	25	35	10/07/2005 19:15
0	25	35	10/07/2005 19:30
1	25	35	10/07/2005 19:45
1	25	35	10/07/2005 20:00

	1	25	35	10/07/2005 20:15
	1	25	35	10/07/2005 20:30
	1	25	35	10/07/2005 20:45
	0	25	35	10/07/2005 21:00
	0	25	35	10/07/2005 21:15
	0	25	35	10/07/2005 21:30
	0	25	35	10/07/2005 21:45
	1	25	35	10/07/2005 22:00
	1	25	35	10/07/2005 22:15
	0	25	35	10/07/2005 22:30
	1	25	35	10/07/2005 22:45
	1	25	35	10/07/2005 23:00
	0	25	35	10/07/2005 23:15
	1	25	35	10/07/2005 23:30
	0	25	35	10/07/2005 23:45
11/07/05	1	25	35	11/07/2005 00:00
	1	25	35	11/07/2005 00:15
	1	25	35	11/07/2005 00:30
	0	25	35	11/07/2005 00:45
	1	25	35	11/07/2005 01:00
	1	25	35	11/07/2005 01:15
	1	25	35	11/07/2005 01:30
	1	25	35	11/07/2005 01:45
	1	25	35	11/07/2005 02:00
	1	25	35	11/07/2005 02:15
	0	25	35	11/07/2005 02:30
	0	25	35	11/07/2005 02:45
	0	25	35	11/07/2005 03:00
	0	25	35	11/07/2005 03:15
	0	25	35	11/07/2005 03:30
	0	25	35	11/07/2005 03:45
	0	25	35	11/07/2005 04:00
	1	25	35	11/07/2005 04:15
	0	25	35	11/07/2005 04:30
	0	25	35	11/07/2005 04:45
	0	25	35	11/07/2005 05:00
	0	25	35	11/07/2005 05:15
	1	25	35	11/07/2005 05:30

1	25	35	11/07/2005 05:45
0	25	35	11/07/2005 06:00
0	25	35	11/07/2005 06:15
0	25	35	11/07/2005 06:30
0	25	35	11/07/2005 06:45
0	25	35	11/07/2005 07:00
0	25	35	11/07/2005 07:15
0	25	35	11/07/2005 07:30
0	25	35	11/07/2005 07:45
0	25	35	11/07/2005 08:00
1	25	35	11/07/2005 08:15
1	25	35	11/07/2005 08:30
1	25	35	11/07/2005 08:45
1	25	35	11/07/2005 09:00
1	25	35	11/07/2005 09:15
1	25	35	11/07/2005 09:30
1	25	35	11/07/2005 09:45
1	25	35	11/07/2005 10:00
1	25	35	11/07/2005 10:15
1	25	35	11/07/2005 10:30
1	25	35	11/07/2005 10:45
1	25	35	11/07/2005 11:00
1	25	35	11/07/2005 11:15
1	25	35	11/07/2005 11:30
1	25	35	11/07/2005 11:45
0	25	35	11/07/2005 12:00
1	25	35	11/07/2005 12:15
1	25	35	11/07/2005 12:30
2	25	35	11/07/2005 12:45
1	25	35	11/07/2005 13:00
1	25	35	11/07/2005 13:15
1	25	35	11/07/2005 13:30
1	25	35	11/07/2005 13:45
1	25	35	11/07/2005 14:00
1	25	35	11/07/2005 14:15
1	25	35	11/07/2005 14:30
1	25	35	11/07/2005 14:45
1	25	35	11/07/2005 15:00

	1	25	35	11/07/2005 15:15
	1	25	35	11/07/2005 15:30
	0	25	35	11/07/2005 15:45
	1	25	35	11/07/2005 16:00
	1	25	35	11/07/2005 16:15
	1	25	35	11/07/2005 16:30
	0	25	35	11/07/2005 16:45
	0	25	35	11/07/2005 17:00
	0	25	35	11/07/2005 17:15
	0	25	35	11/07/2005 17:30
	1	25	35	11/07/2005 17:45
	0	25	35	11/07/2005 18:00
	0	25	35	11/07/2005 18:15
	0	25	35	11/07/2005 18:30
	0	25	35	11/07/2005 18:45
	0	25	35	11/07/2005 19:00
	0	25	35	11/07/2005 19:15
	0	25	35	11/07/2005 19:30
	0	25	35	11/07/2005 19:45
	0	25	35	11/07/2005 20:00
	0	25	35	11/07/2005 20:15
	0	25	35	11/07/2005 20:30
	0	25	35	11/07/2005 20:45
	0	25	35	11/07/2005 21:00
	0	25	35	11/07/2005 21:15
	0	25	35	11/07/2005 21:30
	0	25	35	11/07/2005 21:45
	0	25	35	11/07/2005 22:00
	0	25	35	11/07/2005 22:15
	0	25	35	11/07/2005 22:30
	0	25	35	11/07/2005 22:45
	0	25	35	11/07/2005 23:00
	0	25	35	11/07/2005 23:15
	0	25	35	11/07/2005 23:30
	0	25	35	11/07/2005 23:45
12/07/05	0	25	35	12/07/2005 00:00
	0	25	35	12/07/2005 00:15
	0	25	35	12/07/2005 00:30

0	25	35	12/07/2005 00:45
0	25	35	12/07/2005 01:00
0	25	35	12/07/2005 01:15
0	25	35	12/07/2005 01:30
0	25	35	12/07/2005 01:45
0	25	35	12/07/2005 02:00
0	25	35	12/07/2005 02:15
0	25	35	12/07/2005 02:30
0	25	35	12/07/2005 02:45
0	25	35	12/07/2005 03:00
0	25	35	12/07/2005 03:15
0	25	35	12/07/2005 03:30
0	25	35	12/07/2005 03:45
0	25	35	12/07/2005 04:00
0	25	35	12/07/2005 04:15
0	25	35	12/07/2005 04:30
0	25	35	12/07/2005 04:45
0	25	35	12/07/2005 05:00
0	25	35	12/07/2005 05:15
0	25	35	12/07/2005 05:30
0	25	35	12/07/2005 05:45
0	25	35	12/07/2005 06:00
0	25	35	12/07/2005 06:15
0	25	35	12/07/2005 06:30
0	25	35	12/07/2005 06:45
0	25	35	12/07/2005 07:00
0	25	35	12/07/2005 07:15
0	25	35	12/07/2005 07:30
0	25	35	12/07/2005 07:45
0	25	35	12/07/2005 08:00
0	25	35	12/07/2005 08:15
0	25	35	12/07/2005 08:30
0	25	35	12/07/2005 08:45
0	25	35	12/07/2005 09:00
0	25	35	12/07/2005 09:15
0	25	35	12/07/2005 09:30
0	25	35	12/07/2005 09:45
0	25	35	12/07/2005 10:00

0	25	35	12/07/2005 10:15
0	25	35	12/07/2005 10:30
0	25	35	12/07/2005 10:45
0	25	35	12/07/2005 11:00
0	25	35	12/07/2005 11:15
0	25	35	12/07/2005 11:30
0	25	35	12/07/2005 11:45
0	25	35	12/07/2005 12:00
0	25	35	12/07/2005 12:15
0	25	35	12/07/2005 12:30
0	25	35	12/07/2005 12:45
0	25	35	12/07/2005 13:00
0	25	35	12/07/2005 13:15
0	25	35	12/07/2005 13:30
0	25	35	12/07/2005 13:45
0	25	35	12/07/2005 14:00
0	25	35	12/07/2005 14:15
0	25	35	12/07/2005 14:30
0	25	35	12/07/2005 14:45
0	25	35	12/07/2005 15:00
0	25	35	12/07/2005 15:15
0	25	35	12/07/2005 15:30
0	25	35	12/07/2005 15:45
0	25	35	12/07/2005 16:00
0	25	35	12/07/2005 16:15
0	25	35	12/07/2005 16:30
0	25	35	12/07/2005 16:45
0	25	35	12/07/2005 17:00
0	25	35	12/07/2005 17:15
0	25	35	12/07/2005 17:30
0	25	35	12/07/2005 17:45
0	25	35	12/07/2005 18:00
0	25	35	12/07/2005 18:15
0	25	35	12/07/2005 18:30
0	25	35	12/07/2005 18:45
0	25	35	12/07/2005 19:00
0	25	35	12/07/2005 19:15
0	25	35	12/07/2005 19:30

	0	25	35	12/07/2005 19:45
	0	25	35	12/07/2005 20:00
	0	25	35	12/07/2005 20:15
	0	25	35	12/07/2005 20:30
	0	25	35	12/07/2005 20:45
	0	25	35	12/07/2005 21:00
	0	25	35	12/07/2005 21:15
	0	25	35	12/07/2005 21:30
	0	25	35	12/07/2005 21:45
	0	25	35	12/07/2005 22:00
	0	25	35	12/07/2005 22:15
	0	25	35	12/07/2005 22:30
	0	25	35	12/07/2005 22:45
	0	25	35	12/07/2005 23:00
	0	25	35	12/07/2005 23:15
	0	25	35	12/07/2005 23:30
	0	25	35	12/07/2005 23:45
13/07/05	0	25	35	13/07/2005 00:00
	0	25	35	13/07/2005 00:15
	0	25	35	13/07/2005 00:30
	0	25	35	13/07/2005 00:45
	0	25	35	13/07/2005 01:00
	0	25	35	13/07/2005 01:15
	0	25	35	13/07/2005 01:30
	0	25	35	13/07/2005 01:45
	0	25	35	13/07/2005 02:00
	0	25	35	13/07/2005 02:15
	0	25	35	13/07/2005 02:30
	0	25	35	13/07/2005 02:45
	0	25	35	13/07/2005 03:00
	0	25	35	13/07/2005 03:15
	0	25	35	13/07/2005 03:30
	0	25	35	13/07/2005 03:45
	0	25	35	13/07/2005 04:00
	0	25	35	13/07/2005 04:15
	0	25	35	13/07/2005 04:30
	0	25	35	13/07/2005 04:45
	0	25	35	13/07/2005 05:00

0	25	35	13/07/2005 05:15
0	25	35	13/07/2005 05:30
0	25	35	13/07/2005 05:45
0	25	35	13/07/2005 06:00
0	25	35	13/07/2005 06:15
0	25	35	13/07/2005 06:30
0	25	35	13/07/2005 06:45
0	25	35	13/07/2005 07:00
0	25	35	13/07/2005 07:15
0	25	35	13/07/2005 07:30
0	25	35	13/07/2005 07:45
0	25	35	13/07/2005 08:00
0	25	35	13/07/2005 08:15
0	25	35	13/07/2005 08:30
0	25	35	13/07/2005 08:45
0	25	35	13/07/2005 09:00
0	25	35	13/07/2005 09:15
0	25	35	13/07/2005 09:30
0	25	35	13/07/2005 09:45
0	25	35	13/07/2005 10:00
0	25	35	13/07/2005 10:15
0	25	35	13/07/2005 10:30
0	25	35	13/07/2005 10:45
0	25	35	13/07/2005 11:00
0	25	35	13/07/2005 11:15
0	25	35	13/07/2005 11:30
0	25	35	13/07/2005 11:45
0	25	35	13/07/2005 12:00
0	25	35	13/07/2005 12:15
0	25	35	13/07/2005 12:30
0	25	35	13/07/2005 12:45
0	25	35	13/07/2005 13:00
0	25	35	13/07/2005 13:15
0	25	35	13/07/2005 13:30
0	25	35	13/07/2005 13:45
0	25	35	13/07/2005 14:00
0	25	35	13/07/2005 14:15
0	25	35	13/07/2005 14:30

	0	25	35	13/07/2005 14:45
	0	25	35	13/07/2005 15:00
	0	25	35	13/07/2005 15:15
	0	25	35	13/07/2005 15:30
	0	25	35	13/07/2005 15:45
	0	25	35	13/07/2005 16:00
	0	25	35	13/07/2005 16:15
	0	25	35	13/07/2005 16:30
	0	25	35	13/07/2005 16:45
	0	25	35	13/07/2005 17:00
	0	25	35	13/07/2005 17:15
	0	25	35	13/07/2005 17:30
	0	25	35	13/07/2005 17:45
	0	25	35	13/07/2005 18:00
	0	25	35	13/07/2005 18:15
	0	25	35	13/07/2005 18:30
	0	25	35	13/07/2005 18:45
	0	25	35	13/07/2005 19:00
	0	25	35	13/07/2005 19:15
	0	25	35	13/07/2005 19:30
	0	25	35	13/07/2005 19:45
	0	25	35	13/07/2005 20:00
	0	25	35	13/07/2005 20:15
	0	25	35	13/07/2005 20:30
	0	25	35	13/07/2005 20:45
	0	25	35	13/07/2005 21:00
	0	25	35	13/07/2005 21:15
	0	25	35	13/07/2005 21:30
	0	25	35	13/07/2005 21:45
	0	25	35	13/07/2005 22:00
	0	25	35	13/07/2005 22:15
	0	25	35	13/07/2005 22:30
	0	25	35	13/07/2005 22:45
	0	25	35	13/07/2005 23:00
	0	25	35	13/07/2005 23:15
	0	25	35	13/07/2005 23:30
	0	25	35	13/07/2005 23:45
14/07/05	0	25	35	14/07/2005 00:00

0	25	35	14/07/2005 00:15
0	25	35	14/07/2005 00:30
0	25	35	14/07/2005 00:45
0	25	35	14/07/2005 01:00
0	25	35	14/07/2005 01:15
0	25	35	14/07/2005 01:30
0	25	35	14/07/2005 01:45
0	25	35	14/07/2005 02:00
0	25	35	14/07/2005 02:15
0	25	35	14/07/2005 02:30
0	25	35	14/07/2005 02:45
0	25	35	14/07/2005 03:00
0	25	35	14/07/2005 03:15
0	25	35	14/07/2005 03:30
0	25	35	14/07/2005 03:45
0	25	35	14/07/2005 04:00
0	25	35	14/07/2005 04:15
0	25	35	14/07/2005 04:30
0	25	35	14/07/2005 04:45
0	25	35	14/07/2005 05:00
0	25	35	14/07/2005 05:15
0	25	35	14/07/2005 05:30
0	25	35	14/07/2005 05:45
0	25	35	14/07/2005 06:00
0	25	35	14/07/2005 06:15
0	25	35	14/07/2005 06:30
0	25	35	14/07/2005 06:45
0	25	35	14/07/2005 07:00
0	25	35	14/07/2005 07:15
0	25	35	14/07/2005 07:30
0	25	35	14/07/2005 07:45
0	25	35	14/07/2005 08:00
0	25	35	14/07/2005 08:15
0	25	35	14/07/2005 08:30
0	25	35	14/07/2005 08:45
0	25	35	14/07/2005 09:00
0	25	35	14/07/2005 09:15
0	25	35	14/07/2005 09:30

0	25	35	14/07/2005 09:45
0	25	35	14/07/2005 10:00
0	25	35	14/07/2005 10:15
0	25	35	14/07/2005 10:30
0	25	35	14/07/2005 10:45
0	25	35	14/07/2005 11:00
0	25	35	14/07/2005 11:15
0	25	35	14/07/2005 11:30
0	25	35	14/07/2005 11:45
0	25	35	14/07/2005 12:00
0	25	35	14/07/2005 12:15
0	25	35	14/07/2005 12:30
0	25	35	14/07/2005 12:45
0	25	35	14/07/2005 13:00
0	25	35	14/07/2005 13:15
0	25	35	14/07/2005 13:30
0	25	35	14/07/2005 13:45
0	25	35	14/07/2005 14:00
0	25	35	14/07/2005 14:15
0	25	35	14/07/2005 14:30
0	25	35	14/07/2005 14:45
0	25	35	14/07/2005 15:00
0	25	35	14/07/2005 15:15
0	25	35	14/07/2005 15:30
0	25	35	14/07/2005 15:45
0	25	35	14/07/2005 16:00
0	25	35	14/07/2005 16:15
0	25	35	14/07/2005 16:30
0	25	35	14/07/2005 16:45
0	25	35	14/07/2005 17:00
0	25	35	14/07/2005 17:15
0	25	35	14/07/2005 17:30
0	25	35	14/07/2005 17:45
0	25	35	14/07/2005 18:00
0	25	35	14/07/2005 18:15
0	25	35	14/07/2005 18:30
0	25	35	14/07/2005 18:45
0	25	35	14/07/2005 19:00

[illegible]

Phosphate Monitoring Record Sheet				no...	of ...
Conducted by			Approved by		
Name	Signed		Name	Signed	

Date	Time	Results	Start O.D	Final O.D	Action Limit	Target Limit
01/07/2005	Fri Jul 01 00:29:02 2005	5.2	0.0754	0.015	40	70
	Fri Jul 01 01:28:24 2005	3.39	0.0749	0.0111	40	70
	Fri Jul 01 02:27:46 2005	3.64	0.0711	0.0116	40	70
	Fri Jul 01 03:27:08 2005	3.05	0.0709	0.0103	40	70
	Fri Jul 01 04:26:29 2005	2.97	0.0696	0.0102	40	70
	Fri Jul 01 05:25:51 2005	4.52	0.0672	0.0135	40	70
	Fri Jul 01 06:25:14 2005	5.43	0.0671	0.0155	40	70
	Fri Jul 01 07:24:35 2005	6.88	0.0665	0.0186	40	70
	Fri Jul 01 08:23:57 2005	9.05	0.0664	0.0234	40	70
	Fri Jul 01 09:23:27 2005	11.6	0.0674	0.0289	40	70
	Fri Jul 01 10:22:48 2005	15.8	0.0655	0.038	40	70
	Fri Jul 01 11:22:10 2005	15.9	0.0653	0.0381	40	70
	Fri Jul 01 12:21:32 2005	13.8	0.0675	0.0337	40	70
	Fri Jul 01 13:20:53 2005	16.7	0.0675	0.0399	40	70
	Fri Jul 01 14:20:15 2005	20.5	0.0721	0.0483	40	70
	Fri Jul 01 15:19:36 2005	20.7	0.0724	0.0486	40	70
	Fri Jul 01 16:18:58 2005	19.3	0.0719	0.0456	40	70
	Fri Jul 01 17:18:19 2005	18.9	0.0704	0.0448	40	70
	Fri Jul 01 18:17:42 2005	21	0.0673	0.0493	40	70
	Fri Jul 01 19:17:04 2005	20.5	0.0684	0.0483	40	70
	Fri Jul 01 20:16:25 2005	18.6	0.0714	0.0441	40	70
	Fri Jul 01 21:15:47 2005	16.6	0.0728	0.0397	40	70
	Fri Jul 01 22:15:09 2005	14.8	0.0735	0.0358	40	70
	Fri Jul 01 23:14:31 2005	13.2	0.0727	0.0325	40	70
02/07/2005	Sat Jul 02 00:13:53 2005	12.7	0.0708	0.0313	40	70
	Sat Jul 02 01:13:15 2005	12.2	0.0704	0.0302	40	70
	Sat Jul 02 02:12:36 2005	11.5	0.0697	0.0288	40	70
	Sat Jul 02 03:11:58 2005	11	0.07	0.0276	40	70
	Sat Jul 02 04:11:21 2005	10.9	0.0696	0.0273	40	70
	Sat Jul 02 05:10:43 2005	11.2	0.0691	0.0281	40	70
	Sat Jul 02 06:10:04 2005	11.5	0.0686	0.0287	40	70

Calibration	Sat Jul 02 07:09:26 2005	12.2	0.0685	0.0303	40	70
	Sat Jul 02 08:08:47 2005	13.5	0.0682	0.033	40	70
	Sat Jul 02 09:08:17 2005	14	0.0689	0.0341	40	70
	Sat Jul 02 10:07:39 2005	14.5	0.0701	0.0351	40	70
	Sat Jul 02 11:07:00 2005	15.2	0.0694	0.0368	40	70
	Sat Jul 02 12:06:22 2005	15.6	0.0694	0.0375	40	70
	Sat Jul 02 13:05:43 2005	20.3	0.0666	0.0478	40	70
	Sat Jul 02 14:05:05 2005	20.2	0.0679	0.0477	40	70
	Sat Jul 02 15:04:26 2005	16.5	0.0763	0.0396	40	70
	SYSTEM CALIBRATION	0.983	0.0596	1.09	40	70
	Sat Jul 02 16:11:17 2005	18.2	0.0762	0.0433	40	70
	Sat Jul 02 17:10:08 2005	17.6	0.0709	0.042	40	70
	Sat Jul 02 18:09:30 2005	19.8	0.0677	0.0466	40	70
	Sat Jul 02 19:08:52 2005	18.6	0.0708	0.0442	40	70
	Sat Jul 02 20:08:15 2005	11.8	0.0835	0.0292	40	70
	Sat Jul 02 21:07:36 2005	11.7	0.0774	0.0291	40	70
	Sat Jul 02 22:06:58 2005	8.46	0.0803	0.0221	40	70
	Sat Jul 02 23:06:19 2005	6.86	0.0768	0.0186	40	70
	03/07/2005 Sun Jul 03 00:05:41 2005	5.23	0.0747	0.0151	40	70
	Sun Jul 03 01:05:03 2005	5.64	0.0716	0.016	40	70
	Sun Jul 03 02:04:24 2005	4.26	0.0727	0.013	40	70
	Sun Jul 03 03:03:46 2005	4.62	0.0704	0.0137	40	70
	Sun Jul 03 04:03:07 2005	4.42	0.0703	0.0133	40	70
	Sun Jul 03 05:02:29 2005	3.99	0.0706	0.0124	40	70
	Sun Jul 03 06:01:52 2005	3.51	0.0713	0.0113	40	70
	Sun Jul 03 07:01:13 2005	3.95	0.0708	0.0123	40	70
	Sun Jul 03 08:00:35 2005	5.64	0.0694	0.016	40	70
	Sun Jul 03 08:59:56 2005	6	0.0705	0.0167	40	70
	Sun Jul 03 09:59:17 2005	9.12	0.0686	0.0235	40	70
	Sun Jul 03 10:58:39 2005	12.8	0.0677	0.0314	40	70
	Sun Jul 03 11:58:02 2005	15.4	0.0672	0.0372	40	70
	Sun Jul 03 12:57:24 2005	17.1	0.0667	0.0409	40	70
	Sun Jul 03 13:56:46 2005	18.2	0.0657	0.0433	40	70
	Sun Jul 03 14:56:07 2005	15.1	0.0735	0.0366	40	70
	Sun Jul 03 15:55:29 2005	18.5	0.0651	0.0439	40	70
	Sun Jul 03 16:54:51 2005	15.6	0.0726	0.0375	40	70
	Sun Jul 03 17:54:13 2005	18.3	0.0658	0.0434	40	70

	Sun Jul 03 18:53:35 2005	15.9	0.0692	0.0383	40	70
	Sun Jul 03 19:52:56 2005	10.7	0.0796	0.027	40	70
	Sun Jul 03 20:52:18 2005	10.6	0.0743	0.0267	40	70
	Sun Jul 03 21:51:40 2005	4.43	0.0813	0.0133	40	70
	Sun Jul 03 22:51:02 2005	3.49	0.0755	0.0113	40	70
	Sun Jul 03 23:50:23 2005	2.91	0.0727	0.01	40	70
04/07/2005	Mon Jul 04 00:49:45 2005	1.31	0.0729	0.00655	40	70
	Mon Jul 04 01:49:06 2005	0.869	0.0719	0.00559	40	70
	Mon Jul 04 02:48:29 2005	0.362	0.0535	0.00449	40	70
	Mon Jul 04 03:47:50 2005	3.71	0.0405	0.0118	40	70
	Mon Jul 04 04:47:12 2005	0.178	0.0549	0.00409	40	70
	Mon Jul 04 05:46:33 2005	1.11	0.0688	0.0061	40	70
	Mon Jul 04 06:45:55 2005	2.06	0.0674	0.00817	40	70
	Mon Jul 04 07:45:17 2005	3.44	0.067	0.0112	40	70
	Mon Jul 04 09:47:41 2005	8.11	0.0673	0.0213	40	70
	Mon Jul 04 10:47:02 2005	13.3	0.0661	0.0326	40	70
	Mon Jul 04 11:46:24 2005	12	0.0721	0.0298	40	70
	Mon Jul 04 12:45:45 2005	16.5	0.0679	0.0396	40	70
	Mon Jul 04 13:45:07 2005	18.2	0.0667	0.0432	40	70
	Mon Jul 04 14:44:29 2005	18.7	0.0663	0.0443	40	70
	Mon Jul 04 15:43:50 2005	18.9	0.0642	0.0447	40	70
	Mon Jul 04 16:43:12 2005	19.3	0.0658	0.0457	40	70
	Mon Jul 04 17:42:33 2005	18.6	0.0668	0.0441	40	70
	Mon Jul 04 18:41:56 2005	17.5	0.0674	0.0417	40	70
	Mon Jul 04 19:41:17 2005	13.4	0.0757	0.0328	40	70
	Mon Jul 04 20:40:39 2005	9.81	0.0811	0.025	40	70
	Mon Jul 04 21:40:01 2005	8.04	0.0784	0.0212	40	70
	Mon Jul 04 22:39:23 2005	6.27	0.0765	0.0173	40	70
	Mon Jul 04 23:38:45 2005	5.61	0.0727	0.0159	40	70
05/07/2005	Tue Jul 05 00:38:07 2005	5.03	0.0713	0.0146	40	70
	Tue Jul 05 01:37:28 2005	5.05	0.0701	0.0147	40	70
	Tue Jul 05 02:36:50 2005	4.98	0.0696	0.0145	40	70
	Tue Jul 05 03:36:11 2005	4.92	0.0701	0.0144	40	70
	Tue Jul 05 04:35:33 2005	4.33	0.0711	0.0131	40	70
	Tue Jul 05 05:34:55 2005	4.52	0.0709	0.0135	40	70
	Tue Jul 05 06:34:16 2005	4.99	0.0705	0.0146	40	70
	Tue Jul 05 07:33:38 2005	6.03	0.0715	0.0168	40	70

	Tue Jul 05 08:33:00 2005	8.95	0.0743	0.0231	40	70
	Tue Jul 05 09:32:21 2005	11.4	0.0753	0.0286	40	70
	Tue Jul 05 10:32:49 2005	13.2	0.0743	0.0324	40	70
	Tue Jul 05 11:32:10 2005	15.5	0.0731	0.0374	40	70
	Tue Jul 05 12:31:33 2005	18.4	0.0713	0.0437	40	70
	Tue Jul 05 13:30:54 2005	16.5	0.0759	0.0396	40	70
	Tue Jul 05 14:30:16 2005	16	0.076	0.0384	40	70
	Tue Jul 05 15:29:37 2005	18.1	0.072	0.043	40	70
	Tue Jul 05 16:29:00 2005	19.7	0.071	0.0464	40	70
	Tue Jul 05 17:28:22 2005	18.8	0.0735	0.0445	40	70
	Tue Jul 05 18:27:44 2005	14	0.0822	0.0341	40	70
	Tue Jul 05 19:27:05 2005	12	0.0805	0.0297	40	70
	Tue Jul 05 20:26:27 2005	10.5	0.0775	0.0266	40	70
	Tue Jul 05 21:25:49 2005	8.5	0.0773	0.0222	40	70
	Tue Jul 05 22:25:11 2005	7.31	0.0763	0.0196	40	70
	Tue Jul 05 23:24:33 2005	5.9	0.0766	0.0165	40	70
06/07/2005	Wed Jul 06 00:23:54 2005	5.77	0.0743	0.0162	40	70
	Wed Jul 06 01:23:16 2005	5.52	0.0743	0.0157	40	70
	Wed Jul 06 02:22:37 2005	5.21	0.0749	0.015	40	70
	Wed Jul 06 03:21:59 2005	5.14	0.0744	0.0149	40	70
	Wed Jul 06 04:21:20 2005	5.92	0.0732	0.0166	40	70
	Wed Jul 06 05:20:43 2005	5.72	0.0736	0.0161	40	70
	Wed Jul 06 06:20:04 2005	3.92	0.077	0.0122	40	70
	Wed Jul 06 07:19:25 2005	4.56	0.0765	0.0136	40	70
	Wed Jul 06 08:26:17 2005	10.2	0.0769	0.0258	40	70
	Wed Jul 06 09:25:08 2005	5.7	0.0778	0.0161	40	70
	Wed Jul 06 10:24:29 2005	6.46	0.076	0.0177	40	70
	Wed Jul 06 11:23:51 2005	7.46	0.0748	0.0199	40	70
	Wed Jul 06 12:23:13 2005	5.91	0.0785	0.0165	40	70
	Wed Jul 06 13:22:35 2005	6.51	0.0775	0.0178	40	70
	Wed Jul 06 14:21:57 2005	8.09	0.0763	0.0213	40	70
	Wed Jul 06 15:21:18 2005	10.9	0.0759	0.0273	40	70
	Wed Jul 06 16:20:40 2005	11	0.0772	0.0276	40	70
	Wed Jul 06 17:20:02 2005	10.9	0.0772	0.0273	40	70
	Wed Jul 06 18:19:25 2005	10.1	0.0776	0.0257	40	70
	Wed Jul 06 19:18:46 2005	9.78	0.0772	0.025	40	70
	Wed Jul 06 20:18:08 2005	8.85	0.077	0.0229	40	70

	Wed Jul 06 21:17:29 2005	8.11	0.0775	0.0213	40	70
	Wed Jul 06 22:16:51 2005	8.09	0.0768	0.0213	40	70
	Wed Jul 06 23:16:12 2005	7.88	0.0767	0.0208	40	70
07/07/2005	Thu Jul 07 00:15:34 2005	7.59	0.0771	0.0202	40	70
	Thu Jul 07 01:14:56 2005	7.85	0.0757	0.0208	40	70
	Thu Jul 07 02:14:17 2005	7.31	0.0771	0.0196	40	70
	Thu Jul 07 03:13:39 2005	7.42	0.0762	0.0198	40	70
	Thu Jul 07 04:13:01 2005	7.28	0.0761	0.0195	40	70
	Thu Jul 07 05:12:23 2005	6.75	0.0773	0.0184	40	70
	Thu Jul 07 06:11:45 2005	6.97	0.0765	0.0188	40	70
	Thu Jul 07 07:11:06 2005	7.77	0.0763	0.0206	40	70
	Thu Jul 07 08:10:28 2005	8.65	0.076	0.0225	40	70
	Thu Jul 07 09:09:50 2005	9.26	0.0759	0.0238	40	70
	Thu Jul 07 10:09:13 2005	10.5	0.0754	0.0266	40	70
	Thu Jul 07 11:08:34 2005	12.2	0.0757	0.0301	40	70
	Thu Jul 07 12:07:56 2005	13.5	0.0772	0.033	40	70
	Thu Jul 07 13:07:18 2005	17.6	0.0758	0.042	40	70
	Thu Jul 07 14:06:39 2005	17.8	0.0796	0.0424	40	70
	Thu Jul 07 15:06:01 2005	20	0.076	0.047	40	70
	Thu Jul 07 16:05:23 2005	18.8	0.078	0.0444	40	70
	Thu Jul 07 17:04:44 2005	16.5	0.0831	0.0395	40	70
	Thu Jul 07 18:04:06 2005	16	0.0806	0.0385	40	70
	Thu Jul 07 19:03:27 2005	14.8	0.0797	0.0358	40	70
	Thu Jul 07 20:02:49 2005	16	0.0748	0.0384	40	70
	Thu Jul 07 21:02:11 2005	13.9	0.077	0.0339	40	70
	Thu Jul 07 22:01:33 2005	12.1	0.0782	0.03	40	70
	Thu Jul 07 23:00:55 2005	10.6	0.0779	0.0268	40	70
08/07/2005	Fri Jul 08 00:00:16 2005	10.3	0.0767	0.026	40	70
	Fri Jul 08 00:59:38 2005	10.1	0.0759	0.0257	40	70
	Fri Jul 08 01:59:00 2005	9.63	0.0764	0.0246	40	70
	Fri Jul 08 02:58:22 2005	9.99	0.0754	0.0254	40	70
	Fri Jul 08 03:57:44 2005	9.7	0.0757	0.0248	40	70
	Fri Jul 08 04:57:05 2005	9.86	0.0756	0.0251	40	70
	Fri Jul 08 05:56:27 2005	9.81	0.0764	0.025	40	70
	Fri Jul 08 06:55:50 2005	10.7	0.0776	0.0269	40	70
Calibration	SYSTEM CALIBRATION	1.03	0.0621	1.09	40	70
	Fri Jul 08 08:02:40 2005	19.3	0.0783	0.0456	40	70

	Fri Jul 08 09:01:31 2005	15.5	0.0782	0.0374	40	70
	Fri Jul 08 10:00:53 2005	15.5	0.0779	0.0374	40	70
	Fri Jul 08 11:00:15 2005	17.1	0.0763	0.0409	40	70
	Fri Jul 08 11:59:36 2005	18.2	0.0753	0.0433	40	70
	Fri Jul 08 12:58:58 2005	20.9	0.0735	0.0491	40	70
	Fri Jul 08 13:58:19 2005	21.8	0.0737	0.051	40	70
	Fri Jul 08 14:57:41 2005	21.6	0.075	0.0507	40	70
	Fri Jul 08 15:57:02 2005	22.5	0.0737	0.0526	40	70
	Fri Jul 08 16:56:24 2005	23.7	0.0701	0.0552	40	70
	Fri Jul 08 17:55:46 2005	23.5	0.0718	0.0547	40	70
	Fri Jul 08 18:55:08 2005	22.6	0.0729	0.0529	40	70
	Fri Jul 08 19:54:30 2005	17.6	0.0821	0.042	40	70
	Fri Jul 08 20:53:51 2005	16.6	0.0781	0.0398	40	70
	Fri Jul 08 21:53:13 2005	15.1	0.0761	0.0365	40	70
	Fri Jul 08 22:52:35 2005	13.7	0.0757	0.0334	40	70
	Fri Jul 08 23:51:58 2005	11.9	0.0755	0.0296	40	70
09/07/2005	Sat Jul 09 00:51:19 2005	11.8	0.0747	0.0294	40	70
	Sat Jul 09 01:50:41 2005	11.4	0.0746	0.0285	40	70
	Sat Jul 09 02:50:02 2005	11.3	0.0745	0.0283	40	70
	Sat Jul 09 03:49:25 2005	11.5	0.075	0.0286	40	70
	Sat Jul 09 04:48:46 2005	11.5	0.0748	0.0287	40	70
	Sat Jul 09 05:48:08 2005	10.8	0.0759	0.0273	40	70
	Sat Jul 09 06:47:29 2005	10.8	0.0762	0.0271	40	70
	Sat Jul 09 07:46:51 2005	12.4	0.0745	0.0306	40	70
	Sat Jul 09 08:46:13 2005	13.6	0.074	0.0333	40	70
	Sat Jul 09 09:45:35 2005	15.5	0.0743	0.0374	40	70
	Sat Jul 09 10:44:56 2005	18.2	0.0729	0.0433	40	70
	Sat Jul 09 11:44:18 2005	20.5	0.0726	0.0483	40	70
	Sat Jul 09 12:43:39 2005	22.1	0.0715	0.0517	40	70
	Sat Jul 09 13:43:01 2005	22	0.0715	0.0514	40	70
	Sat Jul 09 14:42:23 2005	23.7	0.0688	0.0552	40	70
	Sat Jul 09 15:41:46 2005	22.4	0.0723	0.0524	40	70
	Sat Jul 09 16:41:07 2005	21.9	0.072	0.0513	40	70
	Sat Jul 09 17:40:29 2005	22.4	0.0683	0.0524	40	70
	Sat Jul 09 18:39:50 2005	22.5	0.0662	0.0525	40	70
	Sat Jul 09 19:39:13 2005	21	0.0687	0.0493	40	70
	Sat Jul 09 20:38:35 2005	18.9	0.0713	0.0447	40	70

Calibration		Sat Jul 09 21:37:57 2005	16.5	0.0731	0.0396	40	70
		Sat Jul 09 22:37:18 2005	11.9	0.0805	0.0295	40	70
		Sat Jul 09 23:36:40 2005	10.7	0.0765	0.027	40	70
	10/07/2005	Sun Jul 10 00:36:02 2005	10.3	0.0737	0.026	40	70
		Sun Jul 10 01:35:23 2005	10.3	0.0722	0.026	40	70
		Sun Jul 10 02:34:45 2005	9.45	0.0726	0.0242	40	70
		Sun Jul 10 03:34:06 2005	8.81	0.0727	0.0228	40	70
		Sun Jul 10 04:33:28 2005	8.68	0.0727	0.0226	40	70
		Sun Jul 10 05:32:50 2005	7.52	0.0752	0.02	40	70
		Sun Jul 10 06:32:12 2005	7.85	0.0736	0.0207	40	70
		SYSTEM CALIBRATION	1.02	0.0607	1.09	40	70
		Sun Jul 10 07:39:02 2005	15.1	0.0744	0.0366	40	70
		Sun Jul 10 08:37:52 2005	13.5	0.0725	0.033	40	70
		Sun Jul 10 09:37:14 2005	16.8	0.0709	0.0403	40	70
		Sun Jul 10 10:36:37 2005	19.5	0.0685	0.046	40	70
		Sun Jul 10 11:35:59 2005	20.1	0.0663	0.0474	40	70
		Sun Jul 10 12:35:20 2005	20.3	0.0626	0.0477	40	70
		Sun Jul 10 13:34:42 2005	21	0.0605	0.0493	40	70
		Sun Jul 10 14:34:04 2005	21.7	0.0617	0.0509	40	70
		Sun Jul 10 15:33:26 2005	21.5	0.0579	0.0504	40	70
		Sun Jul 10 16:32:48 2005	21.2	0.0574	0.0498	40	70
		Sun Jul 10 17:32:09 2005	21.8	0.0599	0.0512	40	70
		Sun Jul 10 18:31:31 2005	22	0.0581	0.0515	40	70
		Sun Jul 10 19:30:52 2005	21.3	0.0588	0.05	40	70
		Sun Jul 10 20:30:15 2005	19.2	0.06	0.0455	40	70
		Sun Jul 10 21:29:36 2005	12.7	0.0745	0.0312	40	70
		Sun Jul 10 22:28:58 2005	10.5	0.0764	0.0265	40	70
		Sun Jul 10 23:28:19 2005	10.3	0.0725	0.026	40	70
	11/07/2005	Mon Jul 11 00:27:41 2005	9.1	0.0711	0.0235	40	70
		Mon Jul 11 01:27:04 2005	7.89	0.0707	0.0208	40	70
		Mon Jul 11 02:26:25 2005	6.78	0.0712	0.0184	40	70
		Mon Jul 11 03:25:47 2005	5.01	0.0728	0.0146	40	70
		Mon Jul 11 04:25:08 2005	4.34	0.0721	0.0131	40	70
		Mon Jul 11 05:24:30 2005	3.82	0.0717	0.012	40	70
		Mon Jul 11 06:23:51 2005	4.04	0.0712	0.0125	40	70
		Mon Jul 11 07:23:13 2005	6.09	0.0693	0.0169	40	70
		Mon Jul 11 08:22:36 2005	7.93	0.069	0.0209	40	70

Calibration

	Mon Jul 11 09:21:58 2005	11.2	0.0671	0.028	40	70
	Mon Jul 11 10:21:20 2005	14.2	0.0641	0.0346	40	70
	Mon Jul 11 11:20:41 2005	14.2	0.0644	0.0346	40	70
	Mon Jul 11 12:21:12 2005	15.5	0.0599	0.0374	40	70
	Mon Jul 11 13:20:33 2005	15.8	0.0593	0.0379	40	70
	Mon Jul 11 14:19:55 2005	16.2	0.0583	0.0388	40	70
	Mon Jul 11 15:19:17 2005	16.9	0.0543	0.0404	40	70
	Mon Jul 11 16:18:38 2005	17.4	0.054	0.0416	40	70
	Mon Jul 11 17:18:00 2005	18.3	0.0537	0.0434	40	70
	Mon Jul 11 18:17:22 2005	19.2	0.0524	0.0455	40	70
	Mon Jul 11 19:16:44 2005	18.7	0.0547	0.0444	40	70
	Mon Jul 11 20:16:05 2005	15.7	0.059	0.0379	40	70
	Mon Jul 11 21:15:27 2005	8.33	0.078	0.0218	40	70
	Mon Jul 11 22:14:49 2005	9.02	0.0733	0.0233	40	70
	Mon Jul 11 23:14:12 2005	9.38	0.0684	0.0241	40	70
12/07/2005	Tue Jul 12 00:13:33 2005	8.5	0.0684	0.0222	40	70
	Tue Jul 12 01:12:55 2005	7.43	0.0693	0.0198	40	70
	Tue Jul 12 02:12:16 2005	6.8	0.0691	0.0185	40	70
	Tue Jul 12 03:11:37 2005	6.29	0.0692	0.0174	40	70
	Tue Jul 12 04:11:00 2005	5.37	0.0701	0.0154	40	70
	Tue Jul 12 05:10:21 2005	4.98	0.0702	0.0145	40	70
	Tue Jul 12 06:09:43 2005	4.8	0.0701	0.0141	40	70
	SYSTEM CALIBRATION	1.02	0.0612	1.09	40	70
	Tue Jul 12 07:16:33 2005	10.5	0.0707	0.0265	40	70
	Tue Jul 12 08:15:24 2005	5.81	0.0704	0.0163	40	70
	Tue Jul 12 09:14:47 2005	5.83	0.0698	0.0164	40	70
	Tue Jul 12 10:14:08 2005	6.22	0.0697	0.0172	40	70
	Tue Jul 12 11:13:29 2005	7.51	0.0681	0.02	40	70
	Tue Jul 12 12:12:51 2005	10	0.0656	0.0255	40	70
	Tue Jul 12 13:12:13 2005	10.6	0.063	0.0268	40	70
	Tue Jul 12 14:11:36 2005	9.37	0.0635	0.0241	40	70
	Tue Jul 12 15:10:57 2005	9.77	0.0601	0.0249	40	70
	Tue Jul 12 16:10:19 2005	10.4	0.0573	0.0263	40	70
	Tue Jul 12 17:09:40 2005	9.83	0.0595	0.025	40	70
	Tue Jul 12 18:09:03 2005	10.7	0.0594	0.0269	40	70
	Tue Jul 12 19:08:25 2005	9.93	0.0619	0.0253	40	70
	Tue Jul 12 20:07:46 2005	8.3	0.0657	0.0217	40	70

	Tue Jul 12 21:07:08 2005	6.67	0.0677	0.0182	40	70
	Tue Jul 12 22:06:30 2005	5.4	0.0675	0.0154	40	70
	Tue Jul 12 23:05:51 2005	4.38	0.0673	0.0132	40	70
13/07/2005	Wed Jul 13 00:05:13 2005	4.21	0.0671	0.0129	40	70
	Wed Jul 13 01:04:34 2005	3.54	0.0675	0.0114	40	70
	Wed Jul 13 02:03:56 2005	3.45	0.0672	0.0112	40	70
	Wed Jul 13 03:03:18 2005	3.01	0.0676	0.0102	40	70
	Wed Jul 13 04:02:39 2005	2.62	0.0677	0.0094	40	70
	Wed Jul 13 05:02:01 2005	2.54	0.0677	0.00921	40	70
	Wed Jul 13 06:01:23 2005	2.05	0.0683	0.00814	40	70
	Wed Jul 13 07:00:45 2005	2.31	0.0678	0.00872	40	70
	Wed Jul 13 08:00:06 2005	2.52	0.067	0.00917	40	70
	Wed Jul 13 08:59:28 2005	2.52	0.0674	0.00918	40	70
	Wed Jul 13 09:58:50 2005	3.28	0.0666	0.0108	40	70
	Wed Jul 13 10:58:13 2005	4.01	0.0649	0.0124	40	70
	Wed Jul 13 11:57:34 2005	4.49	0.0641	0.0135	40	70
	Wed Jul 13 12:56:56 2005	4.23	0.0631	0.0129	40	70
	Wed Jul 13 13:56:17 2005	4.83	0.0614	0.0142	40	70
	Wed Jul 13 14:55:39 2005	5.29	0.0588	0.0152	40	70
	Wed Jul 13 15:55:02 2005	5.96	0.0578	0.0167	40	70
	Wed Jul 13 16:54:24 2005	6.67	0.0577	0.0182	40	70
	Wed Jul 13 17:53:45 2005	6.9	0.0459	0.0187	40	70
	Wed Jul 13 18:53:06 2005	5.29	0.0303	0.0152	40	70
	Wed Jul 13 19:52:28 2005	5.19	0.0218	0.015	40	70
	Wed Jul 13 20:51:49 2005	4.63	0.0216	0.0138	40	70
	Wed Jul 13 21:51:11 2005	3.68	0.0216	0.0117	40	70
	Wed Jul 13 22:50:33 2005	3.15	0.0217	0.0105	40	70
	Wed Jul 13 23:49:55 2005	2.98	0.021	0.0102	40	70
14/07/2005	Thu Jul 14 00:49:16 2005	2.58	0.0211	0.0093	40	70
	Thu Jul 14 01:48:38 2005	2.43	0.0207	0.00898	40	70
	Thu Jul 14 02:48:00 2005	2.03	0.0215	0.0081	40	70
	Thu Jul 14 03:47:22 2005	1.89	0.0213	0.0078	40	70
	Thu Jul 14 04:46:44 2005	1.92	0.0209	0.00788	40	70
	Thu Jul 14 05:46:06 2005	1.75	0.0213	0.00751	40	70
Calibration	SYSTEM CALIBRATION	0.98	0.785	1.09	40	70
	Thu Jul 14 06:52:56 2005	3.39	0.0249	0.0111	40	70
	Thu Jul 14 07:51:48 2005	2.32	0.0229	0.00873	40	70

	Thu Jul 14 08:51:09 2005	2.11	0.022	0.00829	40	70
	Thu Jul 14 09:50:31 2005	2.05	0.0213	0.00816	40	70
	Thu Jul 14 10:49:53 2005	2.59	0.0203	0.00934	40	70
	Thu Jul 14 11:49:15 2005	2.58	0.0203	0.0093	40	70
	Thu Jul 14 12:48:37 2005	1.77	0.026	0.00754	40	70
	Thu Jul 14 13:47:58 2005	1.91	0.0229	0.00785	40	70
	Thu Jul 14 14:47:20 2005	2.3	0.0229	0.00869	40	70
	Thu Jul 14 15:46:41 2005	2.45	0.0221	0.00902	40	70
	Thu Jul 14 16:46:03 2005	1.78	0.0237	0.00756	40	70
	Thu Jul 14 17:45:24 2005	1.42	0.0237	0.00678	40	70
	Thu Jul 14 18:44:46 2005	2.06	0.0217	0.00817	40	70
	Thu Jul 14 19:44:08 2005	1.77	0.022	0.00754	40	70
	Thu Jul 14 20:43:30 2005	1.01	0.0231	0.00589	40	70
	Thu Jul 14 21:42:51 2005	1.13	0.0228	0.00615	40	70
	Thu Jul 14 22:42:13 2005	0.658	0.0241	0.00513	40	70
	Thu Jul 14 23:41:36 2005	0.419	0.0237	0.00461	40	70
Fri Jul 15 00:40:58 2005	PO4	-0.104	0.0253	0.00347		
Fri Jul 15 01:40:19 2005	PO4	0.0961	0.0233	0.00391		
Fri Jul 15 02:39:41 2005	PO4	0.615	0.0223	0.00504		
Fri Jul 15 03:39:03 2005	PO4	0.762	0.0217	0.00535		
Fri Jul 15 04:38:25 2005	PO4	0.24	0.0226	0.00422		
Fri Jul 15 05:37:47 2005	PO4	0.303	0.0222	0.00436		
Fri Jul 15 06:37:09 2005	PO4	0.526	0.0221	0.00484		
Fri Jul 15 07:36:30 2005	PO4	0.571	0.0218	0.00494		
Fri Jul 15 08:35:52 2005	PO4	0.288	0.0227	0.00432		
Fri Jul 15 09:35:14 2005	PO4	1.47	0.0212	0.00688		

Surface Water Monitoring Record Sheet																								
Conducted by					In-Situ Analyser, Downloaded by:					Approved by														
Name					Sandra Barber					Signed					Name					Signed				
Date		Temperature (°C)			Conductivity (mS/cm)				Turbidity (ntu)				pH (pH units)			DO (%)								
		SP1	SP3	D22	D62	SP1	SP3	D22	D62	SP1	SP3	D22	D62	SP1	SP3	D22	D62	SP1	SP3	D22	D62			

Groundwater Monitoring Record Sheet																								
Conducted by										Approved by														
In-Situ Analyser, Downloaded by:																								
Name					Sandra Barber					Signed					Name					Signed				
		Temperature (°C)					Conductivity (mS/cm)					pH (pH units)					pHmV (mV)							
Date		MP1	MP2	MP4	MP6	MP7	MP1	MP2	MP4	MP6	MP7	MP1	MP2	MP4	MP6	MP7	MP1	MP2	MP4	MP6	MP7			
01/07/2005		12.18	9.88	9.81	10.21		473.1	361.5	500.2	360.1		6.98	6.34	6.66	6.1		-14.1	23.1	3.5	32.9				
		12.18	9.87	9.81	10.21		473.2	361.5	500.2	360.1		6.98	6.34	6.66	6.1		-13.9	22.8	3.8	32.5				
		12.18	9.88	9.81	10.21		473.4	361.6	500.1	360.1		6.98	6.34	6.66	6.1		-13.9	22.9	3.8	32.8				
		12.18	9.88	9.81	10.21		473.5	361.6	500.2	359.6		6.98	6.34	6.66	6.1		-13.9	22.6	3.5	32.5				
		12.18	9.88	9.81	10.21		473.3	361.7	499.9	360.3		6.98	6.34	6.66	6.1		-13.9	22.9	3.8	32.5				
		12.18	9.88	9.81	10.21		473.4	361.6	499.9	359.8		6.98	6.34	6.66	6.1		-14	22.6	3.8	32.8				
		12.18	9.88	9.81	10.21		473.5	361.7	499.9	359.9		6.98	6.34	6.66	6.1		-14.1	22.9	3.8	32.5				
		12.18	9.88	9.81	10.21		473.7	361.8	499.8	359.9		6.98	6.34	6.66	6.1		-14.1	22.9	3.9	32.8				
		12.18	9.88	9.82	10.21		473.5	361.9	499.7	359.6		6.98	6.34	6.66	6.1		-13.9	22.9	3.9	32.4				
		12.18	9.88	9.81	10.21		473.7	361.7	499.7	359.8		6.98	6.34	6.66	6.1		-13.9	22.9	3.9	32.9				
		12.18	9.88	9.81	10.21		473.8	361.8	499.8	360.1		6.98	6.34	6.66	6.1		-13.9	22.6	3.6	33				
		12.18	9.88	9.81	10.21		473.8	361.9	499.6	359.5		6.98	6.34	6.66	6.1		-13.9	22.6	3.8	32.9				
		12.18	9.88	9.82	10.21		473.8	362	499.6	360.2		6.98	6.34	6.66	6.1		-14	22.9	3.5	32.8				
		12.18	9.88	9.81	10.21		474	362	499.4	359.3		6.98	6.33	6.66	6.1		-14.1	23.1	3.8	32.9				
		12.18	9.88	9.81	10.21		474	362	499.5	359.9		6.98	6.34	6.66	6.1		-14.1	22.9	3.6	32.8				
		12.18	9.88	9.81	10.21		473.9	362.2	499.5	359.8		6.98	6.33	6.66	6.1		-14.2	23.3	3.5	33				
		12.18	9.88	9.81	10.21		474	362.2	499.4	359.9		6.98	6.34	6.66	6.1		-14.2	23.1	3.8	32.9				
		12.18	9.88	9.81	10.21		474	362.3	499.4	359.9		6.98	6.34	6.66	6.1		-14	23.1	3.6	32.6				
		12.18	9.88	9.82	10.21		474.1	362.5	499.6	359.8		6.98	6.33	6.66	6.1		-13.9	23.4	3.8	32.9				
		12.18	9.88	9.82	10.21		474.2	362.6	499.6	359.8		6.98	6.33	6.66	6.1		-14.1	23.6	3.9	32.5				
		12.18	9.88	9.81	10.21		474.1	362.8	499.6	359.6		6.98	6.33	6.66	6.1		-13.9	23.5	3.9	32.5				
		12.18	9.88	9.82	10.21		474.4	363	499.4	359.2		6.98	6.33	6.66	6.1		-13.9	23.4	3.6	32.8				
		12.18	9.88	9.82	10.21		474.3	363.2	499.5	359.4		6.98	6.32	6.66	6.1		-14.1	23.7	3.5	32.5				
		12.18	9.88	9.82	10.21		474.5	363.3	499.6	360.1		6.98	6.32	6.66	6.11		-14.2	23.7	3.9	32.4				
		12.18	9.88	9.82	10.21		474.4	363.6	499.6	360.3		6.98	6.33	6.66	6.1		-14.2	23.4	4	32.8				
		12.18	9.88	9.82	10.21		474.5	363.7	499.4	359.8		6.98	6.32	6.66	6.1		-14	23.7	4	32.8				
		12.18	9.88	9.82	10.21		474.6	363.7	499.3	360.1		6.98	6.33	6.65	6.1		-13.9	23.5	4	32.5				
		12.19	9.88	9.82	10.21		474.7	363.9	499.5	360.3		6.98	6.33	6.66	6.1		-14	23.4	3.7	32.5				
		12.19	9.88	9.82	10.21		474.8	364.1	499.4	360		6.98	6.33	6.65	6.11		-14.1	23.4	4	32.4				
		12.19	9.88	9.82	10.21		474.9	364.3	499.2	360.2		6.98	6.33	6.65	6.1		-14	23.4	4.1	32.8				
		12.19	9.88	9.82	10.21		475.1	364.3	499.2	360.2		6.98	6.32	6.65	6.1		-14	23.7	4.2	32.5				
		12.19	9.88	9.82	10.21		474.9	364.5	499.3	359.9		6.98	6.32	6.65	6.11		-14.1	23.7	4.2	32.4				
		12.19	9.88	10.04	10.21		475.2	364.7	491.9	360.3		6.98	6.33	6.56	6.11		-14.2	23.5	9.4	32.3				
		12.19	9.88	9.99	10.21		475.1	364.7	491.7	360.2		6.98	6.33	6.59	6.11		-14	23.6	7.6	32.4				
		12.19	9.88	9.96	10.21		475.2	364.9	491.8	359.9		6.98	6.33	6.6	6.11		-14.2	23.7	6.9	32.3				
	10.88	12.19	9.88	9.94	10.21	275	475.4	364.9	492	359.9	5.97	6.98	6.33	6.61	6.1	42.9	-14.2	23.4	6.6	32.8				
	10.67	13.09	9.88	9.93	10.33	274.5	466	365	491.9	360.3	5.99	6.97	6.33	6.61	6.13	41.7	-13.1	23.3	6.3	30.9				
	10.54	13.26	10.32	9.92	10.21	274.6	464.9	349.9	491.9	362.3	5.98	6.93	6.34	6.61	6.09	42	-11	22.6	6.5	33.3				
	10.47	13.4	10.16	9.91	10.21	273.9	463.5	345.8	491.9	362.8	5.98	6.92	6.34	6.62	6.09	42.1	-10.7	23.1	6.1	33.1				
	10.43	13.49	10.08	9.91	10.21	273.3	462.4	346.7	491.8	361.3	5.97	6.92	6.32	6.62	6.1	42.8	-10.6	23.9	6	32.7				
	10.39	13.55	10.03	9.91	10.21	272.9	461.1	346.3	491.8	361.1	5.96	6.92	6.31	6.62	6.1	42.8	-10.3	24.4	5.9	32.5				
	10.37	13.58	10	9.9	10.21	272.6	460.2	345.3	492.3	360.1	5.96	6.92	6.32	6.62	6.1	42.9	-10.3	24.2	5.7	32.9				
	10.36	13.61	9.98	9.9	10.21	272.5	459.5	344.2	492.3	360.5	5.97	6.91	6.31	6.62	6.1	42.4	-10.1	24.5	5.7	32.5				
	10.34	13.64	9.96	9.9	10.21	272.4	459.1	343.1	492.3	360.4	5.98	6.91	6.31	6.62	6.1	42.2	-9.8	24.7	6	32.9				
	10.33	13.65	9.95	9.9	10.21	272.3	458.4	342.4	492.6	359.1	5.97	6.9	6.31	6.62	6.1	42.8	-9.6	24.4	6	32.9				
	10.32	13.66	9.94	9.9	10.21	272.1	458.2	341.6	492.5	359.4	5.96	6.91	6.31	6.63	6.09	42.9	-9.6	24.4	5.7	33.1				
	10.32	13.67	9.94	9.89	10.21	271.6	457.7	340.8	492.3	359.8	5.97	6.91	6.31	6.62	6.09	42.5	-9.6	24.4	6	33				
	10.31	13.68	9.93	9.89	10.21	271.5	457.6	340.5	492.4	360	5.96	6.91	6.31	6.62	6.09	42.8	-9.8	24.7	6	33				
	10.3	13.69	9.93	9.9	10.21	271.5	457.5	339.8	490.4	359.7	5.97	6.91	6.31	6.62	6.1	42.8	-9.8	24.5	6	32.9				

Groundwater Monitoring Record Sheet																				
Conducted by In-Situ Analyser, Downloaded by:											Approved by									
Name Sandra Barber					Signed						Name					Signed				
	Temperature (°C)					Conductivity (mS/cm)					pH (pH units)					pHmV (mV)				
Date	MP1	MP2	MP4	MP6	MP7	MP1	MP2	MP4	MP6	MP7	MP1	MP2	MP4	MP6	MP7	MP1	MP2	MP4	MP6	MP7
	10.3	13.69	9.92	9.93	10.21	271.5	457.3	338.7	490.2	358.8	5.97	6.91	6.31	6.61	6.1	42.7	-9.8	24.8	6.3	33
	10.3	13.7	9.92	9.93	10.21	271.4	457.4	337.7	490.6	359.1	5.98	6.91	6.31	6.62	6.1	42.2	-10.1	24.5	6.1	32.6
	10.29	13.7	9.92	9.93	10.21	271.4	457.5	336.8	490.3	359.1	5.98	6.91	6.31	6.61	6.1	42.1	-10.2	24.6	6.6	32.9
	10.29	13.71	9.92	9.93	10.21	271.4	457.8	336	490.2	359.6	5.97	6.92	6.3	6.6	6.1	42.4	-10.3	25.1	6.8	33
	10.28	13.71	9.91	9.93	10.21	271.4	458.2	335.3	490.3	360.2	5.98	6.92	6.3	6.61	6.1	42.1	-10.3	24.9	6.5	32.6
	10.28	13.71	9.91	9.93	10.21	271.3	458.2	334.8	490.5	359.7	5.98	6.92	6.3	6.6	6.1	41.9	-10.3	25.3	7	33
	10.28	13.72	9.91	9.93	10.21	271.4	458.5	334.3	490	359.9	5.98	6.92	6.3	6.61	6.1	42.3	-10.4	24.9	6.8	33
	10.27	13.72	9.91	9.94	10.21	271.4	458.8	333.9	490.3	360.1	5.97	6.92	6.3	6.6	6.1	42.4	-10.4	25.2	7.1	33
	10.27	13.72	9.91	9.94	10.21	271.4	459	333.4	490.4	360.1	5.97	6.92	6.3	6.6	6.1	42.3	-10.6	25.1	7	33
	10.27	13.73	9.91	9.94	10.21	271.2	459.1	333.1	490.4	359.6	5.98	6.92	6.3	6.61	6.1	42.2	-10.7	25.2	6.6	32.7
	10.27	13.73	9.91	9.93	10.21	271.2	459.2	332.8	490.6	360	5.98	6.92	6.3	6.61	6.11	42.1	-10.7	25.3	6.4	32.4
	10.26	13.73	9.9	9.93	10.21	271.2	459.5	332.5	490.5	360	5.99	6.92	6.3	6.61	6.1	41.6	-10.7	25.3	6.7	32.8
	10.25	13.73	9.9	9.93	10.21	271.2	459.7	332.2	490.3	359.9	5.98	6.92	6.3	6.61	6.1	41.9	-10.7	25.1	6.3	32.7
	10.25	13.74	9.9	9.93	10.21	271.3	460	332	489.9	360.1	5.98	6.93	6.29	6.62	6.11	41.9	-10.8	25.5	6.2	32.4
	10.25	13.74	9.9	9.93	10.21	271.2	460.2	331.6	489.9	360.7	5.99	6.93	6.29	6.61	6.1	41.4	-11	25.6	6.5	32.8
	10.25	13.74	9.9	9.93	10.21	271.2	460.1	331.4	489.5	359.6	5.99	6.93	6.29	6.61	6.1	41.3	-11.2	25.7	6.5	32.9
	10.25	13.74	9.9	9.93	10.21	271.1	460.6	331.3	489.2	360.2	5.99	6.93	6.29	6.61	6.1	41.6	-11	25.8	6.5	32.6
	10.25	13.74	9.9	9.93	10.21	271.2	460.8	331.2	489.1	360.1	5.99	6.93	6.29	6.61	6.1	41.7	-11.2	25.5	6.5	32.9
	10.25	13.74	9.9	9.93	10.21	271.3	460.9	331.2	488.8	360.5	5.99	6.93	6.29	6.62	6.1	41.6	-11.2	25.5	6.2	32.5
	10.24	13.75	9.9	9.93	10.21	271.3	460.9	331.1	488.7	359.5	5.99	6.94	6.29	6.61	6.11	41.6	-11.4	25.6	6.5	32.4
	10.24	13.75	9.9	9.93	10.21	271.2	461.2	331.3	488.6	359.6	5.99	6.93	6.28	6.61	6.1	41.6	-11.3	26.1	6.6	32.8
	10.24	13.75	9.9	9.93	10.21	271.2	461.2	331.3	488.5	360.4	5.99	6.93	6.28	6.61	6.1	41.6	-11.3	26.2	6.3	32.5
	10.23	13.75	9.9	9.93	10.21	271.1	461.4	331.3	488.3	359.5	5.99	6.94	6.28	6.62	6.1	41.4	-11.5	26.3	6.2	32.8
	10.23	13.75	9.9	9.93	10.21	271.4	461.5	331.4	488.2	359.9	5.99	6.94	6.28	6.61	6.1	41.5	-11.5	26.4	6.6	32.9
	10.23	13.76	9.9	9.93	10.21	271.4	461.6	331.4	488.1	360.5	5.99	6.94	6.28	6.61	6.1	41.4	-11.5	26.2	6.7	32.8
	10.23	13.76	9.9	9.93	10.21	271.3	461.8	331.3	488.1	360	6	6.94	6.28	6.61	6.1	41	-11.5	26.1	6.4	32.9
	10.23	13.76	9.9	9.93	10.21	271.4	461.9	331.3	488	359.7	6	6.94	6.27	6.61	6.1	40.9	-11.7	26.5	6.7	33
	10.22	13.76	9.9	9.93	10.21	271.3	462.2	331.4	487.9	359.8	5.99	6.94	6.28	6.61	6.1	41.2	-11.6	26.2	6.8	32.9
	10.22	13.76	9.9	9.93	10.21	271.3	462.4	331.2	488	358.7	6	6.94	6.28	6.61	6.1	40.9	-11.8	26.1	6.8	32.6
	10.22	13.76	9.9	9.93	10.21	271.3	462.3	331.3	488.1	359.7	5.99	6.94	6.28	6.6	6.11	41.2	-11.9	26.4	6.8	32.4
	10.22	13.76	9.9	9.93	10.21	271.2	462.6	331.1	487.9	360.1	6	6.94	6.28	6.6	6.1	40.8	-11.7	26.4	6.8	32.8
	10.22	13.76	9.9	9.93	10.21	271.4	462.7	331.1	487.8	360.2	6	6.95	6.28	6.61	6.1	40.7	-11.9	26.1	6.5	32.9
	10.22	13.77	9.9	9.93	10.21	271.4	462.7	331.1	488	360.1	6	6.94	6.29	6.61	6.1	41.1	-11.8	25.9	6.8	32.9
	10.22	13.77	9.9	9.93	10.21	271.3	462.9	331.1	488	358.7	6	6.95	6.28	6.61	6.1	40.8	-12	26.2	6.5	33
	10.22	13.77	9.9	9.93	10.21	271.2	462.9	330.9	488	360	6	6.95	6.29	6.61	6.1	40.6	-12.1	25.9	6.4	33
	10.22	13.77	9.9	9.93	10.21	271.4	463.1	330.9	488.2	359.6	6	6.95	6.28	6.61	6.1	41	-12.1	26.1	6.3	33
	10.22	13.77	9.9	9.93	10.21	271.4	463.2	331	488.5	360.1	6	6.95	6.28	6.61	6.1	40.7	-12	26.1	6.7	32.5
	10.22	13.77	9.9	9.93	10.21	271.4	463.4	330.9	488.6	360.2	6.01	6.95	6.28	6.61	6.11	40.6	-12	26.1	6.4	32.3
	10.22	13.78	9.9	9.93	10.21	271.3	463.5	331	488.7	360.3	6	6.95	6.28	6.61	6.11	40.9	-12.2	26.1	6.3	32.3
	10.22	13.78	9.9	9.93	10.21	271.4	463.6	331	488.6	359.5	6	6.95	6.28	6.62	6.1	40.6	-12.1	26	6.2	32.8
	10.22	13.78	9.9	9.93	10.21	271.3	463.7	331	488.7	360	6	6.95	6.28	6.62	6.1	40.9	-12.1	26	6.2	32.8
	10.22	13.78	9.9	9.93	10.21	271.4	463.9	331.1	488.8	360	6	6.95	6.29	6.62	6.1	40.9	-12.1	25.7	6.2	32.9
	10.22	13.78	9.9	9.93	10.21	271.2	463.9	331.2	489	359.9	6.01	6.95	6.29	6.61	6.1	40.5	-12.3	25.6	6.5	32.9
	10.22	13.78	9.9	9.93	10.21	271.2	464.1	331.2	489.1	360	6	6.95	6.29	6.61	6.1	40.8	-12.3	25.5	6.5	32.9
	10.22	13.78	9.9	9.93	10.21	271.3	464.4	331.4	489.1	359.8	6	6.95	6.29	6.61	6.1	40.9	-12.3	25.7	6.5	32.5
	10.22	13.78	9.9	9.93	10.21	271.3	464.2	331.5	489.2	360.1	6.01	6.95	6.29	6.61	6.1	40.5	-12.3	25.4	6.5	32.5
	10.22	13.78	9.9	9.93	10.21	271.4	464.4	331.7	489.1	360.4	6.01	6.95	6.29	6.61	6.11	40.3	-12.5	25.6	6.5	32.4
	10.22	13.79	9.9	9.93	10.21	271.4	464.5	331.7	489.4	359.8	6	6.96	6.3	6.61	6.11	40.7	-12.5	25.3	6.5	32.4
	10.22	13.79	9.9	9.93	10.21	271.4	464.7	331.8	489.3	359.7	6.01	6.95	6.3	6.62	6.11	40.4	-12.4	25.2	6.1	32.3
02/07/2005 00:00																				

02/07/2005 00:00

Groundwater Monitoring Record Sheet																				
Conducted by In-Situ Analyser, Downloaded by:											Approved by									
Name Sandra Barber					Signed						Name					Signed				
Date	Temperature (°C)					Conductivity (mS/cm)					pH (pH units)					pHmV (mV)				
	MP1	MP2	MP4	MP6	MP7	MP1	MP2	MP4	MP6	MP7	MP1	MP2	MP4	MP6	MP7	MP1	MP2	MP4	MP6	MP7
10.22	13.79	9.9	9.93	9.93	10.21	271.3	464.7	332	489.5	360	6	6.95	6.29	6.62	6.1	40.8	-12.4	25.5	6	32.5
10.22	13.79	9.9	9.93	9.93	10.21	271.4	464.9	332.3	489.6	359.9	6.01	6.95	6.29	6.62	6.1	40.4	-12.4	25.4	6	32.5
10.22	13.79	9.9	9.93	9.93	10.21	271.3	465	332.2	489.7	360.2	6	6.96	6.3	6.61	6.1	40.7	-12.6	25.1	6.3	32.8
10.22	13.79	9.9	9.93	9.93	10.21	271.3	465	332.5	489.8	360	6.01	6.96	6.3	6.62	6.1	40.4	-12.6	25.3	6	32.5
10.22	13.79	9.9	9.93	9.93	10.21	271.3	465.1	332.6	489.9	360.1	6	6.95	6.3	6.62	6.1	40.7	-12.5	25.3	5.9	32.5
10.22	13.79	9.9	9.93	9.93	10.21	271.3	465.2	332.8	489.9	360.5	6.01	6.96	6.3	6.62	6.11	40.4	-12.6	25	5.9	32.3
10.22	13.79	9.9	9.93	9.93	10.21	271.4	465.3	333	489.9	360.2	6.01	6.96	6.3	6.61	6.1	40.2	-12.7	25.1	6.3	32.8
10.22	13.79	9.9	9.93	9.93	10.21	271.3	465.5	333.2	490	360.1	6	6.96	6.3	6.61	6.1	40.6	-12.8	25.1	6.3	32.9
10.22	13.79	9.9	9.93	9.93	10.21	271.3	465.7	333.4	490.1	359.9	6	6.96	6.31	6.61	6.1	40.7	-12.8	24.8	6.3	32.5
10.22	13.8	9.9	9.93	9.93	10.21	271.4	465.6	333.6	490.2	359.9	6	6.96	6.31	6.61	6.11	40.8	-12.8	24.7	6.3	32.4
10.22	13.8	9.9	9.93	9.93	10.21	271.4	465.8	333.9	490	359.9	6	6.96	6.3	6.62	6.1	40.8	-12.6	24.9	6	32.8
10.22	13.8	9.9	9.93	9.93	10.21	271.4	465.8	334.1	490.2	359.8	6.01	6.96	6.31	6.62	6.1	40.4	-12.8	24.6	6.2	32.5
10.22	13.8	9.9	9.94	9.94	10.21	271.3	466	334.3	490.2	360.6	6.01	6.96	6.31	6.62	6.1	40.3	-12.8	24.8	5.9	32.4
10.22	13.8	9.9	9.94	9.94	10.21	271.4	466.1	334.6	490.1	360.2	6.01	6.96	6.31	6.62	6.1	40.2	-12.9	24.8	6.2	32.9
10.22	13.8	9.9	9.93	9.93	10.21	271.6	466.1	334.9	490.3	359.8	6	6.96	6.31	6.62	6.1	40.6	-12.8	24.5	6.2	32.9
10.22	13.8	9.9	9.93	9.93	10.21	271.4	466.1	335.3	490.2	360	6	6.96	6.31	6.62	6.1	40.7	-12.9	24.7	5.9	32.5
10.22	13.8	9.9	9.93	9.93	10.21	271.6	466.2	335.7	490.3	360.3	6.01	6.96	6.31	6.62	6.11	40.3	-13	24.4	5.8	32.4
10.22	13.8	9.9	9.93	9.93	10.21	271.6	466.3	335.9	490.2	359.4	6	6.97	6.32	6.62	6.11	40.6	-13.1	24.2	5.7	32.4
10.22	13.8	9.9	9.94	9.94	10.21	271.7	466.5	336.5	490.3	359.9	6.01	6.96	6.31	6.62	6.1	40.3	-12.9	24.4	5.7	32.8
10.22	13.8	9.9	9.94	9.94	10.21	272	466.4	337.2	490.4	359.6	6	6.96	6.32	6.62	6.1	40.6	-13.1	24.2	6.1	32.6
10.22	13.8	9.9	9.94	9.94	10.21	272.1	466.5	337.6	490.2	360.2	6.01	6.96	6.32	6.62	6.1	40.3	-12.9	24	6.2	32.9
10.22	13.8	9.9	9.94	9.94	10.21	272.4	466.6	338.2	490.2	360	6.01	6.96	6.31	6.62	6.1	40.2	-12.9	24.3	5.8	32.9
10.22	13.8	9.9	9.94	9.94	10.21	272.6	466.8	338.9	490.2	359.9	6	6.97	6.31	6.62	6.1	40.6	-13.1	24.3	5.7	32.8
10.22	13.8	9.9	9.93	9.93	10.21	273	466.9	339.7	490.3	360.4	6	6.97	6.31	6.62	6.1	40.6	-13.1	24.3	6.1	32.5
10.22	13.8	9.9	9.94	9.94	10.21	273.1	467	340.6	490.4	360.2	6	6.96	6.31	6.62	6.1	40.7	-13	24.2	6.1	32.8
10.22	13.81	9.9	9.94	9.94	10.21	273.3	467	341	490.4	360.1	6	6.96	6.32	6.62	6.1	40.8	-13	24.2	6.1	33
10.22	13.81	9.9	9.94	9.94	10.21	273.5	467.2	341.5	490.4	360.2	6	6.97	6.32	6.62	6.1	40.8	-13.2	23.9	5.8	32.5
10.22	13.81	9.9	9.94	9.94	10.21	273.5	467.4	342.1	490.2	360.3	6.01	6.97	6.32	6.62	6.1	40.3	-13.1	23.7	6.1	32.5
10.22	13.81	9.9	9.94	9.94	10.21	273.6	467.4	342.7	490.5	360	6.01	6.97	6.32	6.62	6.1	40.2	-13.1	23.7	5.8	32.8
10.22	13.81	9.9	9.93	9.93	10.21	273.7	467.3	343.1	490.4	360.2	6.01	6.97	6.33	6.62	6.1	40.2	-13.2	23.6	6	32.6
10.22	13.81	9.9	9.94	9.94	10.21	274	467.5	343.7	490.2	359.7	6.01	6.97	6.33	6.62	6.1	40.2	-13.3	23.6	5.7	32.8
10.21	13.81	9.9	9.93	9.93	10.21	274	467.4	344.1	490.2	359.6	6	6.97	6.33	6.62	6.1	40.6	-13.2	23.6	6	33
10.21	13.81	9.9	9.94	9.94	10.21	274.1	467.7	344.8	490.1	359.9	6	6.97	6.32	6.62	6.1	40.7	-13.2	23.8	5.7	32.9
10.22	13.81	9.9	9.94	9.94	10.21	274.2	467.7	345.4	490.2	360.2	6	6.97	6.32	6.62	6.1	40.7	-13.2	23.9	6	33
10.22	13.81	9.9	9.94	9.94	10.21	274.3	467.8	345.6	490.3	360.3	6.01	6.97	6.32	6.62	6.1	40.4	-13.2	23.9	6.1	32.9
10.22	13.81	9.9	9.94	9.94	10.21	274.3	467.9	345.9	490.3	360	6.01	6.97	6.33	6.62	6.1	40.3	-13.2	23.6	6.1	32.9
10.21	13.82	9.9	9.94	9.94	10.21	274.3	467.9	346.2	490.2	359.6	6	6.97	6.33	6.62	6.1	40.6	-13.4	23.4	5.7	32.6
10.22	13.82	9.9	9.94	9.94	10.21	274.6	467.9	346.5	490.2	359.7	6.01	6.97	6.32	6.62	6.1	40.3	-13.5	23.7	6	32.7
10.22	13.82	9.9	9.94	9.94	10.21	274.5	468.1	346.6	490.2	360.1	6.01	6.97	6.33	6.62	6.1	40.2	-13.5	23.4	5.7	32.8
10.22	13.82	9.9	9.94	9.94	10.21	274.6	468	346.7	490.3	359.8	6.01	6.97	6.33	6.62	6.1	40.2	-13.5	23.4	6	32.6
10.21	13.82	9.9	9.94	9.94	10.21	274.7	468.3	347.1	490.2	360.4	6.01	6.97	6.33	6.62	6.11	40.2	-13.4	23.6	6	32.4
10.21	13.82	9.9	9.94	9.94	10.21	274.8	468.4	347	490.4	360.3	6.01	6.97	6.32	6.62	6.1	40.2	-13.5	23.7	5.7	32.8
10.21	13.82	9.9	9.94	9.94	10.21	274.8	468.4	347.2	490.4	360.3	6	6.97	6.33	6.63	6.1	40.6	-13.4	23.4	5.7	32.9
10.21	13.82	9.9	9.94	9.94	10.21	274.9	468.4	347.5	490.3	360.2	6	6.97	6.33	6.62	6.1	40.8	-13.5	23.6	6	32.6
10.21	13.82	9.9	9.94	9.94	10.21	275.3	468.4	347.8	490.4	360.5	6.01	6.97	6.33	6.63	6.11	40.5	-13.4	23.4	5.7	32.3
10.21	13.82	9.9	9.94	9.94	10.21	275.5	468.6	347.9	490.4	360.4	6.01	6.97	6.33	6.62	6.11	40.4	-13.4	23.3	6	32.3
10.21	13.82	9.9	9.94	9.94	10.21	276	468.6	348	490.4	359.9	6.01	6.97	6.33	6.63	6.11	40.4	-13.6	23.2	5.7	32.4
10.21	13.82	9.9	9.94	9.94	10.21	276.4	468.7	348.3	490.5	359.2	6.01	6.98	6.33	6.62	6.11	40.4	-13.7	23.5	6	32.3
10.21	13.82	9.9	9.94	9.94	10.21	276.7	468.7	348.3	490.4	360.4	6.01	6.97	6.33	6.63	6.1	40.3	-13.5	23.6	5.7	32.8

Groundwater Monitoring Record Sheet																				
Conducted by In-Situ Analyser, Downloaded by:											Approved by									
Name Sandra Barber					Signed						Name					Signed				
	Temperature (°C)					Conductivity (mS/cm)					pH (pH units)					pHmV (mV)				
Date	MP1	MP2	MP4	MP6	MP7	MP1	MP2	MP4	MP6	MP7	MP1	MP2	MP4	MP6	MP7	MP1	MP2	MP4	MP6	MP7
	10.21	13.82	9.9	9.94	10.21	276.9	468.9	348.5	490.4	360.4	6.01	6.98	6.33	6.62	6.1	40.3	-13.7	23.6	6	32.5
	10.21	13.82	9.9	9.94	10.21	277	468.9	349	490.5	360	6.01	6.98	6.33	6.62	6.1	40.2	-13.8	23.6	6	32.5
	10.21	13.83	9.9	9.94	10.21	277.3	469.1	349.2	490.5	359.5	6.01	6.98	6.33	6.63	6.1	40.1	-13.6	23.3	5.7	32.7
	10.21	13.83	9.9	9.94	10.21	277.4	469.1	349.5	490.7	359.7	6.01	6.97	6.33	6.62	6.1	40.1	-13.6	23.4	6	32.5
	10.21	13.83	9.9	9.94	10.21	277.5	469.3	349.9	490.3	360.1	6.01	6.98	6.33	6.63	6.1	40.5	-13.6	23.4	5.6	32.8
	10.21	13.83	9.9	9.94	10.21	277.6	469.4	350.2	490.5	359.8	6	6.98	6.33	6.63	6.1	40.6	-13.6	23.2	5.6	32.5
	10.21	13.83	9.9	9.94	10.21	277.7	469.3	350.4	490.5	360.4	6	6.98	6.33	6.62	6.11	40.6	-13.7	23.4	5.9	32.4
	10.21	13.83	9.9	9.94	10.21	277.8	469.5	350.7	490.5	360.2	6.01	6.98	6.33	6.62	6.1	40.3	-13.7	23.4	6	32.7
	10.21	13.83	9.9	9.94	10.21	277.9	469.6	350.8	490.5	360.2	6.01	6.98	6.33	6.62	6.1	40.2	-13.9	23.4	6	32.6
	10.21	13.83	9.9	9.94	10.21	277.9	469.6	351.2	490.7	359.6	6.01	6.98	6.33	6.63	6.1	40.2	-13.7	23.4	5.6	32.8
	10.21	13.83	9.9	9.94	10.21	277.9	469.8	351.6	490.6	359.9	6.01	6.98	6.33	6.62	6.1	40.2	-13.7	23.4	5.9	32.9
	10.21	13.83	9.91	9.94	10.21	277.9	469.8	351.8	490.8	359.9	6.01	6.98	6.33	6.62	6.1	40.1	-13.9	23.1	6	32.8
	10.21	13.83	9.9	9.94	10.21	278	470	352.3	490.9	359.9	6.01	6.98	6.34	6.63	6.1	40.5	-13.8	22.9	5.6	32.8
	10.21	13.83	9.9	9.94	10.21	277.8	470.2	352.5	490.8	360.1	6	6.98	6.33	6.63	6.1	40.6	-13.9	23.3	5.6	32.8
	10.21	13.83	9.9	9.94	10.21	277.8	470.3	352.7	490.9	360.2	6.01	6.98	6.34	6.62	6.1	40.3	-14	23	5.9	32.8
	10.21	13.83	9.9	9.94	10.21	277.7	470.4	352.8	490.9	360	6	6.98	6.34	6.63	6.1	40.6	-13.9	22.9	5.6	32.8
	10.21	13.83	9.9	9.94	10.21	277.7	470.4	353.5	490.9	359.3	6.01	6.98	6.34	6.62	6.1	40.2	-13.8	22.9	5.9	32.5
	10.21	13.83	9.91	9.94	10.21	277.6	470.5	353.6	490.8	360	6.01	6.98	6.33	6.63	6.1	40.5	-14	23.3	5.6	32.8
	10.21	13.83	9.9	9.94	10.21	277.6	470.6	353.9	491	360.2	6.01	6.98	6.34	6.62	6.1	40.2	-13.9	23	5.9	32.9
	10.21	13.83	9.91	9.94	10.21	277.5	470.7	354.1	490.8	360.2	6.01	6.98	6.34	6.63	6.1	40.5	-13.9	22.9	5.6	32.8
	10.21	13.83	9.9	9.94	10.21	277.5	470.9	354.4	490.7	359.5	6	6.98	6.34	6.63	6.1	40.6	-14	22.9	5.5	32.8
	10.21	13.83	9.91	9.94	10.21	277.3	471	354.5	490.7	360.4	6.01	6.98	6.33	6.62	6.1	40.3	-13.9	23.2	5.8	32.5
	10.21	13.84	9.91	9.94	10.21	277.2	470.9	354.9	490.7	359.8	6.01	6.98	6.34	6.62	6.1	40.2	-14.1	22.9	5.9	32.8
	10.21	13.84	9.91	9.94	10.21	277.1	471.1	354.8	490.6	360.1	6	6.98	6.33	6.63	6.1	40.6	-14.2	23.1	5.6	32.5
	10.21	13.84	9.91	9.94	10.21	277	471.3	355.1	490.7	360.3	6	6.98	6.34	6.62	6.11	40.7	-14.2	22.9	5.9	32.4
	10.21	13.84	9.91	9.94	10.21	276.9	471.4	355.2	490.6	360.3	6.01	6.99	6.33	6.63	6.1	40.4	-14.2	23.1	5.6	32.8
	10.21	13.84	9.91	9.94	10.21	276.8	471.4	355.4	490.7	359.8	6	6.98	6.34	6.62	6.1	40.7	-14.1	22.9	5.9	32.5
	10.21	13.84	9.91	9.94	10.21	276.8	471.5	355.7	490.5	359.6	6.01	6.98	6.33	6.63	6.1	40.4	-14	23.1	5.6	32.8
	10.21	13.84	9.91	9.94	10.21	276.7	471.7	355.9	490.8	359.8	6.01	6.98	6.34	6.63	6.1	40.3	-14	22.9	5.5	32.6
	10.21	13.84	9.91	9.94	10.21	276.7	471.6	356	490.8	360.1	6	6.98	6.33	6.62	6.1	40.7	-14.1	23.1	5.8	32.7
	10.21	13.84	9.91	9.94	10.21	276.8	471.7	356.1	491.1	360.5	6	6.98	6.33	6.63	6.1	40.8	-14	23.1	5.5	32.8
	10.21	13.84	9.91	9.94	10.21	276.7	472	356.2	490.9	360.4	6	6.98	6.33	6.63	6.1	40.9	-14.1	23.1	5.4	32.8
	10.21	13.84	9.91	9.94	10.21	276.7	471.8	356.5	491	359.9	6.01	6.98	6.34	6.63	6.1	40.5	-14.1	22.9	5.4	32.9
	10.21	13.84	9.91	9.94	10.21	276.9	472.1	356.4	491.2	360	6.01	6.98	6.33	6.62	6.1	40.4	-14.2	23.1	5.7	32.5
	10.21	13.84	9.91	9.94	10.21	276.8	472.1	356.6	491.1	360.6	6.01	6.99	6.33	6.62	6.11	40.3	-14.3	23.2	5.8	32.3
	10.21	13.84	9.91	9.94	10.21	276.9	472.1	356.5	491	360.1	6.01	6.99	6.33	6.62	6.1	40.3	-14.4	23.1	5.8	32.8
	10.21	13.84	9.91	9.94	10.21	277	472.1	356.7	490.9	360.2	6.01	6.99	6.34	6.63	6.1	40.3	-14.3	22.9	5.4	32.8
	10.21	13.84	9.91	9.94	10.21	277	472.1	356.7	491.5	360.3	6.01	6.99	6.34	6.63	6.1	40.2	-14.3	23.1	5.4	32.5
	10.21	13.84	9.91	9.94	10.21	277	472.3	356.6	491.5	360.1	6	6.99	6.34	6.63	6.11	40.6	-14.3	22.8	5.3	32.4
	10.21	13.85	9.91	9.94	10.21	277	472.3	356.7	491.7	360	6	6.99	6.34	6.63	6.1	40.8	-14.3	23.1	5.7	32.8
	10.21	13.85	9.91	9.94	10.21	276.9	472.2	356.7	491.6	359.3	6	6.99	6.33	6.63	6.1	40.8	-14.3	23.1	5.4	32.5
	10.21	13.85	9.91	9.94	10.21	277	472.4	356.7	491.6	359.8	6.01	6.99	6.33	6.62	6.1	40.4	-14.5	23.1	5.7	32.9
	10.21	13.85	9.91	9.94	10.21	276.8	472.5	356.9	491.5	359.6	6	6.99	6.33	6.63	6.1	40.7	-14.4	23.1	5.4	32.5
	10.21	13.85	9.91	9.94	10.21	276.9	472.6	356.6	491.5	359.6	6	6.99	6.33	6.63	6.1	40.8	-14.3	23.1	5.3	32.5
	10.21	13.85	9.91	9.94	10.21	276.7	472.5	356.7	491.4	360	6.01	6.99	6.34	6.63	6.11	40.3	-14.5	22.8	5.7	32.3
03/07/2005 00:00	10.22	13.85	9.91	9.94	10.21	276.7	472.6	356.6	491.3	360.2	6	6.99	6.34	6.62	6.1	40.6	-14.4	23.1	5.7	32.8
	10.22	13.85	9.91	9.94	10.21	276.7	472.6	356.6	491.5	359.4	6.01	6.99	6.34	6.62	6.1	40.3	-14.4	22.8	5.7	32.9
	10.22	13.85	9.91	9.94	10.21	276.7	472.6	356.4	491.5	359.9	6.01	6.99	6.34	6.62	6.1	40.2	-14.6	23	5.7	32.9
	10.22	13.85	9.91	9.94	10.21	276.6	472.7	356.2	491.4	360.7	6.01	6.99	6.34	6.63	6.11	40.5	-14.6	22.8	5.4	32.4

Groundwater Monitoring Record Sheet																					
Conducted by In-Situ Analyser, Downloaded by:											Approved by										
Name Sandra Barber					Signed						Name					Signed					
Date	Temperature (°C)					Conductivity (mS/cm)					pH (pH units)					pHmV (mV)					
	MP1	MP2	MP4	MP6	MP7	MP1	MP2	MP4	MP6	MP7	MP1	MP2	MP4	MP6	MP7	MP1	MP2	MP4	MP6	MP7	
10.22	13.86	9.91	9.94	10.21	276.6	472.6	356.3	491.5	360	6.01	6.99	6.34	6.63	6.11	40.5	-14.5	23	5.2	32.4		
10.22	13.85	9.91	9.94	10.21	276.5	472.9	356.1	491.2	359.9	6.01	6.99	6.34	6.63	6.1	40.5	-14.5	23	5.2	32.7		
10.22	13.86	9.91	9.94	10.21	276.6	472.7	356.1	491.3	360.3	6.01	6.99	6.34	6.63	6.1	40.1	-14.5	22.8	5.2	32.8		
10.22	13.86	9.91	9.94	10.21	276.5	472.7	355.8	491.5	360.3	6.01	6.99	6.34	6.63	6.1	40.4	-14.5	22.9	5.2	32.8		
10.22	13.86	9.91	9.94	10.21	276.6	472.8	355.7	491.3	359.9	6.01	6.99	6.34	6.63	6.1	40.3	-14.7	22.8	5.2	32.8		
10.22	13.86	9.91	9.94	10.21	276.6	473	355.5	491.2	359.6	6.02	6.99	6.34	6.63	6.1	40	-14.8	22.6	5.2	33		
10.22	13.86	9.91	9.94	10.21	276.6	473	355.4	491.5	360	6.02	7	6.34	6.63	6.1	39.8	-14.8	22.9	5.6	32.5		
10.22	13.86	9.91	9.94	10.21	276.6	473.1	355.3	491.6	360.4	6.01	6.99	6.34	6.63	6.11	40.1	-14.6	23	5.2	32.4		
10.22	13.86	9.91	9.94	10.21	276.7	473.1	355	491.6	359.9	6.02	6.99	6.34	6.63	6.1	39.8	-14.6	22.7	5.6	32.8		
10.22	13.86	9.91	9.94	10.21	276.7	473.2	355	491.6	360	6.01	6.99	6.34	6.63	6.1	40	-14.8	22.6	5.2	33		
10.22	13.86	9.91	9.94	10.21	276.8	473.2	354.7	491.6	359.9	6.01	6.99	6.34	6.63	6.1	40.1	-14.6	22.6	5.2	32.5		
10.22	13.86	9.91	9.94	10.21	276.9	473.2	354.8	491.5	360.1	6.01	6.99	6.34	6.63	6.1	40	-14.6	22.5	5.5	32.5		
10.22	13.86	9.91	9.94	10.21	277	473.2	354.5	491.7	360.2	6.02	6.99	6.34	6.63	6.11	39.6	-14.6	22.6	5.6	32.4		
10.22	13.86	9.91	9.94	10.21	277	473.4	354.5	491.7	360.3	6.03	6.99	6.34	6.63	6.11	39.4	-14.6	22.8	5.2	32.3		
10.22	13.86	9.91	9.94	10.21	277	473.2	354.3	491.7	359.9	6.03	7	6.34	6.63	6.1	39.2	-14.8	22.6	5.5	32.7		
10.22	13.86	9.91	9.94	10.21	277.2	473.3	354.3	491.6	360	6.03	7	6.34	6.63	6.1	39.1	-14.8	22.9	5.2	32.8		
10.22	13.86	9.91	9.94	10.21	277.3	473.3	354.3	491.5	359.8	6.02	7	6.34	6.63	6.1	39.6	-14.9	22.9	5.5	32.9		
10.22	13.86	9.91	9.94	10.21	277.4	473.2	354.3	491.6	360.4	6.02	6.99	6.34	6.63	6.1	39.6	-14.7	22.9	5.2	32.8		
10.22	13.86	9.91	9.94	10.21	277.6	473.5	354.4	491.6	359.9	6.02	6.99	6.34	6.64	6.1	39.6	-14.7	22.9	5.1	32.5		
10.22	13.86	9.91	9.94	10.21	277.7	473.5	354.2	491.5	359.8	6.03	6.99	6.34	6.63	6.1	39.2	-14.7	22.9	5.5	32.8		
10.22	13.86	9.91	9.94	10.21	277.8	473.5	354.2	491.4	360	6.03	7	6.34	6.63	6.1	39	-14.9	22.9	5.2	32.9		
10.22	13.86	9.91	9.94	10.21	278	473.6	354.3	491.6	360.5	6.03	7	6.34	6.64	6.1	38.9	-14.9	22.9	5.1	32.8		
10.22	13.86	9.91	9.94	10.21	277.9	473.5	354	491.7	359.9	6.04	6.99	6.34	6.63	6.1	38.9	-14.8	22.8	5.4	32.9		
10.22	13.87	9.91	9.94	10.21	278.1	473.4	354.3	491.5	359.3	6.04	6.99	6.34	6.63	6.1	38.8	-14.8	22.9	5.5	32.5		
10.22	13.87	9.91	9.94	10.21	278.2	473.5	354.3	491.6	360	6.04	7	6.34	6.63	6.11	38.8	-14.9	22.6	5.2	32.3		
10.22	13.87	9.91	9.94	10.21	278.3	473.7	354.4	491.6	360.4	6.03	7	6.34	6.63	6.1	39.2	-14.8	22.8	5.5	32.7		
10.22	13.87	9.91	9.94	10.21	278.3	473.5	354.4	491.3	360.7	6.03	6.99	6.34	6.63	6.1	39.2	-14.8	22.8	5.6	32.5		
10.22	13.87	9.91	9.94	10.21	278.5	473.8	354.4	491.5	359.9	6.03	7	6.34	6.63	6.1	38.9	-15	22.8	5.2	32.8		
10.22	13.87	9.91	9.94	10.21	278.6	473.8	354.3	491.5	360.7	6.04	7	6.34	6.63	6.1	38.8	-15	22.9	5.5	32.8		
10.22	13.87	9.91	9.94	10.21	278.6	473.7	354.4	491.7	360.3	6.04	7	6.34	6.63	6.1	38.7	-15	22.8	5.5	32.5		
10.22	13.87	9.91	9.94	10.21	278.7	473.8	354.3	491.6	360.5	6.04	7	6.34	6.63	6.1	38.6	-14.8	22.6	5.5	32.8		
10.22	13.87	9.91	9.94	10.21	278.7	473.8	354.3	491.6	360.5	6.04	7	6.34	6.63	6.1	38.6	-15	22.8	5.5	32.8		
10.22	13.87	9.91	9.94	10.21	278.7	473.9	354.3	491.7	360	6.04	7	6.34	6.63	6.1	38.6	-14.8	22.9	5.2	32.9		
10.22	13.87	9.91	9.94	10.21	278.9	473.9	354.3	491.9	360.4	6.03	7	6.34	6.63	6.1	39	-15	22.6	5.5	32.5		
10.22	13.87	9.91	9.94	10.21	278.8	474	354.2	491.7	360.3	6.03	7	6.35	6.63	6.1	39.1	-14.9	22.5	5.5	32.8		
10.22	13.87	9.91	9.94	10.21	279	474.1	354.1	491.5	360.2	6.03	7	6.34	6.63	6.1	39.1	-15	22.8	5.5	32.5		
10.22	13.87	9.92	9.94	10.21	279	474.2	354.1	491.7	359.8	6.04	7	6.34	6.63	6.11	38.7	-15.1	22.6	5.6	32.4		
10.22	13.87	9.92	9.94	10.21	279	474.1	353.8	491.4	360.3	6.03	7	6.34	6.63	6.11	39	-14.9	22.8	5.2	32.3		
10.22	13.88	9.91	9.94	10.21	278.9	474.1	353.9	491.5	360	6.04	7	6.34	6.64	6.11	38.6	-15.1	22.8	5.1	32.3		
10.22	13.88	9.92	9.94	10.21	278.9	474.4	353.7	491.6	360.3	6.04	7	6.34	6.64	6.1	38.5	-15.1	22.6	5.1	32.8		
10.22	13.88	9.92	9.94	10.21	278.9	474.3	353.6	491.7	360.2	6.03	7	6.34	6.64	6.11	38.9	-15.1	22.8	5.1	32.4		
10.22	13.88	9.92	9.94	10.21	278.7	474.2	353.3	492.1	360.2	6.03	7	6.34	6.63	6.1	39	-15.2	22.6	5.4	32.8		
10.22	13.88	9.92	9.94	10.21	278.8	474.3	353.2	492.1	360.7	6.04	7	6.35	6.63	6.1	38.6	-15.2	22.5	5.1	33		
10.22	13.88	9.92	9.94	10.21	279	474.4	353.1	492.2	359.7	6.04	7	6.35	6.63	6.1	38.5	-15.2	22.5	5.4	32.6		
10.22	13.88	9.92	9.94	10.21	279	474.3	352.9	492.2	359.7	6.04	7	6.34	6.63	6.11	38.4	-15	22.8	5.2	32.4		
10.22	13.88	9.92	9.94	10.21	278.9	474.4	352.8	492	360	6.04	7	6.34	6.64	6.1	38.4	-15	22.8	5.1	32.8		
10.22	13.88	9.92	9.94	10.21	278.9	474.3	352.6	492	360.1	6.04	7	6.35	6.63	6.1	38.8	-15	22.5	5.4	32.8		
10.22	13.88	9.92	9.94	10.21	278.9	474.4	352.4	491.9	360.4	6.04	7	6.35	6.63	6.1	38.5	-15.1	22.5	5.2	32.8		
10.22	13.88	9.92	9.94	10.21	278.9	474.4	352.3	491.8	360.3	6.04	7	6.34	6.64	6.1	38.8	-15.2	22.7	5.1	32.8		

Groundwater Monitoring Record Sheet																					
Conducted by In-Situ Analyser, Downloaded by:											Approved by										
Name Sandra Barber					Signed						Name					Signed					
	Temperature (°C)					Conductivity (mS/cm)					pH (pH units)					pHmV (mV)					
Date	MP1	MP2	MP4	MP6	MP7	MP1	MP2	MP4	MP6	MP7	MP1	MP2	MP4	MP6	MP7	MP1	MP2	MP4	MP6	MP7	
04/07/2005 00:00	10.22	13.88	9.92	9.94	10.21	278.8	474.4	352.3	491.8	359.9	6.04	7	6.34	6.64	6.1	38.8	-15.3	22.8	5.1	32.5	
	10.22	13.88	9.92	9.94	10.21	278.8	474.5	351.9	491.7	359.5	6.04	7	6.35	6.64	6.1	38.8	-15.3	22.5	5.1	32.5	
	10.22	13.88	9.92	9.94	10.21	278.7	474.5	351.7	491.6	359.9	6.04	7	6.35	6.64	6.11	38.5	-15.3	22.4	5.1	32.4	
	10.22	13.88	9.92	9.94	10.21	278.6	474.5	351.8	491.8	360.6	6.04	7	6.34	6.63	6.11	38.3	-15.3	22.6	5.5	32.3	
	10.22	13.88	9.92	9.94	10.21	278.4	474.5	351.6	491.7	360.4	6.05	7	6.34	6.63	6.1	38.3	-15.3	22.8	5.1	32.8	
	10.22	13.89	9.92	9.94	10.21	278.4	474.3	351.5	491.8	360.6	6.04	7	6.35	6.63	6.1	38.7	-15.2	22.5	5.4	32.8	
	10.22	13.88	9.92	9.94	10.21	278.3	474.4	351.7	491.7	360.4	6.04	7	6.34	6.63	6.1	38.5	-15.1	22.6	5.1	33	
	10.22	13.89	9.92	9.94	10.21	278.3	474.6	351.4	491.8	360.2	6.04	7	6.34	6.64	6.1	38.4	-15.3	22.7	5.1	32.8	
	10.22	13.89	9.91	9.94	10.21	278.3	474.4	351.5	491.9	360	6.04	7.01	6.35	6.63	6.1	38.4	-15.4	22.5	5.4	32.5	
	10.22	13.89	9.92	9.94	10.21	278.3	474.5	351.5	491.9	359.4	6.04	7.01	6.34	6.63	6.11	38.5	-15.4	22.6	5.5	32.3	
	10.22	13.89	9.92	9.94	10.21	278.2	474.6	351.4	491.9	359.8	6.03	7.01	6.34	6.63	6.11	38.9	-15.4	22.7	5.5	32.4	
	10.22	13.89	9.92	9.94	10.21	278.4	474.6	351.5	491.9	360.4	6.03	7.01	6.34	6.63	6.1	39	-15.4	22.7	5.2	32.8	
	10.22	13.89	9.92	9.94	10.21	278.3	474.7	351.5	491.9	360.6	6.03	7	6.35	6.63	6.1	39	-15.2	22.4	5.4	32.8	
	10.22	13.89	9.92	9.94	10.21	278.1	474.8	351.6	492.1	359.9	6.03	7	6.34	6.63	6.1	39	-15.3	22.6	5.1	32.8	
	10.22	13.89	9.92	9.94	10.21	278.3	474.7	351.8	492.1	360.3	6.03	7.01	6.35	6.63	6.1	39	-15.4	22.4	5.4	32.9	
	10.22	13.89	9.92	9.94	10.21	278.1	474.7	351.8	492	360.5	6.04	7	6.35	6.63	6.1	38.6	-15.2	22.3	5.1	32.5	
	10.22	13.89	9.92	9.94	10.21	278.2	474.6	352.3	492.1	360.2	6.03	7.01	6.35	6.63	6.1	38.9	-15.4	22.3	5.4	32.8	
	10.22	13.89	9.92	9.94	10.21	278.2	474.6	352.4	491.7	359.8	6.03	7.01	6.34	6.63	6.1	38.9	-15.4	22.6	5.1	32.8	
	10.22	13.89	9.92	9.94	10.21	278.3	474.9	352.5	491.6	360.8	6.04	7	6.34	6.64	6.11	38.6	-15.3	22.7	5.1	32.4	
	10.22	13.89	9.92	9.94	10.21	278.2	474.9	352.8	491.9	360.3	6.03	7.01	6.34	6.64	6.1	38.9	-15.3	22.7	5	32.8	
	10.22	13.89	9.92	9.94	10.21	278.2	474.7	353	492.1	360.6	6.04	7	6.34	6.63	6.1	38.6	-15.2	22.7	5.4	32.8	
	10.22	13.89	9.92	9.94	10.21	278.4	474.9	353.3	492	359.7	6.04	7	6.35	6.64	6.1	38.6	-15.2	22.5	5.1	32.6	
	10.22	13.89	9.92	9.94	10.21	278.3	474.9	353.5	492.1	360.1	6.04	7.01	6.34	6.63	6.11	38.6	-15.4	22.6	5.5	32.4	
	10.22	13.89	9.92	9.94	10.21	278.4	474.9	353.8	492	360.2	6.03	7	6.35	6.63	6.11	39.1	-15.2	22.5	5.1	32.4	
	10.22	13.89	9.92	9.94	10.21	278.3	475	354	492	360.4	6.03	7.01	6.34	6.63	6.11	39.2	-15.4	22.7	5.4	32.4	
	10.21	13.89	9.92	9.94	10.21	278.3	475	354.2	492.2	360.5	6.03	7	6.35	6.63	6.11	38.9	-15.3	22.5	5.1	32.3	
	10.21	13.89	9.92	9.94	10.21	278.3	475.1	354.2	491.9	360.3	6.04	7.01	6.34	6.64	6.11	38.9	-15.4	22.7	5.1	32.3	
	10.21	13.89	9.92	9.94	10.21	278.3	475	354.4	492	360	6.04	7	6.34	6.63	6.11	38.8	-15.3	22.8	5.4	32.3	
	10.21	13.89	9.92	9.94	10.21	278.3	475	354.6	491.9	360.5	6.04	7.01	6.34	6.63	6.11	38.8	-15.4	22.8	5.1	32.3	
	10.21	13.89	9.92	9.94	10.21	278.1	475.3	354.9	492	360.1	6.03	7.01	6.35	6.63	6.1	39.3	-15.4	22.5	5.4	32.7	
	10.21	13.89	9.92	9.94	10.21	278.2	475.1	355	492.2	359.9	6.03	7	6.35	6.63	6.1	39.4	-15.3	22.4	5.5	32.5	
	10.2	13.89	9.92	9.94	10.21	278.2	475.2	355	492.3	359.9	6.03	7	6.34	6.63	6.1	39.1	-15.3	22.7	5.2	32.8	
10.2	13.89	9.92	9.94	10.21	278	475.1	355.2	492	360.2	6.03	7	6.34	6.64	6.1	38.9	-15.3	22.8	5.1	32.5		
10.2	13.89	9.92	9.94	10.21	278	475.2	355.3	492.1	360	6.03	7.01	6.34	6.63	6.1	39.3	-15.4	22.8	5.4	32.8		
10.2	13.89	9.92	9.94	10.21	278	475.2	355.2	492	359.9	6.03	7	6.35	6.64	6.1	39	-15.3	22.5	5.1	32.8		
10.2	13.89	9.92	9.94	10.21	277.9	475.2	355.2	491.9	360.2	6.03	7.01	6.35	6.63	6.1	38.9	-15.4	22.5	5.4	32.9		
10.2	13.89	9.92	9.94	10.21	277.8	475.3	355.3	492.3	360.5	6.03	7.01	6.34	6.64	6.1	39.3	-15.4	22.7	5.1	32.8		
10.2	13.89	9.92	9.94	10.21	277.8	475.5	355.1	492.3	360.2	6.03	7	6.35	6.64	6.1	39.4	-15.3	22.5	5.1	32.8		
10.2	13.89	9.92	9.94	10.21	277.9	475.3	355.2	492.1	360.2	6.03	7.01	6.35	6.64	6.1	39.1	-15.4	22.4	5	32.8		
10.2	13.89	9.92	9.94	10.21	277.6	475.4	355.1	492.4	360.6	6.03	7	6.34	6.63	6.1	39.3	-15.3	22.7	5.4	32.8		
10.21	13.89	9.92	9.94	10.21	277.7	475.4	354.9	492.3	360.3	6.03	7	6.35	6.64	6.1	39.3	-15.3	22.5	5.1	32.5		
10.21	13.89	9.92	9.94	10.21	277.6	475.4	354.8	492.2	360.1	6.03	7.01	6.34	6.63	6.1	38.9	-15.4	22.7	5.4	32.4		
10.21	13.89	9.92	9.94	10.21	277.6	475.5	354.7	492.4	360	6.03	7.01	6.34	6.64	6.1	39.2	-15.5	22.8	5.1	32.7		
10.21	13.9	9.92	9.94	10.21	277.5	475.5	354.8	492.3	360.7	6.03	7.01	6.35	6.63	6.1	38.9	-15.5	22.5	5.4	32.9		
10.21	13.9	9.92	9.94	10.21	277.4	475.7	354.7	492.4	359	6.03	7.01	6.35	6.64	6.1	39.2	-15.5	22.4	5.1	32.8		
10.21	13.9	9.92	9.94	10.21	277.5	475.5	354.6	492.4	360.2	6.03	7	6.35	6.64	6.1	38.9	-15.3	22.4	5	32.5		
10.21	13.9	9.92	9.94	10.21	277.4	475.7	354.5	492.3	360.5	6.03	7	6.34	6.63	6.1	39.2	-15.3	22.6	5.4	32.8		
10.21	13.9	9.92	9.94	10.21	277.3	475.6	354.4	492.5	360.5	6.03	7	6.35	6.63	6.1	39.3	-15.3	22.5	5.4	32.5		
10.21	13.9	9.92	9.94	10.21	277.4	475.7	354.2	492.2	360.1	6.03	7.01	6.34	6.64	6.1	39.2	-15.4	22.7	5.1	32.5		

Groundwater Monitoring Record Sheet																								
Conducted by In-Situ Analyser, Downloaded by:											Approved by													
Name Sandra Barber					Signed						Name					Signed								
Date	Temperature (°C)						Conductivity (mS/cm)						pH (pH units)						pHmV (mV)					
	MP1	MP2	MP4	MP6	MP7		MP1	MP2	MP4	MP6	MP7	MP1	MP2	MP4	MP6	MP7	MP1	MP2	MP4	MP6	MP7			
	10.21	13.9	9.92	9.94	9.94	10.21	277.3	475.6	354.2	492.2	360.2	6.03	7.01	6.34	6.64	6.1	39	-15.5	22.7	5	32.7			
	10.21	13.9	9.92	9.94	10.21	277.4	475.7	354.1	492.3	360	6.03	7.01	6.34	6.63	6.1	38.9	-15.3	22.7	5.4	32.8				
	10.21	13.9	9.92	9.94	10.21	277.4	475.7	354.1	492	359.8	6.03	7	6.35	6.64	6.1	39.4	-15.3	22.5	5.1	32.6				
	10.21	13.9	9.92	9.94	10.21	277.5	475.8	354.1	492.3	359.7	6.02	7	6.34	6.63	6.1	39.6	-15.3	22.6	5.4	32.8				
	10.21	13.9	9.92	9.94	10.21	277.5	475.6	354.1	492.3	360	6.02	7.01	6.35	6.64	6.1	39.6	-15.5	22.4	5.1	32.5				
	10.21	13.9	9.92	9.94	10.21	277.6	475.5	354.1	492.4	359.9	6.03	7.01	6.34	6.64	6.1	39.2	-15.5	22.6	4.9	32.5				
	10.21	13.9	9.92	9.94	10.21	277.6	475.7	353.9	492.6	360.3	6.02	7.01	6.35	6.64	6.1	39.6	-15.6	22.4	4.9	32.8				
	10.22	13.9	9.92	9.94	10.21	277.7	475.6	353.9	492.5	360	6.02	7.01	6.35	6.64	6.1	39.7	-15.4	22.3	4.9	33				
	10.22	13.9	9.92	9.94	10.21	277.7	475.5	354	492.7	359.6	6.03	7.01	6.34	6.64	6.1	39.3	-15.5	22.6	4.9	32.8				
	10.22	13.9	9.92	9.94	10.21	277.8	475.7	353.9	492.7	360.6	6.02	7.01	6.35	6.64	6.1	39.5	-15.4	22.4	4.9	32.8				
	10.22	13.9	9.92	9.94	10.21	277.8	475.5	353.8	492.6	359.3	6.03	7.01	6.34	6.64	6.1	39.1	-15.5	22.6	4.9	32.5				
	10.22	13.9	9.92	9.94	10.21	277.7	475.5	353.9	492.7	359.6	6.03	7.01	6.35	6.64	6.1	39	-15.6	22.4	5	32.5				
	10.22	13.9	9.92	9.94	10.21	277.6	475.5	353.8	492.7	359.9	6.03	7.01	6.34	6.64	6.1	38.9	-15.4	22.6	4.9	32.8				
	10.21	13.9	9.92	9.94	10.21	277.8	475.6	353.9	492.4	360.6	6.03	7.01	6.35	6.63	6.1	38.9	-15.6	22.4	5.4	32.5				
	10.21	13.9	9.92	9.94	10.21	277.6	475.5	354.1	492.3	360.1	6.03	7.01	6.35	6.63	6.11	38.9	-15.4	22.3	5.4	32.4				
	10.22	13.9	9.92	9.94	10.21	277.7	475.6	354.1	492.1	360.6	6.03	7.01	6.35	6.64	6.1	38.9	-15.6	22.3	5.1	32.7				
	10.21	13.9	9.92	9.94	10.21	277.6	475.5	354	492.2	359.7	6.03	7.01	6.34	6.64	6.1	38.9	-15.4	22.6	5	32.5				
	10.22	13.9	9.92	9.94	10.21	277.6	475.6	354.4	492.3	360.3	6.03	7.01	6.35	6.64	6.1	39.4	-15.6	22.3	5	32.4				
	10.22	13.9	9.92	9.94	10.21	277.7	475.4	354.2	492.1	360.3	6.02	7.01	6.34	6.64	6.11	39.5	-15.4	22.6	4.9	32.3				
	10.22	13.9	9.93	9.94	10.21	277.7	475.5	354.1	492.2	361	6.02	7.01	6.34	6.63	6.11	39.6	-15.6	22.6	5.3	32.3				
	10.22	13.9	9.93	9.94	10.21	277.6	475.6	354.5	492.4	360.1	6.03	7.01	6.35	6.63	6.11	39.2	-15.6	22.4	5.4	32.3				

	Air Temp Avg. (°C)	Relative Humidity Avg. (%)	Wind Speed Avg. (m/s)	Wind Direction Avg. (°)	Sunshine Total (Hours)	Rainfall Total (mm)
01/07/2005	13.7	88.2	2.2	124	1.3	1.6
02/07/2005	14.7	87.3	6.5	133	1.3	2.6
03/07/2005	12.9	73.8	5.2	65	2.6	0.8
04/07/2005	12.9	76.8	3.2	74	2.7	1.0
05/07/2005	13.3	92.6	4.4	115	0.4	8.4
06/07/2005	12.4	88.7	4.8	118	0.6	4.6
07/07/2005	13.9	93.4	2.9	87	1.1	0.8
08/07/2005	15.2	94.6	2.2	54	1.3	5.8
09/07/2005	16.1	90.9	2.5	47	1.9	0.4
10/07/2005	16.8	87.9	1.9	113	3.2	0.2
11/07/2005	18.0	83.8	1.8	177	3.0	0.0
12/07/2005	15.4	88.3	1.9	167	2.3	0.0
13/07/2005	15.3	88.9	1.6	143	1.8	0.0
14/07/2005	14.5	90.7	3.9	55	0.9	2.0

28.2

01-Jul-05	1.6
02-Jul-05	2.6
03-Jul-05	0.8
04-Jul-05	1.0
05-Jul-05	8.4
06-Jul-05	4.6
07-Jul-05	0.8
08-Jul-05	5.8
09-Jul-05	0.4
10-Jul-05	0.2
11-Jul-05	0.0
12-Jul-05	0.0
13-Jul-05	0.0
14-Jul-05	2.0

28.2