

1 Monitoring Data

Note: Due to a suspension of works and an ongoing site access problem the monitoring programme has had to be reduced.

Both vibration and noise monitoring have been suspended

Those parameters still being monitored include:

1. Weekly water samples for on-site analysis
2. Downloading the in-situ TSS & Orthophosphate analysers and the weather station
3. Weekly sampling, for laboratory analysis, at SP1, SP3
4. Monthly sampling, for laboratory analysis, at D22, D62, and the MP series

All monitoring data is presented in tabular form, see attached. The sonde data is presented graphically.

1.1 Rainfall Data

The weather data is generated by the on-site weather station.

Date	Rainfall (mm)		Date	Rainfall (mm)
15/07/2005	0.0		22/07/2005	0.8
16/07/2005	0.0		23/07/2005	1.0
17/07/2005	10.2		24/07/2005	0.0
18/07/2005	2.2		25/07/2005	0.0
19/07/2005	1.6		26/07/2005	0.0
20/07/2005	1.6		27/07/2005	0.0
21/07/2005	0.0		28/07/2005	0.0
Total = 17.4 mm				

1.2 Summary

Environment	Comments
Surface Water	<p>Laboratory samples are currently being analysed.</p> <p>From the data available, on average all parameters were within the limits set. However, there were some excursions from set action and trigger levels and these are discussed below in section 2. There were also some single event exceedances but these did not warrant any actions being taken.</p> <p>All locations continue to experience problems with the in-stream dissolved oxygen probes. A reassessment of the monitoring equipment deployed will need to take place.</p>
Groundwater	The sonde data downloaded is shown graphically. Laboratory samples are currently being analysed.
Noise	
Vibration	
Dust	Dust Pots for June 2005 have been sent to the lab for analysis. Results are reported overleaf. The dust concentration recorded at D2 exceeded the dust concentration level set ($350 \text{ mg m}^{-2} \text{ d}^{-1}$).
Weather	There was a total of 17.4 mm of rainfall during the reporting period, with a temperature range of 9.8 to 18.2 °C

2 Environmental Incidents/Near misses/Complaints

The dust level recorded at D2 for the sampling duration 07 June 2005 to 13 July 2005 (35 days) exceeded the set level of 350 mg/m^2 per day averaged over a 30 day sampling period ($350 \text{ mg m}^{-2} \text{ d}^{-1}$). As a result of continuing protestor actions at the terminal site, site activities had to cease on Monday 4th of July and no dampening down of the terminal site or the TCF has taken place since then. It is quite probable that as a result of the recent dry weather, coupled with a prevailing south easterly wind, that dust from the terminal site and the TCF was carried to this sampling location.

The turbidity levels in D22 on the 15th July were over the trigger level for a period of ~5 hours. The water level in D22 is presently very low and there is virtually no flow. As a result any debris passing the sonde has the potential to lodge around the sonde's housing in the water and the sonde is now acting as an impediment to anything passing in the smaller water channel in the drain. It is quite possible that debris will now lodge in and around the housing for prolonged periods of time as a result of low flow. On inspection and cleaning of the sonde small pieces of debris were removed from the housing.

SP3 experienced a rise in pH level from the 23rd July until the 28th July. The pH trigger level of 8 was exceeded and this can be attributed to the lack of flow in the drain where SP3 is situated. The lack of flow and the evaporation of water can result an increase in the concentration of Hydrogen ions in the water and this will effect the pH level.

Weekly Environmental Report - Status	Week Ending: Thur. 28 th July 2005
Generated By: Sandra Barber	
Checked By: Leslie Finnegan	

The conductivity level at SP1 was constantly over the action level of 400µS/cm. Again, this can be attributed to the lack of flow and evaporation of water from the drain which would lead to higher concentration of ions in the water that would allow greater conductivity of an electrical charge.

Surface Water Monitoring Record Sheet													no... 1 of 1	
Conducted by							Approved by							
Name: Leslie Finnegan							Name Leslie Finnegan							
Signed							Signed							
Determinant Results														
	Date	Cond. µS/cm	Temp °C	Turbidity NTU	DO % Sat	TSS mg l ⁻¹	pH	Ortho-phosphate as P µg l ⁻¹	Nitrate as N mg l ⁻¹	Total Phosphorus as P (sw) mg l ⁻¹	Ammonia as NH ₃ -N mg l ⁻¹	Ammonium as NH ₄ mg l ⁻¹	Nitrite as N mg l ⁻¹	Comments
Action Limits		400		150		25	<3.5 or >7.5	40				0.2		
Target Limits		500		200		35	<3 or >8	70				0.5		
Settlement Pond Monitoring														
SP1	15-Jul-05													
SP3	15-Jul-05													
SP1	17-Jul-05													
SP3	17-Jul-05													
SP1 - Lab	17-Jul-05	In Progress												
SP3 - Lab	17-Jul-05	In Progress												
SP1	18-Jul-05													
SP3	18-Jul-05													
SP1	19-Jul-05													
SP3	19-Jul-05													
SP1	20-Jul-05													
SP3	20-Jul-05													
SP1	21-Jul-05													
SP3	21-Jul-05													
SP1 - Lab	21-Jul-05	In Progress												
SP3 - Lab	21-Jul-05	In Progress												
SP1	24-Jul-05													
SP3	24-Jul-05													
SP1	25-Jul-05													
SP3	25-Jul-05													
SP1	26-Jul-05													
SP3	26-Jul-05													
SP1	27-Jul-05	352					7.22							
SP3	27-Jul-05	357					7.13							
SP1 - Lab	27-Jul-05	In Progress												
SP3 - Lab	27-Jul-05	In Progress												
SP1	28-Jul-05													
SP3	28-Jul-05													
Additional Surface Water Monitoring														
D22 - Lab	04-Jul-05	In Progress												
D62 - Lab	04-Jul-05	In Progress												
D22		Sonde Data Presented Graphically												
D62		Sonde Data Presented Graphically												

Note: LAB - Carried out by CLS Laboratories
 Grey shaded areas denote parameters that cannot be analysed on-site or the lab.
 Results detailed above are from on site grab samples only, Data recorded continuously is shown on the following graphs
 Graphs provided for SP1, SP2, D22 and D62 for: Temperature, Turbidity, pH, Conductivity, Orthophosphate, Total Suspended Solids and Total Ammonia
 pH Target and Action Limits to be approved by Statutory Authorities

Groundwater Monitoring Record Sheet											no...	1	of	1
Conducted by						Approved by								
Name: Leslie Finnegan			Signed			Name		Leslie Finnegan		Signed				
Determinant Results														
Location	Date	Cond. uS/cm	Temp °C	BOD mg l ⁻¹	DO % Sat	TSS mg l ⁻¹	Phosphate as P ug l ⁻¹	pH	Total Hardness mg/l CaCO3	Nitrite as NO ₂ mg l ⁻¹	Nitrate as NO ₃ mg l ⁻¹	Phosphate as PO ₄ mg l ⁻¹	Ammonia mg l ⁻¹	
MP 1	27-Jul-05	256						5.12						
MP 2	27-Jul-05	406						5.84						
MP 3	27-Jul-05	453						5.02						
MP 4	27-Jul-05	370						5.76						
MP 5														
MP 6														
MP 7														
MP 8	27-Jul-05	380						5.41						
MP 9														
MP 10a														
MEL BR4a														

Location	Date	TDS mg l ⁻¹	Arsenic ug l ⁻¹	Mercury ug l ⁻¹	Lead ug l ⁻¹	Aluminium ug l ⁻¹	Zinc ug l ⁻¹	Chromium ug l ⁻¹	Copper ug l ⁻¹	Cadmium ug l ⁻¹	Iron ug l ⁻¹	Tin ug l ⁻¹	
MP 1	27-Jul-05	175											
MP 2	27-Jul-05	280											
MP 3	27-Jul-05	3111											
MP 4	27-Jul-05	256											
MP 5													
MP 6													
MP 7													
MP 8	27-Jul-05	263											
MP 9													
MP 10a													
MEL BR4a													

Note: Results detailed above are from on site grab samples only. Data recorded continuously is shown on the following graphs
 Graphs provided for MP1, MP2, MP4, MP6 and MP7 for: Temperature, Conductivity, and pH.

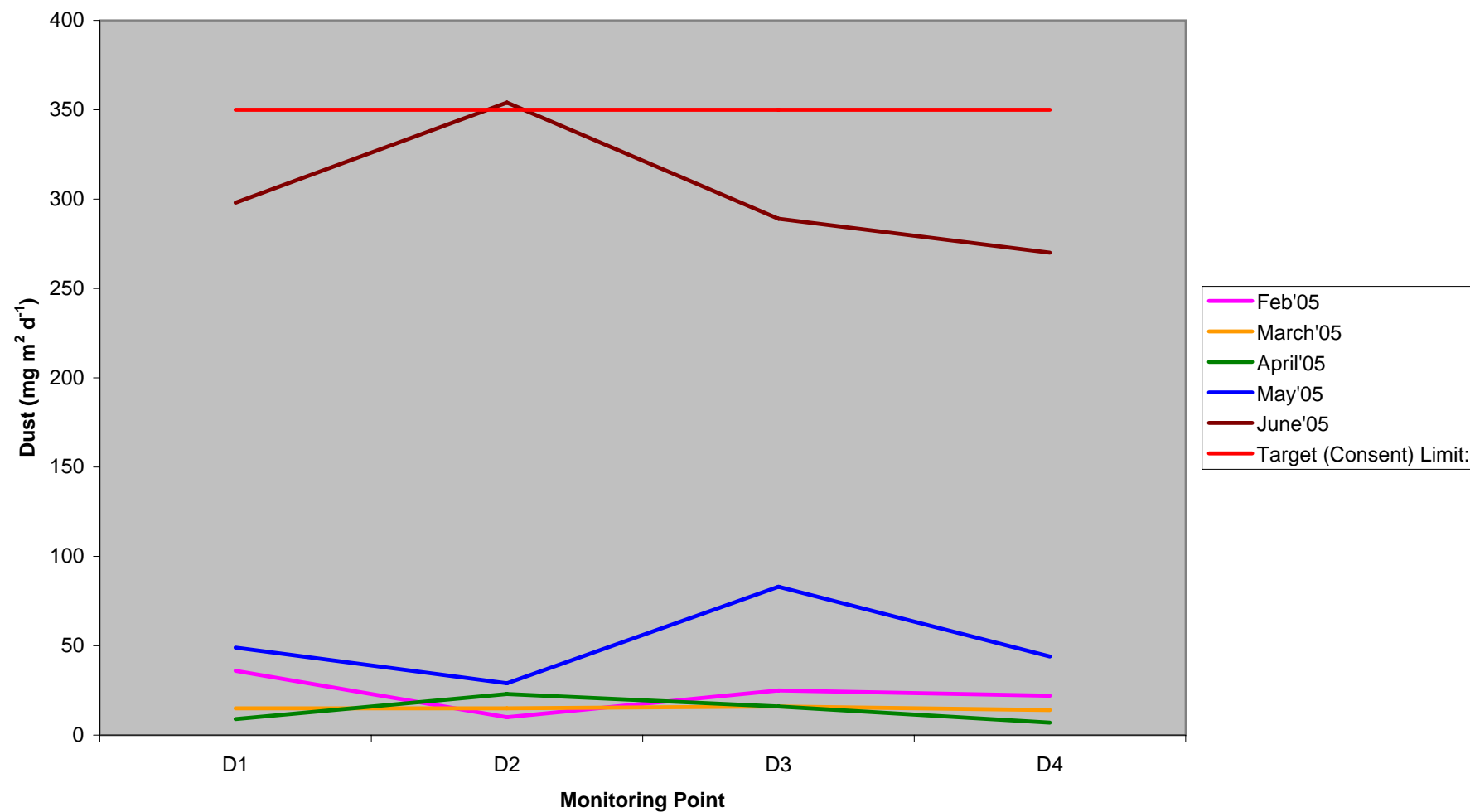
Noise Monitoring Record Sheet										no... 1 of 1			
Conducted by						Approved by							
Name: Leslie Finnegan						Signed		Name: Leslie Finnegan				Signed	
Determinant Results													
Location	Air Temp.	Start Date	Time	Duration	Serial No.	Wind		Results dB			*Comments		
						Speed (m/s)*	Direction (Degrees)	L _{Aeq}	L _{Amin}	L _{Amax}			
Action Limit								60					
Target Limit								65					
N1													
N1													
N1													
N1													
N1													
N1													
N1													
N1													
N1													
N1													
N1													
N2													
N2													
N2													
N2													
N2													
N2													
N2													
N2													
N2													
N2													
N2													
N2													
N2													

* Wind speeds in excess of 5 m/s negatively impact noise readings (as per EPA Guidance Note on Noise Measurement).

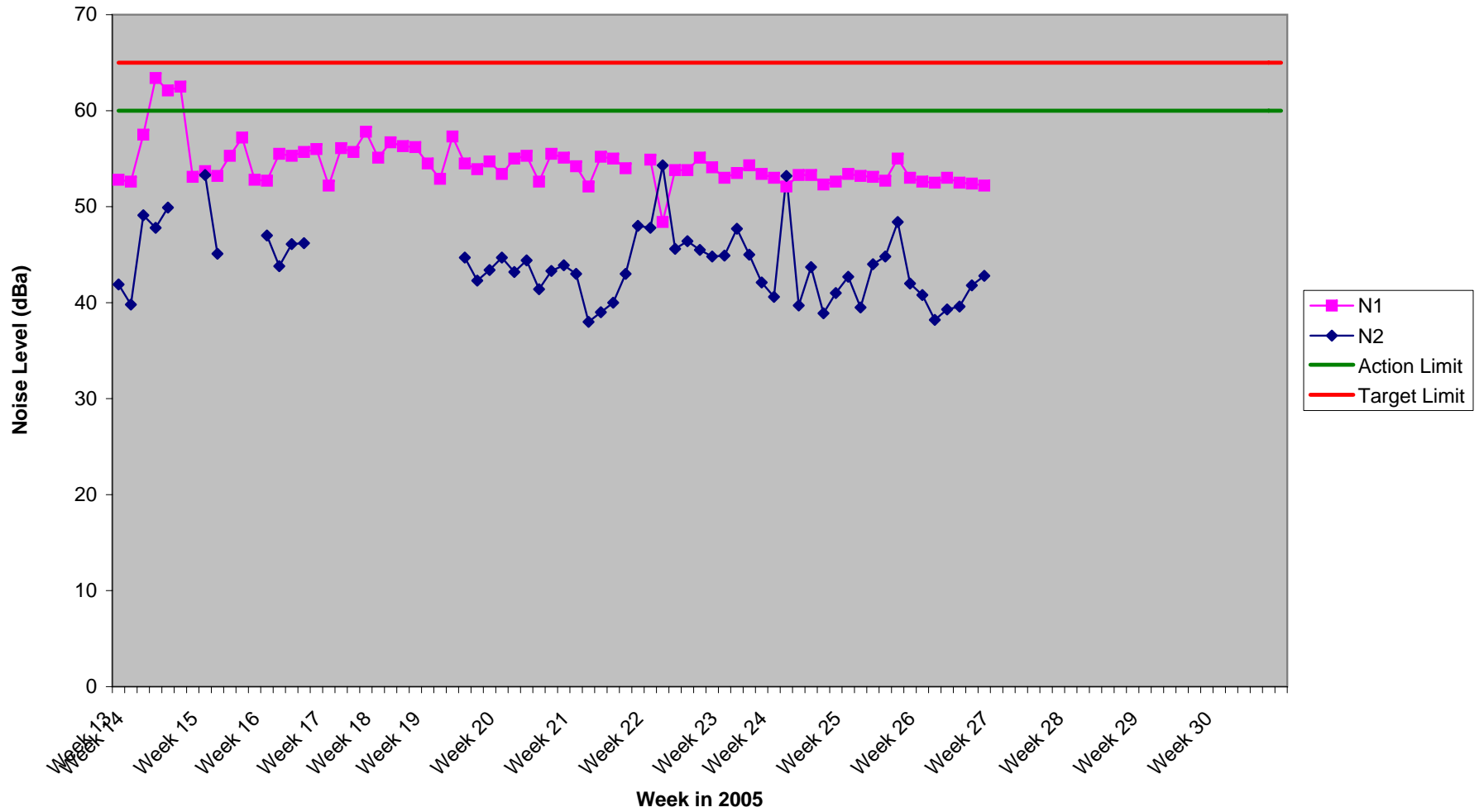
Dust Monitoring Record Sheet				no... 1 of 1			
Conducted by			Approved by				
Name: Leslie Finnegan		Signed		Name: Leslie Finnegan		Signed	
Determinant Results							
	Date Positioned	Date Removed	Ref. Number	Date Dispatched	Date Returned	Weight (mg/sq.m/day)	Comments
Target (Consent) Limit: 350 mg m² d⁻¹ on as a 30 day average							
D1	31/01/2005	02/03/2005	59793	02/03/2005	24/03/2005	36	
D2	31/01/2005	02/03/2005	59794	02/03/2005	24/03/2005	10	
D3	31/01/2005	02/03/2005	59795	02/03/2005	24/03/2005	25	
D4	31/01/2005	02/03/2005	59796	02/03/2005	24/03/2005	22	
D1	02/03/2005	01/04/2005	61907	01/04/2005	08/04/2005	15	
D2	02/03/2005	01/04/2005	61908	01/04/2005	08/04/2005	15	
D3	02/03/2005	01/04/2005	61909	01/04/2005	08/04/2005	16	
D4	02/03/2005	01/04/2005	61910	01/04/2005	08/04/2005	14	
D1	01/04/2005	04/05/2005	64400	04/05/2005	09/05/2005	9	
D2	01/04/2005	04/05/2005	64401	04/05/2005	09/05/2005	23	
D3	01/04/2005	04/05/2005	64402	04/05/2005	09/05/2005	16	
D4	01/04/2005	04/05/2005	64403	04/05/2005	09/05/2005	7	
D1	04/05/2005	07/06/2005	67524	07/06/2005	10/06/2006	49	
D2	04/05/2005	07/06/2005	67525	07/06/2005	10/06/2006	29	
D3	04/05/2005	07/06/2005	67526	07/06/2005	10/06/2006	83	
D4	04/05/2005	07/06/2005	67527	07/06/2005	10/06/2006	44	
D1	07/06/2005	13/07/2005	70512	13/07/2005	18/07/2005	298	
D2	07/06/2005	13/07/2005	70513	13/07/2005	18/07/2005	354	
D3	07/06/2005	13/07/2005	70514	13/07/2005	18/07/2005	289	
D4	07/06/2005	13/07/2005	70515	13/07/2005	18/07/2005	270	

Monitoring Points are numbered clockwise through the Cardinal Marks (N, E, S, W)
Monitoring Results will be presented monthly

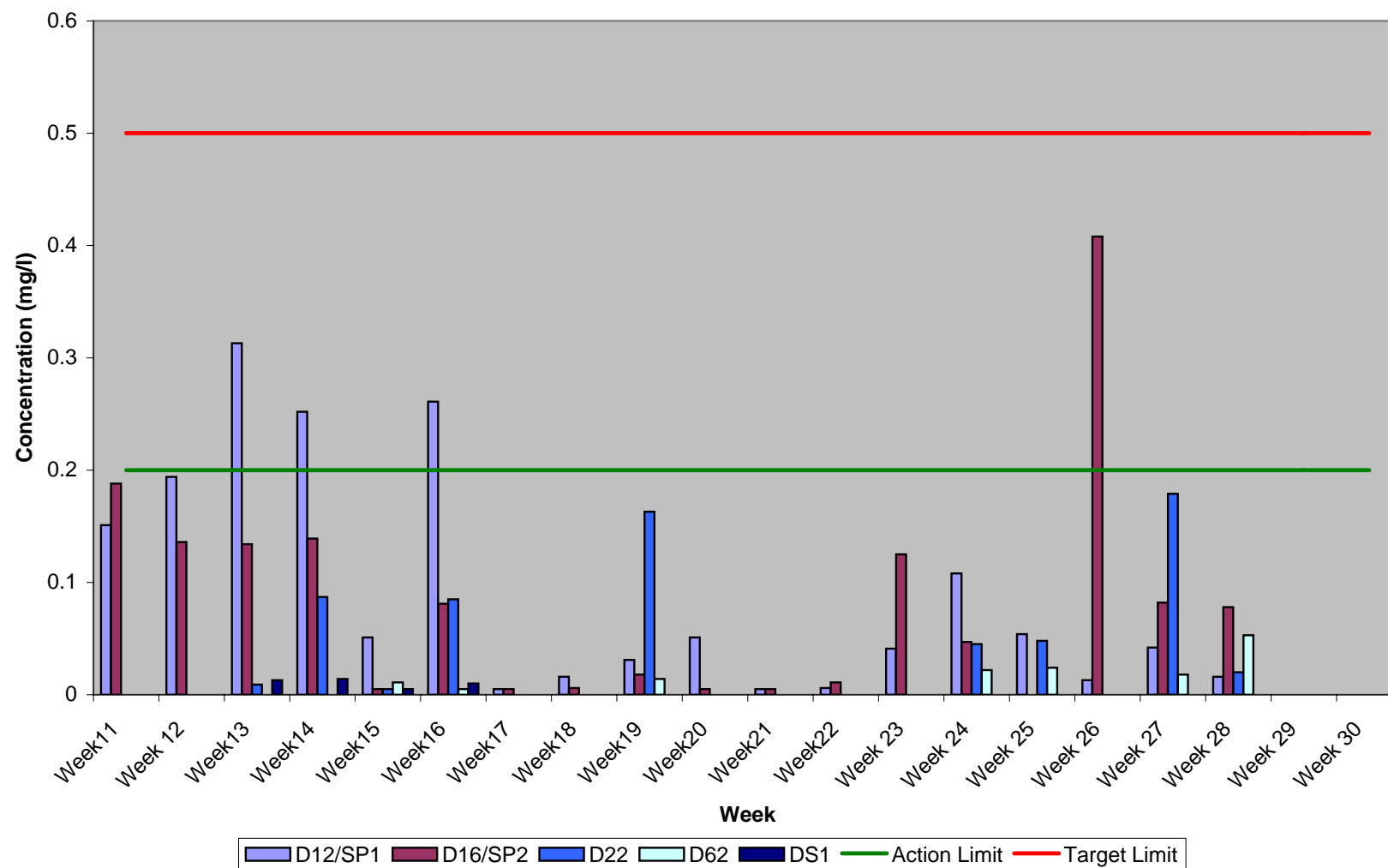
Dust Compiled Results 2005



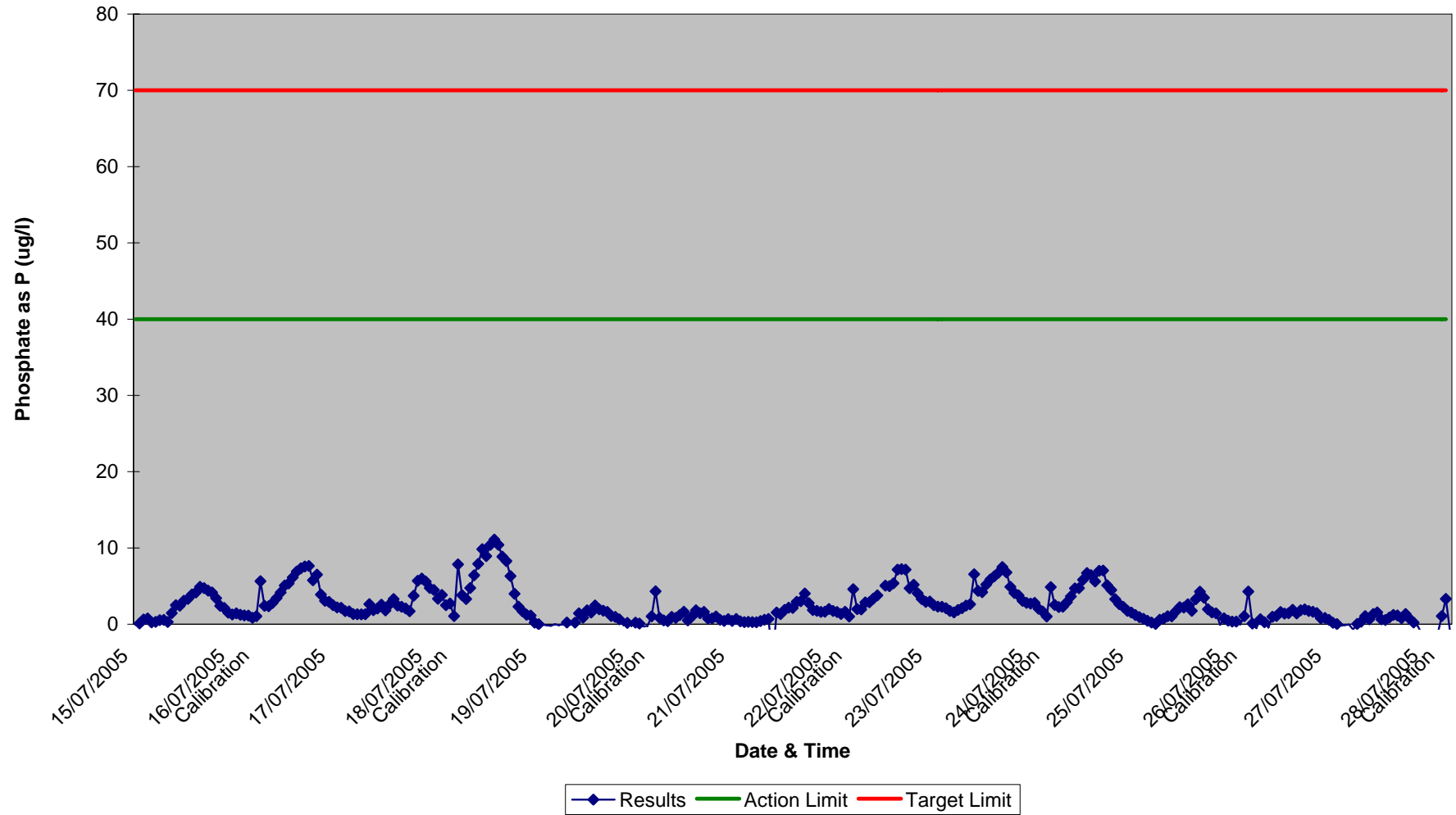
Noise Monitoring Compiled Results 2005



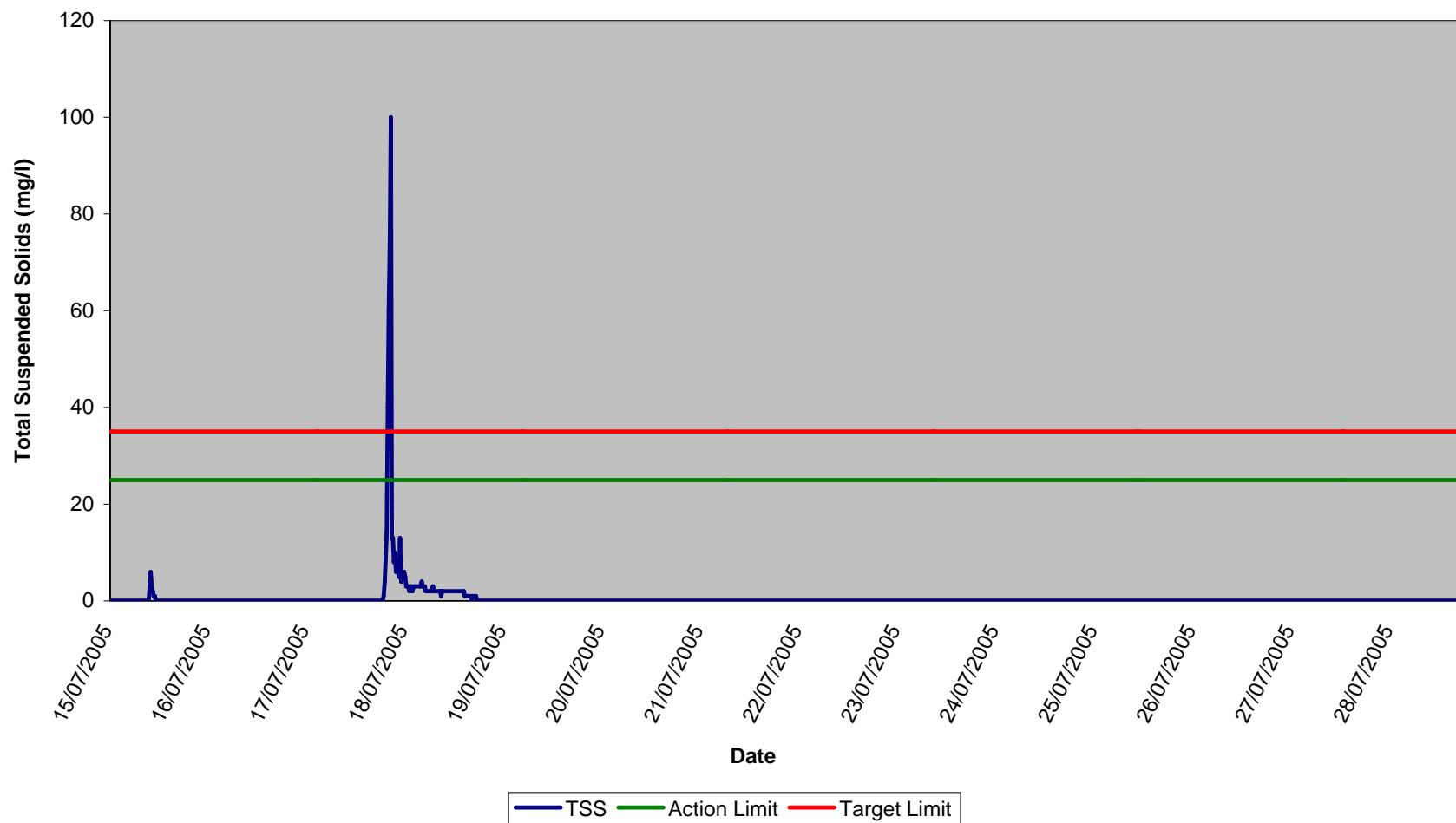
Ammonia as NH₃-N, Compiled Results 2005



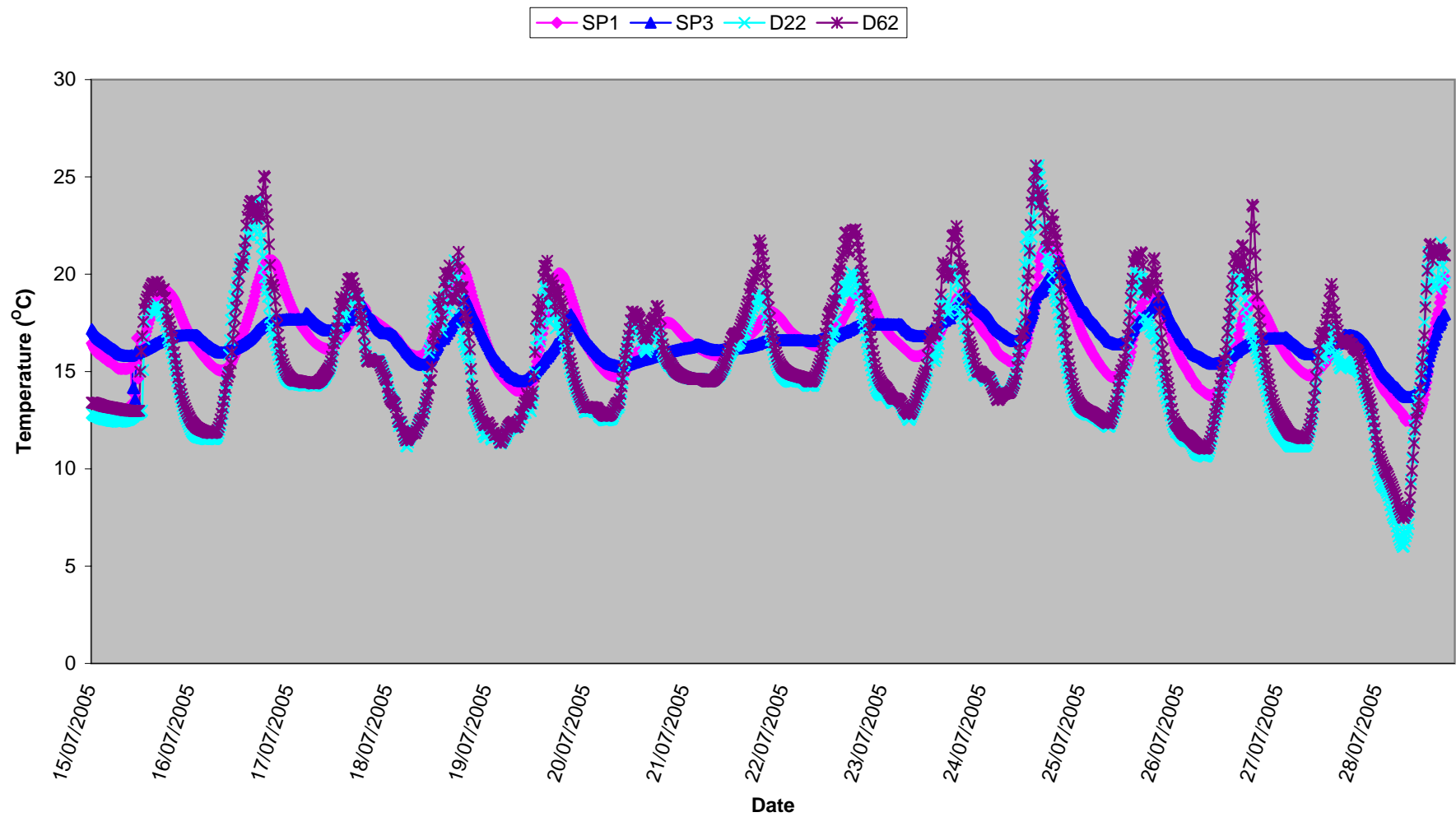
Surface Water (SP1)
Orthophosphate, Week 29/30 2005



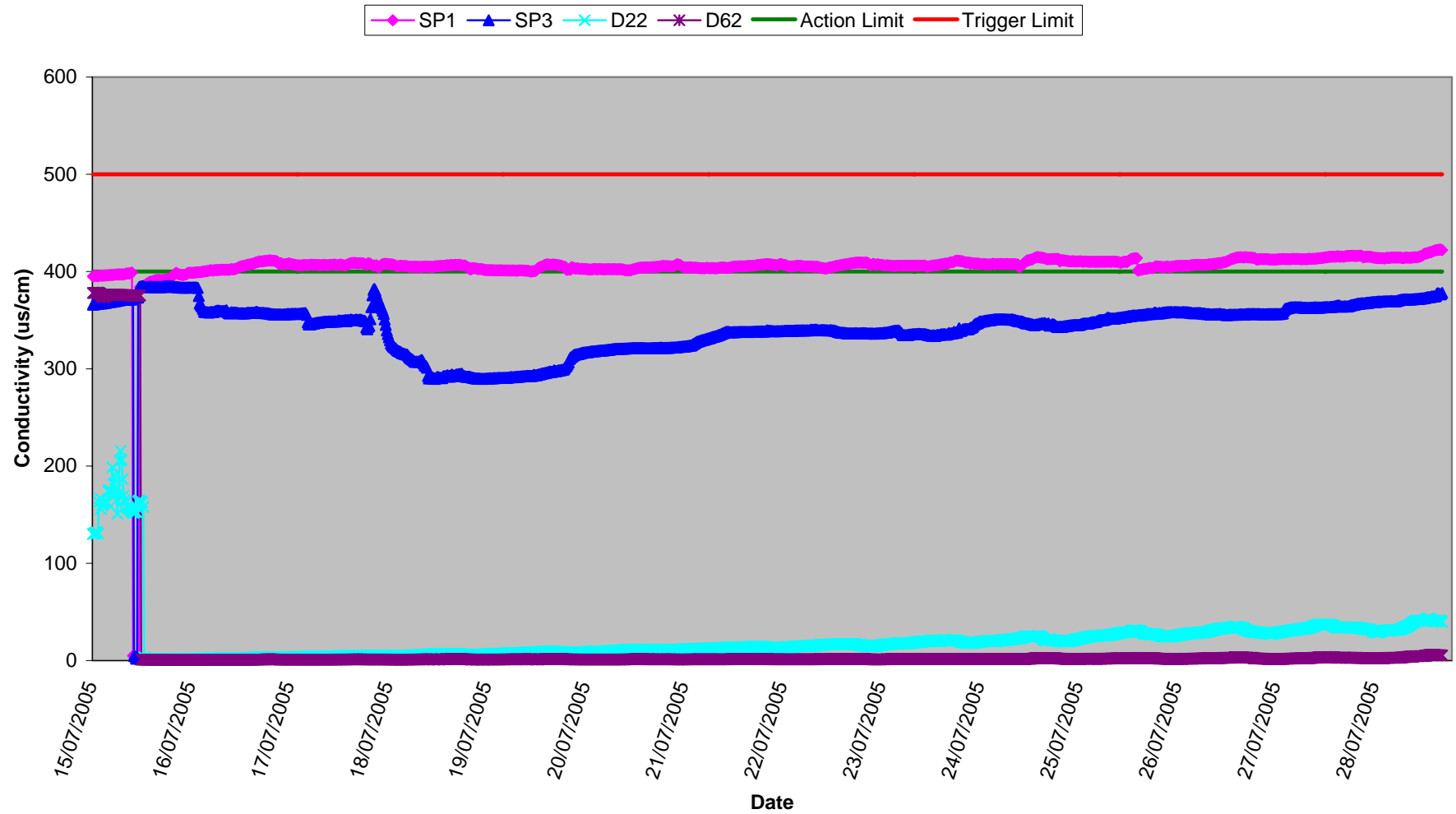
Surface Water (SP1)
Total Suspended Solids, Weeks 29/30 2005



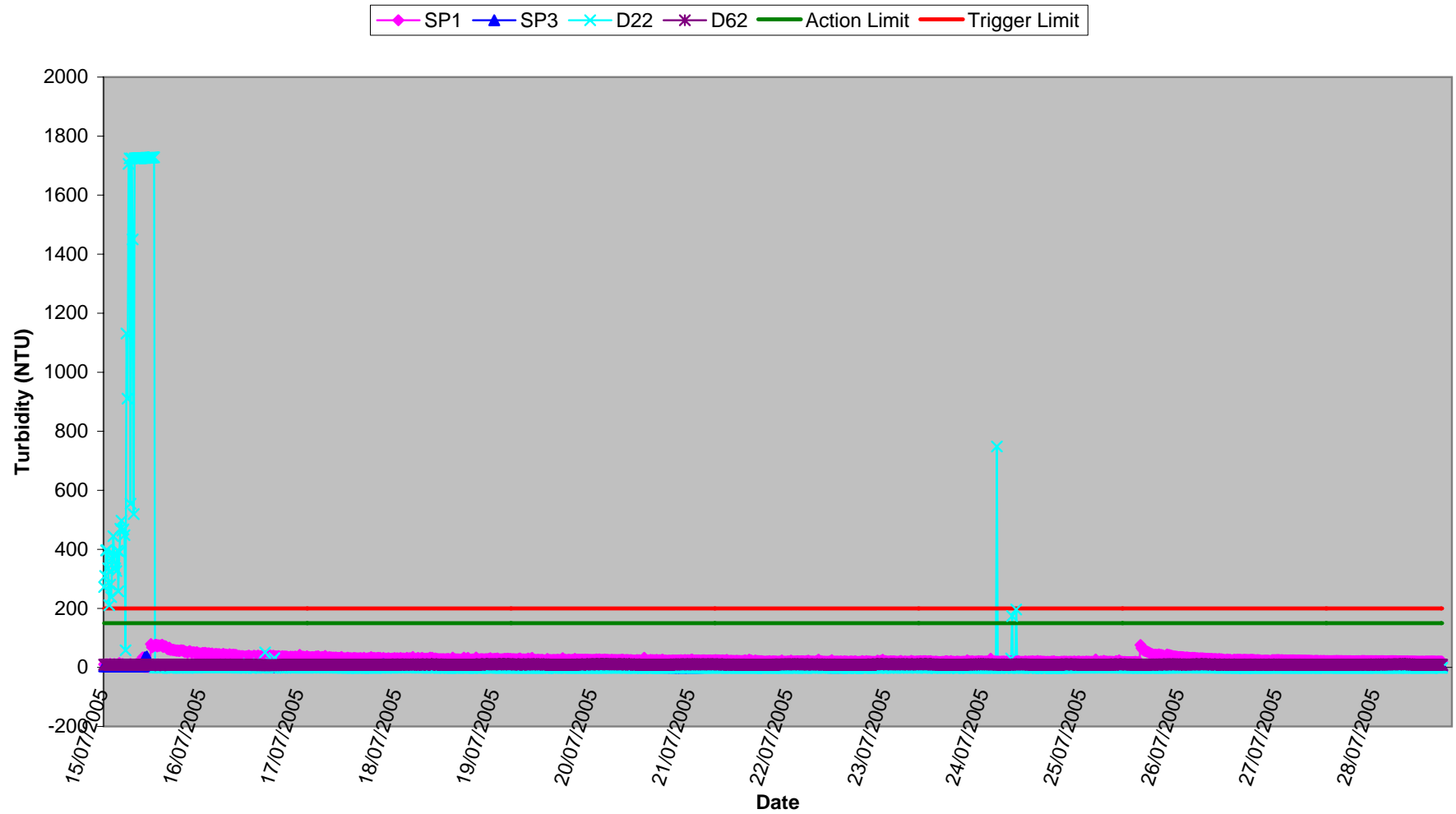
Surface Waters
Temperature, Weeks 29/30 2005



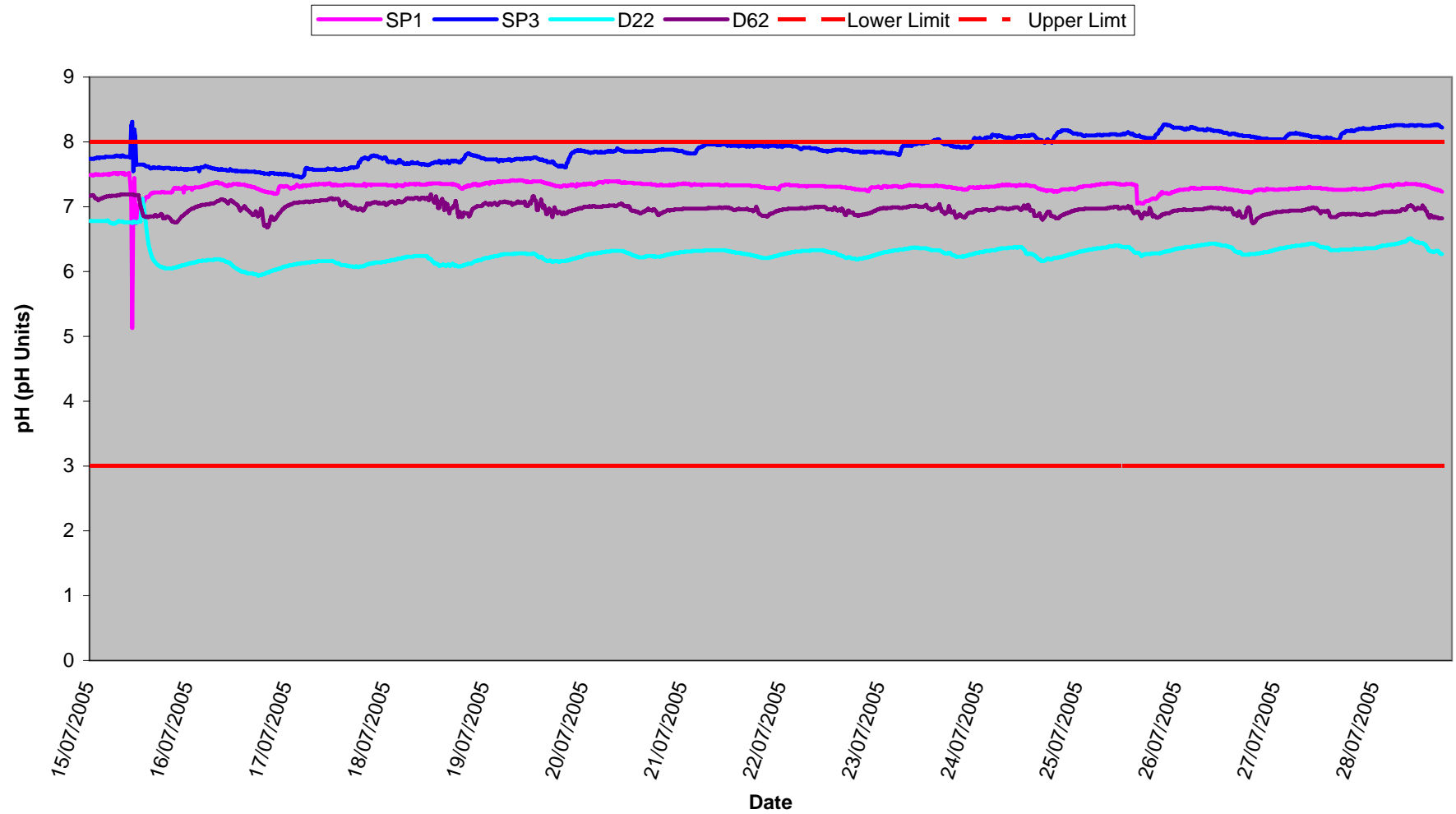
Surface Waters
Conductivity, Weeks 29/30 2005



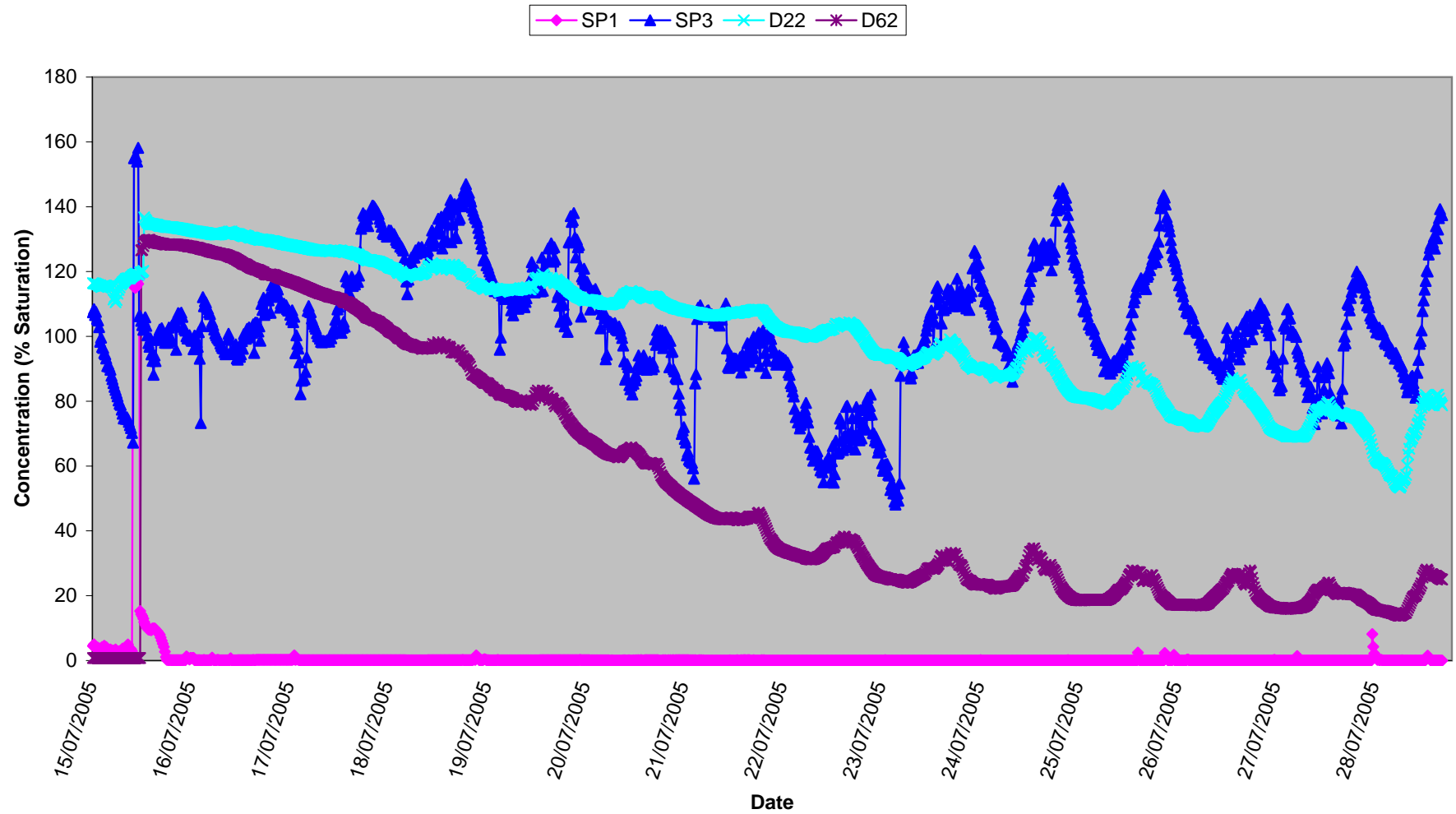
**Surface Waters
Turbidity, Weeks 29/30 2005**



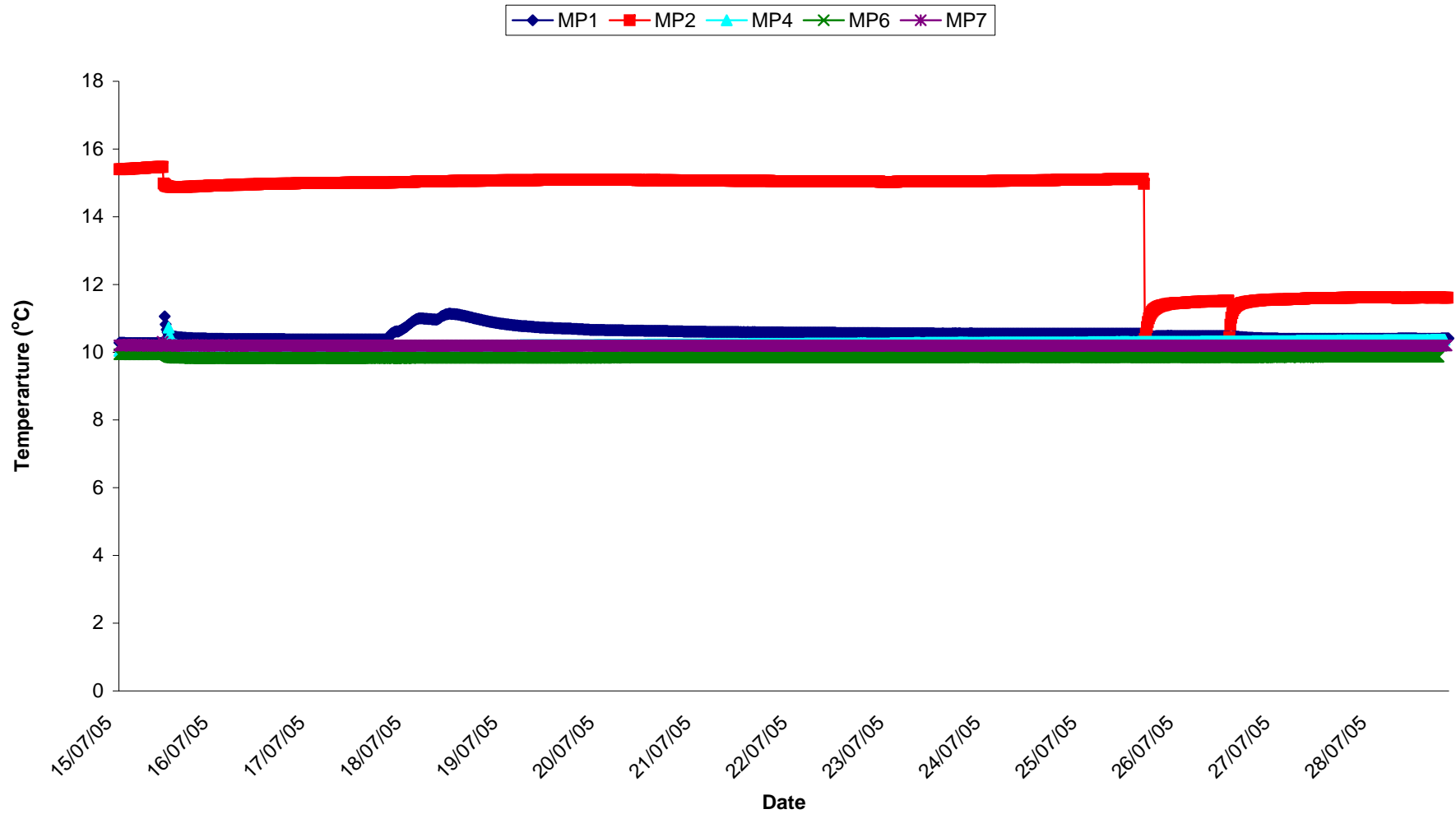
Surface Waters
pH, Weeks 29/30 2005



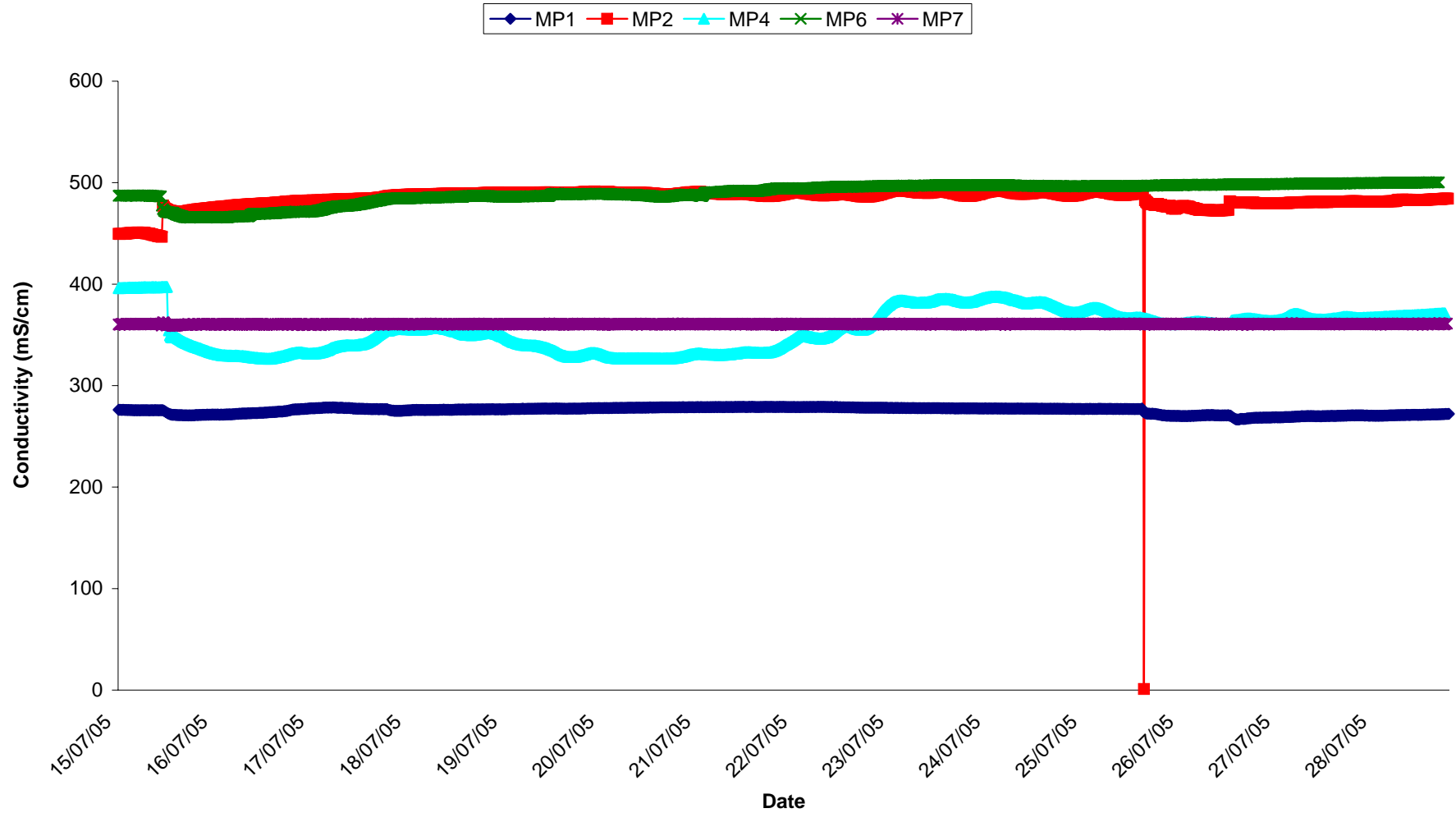
Surface Waters
Dissolved Oxygen, Weeks 29/30 2005



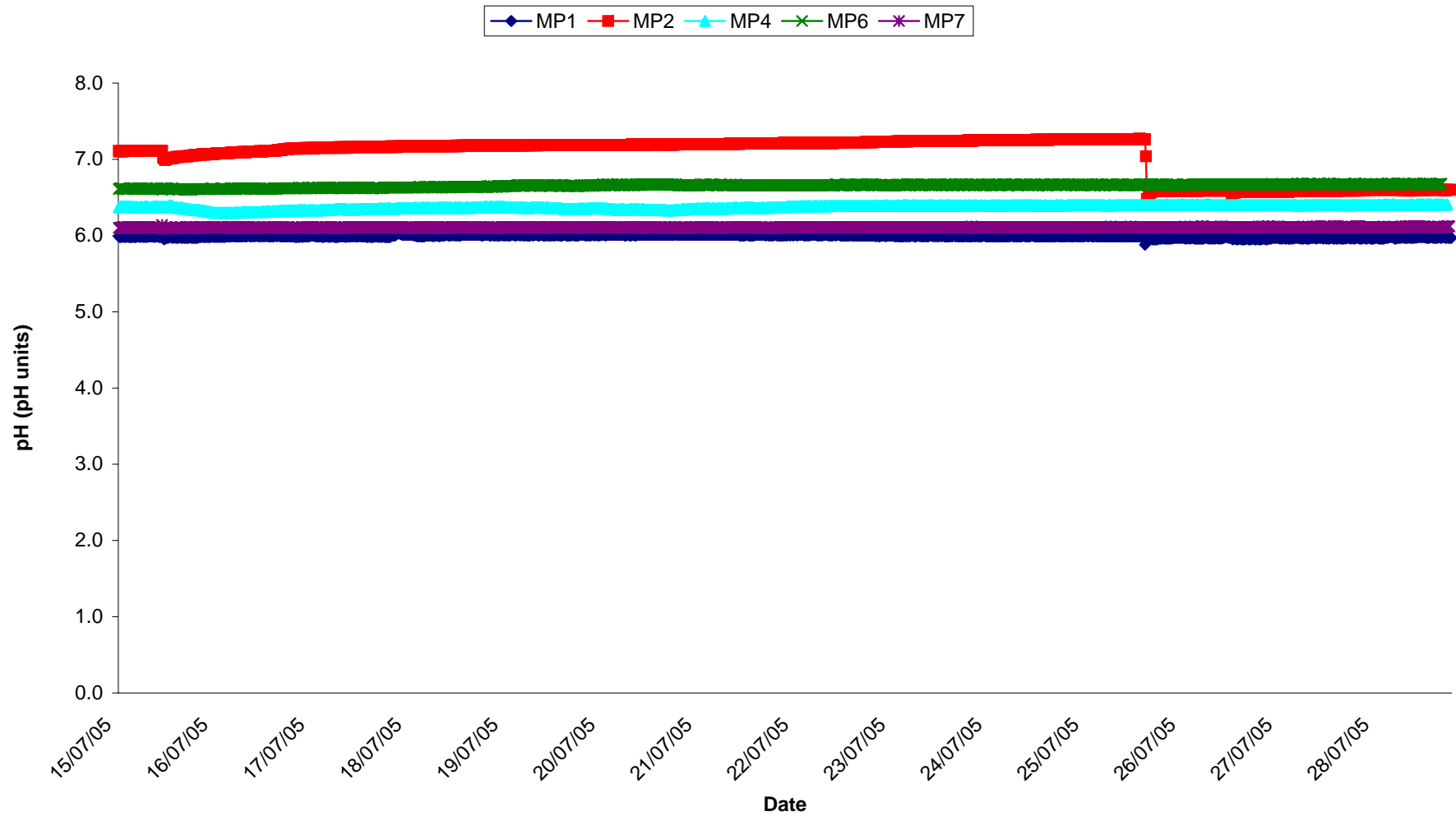
Groundwaters
Temp, Weeks 29/30 2005



Groundwaters
Conductivity, Weeks 29/30 2005



**Groundwaters
pH, Weeks 29/30 2005**



	L _{avg}				
	N1	N2	Action Limit	Target Limit	
Week 13	53	42	60	65	
Week 14	53	40	60	65	
	58	49	60	65	
	63	48	60	65	
	62	50	60	65	
	63		60	65	
	53		60	65	
Week 15	54	53	60	65	
	53	45	60	65	
	55		60	65	
	57		60	65	
	53		60	65	
Week 16	53	47	60	65	
	56	44	60	65	
	55	46	60	65	
	56	46	60	65	
	56		60	65	
Week 17	52	52	60	65	
	56		60	65	
	56		60	65	
	56		60	65	
Week 18	55		60	65	
	57		60	65	
	56		60	65	
	56		60	65	
Week 19	45	60	60	65	
	53		60	65	
	57		60	65	
	55	45	60	65	
	54	42	60	65	
	55	43	60	65	
Week 20	53	45	60	65	
	55	43	60	65	
	55	44	60	65	
	53	41	60	65	
	56	43	60	65	
	55	44	60	65	
Week 21	54	43	60	65	
	52	38	60	65	
	55	39	60	65	
	55	40	60	65	
	54	43	60	65	
Week 22	55	48	60	65	
	48	54	60	65	
	54	46	60	65	
	54	46	60	65	
	54	45	60	65	
Week 23	53	45	60	65	
	54	48	60	65	
	54	45	60	65	
	53	42	60	65	
Week 24	53	41	60	65	
	52	53	60	65	
	53	40	60	65	
	53	44	60	65	
	52	39	60	65	
	53	41	60	65	
Week 25	53	43	60	65	
	53	40	60	65	
	53	44	60	65	
	53	45	60	65	
	55	48	60	65	
	53	42	60	65	
Week 26	53	38	60	65	
	53	39	60	65	
	53	40	60	65	
	52	42	60	65	
	52	43	60	65	
Week 27			60	65	
			60	65	
			60	65	
			60	65	
			60	65	
Week 28			60	65	
			60	65	
			60	65	
			60	65	
			60	65	
Week 29			60	65	
			60	65	
			60	65	
			60	65	
			60	65	
Week 30			60	65	
			60	65	
			60	65	
			60	65	
			60	65	

	D12/SP1	D16/SP2	D22	D62	DS1
15/03/2005	0.151	0.188			
23/03/2005	0.194	0.136			
30/03/2005	0.137	0.269	0.007		0.011
31/03/2005	0.313	0.134	0.009		0.013
01/04/2005	0.133	0.086	0.017		0.017
04/04/2005	0.252	0.139	0.087		0.014
06/04/2005	0.064	0.033			0.005
11/04/2005	0.051	0.005	0.005	0.011	0.005
18/04/2005	0.261	0.081	0.085	0.005	0.01
25/04/2005	0.005	0.005			
03/05/2005	0.016	0.006			

[illegible]

[illegible]

Week 28	Week 29	Week 30
0.016		
0.078		
0.02		
0.053		
0.2	0.2	0.2
0.5	0.5	0.5

Total Suspended Solids Monitoring Record Sheet			of ...
Conducted by		Approved by	
Name	Signed	Name	

Date	TSS	Action Limit	Target Limit	
15/07/05	0	25	35	15/07/2005 00:00
	0	25	35	15/07/2005 00:15
	0	25	35	15/07/2005 00:30
	0	25	35	15/07/2005 00:45
	0	25	35	15/07/2005 01:00
	0	25	35	15/07/2005 01:15
	0	25	35	15/07/2005 01:30
	0	25	35	15/07/2005 01:45
	0	25	35	15/07/2005 02:00
	0	25	35	15/07/2005 02:15
	0	25	35	15/07/2005 02:30
	0	25	35	15/07/2005 02:45
	0	25	35	15/07/2005 03:00
	0	25	35	15/07/2005 03:15
	0	25	35	15/07/2005 03:30
	0	25	35	15/07/2005 03:45
	0	25	35	15/07/2005 04:00
	0	25	35	15/07/2005 04:15
	0	25	35	15/07/2005 04:30
	0	25	35	15/07/2005 04:45
	0	25	35	15/07/2005 05:00
	0	25	35	15/07/2005 05:15
	0	25	35	15/07/2005 05:30
	0	25	35	15/07/2005 05:45
	0	25	35	15/07/2005 06:00
	0	25	35	15/07/2005 06:15
	0	25	35	15/07/2005 06:30
	0	25	35	15/07/2005 06:45
	0	25	35	15/07/2005 07:00
	0	25	35	15/07/2005 07:15
	0	25	35	15/07/2005 07:30
	0	25	35	15/07/2005 07:45
	0	25	35	15/07/2005 08:00
	0	25	35	15/07/2005 08:15
	0	25	35	15/07/2005 08:30
	0	25	35	15/07/2005 08:45
	0	25	35	15/07/2005 09:00
	0	25	35	15/07/2005 09:15
	3	25	35	15/07/2005 09:30
	6	25	35	15/07/2005 09:45
	3	25	35	15/07/2005 10:00
	2	25	35	15/07/2005 10:15
	1	25	35	15/07/2005 10:30
	1	25	35	15/07/2005 10:45
	0	25	35	15/07/2005 11:00
	0	25	35	15/07/2005 11:15
	0	25	35	15/07/2005 11:30
	0	25	35	15/07/2005 11:45
	0	25	35	15/07/2005 12:00
	0	25	35	15/07/2005 12:15
	0	25	35	15/07/2005 12:30
	0	25	35	15/07/2005 12:45
	0	25	35	15/07/2005 13:00
	0	25	35	15/07/2005 13:15

	0	25	35	15/07/2005 13:30
	0	25	35	15/07/2005 13:45
	0	25	35	15/07/2005 14:00
	0	25	35	15/07/2005 14:15
	0	25	35	15/07/2005 14:30
	0	25	35	15/07/2005 14:45
	0	25	35	15/07/2005 15:00
	0	25	35	15/07/2005 15:15
	0	25	35	15/07/2005 15:30
	0	25	35	15/07/2005 15:45
	0	25	35	15/07/2005 16:00
	0	25	35	15/07/2005 16:15
	0	25	35	15/07/2005 16:30
	0	25	35	15/07/2005 16:45
	0	25	35	15/07/2005 17:00
	0	25	35	15/07/2005 17:15
	0	25	35	15/07/2005 17:30
	0	25	35	15/07/2005 17:45
	0	25	35	15/07/2005 18:00
	0	25	35	15/07/2005 18:15
	0	25	35	15/07/2005 18:30
	0	25	35	15/07/2005 18:45
	0	25	35	15/07/2005 19:00
	0	25	35	15/07/2005 19:15
	0	25	35	15/07/2005 19:30
	0	25	35	15/07/2005 19:45
	0	25	35	15/07/2005 20:00
	0	25	35	15/07/2005 20:15
	0	25	35	15/07/2005 20:30
	0	25	35	15/07/2005 20:45
	0	25	35	15/07/2005 21:00
	0	25	35	15/07/2005 21:15
	0	25	35	15/07/2005 21:30
	0	25	35	15/07/2005 21:45
	0	25	35	15/07/2005 22:00
	0	25	35	15/07/2005 22:15
	0	25	35	15/07/2005 22:30
	0	25	35	15/07/2005 22:45
	0	25	35	15/07/2005 23:00
	0	25	35	15/07/2005 23:15
	0	25	35	15/07/2005 23:30
	0	25	35	15/07/2005 23:45
16/07/05	0	25	35	16/07/2005 00:00
	0	25	35	16/07/2005 00:15
	0	25	35	16/07/2005 00:30
	0	25	35	16/07/2005 00:45
	0	25	35	16/07/2005 01:00
	0	25	35	16/07/2005 01:15
	0	25	35	16/07/2005 01:30
	0	25	35	16/07/2005 01:45
	0	25	35	16/07/2005 02:00
	0	25	35	16/07/2005 02:15
	0	25	35	16/07/2005 02:30
	0	25	35	16/07/2005 02:45
	0	25	35	16/07/2005 03:00
	0	25	35	16/07/2005 03:15
	0	25	35	16/07/2005 03:30
	0	25	35	16/07/2005 03:45
	0	25	35	16/07/2005 04:00

0	25	35	16/07/2005 04:15
0	25	35	16/07/2005 04:30
0	25	35	16/07/2005 04:45
0	25	35	16/07/2005 05:00
0	25	35	16/07/2005 05:15
0	25	35	16/07/2005 05:30
0	25	35	16/07/2005 05:45
0	25	35	16/07/2005 06:00
0	25	35	16/07/2005 06:15
0	25	35	16/07/2005 06:30
0	25	35	16/07/2005 06:45
0	25	35	16/07/2005 07:00
0	25	35	16/07/2005 07:15
0	25	35	16/07/2005 07:30
0	25	35	16/07/2005 07:45
0	25	35	16/07/2005 08:00
0	25	35	16/07/2005 08:15
0	25	35	16/07/2005 08:30
0	25	35	16/07/2005 08:45
0	25	35	16/07/2005 09:00
0	25	35	16/07/2005 09:15
0	25	35	16/07/2005 09:30
0	25	35	16/07/2005 09:45
0	25	35	16/07/2005 10:00
0	25	35	16/07/2005 10:15
0	25	35	16/07/2005 10:30
0	25	35	16/07/2005 10:45
0	25	35	16/07/2005 11:00
0	25	35	16/07/2005 11:15
0	25	35	16/07/2005 11:30
0	25	35	16/07/2005 11:45
0	25	35	16/07/2005 12:00
0	25	35	16/07/2005 12:15
0	25	35	16/07/2005 12:30
0	25	35	16/07/2005 12:45
0	25	35	16/07/2005 13:00
0	25	35	16/07/2005 13:15
0	25	35	16/07/2005 13:30
0	25	35	16/07/2005 13:45
0	25	35	16/07/2005 14:00
0	25	35	16/07/2005 14:15
0	25	35	16/07/2005 14:30
0	25	35	16/07/2005 14:45
0	25	35	16/07/2005 15:00
0	25	35	16/07/2005 15:15
0	25	35	16/07/2005 15:30
0	25	35	16/07/2005 15:45
0	25	35	16/07/2005 16:00
0	25	35	16/07/2005 16:15
0	25	35	16/07/2005 16:30
0	25	35	16/07/2005 16:45
0	25	35	16/07/2005 17:00
0	25	35	16/07/2005 17:15
0	25	35	16/07/2005 17:30
0	25	35	16/07/2005 17:45
0	25	35	16/07/2005 18:00
0	25	35	16/07/2005 18:15
0	25	35	16/07/2005 18:30
0	25	35	16/07/2005 18:45

	0	25	35	16/07/2005 19:00
	0	25	35	16/07/2005 19:15
	0	25	35	16/07/2005 19:30
	0	25	35	16/07/2005 19:45
	0	25	35	16/07/2005 20:00
	0	25	35	16/07/2005 20:15
	0	25	35	16/07/2005 20:30
	0	25	35	16/07/2005 20:45
	0	25	35	16/07/2005 21:00
	0	25	35	16/07/2005 21:15
	0	25	35	16/07/2005 21:30
	0	25	35	16/07/2005 21:45
	0	25	35	16/07/2005 22:00
	0	25	35	16/07/2005 22:15
	0	25	35	16/07/2005 22:30
	0	25	35	16/07/2005 22:45
	0	25	35	16/07/2005 23:00
	0	25	35	16/07/2005 23:15
	0	25	35	16/07/2005 23:30
	0	25	35	16/07/2005 23:45
17/07/05	0	25	35	17/07/2005 00:00
	0	25	35	17/07/2005 00:15
	0	25	35	17/07/2005 00:30
	0	25	35	17/07/2005 00:45
	0	25	35	17/07/2005 01:00
	0	25	35	17/07/2005 01:15
	0	25	35	17/07/2005 01:30
	0	25	35	17/07/2005 01:45
	0	25	35	17/07/2005 02:00
	0	25	35	17/07/2005 02:15
	0	25	35	17/07/2005 02:30
	0	25	35	17/07/2005 02:45
	0	25	35	17/07/2005 03:00
	0	25	35	17/07/2005 03:15
	0	25	35	17/07/2005 03:30
	0	25	35	17/07/2005 03:45
	0	25	35	17/07/2005 04:00
	0	25	35	17/07/2005 04:15
	0	25	35	17/07/2005 04:30
	0	25	35	17/07/2005 04:45
	0	25	35	17/07/2005 05:00
	0	25	35	17/07/2005 05:15
	0	25	35	17/07/2005 05:30
	0	25	35	17/07/2005 05:45
	0	25	35	17/07/2005 06:00
	0	25	35	17/07/2005 06:15
	0	25	35	17/07/2005 06:30
	0	25	35	17/07/2005 06:45
	0	25	35	17/07/2005 07:00
	0	25	35	17/07/2005 07:15
	0	25	35	17/07/2005 07:30
	0	25	35	17/07/2005 07:45
	0	25	35	17/07/2005 08:00
	0	25	35	17/07/2005 08:15
	0	25	35	17/07/2005 08:30
	0	25	35	17/07/2005 08:45
	0	25	35	17/07/2005 09:00
	0	25	35	17/07/2005 09:15
	0	25	35	17/07/2005 09:30

	0	25	35	17/07/2005 09:45
	0	25	35	17/07/2005 10:00
	0	25	35	17/07/2005 10:15
	0	25	35	17/07/2005 10:30
	0	25	35	17/07/2005 10:45
	0	25	35	17/07/2005 11:00
	0	25	35	17/07/2005 11:15
	0	25	35	17/07/2005 11:30
	0	25	35	17/07/2005 11:45
	0	25	35	17/07/2005 12:00
	0	25	35	17/07/2005 12:15
	0	25	35	17/07/2005 12:30
	0	25	35	17/07/2005 12:45
	0	25	35	17/07/2005 13:00
	0	25	35	17/07/2005 13:15
	0	25	35	17/07/2005 13:30
	0	25	35	17/07/2005 13:45
	0	25	35	17/07/2005 14:00
	0	25	35	17/07/2005 14:15
	0	25	35	17/07/2005 14:30
	0	25	35	17/07/2005 14:45
	0	25	35	17/07/2005 15:00
	0	25	35	17/07/2005 15:15
	0	25	35	17/07/2005 15:30
	0	25	35	17/07/2005 15:45
	0	25	35	17/07/2005 16:00
	0	25	35	17/07/2005 16:15
	0	25	35	17/07/2005 16:30
	0	25	35	17/07/2005 16:45
	0	25	35	17/07/2005 17:00
	0	25	35	17/07/2005 17:15
	0	25	35	17/07/2005 17:30
	0	25	35	17/07/2005 17:45
	0	25	35	17/07/2005 18:00
	0	25	35	17/07/2005 18:15
	1	25	35	17/07/2005 18:30
	4	25	35	17/07/2005 18:45
	9	25	35	17/07/2005 19:00
	14	25	35	17/07/2005 19:15
	40	25	35	17/07/2005 19:30
	60	25	35	17/07/2005 19:45
	75	25	35	17/07/2005 20:00
	100	25	35	17/07/2005 20:15
	13	25	35	17/07/2005 20:30
	13	25	35	17/07/2005 20:45
	8	25	35	17/07/2005 21:00
	10	25	35	17/07/2005 21:15
	6	25	35	17/07/2005 21:30
	7	25	35	17/07/2005 21:45
	6	25	35	17/07/2005 22:00
	5	25	35	17/07/2005 22:15
	13	25	35	17/07/2005 22:30
	4	25	35	17/07/2005 22:45
	5	25	35	17/07/2005 23:00
	5	25	35	17/07/2005 23:15
	6	25	35	17/07/2005 23:30
	5	25	35	17/07/2005 23:45
18/07/05	3	25	35	18/07/2005 00:00
	3	25	35	18/07/2005 00:15

3	25	35	18/07/2005 00:30
2	25	35	18/07/2005 00:45
3	25	35	18/07/2005 01:00
3	25	35	18/07/2005 01:15
2	25	35	18/07/2005 01:30
3	25	35	18/07/2005 01:45
3	25	35	18/07/2005 02:00
3	25	35	18/07/2005 02:15
3	25	35	18/07/2005 02:30
3	25	35	18/07/2005 02:45
3	25	35	18/07/2005 03:00
3	25	35	18/07/2005 03:15
3	25	35	18/07/2005 03:30
4	25	35	18/07/2005 03:45
3	25	35	18/07/2005 04:00
3	25	35	18/07/2005 04:15
3	25	35	18/07/2005 04:30
2	25	35	18/07/2005 04:45
2	25	35	18/07/2005 05:00
2	25	35	18/07/2005 05:15
2	25	35	18/07/2005 05:30
2	25	35	18/07/2005 05:45
2	25	35	18/07/2005 06:00
2	25	35	18/07/2005 06:15
3	25	35	18/07/2005 06:30
2	25	35	18/07/2005 06:45
2	25	35	18/07/2005 07:00
2	25	35	18/07/2005 07:15
2	25	35	18/07/2005 07:30
2	25	35	18/07/2005 07:45
2	25	35	18/07/2005 08:00
2	25	35	18/07/2005 08:15
1	25	35	18/07/2005 08:30
2	25	35	18/07/2005 08:45
2	25	35	18/07/2005 09:00
2	25	35	18/07/2005 09:15
2	25	35	18/07/2005 09:30
2	25	35	18/07/2005 09:45
2	25	35	18/07/2005 10:00
2	25	35	18/07/2005 10:15
2	25	35	18/07/2005 10:30
2	25	35	18/07/2005 10:45
2	25	35	18/07/2005 11:00
2	25	35	18/07/2005 11:15
2	25	35	18/07/2005 11:30
2	25	35	18/07/2005 11:45
2	25	35	18/07/2005 12:00
2	25	35	18/07/2005 12:15
2	25	35	18/07/2005 12:30
2	25	35	18/07/2005 12:45
2	25	35	18/07/2005 13:00
2	25	35	18/07/2005 13:15
2	25	35	18/07/2005 13:30
2	25	35	18/07/2005 13:45
2	25	35	18/07/2005 14:00
1	25	35	18/07/2005 14:15
1	25	35	18/07/2005 14:30
1	25	35	18/07/2005 14:45
1	25	35	18/07/2005 15:00

	1	25	35	18/07/2005 15:15
	1	25	35	18/07/2005 15:30
	1	25	35	18/07/2005 15:45
	0	25	35	18/07/2005 16:00
	1	25	35	18/07/2005 16:15
	1	25	35	18/07/2005 16:30
	1	25	35	18/07/2005 16:45
	1	25	35	18/07/2005 17:00
	0	25	35	18/07/2005 17:15
	0	25	35	18/07/2005 17:30
	0	25	35	18/07/2005 17:45
	0	25	35	18/07/2005 18:00
	0	25	35	18/07/2005 18:15
	0	25	35	18/07/2005 18:30
	0	25	35	18/07/2005 18:45
	0	25	35	18/07/2005 19:00
	0	25	35	18/07/2005 19:15
	0	25	35	18/07/2005 19:30
	0	25	35	18/07/2005 19:45
	0	25	35	18/07/2005 20:00
	0	25	35	18/07/2005 20:15
	0	25	35	18/07/2005 20:30
	0	25	35	18/07/2005 20:45
	0	25	35	18/07/2005 21:00
	0	25	35	18/07/2005 21:15
	0	25	35	18/07/2005 21:30
	0	25	35	18/07/2005 21:45
	0	25	35	18/07/2005 22:00
	0	25	35	18/07/2005 22:15
	0	25	35	18/07/2005 22:30
	0	25	35	18/07/2005 22:45
	0	25	35	18/07/2005 23:00
	0	25	35	18/07/2005 23:15
	0	25	35	18/07/2005 23:30
	0	25	35	18/07/2005 23:45
19/07/05	0	25	35	19/07/2005 00:00
	0	25	35	19/07/2005 00:15
	0	25	35	19/07/2005 00:30
	0	25	35	19/07/2005 00:45
	0	25	35	19/07/2005 01:00
	0	25	35	19/07/2005 01:15
	0	25	35	19/07/2005 01:30
	0	25	35	19/07/2005 01:45
	0	25	35	19/07/2005 02:00
	0	25	35	19/07/2005 02:15
	0	25	35	19/07/2005 02:30
	0	25	35	19/07/2005 02:45
	0	25	35	19/07/2005 03:00
	0	25	35	19/07/2005 03:15
	0	25	35	19/07/2005 03:30
	0	25	35	19/07/2005 03:45
	0	25	35	19/07/2005 04:00
	0	25	35	19/07/2005 04:15
	0	25	35	19/07/2005 04:30
	0	25	35	19/07/2005 04:45
	0	25	35	19/07/2005 05:00
	0	25	35	19/07/2005 05:15
	0	25	35	19/07/2005 05:30
	0	25	35	19/07/2005 05:45

0	25	35	19/07/2005 06:00
0	25	35	19/07/2005 06:15
0	25	35	19/07/2005 06:30
0	25	35	19/07/2005 06:45
0	25	35	19/07/2005 07:00
0	25	35	19/07/2005 07:15
0	25	35	19/07/2005 07:30
0	25	35	19/07/2005 07:45
0	25	35	19/07/2005 08:00
0	25	35	19/07/2005 08:15
0	25	35	19/07/2005 08:30
0	25	35	19/07/2005 08:45
0	25	35	19/07/2005 09:00
0	25	35	19/07/2005 09:15
0	25	35	19/07/2005 09:30
0	25	35	19/07/2005 09:45
0	25	35	19/07/2005 10:00
0	25	35	19/07/2005 10:15
0	25	35	19/07/2005 10:30
0	25	35	19/07/2005 10:45
0	25	35	19/07/2005 11:00
0	25	35	19/07/2005 11:15
0	25	35	19/07/2005 11:30
0	25	35	19/07/2005 11:45
0	25	35	19/07/2005 12:00
0	25	35	19/07/2005 12:15
0	25	35	19/07/2005 12:30
0	25	35	19/07/2005 12:45
0	25	35	19/07/2005 13:00
0	25	35	19/07/2005 13:15
0	25	35	19/07/2005 13:30
0	25	35	19/07/2005 13:45
0	25	35	19/07/2005 14:00
0	25	35	19/07/2005 14:15
0	25	35	19/07/2005 14:30
0	25	35	19/07/2005 14:45
0	25	35	19/07/2005 15:00
0	25	35	19/07/2005 15:15
0	25	35	19/07/2005 15:30
0	25	35	19/07/2005 15:45
0	25	35	19/07/2005 16:00
0	25	35	19/07/2005 16:15
0	25	35	19/07/2005 16:30
0	25	35	19/07/2005 16:45
0	25	35	19/07/2005 17:00
0	25	35	19/07/2005 17:15
0	25	35	19/07/2005 17:30
0	25	35	19/07/2005 17:45
0	25	35	19/07/2005 18:00
0	25	35	19/07/2005 18:15
0	25	35	19/07/2005 18:30
0	25	35	19/07/2005 18:45
0	25	35	19/07/2005 19:00
0	25	35	19/07/2005 19:15
0	25	35	19/07/2005 19:30
0	25	35	19/07/2005 19:45
0	25	35	19/07/2005 20:00
0	25	35	19/07/2005 20:15
0	25	35	19/07/2005 20:30

	0	25	35	19/07/2005 20:45
	0	25	35	19/07/2005 21:00
	0	25	35	19/07/2005 21:15
	0	25	35	19/07/2005 21:30
	0	25	35	19/07/2005 21:45
	0	25	35	19/07/2005 22:00
	0	25	35	19/07/2005 22:15
	0	25	35	19/07/2005 22:30
	0	25	35	19/07/2005 22:45
	0	25	35	19/07/2005 23:00
	0	25	35	19/07/2005 23:15
	0	25	35	19/07/2005 23:30
	0	25	35	19/07/2005 23:45
20/07/05	0	25	35	20/07/2005 00:00
	0	25	35	20/07/2005 00:15
	0	25	35	20/07/2005 00:30
	0	25	35	20/07/2005 00:45
	0	25	35	20/07/2005 01:00
	0	25	35	20/07/2005 01:15
	0	25	35	20/07/2005 01:30
	0	25	35	20/07/2005 01:45
	0	25	35	20/07/2005 02:00
	0	25	35	20/07/2005 02:15
	0	25	35	20/07/2005 02:30
	0	25	35	20/07/2005 02:45
	0	25	35	20/07/2005 03:00
	0	25	35	20/07/2005 03:15
	0	25	35	20/07/2005 03:30
	0	25	35	20/07/2005 03:45
	0	25	35	20/07/2005 04:00
	0	25	35	20/07/2005 04:15
	0	25	35	20/07/2005 04:30
	0	25	35	20/07/2005 04:45
	0	25	35	20/07/2005 05:00
	0	25	35	20/07/2005 05:15
	0	25	35	20/07/2005 05:30
	0	25	35	20/07/2005 05:45
	0	25	35	20/07/2005 06:00
	0	25	35	20/07/2005 06:15
	0	25	35	20/07/2005 06:30
	0	25	35	20/07/2005 06:45
	0	25	35	20/07/2005 07:00
	0	25	35	20/07/2005 07:15
	0	25	35	20/07/2005 07:30
	0	25	35	20/07/2005 07:45
	0	25	35	20/07/2005 08:00
	0	25	35	20/07/2005 08:15
	0	25	35	20/07/2005 08:30
	0	25	35	20/07/2005 08:45
	0	25	35	20/07/2005 09:00
	0	25	35	20/07/2005 09:15
	0	25	35	20/07/2005 09:30
	0	25	35	20/07/2005 09:45
	0	25	35	20/07/2005 10:00
	0	25	35	20/07/2005 10:15
	0	25	35	20/07/2005 10:30
	0	25	35	20/07/2005 10:45
	0	25	35	20/07/2005 11:00
	0	25	35	20/07/2005 11:15

	0	25	35	20/07/2005 11:30
	0	25	35	20/07/2005 11:45
	0	25	35	20/07/2005 12:00
	0	25	35	20/07/2005 12:15
	0	25	35	20/07/2005 12:30
	0	25	35	20/07/2005 12:45
	0	25	35	20/07/2005 13:00
	0	25	35	20/07/2005 13:15
	0	25	35	20/07/2005 13:30
	0	25	35	20/07/2005 13:45
	0	25	35	20/07/2005 14:00
	0	25	35	20/07/2005 14:15
	0	25	35	20/07/2005 14:30
	0	25	35	20/07/2005 14:45
	0	25	35	20/07/2005 15:00
	0	25	35	20/07/2005 15:15
	0	25	35	20/07/2005 15:30
	0	25	35	20/07/2005 15:45
	0	25	35	20/07/2005 16:00
	0	25	35	20/07/2005 16:15
	0	25	35	20/07/2005 16:30
	0	25	35	20/07/2005 16:45
	0	25	35	20/07/2005 17:00
	0	25	35	20/07/2005 17:15
	0	25	35	20/07/2005 17:30
	0	25	35	20/07/2005 17:45
	0	25	35	20/07/2005 18:00
	0	25	35	20/07/2005 18:15
	0	25	35	20/07/2005 18:30
	0	25	35	20/07/2005 18:45
	0	25	35	20/07/2005 19:00
	0	25	35	20/07/2005 19:15
	0	25	35	20/07/2005 19:30
	0	25	35	20/07/2005 19:45
	0	25	35	20/07/2005 20:00
	0	25	35	20/07/2005 20:15
	0	25	35	20/07/2005 20:30
	0	25	35	20/07/2005 20:45
	0	25	35	20/07/2005 21:00
	0	25	35	20/07/2005 21:15
	0	25	35	20/07/2005 21:30
	0	25	35	20/07/2005 21:45
	0	25	35	20/07/2005 22:00
	0	25	35	20/07/2005 22:15
	0	25	35	20/07/2005 22:30
	0	25	35	20/07/2005 22:45
	0	25	35	20/07/2005 23:00
	0	25	35	20/07/2005 23:15
	0	25	35	20/07/2005 23:30
	0	25	35	20/07/2005 23:45
21/07/05	0	25	35	21/07/2005 00:00
	0	25	35	21/07/2005 00:15
	0	25	35	21/07/2005 00:30
	0	25	35	21/07/2005 00:45
	0	25	35	21/07/2005 01:00
	0	25	35	21/07/2005 01:15
	0	25	35	21/07/2005 01:30
	0	25	35	21/07/2005 01:45
	0	25	35	21/07/2005 02:00

0	25	35	21/07/2005 02:15
0	25	35	21/07/2005 02:30
0	25	35	21/07/2005 02:45
0	25	35	21/07/2005 03:00
0	25	35	21/07/2005 03:15
0	25	35	21/07/2005 03:30
0	25	35	21/07/2005 03:45
0	25	35	21/07/2005 04:00
0	25	35	21/07/2005 04:15
0	25	35	21/07/2005 04:30
0	25	35	21/07/2005 04:45
0	25	35	21/07/2005 05:00
0	25	35	21/07/2005 05:15
0	25	35	21/07/2005 05:30
0	25	35	21/07/2005 05:45
0	25	35	21/07/2005 06:00
0	25	35	21/07/2005 06:15
0	25	35	21/07/2005 06:30
0	25	35	21/07/2005 06:45
0	25	35	21/07/2005 07:00
0	25	35	21/07/2005 07:15
0	25	35	21/07/2005 07:30
0	25	35	21/07/2005 07:45
0	25	35	21/07/2005 08:00
0	25	35	21/07/2005 08:15
0	25	35	21/07/2005 08:30
0	25	35	21/07/2005 08:45
0	25	35	21/07/2005 09:00
0	25	35	21/07/2005 09:15
0	25	35	21/07/2005 09:30
0	25	35	21/07/2005 09:45
0	25	35	21/07/2005 10:00
0	25	35	21/07/2005 10:15
0	25	35	21/07/2005 10:30
0	25	35	21/07/2005 10:45
0	25	35	21/07/2005 11:00
0	25	35	21/07/2005 11:15
0	25	35	21/07/2005 11:30
0	25	35	21/07/2005 11:45
0	25	35	21/07/2005 12:00
0	25	35	21/07/2005 12:15
0	25	35	21/07/2005 12:30
0	25	35	21/07/2005 12:45
0	25	35	21/07/2005 13:00
0	25	35	21/07/2005 13:15
0	25	35	21/07/2005 13:30
0	25	35	21/07/2005 13:45
0	25	35	21/07/2005 14:00
0	25	35	21/07/2005 14:15
0	25	35	21/07/2005 14:30
0	25	35	21/07/2005 14:45
0	25	35	21/07/2005 15:00
0	25	35	21/07/2005 15:15
0	25	35	21/07/2005 15:30
0	25	35	21/07/2005 15:45
0	25	35	21/07/2005 16:00
0	25	35	21/07/2005 16:15
0	25	35	21/07/2005 16:30
0	25	35	21/07/2005 16:45

	0	25	35	21/07/2005 17:00
	0	25	35	21/07/2005 17:15
	0	25	35	21/07/2005 17:30
	0	25	35	21/07/2005 17:45
	0	25	35	21/07/2005 18:00
	0	25	35	21/07/2005 18:15
	0	25	35	21/07/2005 18:30
	0	25	35	21/07/2005 18:45
	0	25	35	21/07/2005 19:00
	0	25	35	21/07/2005 19:15
	0	25	35	21/07/2005 19:30
	0	25	35	21/07/2005 19:45
	0	25	35	21/07/2005 20:00
	0	25	35	21/07/2005 20:15
	0	25	35	21/07/2005 20:30
	0	25	35	21/07/2005 20:45
	0	25	35	21/07/2005 21:00
	0	25	35	21/07/2005 21:15
	0	25	35	21/07/2005 21:30
	0	25	35	21/07/2005 21:45
	0	25	35	21/07/2005 22:00
	0	25	35	21/07/2005 22:15
	0	25	35	21/07/2005 22:30
	0	25	35	21/07/2005 22:45
	0	25	35	21/07/2005 23:00
	0	25	35	21/07/2005 23:15
	0	25	35	21/07/2005 23:30
	0	25	35	21/07/2005 23:45
22/07/05	0	25	35	22/07/2005 00:00
	0	25	35	22/07/2005 00:15
	0	25	35	22/07/2005 00:30
	0	25	35	22/07/2005 00:45
	0	25	35	22/07/2005 01:00
	0	25	35	22/07/2005 01:15
	0	25	35	22/07/2005 01:30
	0	25	35	22/07/2005 01:45
	0	25	35	22/07/2005 02:00
	0	25	35	22/07/2005 02:15
	0	25	35	22/07/2005 02:30
	0	25	35	22/07/2005 02:45
	0	25	35	22/07/2005 03:00
	0	25	35	22/07/2005 03:15
	0	25	35	22/07/2005 03:30
	0	25	35	22/07/2005 03:45
	0	25	35	22/07/2005 04:00
	0	25	35	22/07/2005 04:15
	0	25	35	22/07/2005 04:30
	0	25	35	22/07/2005 04:45
	0	25	35	22/07/2005 05:00
	0	25	35	22/07/2005 05:15
	0	25	35	22/07/2005 05:30
	0	25	35	22/07/2005 05:45
	0	25	35	22/07/2005 06:00
	0	25	35	22/07/2005 06:15
	0	25	35	22/07/2005 06:30
	0	25	35	22/07/2005 06:45
	0	25	35	22/07/2005 07:00
	0	25	35	22/07/2005 07:15
	0	25	35	22/07/2005 07:30

0	25	35	22/07/2005 07:45
0	25	35	22/07/2005 08:00
0	25	35	22/07/2005 08:15
0	25	35	22/07/2005 08:30
0	25	35	22/07/2005 08:45
0	25	35	22/07/2005 09:00
0	25	35	22/07/2005 09:15
0	25	35	22/07/2005 09:30
0	25	35	22/07/2005 09:45
0	25	35	22/07/2005 10:00
0	25	35	22/07/2005 10:15
0	25	35	22/07/2005 10:30
0	25	35	22/07/2005 10:45
0	25	35	22/07/2005 11:00
0	25	35	22/07/2005 11:15
0	25	35	22/07/2005 11:30
0	25	35	22/07/2005 11:45
0	25	35	22/07/2005 12:00
0	25	35	22/07/2005 12:15
0	25	35	22/07/2005 12:30
0	25	35	22/07/2005 12:45
0	25	35	22/07/2005 13:00
0	25	35	22/07/2005 13:15
0	25	35	22/07/2005 13:30
0	25	35	22/07/2005 13:45
0	25	35	22/07/2005 14:00
0	25	35	22/07/2005 14:15
0	25	35	22/07/2005 14:30
0	25	35	22/07/2005 14:45
0	25	35	22/07/2005 15:00
0	25	35	22/07/2005 15:15
0	25	35	22/07/2005 15:30
0	25	35	22/07/2005 15:45
0	25	35	22/07/2005 16:00
0	25	35	22/07/2005 16:15
0	25	35	22/07/2005 16:30
0	25	35	22/07/2005 16:45
0	25	35	22/07/2005 17:00
0	25	35	22/07/2005 17:15
0	25	35	22/07/2005 17:30
0	25	35	22/07/2005 17:45
0	25	35	22/07/2005 18:00
0	25	35	22/07/2005 18:15
0	25	35	22/07/2005 18:30
0	25	35	22/07/2005 18:45
0	25	35	22/07/2005 19:00
0	25	35	22/07/2005 19:15
0	25	35	22/07/2005 19:30
0	25	35	22/07/2005 19:45
0	25	35	22/07/2005 20:00
0	25	35	22/07/2005 20:15
0	25	35	22/07/2005 20:30
0	25	35	22/07/2005 20:45
0	25	35	22/07/2005 21:00
0	25	35	22/07/2005 21:15
0	25	35	22/07/2005 21:30
0	25	35	22/07/2005 21:45
0	25	35	22/07/2005 22:00
0	25	35	22/07/2005 22:15

	0	25	35	22/07/2005 22:30
	0	25	35	22/07/2005 22:45
	0	25	35	22/07/2005 23:00
	0	25	35	22/07/2005 23:15
	0	25	35	22/07/2005 23:30
	0	25	35	22/07/2005 23:45
23/07/05	0	25	35	23/07/2005 00:00
	0	25	35	23/07/2005 00:15
	0	25	35	23/07/2005 00:30
	0	25	35	23/07/2005 00:45
	0	25	35	23/07/2005 01:00
	0	25	35	23/07/2005 01:15
	0	25	35	23/07/2005 01:30
	0	25	35	23/07/2005 01:45
	0	25	35	23/07/2005 02:00
	0	25	35	23/07/2005 02:15
	0	25	35	23/07/2005 02:30
	0	25	35	23/07/2005 02:45
	0	25	35	23/07/2005 03:00
	0	25	35	23/07/2005 03:15
	0	25	35	23/07/2005 03:30
	0	25	35	23/07/2005 03:45
	0	25	35	23/07/2005 04:00
	0	25	35	23/07/2005 04:15
	0	25	35	23/07/2005 04:30
	0	25	35	23/07/2005 04:45
	0	25	35	23/07/2005 05:00
	0	25	35	23/07/2005 05:15
	0	25	35	23/07/2005 05:30
	0	25	35	23/07/2005 05:45
	0	25	35	23/07/2005 06:00
	0	25	35	23/07/2005 06:15
	0	25	35	23/07/2005 06:30
	0	25	35	23/07/2005 06:45
	0	25	35	23/07/2005 07:00
	0	25	35	23/07/2005 07:15
	0	25	35	23/07/2005 07:30
	0	25	35	23/07/2005 07:45
	0	25	35	23/07/2005 08:00
	0	25	35	23/07/2005 08:15
	0	25	35	23/07/2005 08:30
	0	25	35	23/07/2005 08:45
	0	25	35	23/07/2005 09:00
	0	25	35	23/07/2005 09:15
	0	25	35	23/07/2005 09:30
	0	25	35	23/07/2005 09:45
	0	25	35	23/07/2005 10:00
	0	25	35	23/07/2005 10:15
	0	25	35	23/07/2005 10:30
	0	25	35	23/07/2005 10:45
	0	25	35	23/07/2005 11:00
	0	25	35	23/07/2005 11:15
	0	25	35	23/07/2005 11:30
	0	25	35	23/07/2005 11:45
	0	25	35	23/07/2005 12:00
	0	25	35	23/07/2005 12:15
	0	25	35	23/07/2005 12:30
	0	25	35	23/07/2005 12:45
	0	25	35	23/07/2005 13:00

	0	25	35	23/07/2005 13:15
	0	25	35	23/07/2005 13:30
	0	25	35	23/07/2005 13:45
	0	25	35	23/07/2005 14:00
	0	25	35	23/07/2005 14:15
	0	25	35	23/07/2005 14:30
	0	25	35	23/07/2005 14:45
	0	25	35	23/07/2005 15:00
	0	25	35	23/07/2005 15:15
	0	25	35	23/07/2005 15:30
	0	25	35	23/07/2005 15:45
	0	25	35	23/07/2005 16:00
	0	25	35	23/07/2005 16:15
	0	25	35	23/07/2005 16:30
	0	25	35	23/07/2005 16:45
	0	25	35	23/07/2005 17:00
	0	25	35	23/07/2005 17:15
	0	25	35	23/07/2005 17:30
	0	25	35	23/07/2005 17:45
	0	25	35	23/07/2005 18:00
	0	25	35	23/07/2005 18:15
	0	25	35	23/07/2005 18:30
	0	25	35	23/07/2005 18:45
	0	25	35	23/07/2005 19:00
	0	25	35	23/07/2005 19:15
	0	25	35	23/07/2005 19:30
	0	25	35	23/07/2005 19:45
	0	25	35	23/07/2005 20:00
	0	25	35	23/07/2005 20:15
	0	25	35	23/07/2005 20:30
	0	25	35	23/07/2005 20:45
	0	25	35	23/07/2005 21:00
	0	25	35	23/07/2005 21:15
	0	25	35	23/07/2005 21:30
	0	25	35	23/07/2005 21:45
	0	25	35	23/07/2005 22:00
	0	25	35	23/07/2005 22:15
	0	25	35	23/07/2005 22:30
	0	25	35	23/07/2005 22:45
	0	25	35	23/07/2005 23:00
	0	25	35	23/07/2005 23:15
	0	25	35	23/07/2005 23:30
	0	25	35	23/07/2005 23:45
24/07/05	0	25	35	24/07/2005 00:00
	0	25	35	24/07/2005 00:15
	0	25	35	24/07/2005 00:30
	0	25	35	24/07/2005 00:45
	0	25	35	24/07/2005 01:00
	0	25	35	24/07/2005 01:15
	0	25	35	24/07/2005 01:30
	0	25	35	24/07/2005 01:45
	0	25	35	24/07/2005 02:00
	0	25	35	24/07/2005 02:15
	0	25	35	24/07/2005 02:30
	0	25	35	24/07/2005 02:45
	0	25	35	24/07/2005 03:00
	0	25	35	24/07/2005 03:15
	0	25	35	24/07/2005 03:30
	0	25	35	24/07/2005 03:45

0	25	35	24/07/2005 04:00
0	25	35	24/07/2005 04:15
0	25	35	24/07/2005 04:30
0	25	35	24/07/2005 04:45
0	25	35	24/07/2005 05:00
0	25	35	24/07/2005 05:15
0	25	35	24/07/2005 05:30
0	25	35	24/07/2005 05:45
0	25	35	24/07/2005 06:00
0	25	35	24/07/2005 06:15
0	25	35	24/07/2005 06:30
0	25	35	24/07/2005 06:45
0	25	35	24/07/2005 07:00
0	25	35	24/07/2005 07:15
0	25	35	24/07/2005 07:30
0	25	35	24/07/2005 07:45
0	25	35	24/07/2005 08:00
0	25	35	24/07/2005 08:15
0	25	35	24/07/2005 08:30
0	25	35	24/07/2005 08:45
0	25	35	24/07/2005 09:00
0	25	35	24/07/2005 09:15
0	25	35	24/07/2005 09:30
0	25	35	24/07/2005 09:45
0	25	35	24/07/2005 10:00
0	25	35	24/07/2005 10:15
0	25	35	24/07/2005 10:30
0	25	35	24/07/2005 10:45
0	25	35	24/07/2005 11:00
0	25	35	24/07/2005 11:15
0	25	35	24/07/2005 11:30
0	25	35	24/07/2005 11:45
0	25	35	24/07/2005 12:00
0	25	35	24/07/2005 12:15
0	25	35	24/07/2005 12:30
0	25	35	24/07/2005 12:45
0	25	35	24/07/2005 13:00
0	25	35	24/07/2005 13:15
0	25	35	24/07/2005 13:30
0	25	35	24/07/2005 13:45
0	25	35	24/07/2005 14:00
0	25	35	24/07/2005 14:15
0	25	35	24/07/2005 14:30
0	25	35	24/07/2005 14:45
0	25	35	24/07/2005 15:00
0	25	35	24/07/2005 15:15
0	25	35	24/07/2005 15:30
0	25	35	24/07/2005 15:45
0	25	35	24/07/2005 16:00
0	25	35	24/07/2005 16:15
0	25	35	24/07/2005 16:30
0	25	35	24/07/2005 16:45
0	25	35	24/07/2005 17:00
0	25	35	24/07/2005 17:15
0	25	35	24/07/2005 17:30
0	25	35	24/07/2005 17:45
0	25	35	24/07/2005 18:00
0	25	35	24/07/2005 18:15
0	25	35	24/07/2005 18:30

	0	25	35	24/07/2005 18:45
	0	25	35	24/07/2005 19:00
	0	25	35	24/07/2005 19:15
	0	25	35	24/07/2005 19:30
	0	25	35	24/07/2005 19:45
	0	25	35	24/07/2005 20:00
	0	25	35	24/07/2005 20:15
	0	25	35	24/07/2005 20:30
	0	25	35	24/07/2005 20:45
	0	25	35	24/07/2005 21:00
	0	25	35	24/07/2005 21:15
	0	25	35	24/07/2005 21:30
	0	25	35	24/07/2005 21:45
	0	25	35	24/07/2005 22:00
	0	25	35	24/07/2005 22:15
	0	25	35	24/07/2005 22:30
	0	25	35	24/07/2005 22:45
	0	25	35	24/07/2005 23:00
	0	25	35	24/07/2005 23:15
	0	25	35	24/07/2005 23:30
	0	25	35	24/07/2005 23:45
25/07/05	0	25	35	25/07/2005 00:00
	0	25	35	25/07/2005 00:15
	0	25	35	25/07/2005 00:30
	0	25	35	25/07/2005 00:45
	0	25	35	25/07/2005 01:00
	0	25	35	25/07/2005 01:15
	0	25	35	25/07/2005 01:30
	0	25	35	25/07/2005 01:45
	0	25	35	25/07/2005 02:00
	0	25	35	25/07/2005 02:15
	0	25	35	25/07/2005 02:30
	0	25	35	25/07/2005 02:45
	0	25	35	25/07/2005 03:00
	0	25	35	25/07/2005 03:15
	0	25	35	25/07/2005 03:30
	0	25	35	25/07/2005 03:45
	0	25	35	25/07/2005 04:00
	0	25	35	25/07/2005 04:15
	0	25	35	25/07/2005 04:30
	0	25	35	25/07/2005 04:45
	0	25	35	25/07/2005 05:00
	0	25	35	25/07/2005 05:15
	0	25	35	25/07/2005 05:30
	0	25	35	25/07/2005 05:45
	0	25	35	25/07/2005 06:00
	0	25	35	25/07/2005 06:15
	0	25	35	25/07/2005 06:30
	0	25	35	25/07/2005 06:45
	0	25	35	25/07/2005 07:00
	0	25	35	25/07/2005 07:15
	0	25	35	25/07/2005 07:30
	0	25	35	25/07/2005 07:45
	0	25	35	25/07/2005 08:00
	0	25	35	25/07/2005 08:15
	0	25	35	25/07/2005 08:30
	0	25	35	25/07/2005 08:45
	0	25	35	25/07/2005 09:00
	0	25	35	25/07/2005 09:15

	0	25	35	25/07/2005 09:30
	0	25	35	25/07/2005 09:45
	0	25	35	25/07/2005 10:00
	0	25	35	25/07/2005 10:15
	0	25	35	25/07/2005 10:30
	0	25	35	25/07/2005 10:45
	0	25	35	25/07/2005 11:00
	0	25	35	25/07/2005 11:15
	0	25	35	25/07/2005 11:30
	0	25	35	25/07/2005 11:45
	0	25	35	25/07/2005 12:00
	0	25	35	25/07/2005 12:15
	0	25	35	25/07/2005 12:30
	0	25	35	25/07/2005 12:45
	0	25	35	25/07/2005 13:00
	0	25	35	25/07/2005 13:15
	0	25	35	25/07/2005 13:30
	0	25	35	25/07/2005 13:45
	0	25	35	25/07/2005 14:00
	0	25	35	25/07/2005 14:15
	0	25	35	25/07/2005 14:30
	0	25	35	25/07/2005 14:45
	0	25	35	25/07/2005 15:00
	0	25	35	25/07/2005 15:15
	0	25	35	25/07/2005 15:30
	0	25	35	25/07/2005 15:45
	0	25	35	25/07/2005 16:00
	0	25	35	25/07/2005 16:15
	0	25	35	25/07/2005 16:30
	0	25	35	25/07/2005 16:45
	0	25	35	25/07/2005 17:00
	0	25	35	25/07/2005 17:15
	0	25	35	25/07/2005 17:30
	0	25	35	25/07/2005 17:45
	0	25	35	25/07/2005 18:00
	0	25	35	25/07/2005 18:15
	0	25	35	25/07/2005 18:30
	0	25	35	25/07/2005 18:45
	0	25	35	25/07/2005 19:00
	0	25	35	25/07/2005 19:15
	0	25	35	25/07/2005 19:30
	0	25	35	25/07/2005 19:45
	0	25	35	25/07/2005 20:00
	0	25	35	25/07/2005 20:15
	0	25	35	25/07/2005 20:30
	0	25	35	25/07/2005 20:45
	0	25	35	25/07/2005 21:00
	0	25	35	25/07/2005 21:15
	0	25	35	25/07/2005 21:30
	0	25	35	25/07/2005 21:45
	0	25	35	25/07/2005 22:00
	0	25	35	25/07/2005 22:15
	0	25	35	25/07/2005 22:30
	0	25	35	25/07/2005 22:45
	0	25	35	25/07/2005 23:00
	0	25	35	25/07/2005 23:15
	0	25	35	25/07/2005 23:30
	0	25	35	25/07/2005 23:45
26/07/05	0	25	35	26/07/2005 00:00

0	25	35	26/07/2005 00:15
0	25	35	26/07/2005 00:30
0	25	35	26/07/2005 00:45
0	25	35	26/07/2005 01:00
0	25	35	26/07/2005 01:15
0	25	35	26/07/2005 01:30
0	25	35	26/07/2005 01:45
0	25	35	26/07/2005 02:00
0	25	35	26/07/2005 02:15
0	25	35	26/07/2005 02:30
0	25	35	26/07/2005 02:45
0	25	35	26/07/2005 03:00
0	25	35	26/07/2005 03:15
0	25	35	26/07/2005 03:30
0	25	35	26/07/2005 03:45
0	25	35	26/07/2005 04:00
0	25	35	26/07/2005 04:15
0	25	35	26/07/2005 04:30
0	25	35	26/07/2005 04:45
0	25	35	26/07/2005 05:00
0	25	35	26/07/2005 05:15
0	25	35	26/07/2005 05:30
0	25	35	26/07/2005 05:45
0	25	35	26/07/2005 06:00
0	25	35	26/07/2005 06:15
0	25	35	26/07/2005 06:30
0	25	35	26/07/2005 06:45
0	25	35	26/07/2005 07:00
0	25	35	26/07/2005 07:15
0	25	35	26/07/2005 07:30
0	25	35	26/07/2005 07:45
0	25	35	26/07/2005 08:00
0	25	35	26/07/2005 08:15
0	25	35	26/07/2005 08:30
0	25	35	26/07/2005 08:45
0	25	35	26/07/2005 09:00
0	25	35	26/07/2005 09:15
0	25	35	26/07/2005 09:30
0	25	35	26/07/2005 09:45
0	25	35	26/07/2005 10:00
0	25	35	26/07/2005 10:15
0	25	35	26/07/2005 10:30
0	25	35	26/07/2005 10:45
0	25	35	26/07/2005 11:00
0	25	35	26/07/2005 11:15
0	25	35	26/07/2005 11:30
0	25	35	26/07/2005 11:45
0	25	35	26/07/2005 12:00
0	25	35	26/07/2005 12:15
0	25	35	26/07/2005 12:30
0	25	35	26/07/2005 12:45
0	25	35	26/07/2005 13:00
0	25	35	26/07/2005 13:15
0	25	35	26/07/2005 13:30
0	25	35	26/07/2005 13:45
0	25	35	26/07/2005 14:00
0	25	35	26/07/2005 14:15
0	25	35	26/07/2005 14:30
0	25	35	26/07/2005 14:45

	0	25	35	26/07/2005 15:00
	0	25	35	26/07/2005 15:15
	0	25	35	26/07/2005 15:30
	0	25	35	26/07/2005 15:45
	0	25	35	26/07/2005 16:00
	0	25	35	26/07/2005 16:15
	0	25	35	26/07/2005 16:30
	0	25	35	26/07/2005 16:45
	0	25	35	26/07/2005 17:00
	0	25	35	26/07/2005 17:15
	0	25	35	26/07/2005 17:30
	0	25	35	26/07/2005 17:45
	0	25	35	26/07/2005 18:00
	0	25	35	26/07/2005 18:15
	0	25	35	26/07/2005 18:30
	0	25	35	26/07/2005 18:45
	0	25	35	26/07/2005 19:00
	0	25	35	26/07/2005 19:15
	0	25	35	26/07/2005 19:30
	0	25	35	26/07/2005 19:45
	0	25	35	26/07/2005 20:00
	0	25	35	26/07/2005 20:15
	0	25	35	26/07/2005 20:30
	0	25	35	26/07/2005 20:45
	0	25	35	26/07/2005 21:00
	0	25	35	26/07/2005 21:15
	0	25	35	26/07/2005 21:30
	0	25	35	26/07/2005 21:45
	0	25	35	26/07/2005 22:00
	0	25	35	26/07/2005 22:15
	0	25	35	26/07/2005 22:30
	0	25	35	26/07/2005 22:45
	0	25	35	26/07/2005 23:00
	0	25	35	26/07/2005 23:15
	0	25	35	26/07/2005 23:30
	0	25	35	26/07/2005 23:45
27/07/05	0	25	35	27/07/2005 00:00
	0	25	35	27/07/2005 00:15
	0	25	35	27/07/2005 00:30
	0	25	35	27/07/2005 00:45
	0	25	35	27/07/2005 01:00
	0	25	35	27/07/2005 01:15
	0	25	35	27/07/2005 01:30
	0	25	35	27/07/2005 01:45
	0	25	35	27/07/2005 02:00
	0	25	35	27/07/2005 02:15
	0	25	35	27/07/2005 02:30
	0	25	35	27/07/2005 02:45
	0	25	35	27/07/2005 03:00
	0	25	35	27/07/2005 03:15
	0	25	35	27/07/2005 03:30
	0	25	35	27/07/2005 03:45
	0	25	35	27/07/2005 04:00
	0	25	35	27/07/2005 04:15
	0	25	35	27/07/2005 04:30
	0	25	35	27/07/2005 04:45
	0	25	35	27/07/2005 05:00
	0	25	35	27/07/2005 05:15
	0	25	35	27/07/2005 05:30

0	25	35	27/07/2005 05:45
0	25	35	27/07/2005 06:00
0	25	35	27/07/2005 06:15
0	25	35	27/07/2005 06:30
0	25	35	27/07/2005 06:45
0	25	35	27/07/2005 07:00
0	25	35	27/07/2005 07:15
0	25	35	27/07/2005 07:30
0	25	35	27/07/2005 07:45
0	25	35	27/07/2005 08:00
0	25	35	27/07/2005 08:15
0	25	35	27/07/2005 08:30
0	25	35	27/07/2005 08:45
0	25	35	27/07/2005 09:00
0	25	35	27/07/2005 09:15
0	25	35	27/07/2005 09:30
0	25	35	27/07/2005 09:45
0	25	35	27/07/2005 10:00
0	25	35	27/07/2005 10:15
0	25	35	27/07/2005 10:30
0	25	35	27/07/2005 10:45
0	25	35	27/07/2005 11:00
0	25	35	27/07/2005 11:15
0	25	35	27/07/2005 11:30
0	25	35	27/07/2005 11:45
0	25	35	27/07/2005 12:00
0	25	35	27/07/2005 12:15
0	25	35	27/07/2005 12:30
0	25	35	27/07/2005 12:45
0	25	35	27/07/2005 13:00
0	25	35	27/07/2005 13:15
0	25	35	27/07/2005 13:30
0	25	35	27/07/2005 13:45
0	25	35	27/07/2005 14:00
0	25	35	27/07/2005 14:15
0	25	35	27/07/2005 14:30
0	25	35	27/07/2005 14:45
0	25	35	27/07/2005 15:00
0	25	35	27/07/2005 15:15
0	25	35	27/07/2005 15:30
0	25	35	27/07/2005 15:45
0	25	35	27/07/2005 16:00
0	25	35	27/07/2005 16:15
0	25	35	27/07/2005 16:30
0	25	35	27/07/2005 16:45
0	25	35	27/07/2005 17:00
0	25	35	27/07/2005 17:15
0	25	35	27/07/2005 17:30
0	25	35	27/07/2005 17:45
0	25	35	27/07/2005 18:00
0	25	35	27/07/2005 18:15
0	25	35	27/07/2005 18:30
0	25	35	27/07/2005 18:45
0	25	35	27/07/2005 19:00
0	25	35	27/07/2005 19:15
0	25	35	27/07/2005 19:30
0	25	35	27/07/2005 19:45
0	25	35	27/07/2005 20:00
0	25	35	27/07/2005 20:15

	0	25	35	27/07/2005 20:30
	0	25	35	27/07/2005 20:45
	0	25	35	27/07/2005 21:00
	0	25	35	27/07/2005 21:15
	0	25	35	27/07/2005 21:30
	0	25	35	27/07/2005 21:45
	0	25	35	27/07/2005 22:00
	0	25	35	27/07/2005 22:15
	0	25	35	27/07/2005 22:30
	0	25	35	27/07/2005 22:45
	0	25	35	27/07/2005 23:00
	0	25	35	27/07/2005 23:15
	0	25	35	27/07/2005 23:30
	0	25	35	27/07/2005 23:45
28/07/05	0	25	35	28/07/2005 00:00
	0	25	35	28/07/2005 00:15
	0	25	35	28/07/2005 00:30
	0	25	35	28/07/2005 00:45
	0	25	35	28/07/2005 01:00
	0	25	35	28/07/2005 01:15
	0	25	35	28/07/2005 01:30
	0	25	35	28/07/2005 01:45
	0	25	35	28/07/2005 02:00
	0	25	35	28/07/2005 02:15
	0	25	35	28/07/2005 02:30
	0	25	35	28/07/2005 02:45
	0	25	35	28/07/2005 03:00
	0	25	35	28/07/2005 03:15
	0	25	35	28/07/2005 03:30
	0	25	35	28/07/2005 03:45
	0	25	35	28/07/2005 04:00
	0	25	35	28/07/2005 04:15
	0	25	35	28/07/2005 04:30
	0	25	35	28/07/2005 04:45
	0	25	35	28/07/2005 05:00
	0	25	35	28/07/2005 05:15
	0	25	35	28/07/2005 05:30
	0	25	35	28/07/2005 05:45
	0	25	35	28/07/2005 06:00
	0	25	35	28/07/2005 06:15
	0	25	35	28/07/2005 06:30
	0	25	35	28/07/2005 06:45
	0	25	35	28/07/2005 07:00
	0	25	35	28/07/2005 07:15
	0	25	35	28/07/2005 07:30
	0	25	35	28/07/2005 07:45
	0	25	35	28/07/2005 08:00
	0	25	35	28/07/2005 08:15
	0	25	35	28/07/2005 08:30
	0	25	35	28/07/2005 08:45
	0	25	35	28/07/2005 09:00
	0	25	35	28/07/2005 09:15
	0	25	35	28/07/2005 09:30
	0	25	35	28/07/2005 09:45
	0	25	35	28/07/2005 10:00
	0	25	35	28/07/2005 10:15
	0	25	35	28/07/2005 10:30
	0	25	35	28/07/2005 10:45
	0	25	35	28/07/2005 11:00

0	25	35	28/07/2005 11:15
0	25	35	28/07/2005 11:30
0	25	35	28/07/2005 11:45
0	25	35	28/07/2005 12:00
0	25	35	28/07/2005 12:15
0	25	35	28/07/2005 12:30
0	25	35	28/07/2005 12:45
0	25	35	28/07/2005 13:00
0	25	35	28/07/2005 13:15
0	25	35	28/07/2005 13:30
0	25	35	28/07/2005 13:45
0	25	35	28/07/2005 14:00
0	25	35	28/07/2005 14:15
0	25	35	28/07/2005 14:30
0	25	35	28/07/2005 14:45
0	25	35	28/07/2005 15:00
0	25	35	28/07/2005 15:15
0	25	35	28/07/2005 15:30
0	25	35	28/07/2005 15:45
0	25	35	28/07/2005 16:00
0	25	35	28/07/2005 16:15
0	25	35	28/07/2005 16:30
0	25	35	28/07/2005 16:45
0	25	35	28/07/2005 17:00
0	25	35	28/07/2005 17:15
0	25	35	28/07/2005 17:30
0	25	35	28/07/2005 17:45
0	25	35	28/07/2005 18:00
0	25	35	28/07/2005 18:15
0	25	35	28/07/2005 18:30
0	25	35	28/07/2005 18:45

Phosphate Monitoring Record Sheet

Conducted by		Approved by	
Name	Signed	Name	Signed

Date	Time	Results	Start O.D	Final O.D	Action Limit	Target Limit
15/07/2005	Fri Jul 15 00:40:58 2005	-0.104	0.0253	0.00347	40	70
	Fri Jul 15 01:40:19 2005	0.0961	0.0233	0.00391	40	70
	Fri Jul 15 02:39:41 2005	0.615	0.0223	0.00504	40	70
	Fri Jul 15 03:39:03 2005	0.762	0.0217	0.00535	40	70
	Fri Jul 15 04:38:25 2005	0.24	0.0226	0.00422	40	70
	Fri Jul 15 05:37:47 2005	0.303	0.0222	0.00436	40	70
	Fri Jul 15 06:37:09 2005	0.526	0.0221	0.00484	40	70
	Fri Jul 15 07:36:30 2005	0.571	0.0218	0.00494	40	70
	Fri Jul 15 08:35:52 2005	0.288	0.0227	0.00432	40	70
	Fri Jul 15 09:35:14 2005	1.47	0.0212	0.00688	40	70
	Fri Jul 15 10:36:09 2005	2.49	0.0221	0.00911	40	70
	Fri Jul 15 11:35:30 2005	2.43	0.0207	0.00898	40	70
	Fri Jul 15 12:34:51 2005	3.08	0.0197	0.0104	40	70
	Fri Jul 15 13:34:13 2005	3.32	0.019	0.0109	40	70
	Fri Jul 15 14:33:34 2005	3.91	0.0187	0.0122	40	70
	Fri Jul 15 15:32:57 2005	4.16	0.0187	0.0127	40	70
	Fri Jul 15 16:32:19 2005	4.9	0.0197	0.0143	40	70
	Fri Jul 15 17:31:40 2005	4.73	0.0196	0.014	40	70
	Fri Jul 15 18:31:02 2005	4.4	0.0214	0.0133	40	70
	Fri Jul 15 19:30:24 2005	4.17	0.0221	0.0128	40	70
	Fri Jul 15 20:29:46 2005	3.4	0.0229	0.0111	40	70
	Fri Jul 15 21:29:08 2005	2.41	0.0233	0.00893	40	70
	Fri Jul 15 22:28:30 2005	2.14	0.0228	0.00836	40	70
	Fri Jul 15 23:27:51 2005	1.51	0.0228	0.00698	40	70
16/07/2005	Sat Jul 16 00:27:13 2005	1.28	0.0227	0.00648	40	70
	Sat Jul 16 01:26:36 2005	1.42	0.0217	0.00678	40	70
	Sat Jul 16 02:25:57 2005	1.24	0.0216	0.0064	40	70
	Sat Jul 16 03:25:18 2005	1.16	0.0219	0.00622	40	70
	Sat Jul 16 04:24:40 2005	1.13	0.0218	0.00615	40	70
	Sat Jul 16 05:24:02 2005	0.835	0.0223	0.00551	40	70
Calibration	SYSTEM CALIBRATION	1.05	0.0154	1.09	40	70

	Sat Jul 16 06:30:52 2005	5.64	0.0224	0.016	40	70
	Sat Jul 16 07:29:43 2005	2.41	0.021	0.00893	40	70
	Sat Jul 16 08:29:04 2005	2.35	0.0205	0.0088	40	70
	Sat Jul 16 09:28:26 2005	2.78	0.0202	0.00975	40	70
	Sat Jul 16 10:27:48 2005	3.43	0.0194	0.0112	40	70
	Sat Jul 16 11:27:10 2005	4.17	0.0188	0.0128	40	70
	Sat Jul 16 12:26:32 2005	5.08	0.0176	0.0147	40	70
	Sat Jul 16 13:25:54 2005	5.35	0.0169	0.0153	40	70
	Sat Jul 16 14:25:15 2005	6.14	0.0155	0.017	40	70
	Sat Jul 16 15:24:37 2005	6.91	0.0133	0.0187	40	70
	Sat Jul 16 16:24:00 2005	7.32	0.0128	0.0196	40	70
	Sat Jul 16 17:23:22 2005	7.56	0.0135	0.0201	40	70
	Sat Jul 16 18:22:43 2005	7.64	0.014	0.0203	40	70
	Sat Jul 16 19:22:05 2005	5.76	0.0187	0.0162	40	70
	Sat Jul 16 20:21:26 2005	6.5	0.0155	0.0178	40	70
	Sat Jul 16 21:20:49 2005	3.89	0.022	0.0121	40	70
	Sat Jul 16 22:20:10 2005	3.06	0.0227	0.0103	40	70
	Sat Jul 16 23:19:32 2005	2.92	0.0214	0.01	40	70
17/07/2005	Sun Jul 17 00:18:53 2005	2.49	0.021	0.0091	40	70
	Sun Jul 17 01:18:15 2005	2.21	0.0209	0.0085	40	70
	Sun Jul 17 02:17:37 2005	2.15	0.0208	0.00836	40	70
	Sun Jul 17 03:16:59 2005	1.72	0.0215	0.00745	40	70
	Sun Jul 17 04:16:20 2005	1.69	0.0211	0.00738	40	70
	Sun Jul 17 05:15:42 2005	1.32	0.0216	0.00657	40	70
	Sun Jul 17 06:15:03 2005	1.3	0.0222	0.00653	40	70
	Sun Jul 17 07:14:25 2005	1.29	0.0215	0.0065	40	70
	Sun Jul 17 08:13:47 2005	1.31	0.0216	0.00656	40	70
	Sun Jul 17 09:13:09 2005	2.64	0.021	0.00943	40	70
	Sun Jul 17 10:12:31 2005	1.84	0.0203	0.00769	40	70
	Sun Jul 17 11:11:53 2005	2.07	0.0202	0.0082	40	70
	Sun Jul 17 12:11:14 2005	2.56	0.0192	0.00925	40	70
	Sun Jul 17 13:10:36 2005	1.8	0.0219	0.00762	40	70
	Sun Jul 17 14:09:58 2005	2.59	0.0202	0.00933	40	70
	Sun Jul 17 15:09:20 2005	3.31	0.0193	0.0109	40	70
	Sun Jul 17 16:08:41 2005	2.45	0.0222	0.00903	40	70
	Sun Jul 17 17:08:03 2005	2.28	0.0232	0.00865	40	70
	Sun Jul 17 18:07:24 2005	2.06	0.0243	0.00817	40	70

Calibration	18/07/2005	Sun Jul 17 19:06:47 2005	1.71	0.0259	0.00742	40	70
		Sun Jul 17 20:06:08 2005	3.73	0.029	0.0118	40	70
		Sun Jul 17 21:05:30 2005	5.69	0.0352	0.0161	40	70
		Sun Jul 17 22:04:51 2005	5.98	0.0354	0.0167	40	70
		Sun Jul 17 23:04:14 2005	5.59	0.0356	0.0159	40	70
		Mon Jul 18 00:03:36 2005	4.74	0.0362	0.014	40	70
		Mon Jul 18 01:02:58 2005	4.49	0.0352	0.0135	40	70
		Mon Jul 18 02:02:19 2005	3.34	0.0364	0.011	40	70
		Mon Jul 18 03:01:41 2005	3.83	0.0338	0.012	40	70
		Mon Jul 18 04:01:02 2005	2.49	0.035	0.00911	40	70
	19/07/2005	Mon Jul 18 05:00:24 2005	2.71	0.0335	0.00959	40	70
		SYSTEM CALIBRATION	1.06	0.0168	1.09	40	70
		Mon Jul 18 06:07:15 2005	7.84	0.0321	0.0207	40	70
		Mon Jul 18 07:06:07 2005	3.8	0.0321	0.012	40	70
		Mon Jul 18 08:05:28 2005	3.3	0.0329	0.0109	40	70
		Mon Jul 18 09:04:50 2005	4.75	0.0309	0.014	40	70
		Mon Jul 18 10:04:12 2005	6.42	0.03	0.0177	40	70
		Mon Jul 18 11:03:33 2005	7.91	0.0303	0.0209	40	70
		Mon Jul 18 12:02:55 2005	9.84	0.0301	0.0251	40	70
		Mon Jul 18 13:02:16 2005	8.92	0.0324	0.0231	40	70
		Mon Jul 18 14:01:38 2005	10.4	0.0311	0.0264	40	70
		Mon Jul 18 15:01:01 2005	11.1	0.028	0.0278	40	70
		Mon Jul 18 16:00:22 2005	10.4	0.0268	0.0263	40	70
		Mon Jul 18 16:59:43 2005	8.85	0.0267	0.0229	40	70
		Mon Jul 18 17:59:05 2005	8.28	0.0253	0.0217	40	70
		Mon Jul 18 18:58:27 2005	6.31	0.0266	0.0174	40	70
		Mon Jul 18 19:57:50 2005	3.99	0.0296	0.0124	40	70
		Mon Jul 18 20:57:11 2005	2.31	0.0313	0.00872	40	70
		Mon Jul 18 21:56:33 2005	1.69	0.0292	0.00736	40	70
		Mon Jul 18 22:55:54 2005	1.24	0.0281	0.00639	40	70
		Mon Jul 18 23:55:16 2005	1.14	0.0264	0.00617	40	70
		Tue Jul 19 00:54:38 2005	0.199	0.0263	0.00413	40	70
		Tue Jul 19 01:54:00 2005	0.00841	0.0254	0.00372	40	70
		Tue Jul 19 02:53:23 2005	-0.0729	0.0251	0.00354	40	70
		Tue Jul 19 03:52:44 2005	-0.137	0.0244	0.0034	40	70
		Tue Jul 19 04:52:06 2005	-0.204	0.0242	0.00326	40	70
		Tue Jul 19 05:51:28 2005	-0.0215	0.0239	0.00365	40	70

Calibration

	Tue Jul 19 06:50:49 2005	-0.125	0.0236	0.00343	40	70
	Tue Jul 19 07:50:12 2005	-0.00912	0.0235	0.00368	40	70
	Tue Jul 19 08:49:33 2005	0.219	0.0233	0.00418	40	70
	Tue Jul 19 09:48:55 2005	-0.0376	0.0241	0.00362	40	70
	Tue Jul 19 10:48:17 2005	0.198	0.0237	0.00413	40	70
	Tue Jul 19 11:47:40 2005	1.42	0.0211	0.00678	40	70
	Tue Jul 19 12:47:01 2005	0.86	0.0229	0.00557	40	70
	Tue Jul 19 13:46:23 2005	1.82	0.0207	0.00765	40	70
	Tue Jul 19 14:45:44 2005	1.53	0.021	0.00701	40	70
	Tue Jul 19 15:45:07 2005	2.46	0.0193	0.00904	40	70
	Tue Jul 19 16:44:29 2005	1.96	0.0206	0.00795	40	70
	Tue Jul 19 17:43:51 2005	1.77	0.0214	0.00755	40	70
	Tue Jul 19 18:43:13 2005	1.61	0.0225	0.00719	40	70
	Tue Jul 19 19:42:34 2005	1.08	0.0236	0.00604	40	70
	Tue Jul 19 20:41:56 2005	0.969	0.0239	0.0058	40	70
	Tue Jul 19 21:41:18 2005	0.631	0.0242	0.00507	40	70
	Tue Jul 19 22:40:39 2005	-0.126	0.025	0.00343	40	70
	Tue Jul 19 23:40:01 2005	0.178	0.0238	0.00409	40	70
20/07/2005	Wed Jul 20 00:39:24 2005	-0.232	0.0241	0.0032	40	70
	Wed Jul 20 01:38:45 2005	0.215	0.0231	0.00417	40	70
	Wed Jul 20 02:38:07 2005	0.083	0.0231	0.00388	40	70
	Wed Jul 20 03:37:29 2005	-0.285	0.0242	0.00308	40	70
	Wed Jul 20 04:36:51 2005	-0.218	0.0238	0.00323	40	70
	SYSTEM CALIBRATION	1.04	0.0171	1.09	40	70
	Wed Jul 20 05:43:42 2005	4.32	0.0245	0.0131	40	70
	Wed Jul 20 06:42:33 2005	0.833	0.0233	0.00551	40	70
	Wed Jul 20 07:41:55 2005	0.495	0.0233	0.00478	40	70
	Wed Jul 20 08:41:18 2005	0.394	0.0231	0.00456	40	70
	Wed Jul 20 09:40:39 2005	0.965	0.0217	0.0058	40	70
	Wed Jul 20 10:40:01 2005	0.818	0.0221	0.00548	40	70
	Wed Jul 20 11:39:23 2005	1.2	0.0215	0.0063	40	70
	Wed Jul 20 12:38:45 2005	1.63	0.0213	0.00724	40	70
	Wed Jul 20 13:38:07 2005	0.493	0.0243	0.00477	40	70
	Wed Jul 20 14:37:29 2005	1.02	0.0231	0.00591	40	70
	Wed Jul 20 15:36:51 2005	1.82	0.0203	0.00765	40	70
	Wed Jul 20 16:36:13 2005	1.44	0.0213	0.00682	40	70
	Wed Jul 20 17:35:34 2005	1.61	0.021	0.00721	40	70

21/07/2005	Wed Jul 20 18:34:56 2005	0.734	0.024	0.00529	40	70
	Wed Jul 20 19:34:18 2005	0.763	0.024	0.00536	40	70
	Wed Jul 20 20:33:40 2005	1.01	0.0232	0.00589	40	70
	Wed Jul 20 21:33:01 2005	0.584	0.0235	0.00497	40	70
	Wed Jul 20 22:32:23 2005	0.426	0.0237	0.00463	40	70
	Wed Jul 20 23:31:45 2005	0.669	0.0233	0.00515	40	70
	Thu Jul 21 00:31:07 2005	0.434	0.0234	0.00464	40	70
	Thu Jul 21 01:30:29 2005	0.687	0.0229	0.00519	40	70
	Thu Jul 21 02:29:51 2005	0.38	0.0236	0.00453	40	70
	Thu Jul 21 03:29:13 2005	0.28	0.024	0.00431	40	70
	Thu Jul 21 04:28:35 2005	0.313	0.0236	0.00438	40	70
	Thu Jul 21 05:27:58 2005	0.27	0.0239	0.00429	40	70
	Thu Jul 21 06:27:19 2005	0.26	0.0239	0.00426	40	70
	Thu Jul 21 07:26:41 2005	0.409	0.0239	0.00459	40	70
	Thu Jul 21 08:26:03 2005	0.588	0.0237	0.00498	40	70
	Thu Jul 21 09:25:25 2005	0.691	0.0231	0.0052	40	70
	Thu Jul 21 10:24:47 2005	-4.65	0.0348	-0.0064	40	70
	Thu Jul 21 11:24:09 2005	1.53	0.0221	0.00702	40	70
	Thu Jul 21 12:23:31 2005	1.33	0.0228	0.00658	40	70
	Thu Jul 21 13:22:52 2005	1.87	0.022	0.00777	40	70
	Thu Jul 21 14:22:14 2005	2.16	0.0221	0.0084	40	70
	Thu Jul 21 15:21:36 2005	2.13	0.0224	0.00833	40	70
	Thu Jul 21 16:20:57 2005	2.94	0.0211	0.0101	40	70
	Thu Jul 21 17:20:20 2005	3.01	0.0215	0.0102	40	70
	Thu Jul 21 18:19:42 2005	4.03	0.0184	0.0124	40	70
	Thu Jul 21 19:19:03 2005	2.77	0.0224	0.00971	40	70
	Thu Jul 21 20:18:25 2005	1.85	0.0263	0.00772	40	70
	Thu Jul 21 21:17:47 2005	1.76	0.027	0.00751	40	70
	Thu Jul 21 22:17:09 2005	1.62	0.0259	0.00722	40	70
	Thu Jul 21 23:16:31 2005	1.63	0.025	0.00725	40	70
22/07/2005	Fri Jul 22 00:15:53 2005	1.99	0.0242	0.00803	40	70
	Fri Jul 22 01:15:15 2005	1.73	0.0242	0.00747	40	70
	Fri Jul 22 02:14:38 2005	1.6	0.0241	0.00717	40	70
	Fri Jul 22 03:13:59 2005	1.34	0.0245	0.00661	40	70
	Fri Jul 22 04:13:21 2005	1.63	0.0245	0.00725	40	70
	SYSTEM CALIBRATION	1.01	0.0181	1.09	40	70
	Fri Jul 22 05:20:12 2005	4.6	0.0258	0.0137	40	70

Calibration

	Fri Jul 22 06:19:03 2005	1.98	0.0257	0.008	40	70
	Fri Jul 22 07:18:25 2005	1.95	0.0251	0.00795	40	70
	Fri Jul 22 08:17:47 2005	2.86	0.0243	0.00992	40	70
	Fri Jul 22 09:17:08 2005	2.87	0.0239	0.00993	40	70
	Fri Jul 22 10:16:30 2005	3.35	0.0239	0.011	40	70
	Fri Jul 22 11:15:51 2005	3.78	0.0234	0.0119	40	70
					40	70
	Fri Jul 22 13:14:36 2005	5.05	0.0212	0.0147	40	70
	Fri Jul 22 14:13:58 2005	4.98	0.022	0.0145	40	70
	Fri Jul 22 15:13:19 2005	5.37	0.0213	0.0154	40	70
	Fri Jul 22 16:12:41 2005	7.15	0.0195	0.0192	40	70
	Fri Jul 22 17:12:04 2005	7.22	0.0211	0.0194	40	70
	Fri Jul 22 18:11:26 2005	7.16	0.0225	0.0193	40	70
	Fri Jul 22 19:10:48 2005	4.72	0.028	0.0139	40	70
	Fri Jul 22 20:10:09 2005	5.18	0.0266	0.015	40	70
	Fri Jul 22 21:09:31 2005	4.06	0.0275	0.0125	40	70
	Fri Jul 22 22:08:55 2005	3.3	0.028	0.0109	40	70
	Fri Jul 22 23:08:16 2005	2.92	0.0274	0.01	40	70
23/07/2005	Sat Jul 23 00:07:38 2005	2.98	0.0266	0.0102	40	70
	Sat Jul 23 01:06:59 2005	2.5	0.0265	0.00914	40	70
	Sat Jul 23 02:06:21 2005	2.31	0.0269	0.00871	40	70
	Sat Jul 23 03:05:43 2005	2.28	0.0267	0.00865	40	70
	Sat Jul 23 04:05:05 2005	2.1	0.0274	0.00826	40	70
	Sat Jul 23 05:04:27 2005	1.74	0.0281	0.00748	40	70
	Sat Jul 23 06:03:48 2005	1.55	0.0283	0.00707	40	70
	Sat Jul 23 07:03:10 2005	1.88	0.0273	0.00778	40	70
	Sat Jul 23 08:02:31 2005	2.09	0.0268	0.00825	40	70
	Sat Jul 23 09:01:53 2005	2.45	0.0266	0.00903	40	70
	Sat Jul 23 10:01:16 2005	2.62	0.0273	0.00939	40	70
	Sat Jul 23 11:00:38 2005	6.55	0.0254	0.0179	40	70
	Sat Jul 23 12:00:00 2005	4.37	0.0267	0.0132	40	70
	Sat Jul 23 12:59:22 2005	4.19	0.0266	0.0128	40	70
	Sat Jul 23 13:58:43 2005	5.2	0.0252	0.015	40	70
	Sat Jul 23 14:58:06 2005	5.87	0.0255	0.0165	40	70
	Sat Jul 23 15:57:28 2005	6.28	0.0244	0.0173	40	70
	Sat Jul 23 16:56:50 2005	6.75	0.0239	0.0184	40	70
	Sat Jul 23 17:56:12 2005	7.5	0.0232	0.02	40	70

Calibration		Sat Jul 23 18:55:33 2005	6.79	0.0245	0.0184	40	70
		Sat Jul 23 19:54:56 2005	4.9	0.0284	0.0143	40	70
		Sat Jul 23 20:54:17 2005	4.1	0.0295	0.0126	40	70
		Sat Jul 23 21:53:39 2005	3.78	0.0285	0.0119	40	70
		Sat Jul 23 22:53:00 2005	3.06	0.0286	0.0104	40	70
		Sat Jul 23 23:52:22 2005	2.81	0.0277	0.0098	40	70
	24/07/2005	Sun Jul 24 00:51:45 2005	2.7	0.0279	0.00957	40	70
		Sun Jul 24 01:51:07 2005	2.81	0.0276	0.0098	40	70
		Sun Jul 24 02:50:28 2005	2.03	0.0288	0.00811	40	70
		Sun Jul 24 03:49:50 2005	1.67	0.0293	0.00733	40	70
		SYSTEM CALIBRATION	1.02	0.0207	1.09	40	70
		Sun Jul 24 04:56:40 2005	4.87	0.0292	0.0143	40	70
		Sun Jul 24 05:55:32 2005	2.53	0.0286	0.00919	40	70
		Sun Jul 24 06:54:55 2005	2.26	0.0287	0.00861	40	70
		Sun Jul 24 07:54:16 2005	2.28	0.028	0.00865	40	70
		Sun Jul 24 08:53:38 2005	2.89	0.0273	0.00998	40	70
		Sun Jul 24 09:53:00 2005	3.65	0.026	0.0116	40	70
		Sun Jul 24 10:52:23 2005	4.69	0.0257	0.0139	40	70
		Sun Jul 24 11:51:45 2005	4.73	0.0263	0.014	40	70
		Sun Jul 24 12:51:06 2005	5.83	0.0249	0.0164	40	70
		Sun Jul 24 13:50:28 2005	6.7	0.0229	0.0183	40	70
		Sun Jul 24 14:49:50 2005	6.44	0.0232	0.0177	40	70
		Sun Jul 24 15:49:12 2005	5.61	0.026	0.0159	40	70
		Sun Jul 24 16:48:34 2005	7	0.023	0.0189	40	70
		Sun Jul 24 17:47:55 2005	7.04	0.0227	0.019	40	70
		Sun Jul 24 18:47:17 2005	5.1	0.0269	0.0148	40	70
		Sun Jul 24 19:46:39 2005	4.49	0.0271	0.0135	40	70
		Sun Jul 24 20:46:01 2005	3.29	0.0281	0.0108	40	70
		Sun Jul 24 21:45:23 2005	2.63	0.0289	0.00942	40	70
		Sun Jul 24 22:44:45 2005	2.27	0.0281	0.00864	40	70
		Sun Jul 24 23:44:06 2005	1.76	0.0281	0.00752	40	70
	25/07/2005	Mon Jul 25 00:43:28 2005	1.53	0.0277	0.00702	40	70
		Mon Jul 25 01:42:50 2005	1.2	0.0277	0.0063	40	70
		Mon Jul 25 02:42:12 2005	0.931	0.0276	0.00572	40	70
		Mon Jul 25 03:41:35 2005	0.697	0.0276	0.00521	40	70
		Mon Jul 25 04:40:57 2005	0.441	0.028	0.00466	40	70
		Mon Jul 25 05:40:18 2005	0.231	0.0283	0.0042	40	70

Calibration	26/07/2005	Mon Jul 25 06:39:40 2005	0.0271	0.0284	0.00376	40	70
		Mon Jul 25 07:39:02 2005	0.584	0.0278	0.00497	40	70
		Mon Jul 25 08:38:24 2005	0.725	0.0271	0.00528	40	70
		Mon Jul 25 09:37:46 2005	1.05	0.0267	0.00599	40	70
		Mon Jul 25 10:37:07 2005	1.04	0.0274	0.00596	40	70
		Mon Jul 25 11:36:29 2005	1.68	0.0262	0.00734	40	70
		Mon Jul 25 12:35:52 2005	2.23	0.0259	0.00854	40	70
		Mon Jul 25 13:35:13 2005	2.19	0.0275	0.00845	40	70
		Mon Jul 25 14:34:35 2005	2.62	0.0291	0.00939	40	70
		Mon Jul 25 15:33:57 2005	1.76	0.0317	0.00752	40	70
		Mon Jul 25 16:33:19 2005	3.29	0.0281	0.0108	40	70
		Mon Jul 25 17:32:42 2005	4.27	0.0264	0.013	40	70
		Mon Jul 25 18:32:03 2005	3.47	0.0275	0.0112	40	70
		Mon Jul 25 19:31:25 2005	1.96	0.0305	0.00796	40	70
		Mon Jul 25 20:30:47 2005	1.55	0.03	0.00706	40	70
		Mon Jul 25 21:30:08 2005	1.42	0.0304	0.00679	40	70
		Mon Jul 25 22:29:30 2005	-0.0738	0.0314	0.00354	40	70
		Mon Jul 25 23:28:52 2005	0.767	0.0286	0.00537	40	70
		Tue Jul 26 00:28:15 2005	0.47	0.0289	0.00472	40	70
		Tue Jul 26 01:27:37 2005	0.344	0.0285	0.00445	40	70
		Tue Jul 26 02:26:59 2005	0.346	0.0282	0.00445	40	70
		Tue Jul 26 03:26:20 2005	-0.0177	0.0288	0.00366	40	70
		SYSTEM CALIBRATION	1.05	0.0222	1.09	40	70
		Tue Jul 26 04:33:11 2005	4.29	0.0304	0.013	40	70
		Tue Jul 26 05:32:02 2005	0.0882	0.0301	0.00389	40	70
		Tue Jul 26 06:31:24 2005	-0.521	0.029	0.00257	40	70
		Tue Jul 26 07:30:45 2005	0.646	0.0266	0.0051	40	70
		Tue Jul 26 08:30:07 2005	0.261	0.0277	0.00427	40	70
		Tue Jul 26 09:29:30 2005	-0.425	0.0294	0.00278	40	70
		Tue Jul 26 10:28:51 2005	0.989	0.0268	0.00585	40	70
		Tue Jul 26 11:28:13 2005	1.08	0.0271	0.00605	40	70
		Tue Jul 26 12:27:35 2005	1.6	0.0264	0.00718	40	70
		Tue Jul 26 13:26:57 2005	1.39	0.0264	0.00673	40	70
		Tue Jul 26 14:26:20 2005	1.45	0.0264	0.00686	40	70
		Tue Jul 26 15:25:42 2005	1.9	0.0262	0.00783	40	70
		Tue Jul 26 16:25:03 2005	1.41	0.0279	0.00676	40	70
		Tue Jul 26 17:24:25 2005	1.82	0.0272	0.00764	40	70

	Tue Jul 26 18:23:47 2005	1.94	0.0278	0.00792	40	70
	Tue Jul 26 19:23:08 2005	1.73	0.0283	0.00745	40	70
	Tue Jul 26 20:22:30 2005	1.64	0.0285	0.00726	40	70
	Tue Jul 26 21:21:52 2005	1.46	0.029	0.00687	40	70
	Tue Jul 26 22:21:14 2005	0.777	0.0298	0.00539	40	70
	Tue Jul 26 23:20:36 2005	0.821	0.0296	0.00548	40	70
27/07/2005	Wed Jul 27 00:19:57 2005	0.576	0.0293	0.00495	40	70
	Wed Jul 27 01:19:20 2005	0.181	0.0297	0.00409	40	70
	Wed Jul 27 02:18:42 2005	0.0101	0.0294	0.00372	40	70
	Wed Jul 27 03:18:04 2005	-0.195	0.0298	0.00328	40	70
	Wed Jul 27 04:17:25 2005	-0.106	0.0291	0.00347	40	70
	Wed Jul 27 05:16:47 2005	-0.0494	0.0292	0.00359	40	70
	Wed Jul 27 06:16:10 2005	-0.687	0.0301	0.00221	40	70
	Wed Jul 27 07:15:32 2005	0.0383	0.0285	0.00378	40	70
	Wed Jul 27 08:14:53 2005	0.322	0.0281	0.0044	40	70
	Wed Jul 27 09:14:15 2005	1.07	0.0269	0.00601	40	70
	Wed Jul 27 10:13:37 2005	0.634	0.0279	0.00508	40	70
	Wed Jul 27 11:13:00 2005	1.35	0.0272	0.00664	40	70
	Wed Jul 27 12:12:22 2005	1.55	0.0268	0.00708	40	70
	Wed Jul 27 13:11:44 2005	0.641	0.0297	0.00509	40	70
	Wed Jul 27 14:11:05 2005	0.548	0.0306	0.00489	40	70
	Wed Jul 27 15:10:27 2005	0.886	0.0297	0.00563	40	70
	Wed Jul 27 16:09:48 2005	1.22	0.0288	0.00636	40	70
	Wed Jul 27 17:09:10 2005	1.15	0.0294	0.00621	40	70
	Wed Jul 27 18:08:32 2005	0.793	0.0299	0.00542	40	70
	Wed Jul 27 19:07:54 2005	1.35	0.0287	0.00663	40	70
	Wed Jul 27 20:07:16 2005	0.726	0.0308	0.00528	40	70
	Wed Jul 27 21:06:37 2005	0.221	0.0313	0.00418	40	70
	Wed Jul 27 22:06:00 2005	-0.22	0.0314	0.00322	40	70
	Wed Jul 27 23:05:22 2005	-1.19	0.0341	0.00111	40	70
28/07/2005	Thu Jul 28 00:04:44 2005	-1.15	0.0337	0.0012	40	70
	Thu Jul 28 01:04:05 2005	-1.09	0.0324	0.00133	40	70
	Thu Jul 28 02:03:27 2005	-0.938	0.0317	0.00166	40	70
	Thu Jul 28 03:02:50 2005	-1.24	0.032	0.001	40	70
Calibration	SYSTEM CALIBRATION	1.07	0.0237	1.09	40	70
	Thu Jul 28 04:09:40 2005	3.32	0.0322	0.0109	40	70
	Thu Jul 28 05:08:31 2005	-0.855	0.0325	0.00184	40	70

Thu Jul 28 06:07:54 2005	-1.67	0.034	7.28E-05	40	70
Thu Jul 28 07:07:17 2005	-0.566	0.0303	0.00247	40	70
Thu Jul 28 08:06:38 2005	-0.139	0.0291	0.0034	40	70
Thu Jul 28 09:06:00 2005	0.176	0.0291	0.00408	40	70
Thu Jul 28 10:05:21 2005	0.135	0.0299	0.00399	40	70
Thu Jul 28 11:04:43 2005	0.56	0.0288	0.00492	40	70
Thu Jul 28 12:04:05 2005	1.28	0.028	0.00649	40	70
Thu Jul 28 13:03:26 2005	-0.347	0.0319	0.00295	40	70
Thu Jul 28 14:02:49 2005	1.33	0.0289	0.00658	40	70
Thu Jul 28 15:02:10 2005	1.8	0.0276	0.0076	40	70
Thu Jul 28 16:01:32 2005	2.39	0.0275	0.0089	40	70
Thu Jul 28 17:00:54 2005	3.03	0.0266	0.0103	40	70
Thu Jul 28 18:00:16 2005	1.83	0.0307	0.00767	40	70

Surface Water Monitoring Record Sheet																																																											
Conducted by					In-Situ Analyser, Downloaded by:					Approved by																																																	
Name					Leslie Finnegan					Signed					Name					Signed																																							
Date					Temperature (°C)					Conductivity (mS/cm)					Turbidity (ntu)					pH (pH units)					DO (%)																																		
SP1					SP3					D22					D62					SP1					SP3					D22					D62					SP1					SP3					D22					D62				

Groundwater Monitoring Record Sheet																										
Conducted by											Approved by															
In-Situ Analyser, Downloaded by:																										
Name					Leslie Finnegan						Signed					Name					Signed					
Date	Temperature (°C)					Conductivity (mS/cm)					pH (pH units)					pHmV (mV)										
	MP1	MP2	MP4	MP6	MP7	MP1	MP2	MP4	MP6	MP7	MP1	MP2	MP4	MP6	MP7	MP1	MP2	MP4	MP6	MP7						
15/07/05	10.28	15.4	10.04	9.94	10.2	276.2	449.6	396.1	487.1	360.4	5.99	7.11	6.37	6.61	6.1	41.5	-21.1	20.9	6.3	32.5						
	10.28	15.4	10.04	9.94	10.2	276.2	449.4	396.3	487.3	359.9	5.98	7.1	6.37	6.62	6.1	41.8	-21	20.9	6.2	32.7						
	10.28	15.4	10.04	9.94	10.2	276.2	449.4	396.1	487.1	360.5	5.98	7.11	6.38	6.62	6.1	41.9	-21.1	20.6	6.2	32.7						
	10.28	15.4	10.04	9.94	10.2	276.1	449.5	396.2	487.2	360.9	5.99	7.11	6.38	6.62	6.11	41.6	-21.2	20.6	6.2	32.3						
	10.28	15.4	10.04	9.94	10.21	276.2	449.6	396.2	487.3	360.7	5.98	7.1	6.38	6.61	6.1	41.9	-21.1	20.9	6.6	32.6						
	10.28	15.41	10.04	9.94	10.21	276.2	449.6	396.3	487.4	360.6	5.99	7.11	6.38	6.61	6.11	41.6	-21.2	20.6	6.6	32.3						
	10.27	15.41	10.04	9.94	10.21	276	449.5	396.3	487.3	360.2	5.98	7.11	6.38	6.61	6.11	41.9	-21.2	20.6	6.7	32.2						
	10.27	15.41	10.04	9.94	10.21	276	449.7	396.3	487.2	360.4	5.98	7.11	6.38	6.61	6.1	42	-21.1	20.5	6.7	32.5						
	10.27	15.41	10.04	9.94	10.21	276	449.8	396.2	487.1	360.8	5.99	7.11	6.38	6.61	6.1	41.6	-21.3	20.5	6.7	32.7						
	10.27	15.41	10.04	9.94	10.21	275.9	450.2	396.5	487.3	360.7	5.99	7.11	6.38	6.61	6.11	41.5	-21.2	20.5	6.7	32.3						
	10.27	15.41	10.04	9.94	10.21	276	450.1	396.4	487.2	360.9	5.98	7.11	6.38	6.61	6.1	41.9	-21.3	20.8	6.3	32.7						
	10.27	15.42	10.04	9.94	10.2	275.9	450.3	396.7	487.3	360.5	5.98	7.11	6.38	6.62	6.11	41.9	-21.2	20.6	6.2	32.3						
	10.27	15.42	10.04	9.94	10.2	275.9	450.3	396.3	487.4	361.1	5.98	7.11	6.38	6.62	6.11	42	-21.4	20.8	6.2	32.3						
	10.27	15.42	10.04	9.94	10.2	275.9	450.4	396.6	487.3	360.6	5.98	7.11	6.37	6.62	6.11	42	-21.3	20.9	6.2	32.2						
	10.27	15.42	10.04	9.94	10.21	275.8	450.5	396.6	487.3	361	5.99	7.11	6.38	6.62	6.11	41.6	-21.2	20.6	6.2	32.3						
	10.27	15.42	10.04	9.94	10.2	275.8	450.5	396.6	487.3	360.4	5.98	7.11	6.37	6.62	6.1	41.9	-21.4	20.9	6.2	32.6						
	10.27	15.43	10.04	9.94	10.2	275.7	450.7	396.6	487.4	360.3	5.98	7.11	6.37	6.62	6.11	42	-21.5	20.9	6.1	32.3						
	10.27	15.43	10.04	9.94	10.21	275.9	450.7	396.7	487.2	360.9	5.98	7.11	6.38	6.61	6.1	42	-21.5	20.6	6.5	32.6						
	10.27	15.43	10.05	9.94	10.2	275.7	450.8	396.5	487.3	361	5.99	7.11	6.37	6.61	6.11	41.6	-21.4	20.9	6.6	32.3						
	10.27	15.43	10.04	9.94	10.2	275.8	450.8	396.6	487.3	360.4	5.99	7.11	6.37	6.62	6.1	41.5	-21.5	20.9	6.2	32.7						
	10.27	15.43	10.04	9.94	10.21	275.8	450.9	396.9	487.5	360.4	5.99	7.11	6.37	6.62	6.1	41.4	-21.4	20.9	6.2	32.7						
	10.27	15.43	10.05	9.94	10.21	275.7	450.7	396.8	487.3	360.7	5.98	7.11	6.37	6.62	6.1	41.8	-21.5	20.9	6.2	32.7						
	10.27	15.44	10.05	9.94	10.21	275.8	450.7	396.7	487.3	360.3	5.99	7.11	6.37	6.61	6.1	41.6	-21.4	20.9	6.5	32.8						
	10.27	15.44	10.05	9.94	10.2	275.8	450.7	397	487.2	360.9	5.99	7.11	6.38	6.61	6.11	41.5	-21.5	20.6	6.6	32.3						
	10.27	15.44	10.05	9.94	10.21	275.8	450.9	396.8	487.5	360.6	5.98	7.11	6.37	6.61	6.11	41.9	-21.4	20.9	6.6	32.2						
	10.27	15.44	10.05	9.94	10.2	275.8	450.5	397	487.3	360.7	5.99	7.11	6.37	6.61	6.11	41.6	-21.4	20.9	6.6	32.3						
	10.27	15.44	10.05	9.94	10.2	275.8	450.4	397.1	487.5	360.7	5.98	7.11	6.38	6.61	6.11	41.9	-21.6	20.6	6.6	32.2						
	10.27	15.45	10.05	9.94	10.21	275.8	450.1	397	487.3	360.7	5.99	7.11	6.38	6.61	6.11	41.6	-21.6	20.9	6.6	32.2						
	10.27	15.45	10.05	9.94	10.2	275.8	450.1	396.9	487.4	360.5	5.98	7.11	6.38	6.62	6.1	41.9	-21.5	20.6	6.2	32.6						
	10.27	15.45	10.05	9.94	10.2	275.8	449.9	397	487.5	360.7	5.99	7.11	6.37	6.61	6.11	41.6	-21.6	20.9	6.5	32.3						
	10.27	15.45	10.05	9.94	10.2	275.7	449.8	396.9	487.1	360.7	5.99	7.11	6.37	6.61	6.11	41.4	-21.5	20.9	6.6	32.2						
	10.27	15.45	10.05	9.94	10.2	275.8	449.5	397	487	360.7	5.99	7.11	6.37	6.61	6.11	41.4	-21.4	20.9	6.6	32.2						
	10.27	15.46	10.05	9.94	10.2	275.8	449.2	396.9	487.3	360.3	5.99	7.11	6.37	6.62	6.1	41.4	-21.4	20.9	6.2	32.6						
	10.27	15.46	10.05	9.94	10.2	275.8	449	397.1	486.9	360.9	5.99	7.11	6.37	6.62	6.1	41.4	-21.4	20.9	6.2	32.7						
	10.27	15.46	10.05	9.94	10.21	275.8	448.6	397.1	487	360.9	5.99	7.11	6.38	6.61	6.11	41.4	-21.5	20.6	6.5	32.3						
	10.27	15.46	10.05	9.94	10.2	275.6	448.4	397.1	487	360.8	5.98	7.11	6.38	6.61	6.11	41.8	-21.4	20.6	6.6	32.2						
	10.27	15.46	10.05	9.94	10.2	275.9	448.3	396.9	486.7	360.5	5.99	7.11	6.38	6.62	6.1	41.5	-21.5	20.6	6.2	32.6						
	10.27	15.46	10.05	9.94	10.2	275.8	448.1	397.2	486.8	361.2	5.99	7.11	6.38	6.61	6.1	41.4	-21.4	20.5	6.5	32.7						
	10.27	15.47	10.05	9.94	10.2	275.8	447.7	396.9	486.8	360.7	5.99	7.11	6.38	6.61	6.11	41.4	-21.4	20.5	6.6	32.3						
	10.27	15.47	10.05	9.94	10.2	275.8	447.4	396.9	486.7	360.6	5.99	7.11	6.38	6.61	6.1	41.4	-21.5	20.9	6.6	32.7						
	10.27	15.47	10.05	9.94	10.2	275.7	447.1	397	486.6	360.5	5.98	7.11	6.37	6.61	6.1	41.8	-21.4	20.9	6.6	32.7						
	10.27	15.47	10.05	9.94	10.2	275.8	447.1	397	486.4	360.6	5.98	7.11	6.38	6.61	6.1	41.9	-21.5	20.6	6.3	32.7						
	10.27	15.47	10.05	9.94	10.2	275.8	446.8	397	486.4	360.4	5.98	7.11	6.37	6.62	6.1	41.9	-21.6	20.9	6.2	32.8						
	10.27	15.47	10.05	10.15	10.31	275.8	446.7	397.2	477.4	359.2	5.99	7.11	6.38	6.6	6.14	41.6	-21.6	20.6	7.1	30.4						
	10.27	14.98	10.05	10.04	10.21	275.8	477.5	397.3	474	362.4	5.99	7.02	6.37	6.61	6.08	41.4	-16.1	20.9	6.5	33.7						
	11.06	14.95	10.05	9.98	10.2	275.1	475.7	397.1	472.4	362.3	5.95	7.01	6.38	6.62	6.1	43.6	-15.4	20.6	6	32.5						
	10.82	14.92	10.05	9.93	10.21	274.7	474.6	397.2	471.8	361.1	5.97	6.99	6.37	6.61	6.1	42.5	-14.7	20.9	6.5	32.5						
	10.67	14.91	10.05	9.91	10.2	273.9	474	397.2	471.3	360	5.97	7	6.38	6.62	6.1	42.4	-15.1	20.6	6.2	32.6						
	10.59	14.9	10.05	9.89	10.2	273.3	473.5	397.2	471.1	360.2	5.97	7.01	6.38	6.62	6.1	42.5	-15.6	20.6	6.2	33						

Groundwater Monitoring Record Sheet																				
Conducted by In-Situ Analyser, Downloaded by:											Approved by									
Name Leslie Finnegan					Signed						Name					Signed				
	Temperature (°C)					Conductivity (mS/cm)					pH (pH units)					pHmV (mV)				
Date	MP1	MP2	MP4	MP6	MP7	MP1	MP2	MP4	MP6	MP7	MP1	MP2	MP4	MP6	MP7	MP1	MP2	MP4	MP6	MP7
16/07/05	10.54	14.89	10.73	9.87	10.21	272.7	472.8	360.4	471.1	359.9	5.97	7.01	6.38	6.61	6.1	42.6	-15.5	20.6	6.6	32.5
	10.51	14.89	10.5	9.86	10.21	272.3	472.6	354.5	470.8	359.7	5.98	7.01	6.39	6.61	6.1	42.2	-15.6	20	6.6	32.7
	10.5	14.88	10.39	9.86	10.2	271.8	472.2	349.5	470.5	360	5.98	7.01	6.4	6.61	6.11	42.1	-15.6	19.7	6.7	32.4
	10.48	14.88	10.33	9.85	10.2	271.6	472.1	347.9	470.5	360	5.98	7.01	6.38	6.61	6.11	42.1	-15.4	20.4	6.3	32.4
	10.47	14.88	10.29	9.85	10.2	271.3	472	347.5	470.5	359.5	5.97	7.01	6.39	6.62	6.1	42.6	-15.7	20.3	6.2	32.7
	10.47	14.88	10.26	9.85	10.2	271.2	471.7	347.9	470.2	358.9	5.98	7.02	6.37	6.61	6.1	42.2	-15.9	20.9	6.6	32.5
	10.46	14.88	10.24	9.84	10.2	271.2	471.8	348.1	469.8	359.3	5.97	7.02	6.37	6.61	6.1	42.6	-16.2	21.1	6.6	32.4
	10.46	14.88	10.22	9.84	10.21	271.2	471.8	348.2	469.4	358.6	5.98	7.02	6.37	6.61	6.1	42.2	-16.5	21.2	6.7	32.8
	10.45	14.88	10.21	9.84	10.2	271	471.7	347.9	468.7	359.6	5.97	7.03	6.37	6.61	6.1	42.6	-16.7	21.1	6.4	32.5
	10.45	14.88	10.2	9.84	10.2	271.1	471.7	347.2	468.5	359.1	5.97	7.03	6.37	6.61	6.11	42.7	-16.6	21.1	6.8	32.3
	10.44	14.88	10.19	9.84	10.2	270.9	471.7	346.5	468.1	359.5	5.97	7.03	6.36	6.6	6.1	42.7	-16.7	21.6	6.8	32.9
	10.44	14.88	10.18	9.84	10.2	271	471.8	345.9	467.5	359.8	5.98	7.03	6.36	6.61	6.1	42.2	-16.7	21.7	6.5	32.8
	10.44	14.88	10.18	9.84	10.2	270.9	471.5	345.3	467.5	359.5	5.98	7.03	6.37	6.61	6.1	42.1	-16.8	21.4	6.5	32.7
	10.44	14.88	10.17	9.84	10.2	271	471.5	344.7	467	359.8	5.97	7.03	6.37	6.61	6.1	42.5	-17	21.4	6.5	32.8
	10.43	14.88	10.17	9.84	10.2	270.9	471.6	344	466.8	360.4	5.97	7.04	6.36	6.61	6.1	42.7	-17.2	21.8	6.5	32.8
	10.43	14.88	10.17	9.84	10.2	270.8	471.6	343.4	466.6	360	5.98	7.04	6.36	6.61	6.1	42.2	-17.3	22	6.5	32.8
	10.43	14.88	10.16	9.84	10.2	270.8	471.5	343	466	360.2	5.97	7.04	6.35	6.6	6.1	42.6	-17.4	22	7	32.8
	10.43	14.88	10.16	9.84	10.2	270.8	471.8	342.4	466.2	360.5	5.97	7.04	6.36	6.61	6.11	42.7	-17.3	21.9	6.7	32.4
	10.42	14.88	10.16	9.84	10.2	270.7	471.7	342	465.9	360	5.97	7.04	6.35	6.6	6.11	42.7	-17.4	22.2	7.1	32.3
	10.42	14.89	10.16	9.84	10.2	270.7	472	341.6	465.8	360.2	5.97	7.04	6.35	6.6	6.1	42.7	-17.5	22.4	7.1	32.8
	10.42	14.89	10.15	9.84	10.2	270.6	472.2	341	465.8	360.9	5.97	7.04	6.35	6.61	6.11	42.6	-17.6	22.5	6.8	32.3
	10.42	14.89	10.15	9.83	10.21	270.7	472.3	340.7	465.8	360.5	5.98	7.05	6.34	6.61	6.11	42.2	-17.8	22.6	6.6	32.3
	10.42	14.89	10.15	9.83	10.2	270.7	472.5	340.2	465.5	360.2	5.98	7.05	6.35	6.6	6.11	42.1	-17.8	22.4	6.9	32.2
	10.42	14.89	10.15	9.83	10.2	270.6	472.7	339.9	465.9	360.4	5.97	7.05	6.34	6.6	6.11	42.4	-18	22.8	6.8	32.2
	10.41	14.89	10.15	9.83	10.21	270.8	472.9	339.3	466	360.3	5.97	7.05	6.34	6.61	6.1	42.5	-18.1	22.6	6.4	32.5
	10.41	14.89	10.15	9.83	10.2	270.8	473	339	466	360	5.97	7.05	6.34	6.61	6.1	42.5	-18.1	22.9	6.3	32.7
	10.41	14.9	10.15	9.83	10.2	270.8	472.9	338.5	465.8	360.8	5.97	7.06	6.34	6.61	6.1	42.4	-18.2	22.8	6.7	32.8
	10.41	14.9	10.15	9.83	10.2	270.9	473.2	338.3	465.8	360.2	5.97	7.05	6.34	6.61	6.1	42.4	-18.2	22.7	6.3	32.7
	10.41	14.9	10.15	9.83	10.2	271.1	473.2	338	465.9	360.2	5.97	7.06	6.33	6.61	6.1	42.4	-18.4	23.2	6.7	32.7
	10.41	14.9	10.14	9.83	10.21	271	473.7	337.6	465.8	360.2	5.97	7.06	6.34	6.61	6.1	42.3	-18.3	23	6.3	32.7
	10.41	14.9	10.14	9.83	10.2	271	473.6	337.2	466	360.6	5.98	7.06	6.34	6.61	6.1	42.2	-18.4	23	6.7	32.7
	10.41	14.9	10.14	9.83	10.2	271.1	473.8	336.9	466.1	360.3	5.98	7.06	6.34	6.61	6.1	41.9	-18.6	23.1	6.7	32.7
	10.41	14.91	10.14	9.83	10.21	271.1	473.9	336.6	466	360.6	5.98	7.06	6.33	6.61	6.1	42.2	-18.7	23.2	6.3	32.5
	10.41	14.91	10.14	9.83	10.2	271.1	474.1	336.3	466	360.1	5.98	7.06	6.33	6.61	6.11	41.8	-18.7	23.3	6.7	32.3
	10.41	14.91	10.14	9.83	10.2	271.3	474.2	335.7	466.2	360.8	5.99	7.07	6.32	6.61	6.11	41.6	-18.8	23.8	6.3	32.3
	10.41	14.91	10.14	9.83	10.2	271.2	474.3	335.4	466.1	360.6	5.98	7.07	6.33	6.61	6.11	42.1	-18.9	23.6	6.7	32.3
	10.41	14.91	10.14	9.83	10.2	271.2	474.4	335.1	466.2	360.6	5.98	7.06	6.33	6.61	6.11	42.1	-18.7	23.6	6.7	32.2
	10.41	14.91	10.14	9.83	10.2	271.3	474.5	334.7	466.3	360.3	5.98	7.06	6.32	6.61	6.1	42.1	-18.7	23.7	6.3	32.6
	10.4	14.91	10.14	9.83	10.2	271.2	474.6	334.3	466.1	360.4	5.99	7.07	6.32	6.61	6.11	41.7	-18.9	23.9	6.7	32.3
	10.4	14.91	10.14	9.83	10.2	271.5	474.7	334.1	466	360.8	5.98	7.07	6.31	6.61	6.1	42	-19	24.4	6.3	32.6
10.4	14.92	10.14	9.83	10.2	271.3	474.8	333.6	466	360.5	5.98	7.07	6.32	6.61	6.11	42.1	-18.9	24.2	6.7	32.4	
10.4	14.92	10.14	9.83	10.2	271.4	475	333.2	466.1	360.7	5.98	7.07	6.31	6.61	6.11	42.1	-19.1	24.3	6.7	32.2	
10.4	14.92	10.14	9.83	10.2	271.4	475	332.9	466.1	360.6	5.98	7.07	6.31	6.61	6.1	42.1	-19.2	24.4	6.3	32.6	
10.4	14.92	10.14	9.83	10.2	271.4	475.1	332.6	466.1	360.6	5.99	7.07	6.31	6.62	6.11	41.6	-19.2	24.5	6.2	32.3	
10.4	14.92	10.14	9.83	10.2	271.5	475.3	332.4	465.8	360.1	5.99	7.07	6.31	6.62	6.11	41.4	-19.1	24.5	6.2	32.3	
10.4	14.92	10.14	9.83	10.2	271.5	475.4	332	465.9	360.5	5.98	7.07	6.3	6.61	6.11	41.9	-19.2	25	6.6	32.2	
10.4	14.92	10.14	9.83	10.2	271.4	475.6	331.7	465.9	359.8	5.99	7.07	6.3	6.61	6.11	41.5	-19.2	24.8	6.3	32.1	
10.4	14.92	10.14	9.83	10.21	271.5	475.7	331.5	466	360.2	5.98	7.07	6.3	6.61	6.1	41.8	-19.3	25.1	6.2	32.7	
10.4	14.92	10.14	9.83	10.2	271.4	475.7	331.2	465.6	360.1	5.99	7.08	6.3	6.61	6.1	41.5	-19.4	25.3	6.6	32.7	

Groundwater Monitoring Record Sheet																					
Conducted by											Approved by										
In-Situ Analyser, Downloaded by:											Name										
Name					Signed						Name					Signed					
Leslie Finnegan																					
Date	Temperature (°C)					Conductivity (mS/cm)					pH (pH units)					pHmV (mV)					
	MP1	MP2	MP4	MP6	MP7	MP1	MP2	MP4	MP6	MP7	MP1	MP2	MP4	MP6	MP7	MP1	MP2	MP4	MP6	MP7	
10.4	14.93	10.14	9.83	10.21	271.5	475.8	331	465.6	360.6	5.98	7.08	6.3	6.61	6.1	41.8	-19.5	25	6.7	32.6		
10.4	14.93	10.14	9.83	10.2	271.5	475.9	330.8	465.7	360.4	5.99	7.08	6.3	6.61	6.11	41.5	-19.5	25	6.7	32.3		
10.4	14.93	10.14	9.83	10.2	271.3	475.9	330.6	465.7	360.8	5.98	7.08	6.3	6.61	6.11	41.8	-19.6	25	6.7	32.3		
10.4	14.93	10.14	9.83	10.2	271.4	476	330.4	465.8	360	5.99	7.08	6.3	6.61	6.1	41.4	-19.5	25	6.7	32.6		
10.4	14.93	10.14	9.83	10.2	271.5	476.3	330.2	465.7	360.1	5.98	7.08	6.3	6.61	6.11	41.7	-19.7	25	6.7	32.3		
10.4	14.93	10.14	9.83	10.2	271.4	476.2	330	465.8	360.7	5.99	7.08	6.3	6.61	6.11	41.4	-19.7	25	6.3	32.2		
10.39	14.93	10.14	9.83	10.21	271.4	476.4	329.8	465.8	360.7	5.98	7.08	6.3	6.62	6.11	41.7	-19.8	25.4	6.2	32.2		
10.39	14.93	10.14	9.83	10.2	271.5	476.4	330	465.9	360.4	5.98	7.08	6.3	6.61	6.1	41.8	-19.7	25.1	6.5	32.7		
10.39	14.93	10.14	9.83	10.2	271.5	476.7	329.8	466	360.9	5.99	7.08	6.3	6.61	6.1	41.4	-19.7	25.1	6.6	32.5		
10.39	14.93	10.14	9.83	10.2	271.6	476.7	329.8	466	360.7	5.99	7.08	6.3	6.61	6.1	41.3	-19.7	25	6.2	32.6		
10.39	14.93	10.14	9.83	10.2	271.6	476.6	329.7	465.9	360.7	5.99	7.08	6.3	6.61	6.11	41.6	-19.9	25	6.6	32.3		
10.39	14.94	10.14	9.83	10.2	271.6	476.8	329.6	466	360.4	5.99	7.08	6.3	6.61	6.11	41.7	-19.8	25	6.6	32.2		
10.39	14.94	10.14	9.83	10.2	271.8	476.9	329.6	466.2	360	5.99	7.08	6.3	6.61	6.1	41.7	-19.9	25	6.6	32.7		
10.39	14.94	10.14	9.83	10.2	271.7	477	329.6	466.4	360	5.99	7.09	6.3	6.62	6.11	41.3	-20.1	24.9	6.2	32.3		
10.39	14.94	10.14	9.83	10.2	271.7	477.1	329.6	466.4	360.9	5.99	7.09	6.3	6.61	6.1	41.1	-20.1	25.2	6.5	32.8		
10.39	14.94	10.14	9.83	10.2	271.8	477.2	329.4	466.3	360.3	6	7.09	6.3	6.62	6.1	41.1	-20.2	25	6.2	32.8		
10.39	14.94	10.14	9.83	10.21	271.9	477.4	329.4	466.5	360.8	5.99	7.09	6.3	6.61	6.1	41.5	-20.1	24.8	6.5	32.7		
10.39	14.94	10.14	9.83	10.2	271.9	477.6	329.4	466.7	360.5	5.99	7.09	6.3	6.62	6.1	41.2	-20.3	25.1	6.2	32.6		
10.39	14.94	10.14	9.83	10.2	272	477.5	329.6	466.5	360.9	5.99	7.09	6.3	6.61	6.11	41.6	-20.1	24.8	6.5	32.3		
10.39	14.94	10.14	9.83	10.2	272.2	477.6	329.6	466.6	360.4	5.99	7.09	6.31	6.61	6.11	41.6	-20.3	24.7	6.5	32.3		
10.39	14.94	10.14	9.83	10.2	272.1	477.8	329.5	466.6	360.6	5.99	7.09	6.3	6.62	6.1	41.6	-20.4	25	6.2	32.7		
10.39	14.94	10.14	9.83	10.2	272.2	477.9	329.4	466.6	360.6	5.99	7.09	6.3	6.62	6.11	41.6	-20.3	25	6.1	32.3		
10.39	14.95	10.14	9.83	10.2	272.4	477.9	329.3	466.9	360.1	5.99	7.09	6.3	6.62	6.11	41.2	-20.3	25	6	32.3		
10.39	14.95	10.14	9.83	10.2	272.3	478.1	329.1	466.8	360.6	5.99	7.09	6.3	6.61	6.1	41.5	-20.3	25	6.5	32.7		
10.39	14.95	10.14	9.83	10.2	272.4	478.1	329	466.9	360.7	5.99	7.09	6.31	6.62	6.1	41.6	-20.4	24.7	6.2	32.7		
10.39	14.95	10.14	9.83	10.2	272.5	478.2	329.2	466.8	360	5.99	7.1	6.31	6.62	6.11	41.6	-20.6	24.6	6	32.3		
10.39	14.95	10.14	9.83	10.2	272.5	478.2	329.1	466.8	360.5	6	7.09	6.31	6.61	6.1	41.1	-20.4	24.5	6.4	32.6		
10.39	14.95	10.14	9.83	10.2	272.5	478.2	328.9	466.9	360.1	5.99	7.09	6.31	6.62	6.1	41.5	-20.4	24.8	6.1	32.7		
10.39	14.95	10.14	9.83	10.2	272.6	478.4	329	466.9	360.5	5.99	7.09	6.31	6.61	6.11	41.5	-20.5	24.5	6.5	32.3		
10.39	14.95	10.14	9.83	10.2	272.6	478.4	328.7	467	359.9	5.99	7.1	6.31	6.62	6.1	41.5	-20.7	24.8	6.1	32.7		
10.39	14.95	10.14	9.83	10.2	272.7	478.5	328.6	466.9	360.2	6	7.1	6.3	6.62	6.1	41.1	-20.8	24.8	6	32.6		
10.39	14.96	10.14	9.83	10.2	272.8	478.5	328.5	466.8	360.9	6	7.1	6.31	6.62	6.11	41	-20.8	24.5	6	32.3		
10.39	14.96	10.14	9.83	10.2	272.7	478.6	328.4	467.2	360.4	5.99	7.1	6.31	6.62	6.11	41.4	-20.8	24.4	5.9	32.3		
10.39	14.96	10.14	9.83	10.2	272.8	478.7	328.1	468.1	360.4	5.99	7.1	6.31	6.61	6.1	41.5	-20.9	24.4	6.3	32.7		
10.39	14.96	10.14	9.83	10.2	272.8	478.8	328.1	468.7	360.7	6	7.1	6.31	6.62	6.11	41.1	-20.9	24.4	6	32.3		
10.39	14.96	10.14	9.83	10.2	272.9	478.8	327.8	469.1	361	5.99	7.1	6.31	6.62	6.11	41.4	-20.8	24.4	5.9	32.3		
10.39	14.96	10.14	9.83	10.2	272.9	478.9	327.8	469.3	360.8	6	7.1	6.31	6.62	6.1	41.1	-20.9	24.4	5.9	32.5		
10.39	14.96	10.14	9.83	10.2	272.9	478.9	327.6	469.3	360.9	5.99	7.1	6.31	6.61	6.1	41.4	-20.9	24.7	6.3	32.8		
10.39	14.96	10.14	9.83	10.2	273	478.8	327.4	469.3	360.9	6	7.1	6.31	6.61	6.1	41	-20.8	24.7	6.3	32.6		
10.39	14.96	10.14	9.83	10.2	273	479	327.4	469.5	360	6	7.1	6.31	6.61	6.1	40.9	-20.8	24.4	6.3	32.8		
10.39	14.96	10.14	9.83	10.2	273	479.1	327.4	469.3	360.6	5.99	7.1	6.31	6.61	6.1	41.3	-20.8	24.7	6.3	32.7		
10.39	14.97	10.14	9.83	10.2	273.1	479.2	327.2	469.5	360.4	6	7.1	6.31	6.62	6.11	41	-21.1	24.7	6	32.3		
10.39	14.97	10.14	9.83	10.2	273.2	479.2	327	469.2	360	5.99	7.11	6.31	6.62	6.1	41.3	-21.1	24.7	5.9	32.6		
10.39	14.97	10.14	9.83	10.2	273.2	479.2	327	469.4	361	5.99	7.1	6.31	6.61	6.1	41.4	-21	24.7	6.3	32.6		
10.39	14.97	10.14	9.83	10.2	273.2	479.4	327.1	469.3	361	6	7.1	6.31	6.61	6.1	41	-21	24.4	6.3	32.7		
10.39	14.97	10.14	9.83	10.2	273.2	479.3	326.8	469.5	360.4	5.99	7.1	6.32	6.61	6.1	41.3	-21	24.3	6.3	32.7		
10.39	14.97	10.14	9.83	10.2	273.2	479.4	326.8	469.5	360.1	6	7.11	6.31	6.62	6.11	41	-21.2	24.5	6	32.3		
10.39	14.97	10.14	9.83	10.2	273.5	479.4	326.8	469.4	360.1	5.99	7.11	6.31	6.61	6.11	41.3	-21.2	24.4	6.3	32.3		
10.39	14.97	10.14	9.83	10.2	273.4	479.6	326.5	469.3	360.3	6	7.11	6.32	6.62	6.1	41	-21.3	24.2	6	32.5		

Groundwater Monitoring Record Sheet																				
Conducted by In-Situ Analyser, Downloaded by:											Approved by									
Name Leslie Finnegan					Signed						Name					Signed				
	Temperature (°C)					Conductivity (mS/cm)					pH (pH units)					pHmV (mV)				
Date	MP1	MP2	MP4	MP6	MP7	MP1	MP2	MP4	MP6	MP7	MP1	MP2	MP4	MP6	MP7	MP1	MP2	MP4	MP6	MP7
17/07/05	10.39	14.97	10.14	9.83	10.2	273.5	479.5	326.7	469.6	360.2	6	7.11	6.32	6.61	6.11	40.8	-21.4	24.2	6.3	32.3
	10.39	14.97	10.14	9.83	10.2	273.6	479.6	326.6	469.6	360.7	5.99	7.11	6.32	6.61	6.11	41.3	-21.4	24.1	6.3	32.3
	10.39	14.97	10.14	9.83	10.2	273.7	479.6	326.6	469.6	360.6	5.99	7.11	6.32	6.61	6.11	41.3	-21.2	24.1	6.3	32.1
	10.39	14.97	10.14	9.83	10.2	273.8	479.6	326.7	469.6	360.4	5.99	7.11	6.31	6.61	6.11	41.4	-21.4	24.4	6.3	32
	10.39	14.97	10.14	9.83	10.2	273.9	479.9	326.6	469.8	360.7	5.99	7.11	6.31	6.61	6.1	41.4	-21.3	24.5	6.3	32.6
	10.39	14.97	10.14	9.83	10.2	273.8	479.8	326.9	469.8	360.1	5.99	7.11	6.32	6.61	6.1	41.4	-21.5	24.2	6.3	32.7
	10.39	14.97	10.14	9.83	10.2	274	480	327	469.7	360.2	5.99	7.11	6.32	6.61	6.11	41.4	-21.4	24	6.3	32.3
	10.39	14.97	10.14	9.83	10.2	274	480	327.2	470	360.4	5.99	7.11	6.32	6.62	6.11	41.4	-21.4	23.9	5.9	32.2
	10.39	14.97	10.14	9.83	10.2	274	480	327.4	470	360.3	6	7.11	6.32	6.62	6.11	41.1	-21.5	24.2	6.2	32.1
	10.39	14.97	10.14	9.83	10.2	274.1	480.3	327.7	470	360.5	6	7.11	6.32	6.61	6.1	40.9	-21.5	23.9	6.3	32.7
	10.39	14.97	10.14	9.83	10.2	274.1	480.1	327.7	470	360.2	5.99	7.12	6.32	6.62	6.1	41.3	-21.8	24.2	5.9	32.6
	10.39	14.97	10.14	9.83	10.2	274.4	480.4	328.2	470.2	360.6	6	7.12	6.32	6.62	6.1	41.1	-21.8	24.2	5.8	32.7
	10.39	14.97	10.14	9.83	10.2	274.5	480.3	328.3	470.3	360.4	6	7.12	6.32	6.62	6.11	41	-22	23.8	5.7	32.3
	10.39	14.97	10.14	9.83	10.2	274.5	480.6	328.4	470.3	360.3	5.99	7.12	6.33	6.62	6.1	41.4	-22.2	23.7	5.7	32.5
	10.39	14.98	10.14	9.83	10.2	274.5	480.6	328.7	470.3	360.7	5.99	7.12	6.32	6.62	6.11	41.5	-22.1	24	5.7	32.3
	10.39	14.98	10.14	9.83	10.2	274.5	480.7	329	470.4	360.7	5.99	7.12	6.33	6.62	6.11	41.6	-22.2	23.7	6.2	32.2
	10.39	14.98	10.14	9.83	10.2	274.5	480.7	329	470.5	360.5	5.99	7.13	6.32	6.62	6.1	41.6	-22.4	23.9	5.8	32.5
	10.39	14.98	10.14	9.83	10.2	274.8	480.8	329.4	470.6	360.8	5.99	7.13	6.33	6.62	6.1	41.6	-22.3	23.6	6.2	32.6
	10.38	14.98	10.14	9.83	10.2	274.9	480.9	329.8	470.6	360.4	5.99	7.13	6.33	6.62	6.11	41.3	-22.4	23.5	5.8	32.3
	10.38	14.98	10.14	9.83	10.2	274.9	481.3	330.1	470.7	360.7	5.99	7.13	6.32	6.62	6.1	41.6	-22.5	23.8	6.2	32.6
	10.38	14.98	10.14	9.83	10.2	275.1	481.2	330.3	471	360.5	5.99	7.13	6.33	6.62	6.11	41.7	-22.6	23.5	6.2	32.3
	10.38	14.98	10.14	9.83	10.2	275.2	481.2	330.5	470.9	359.7	5.99	7.13	6.33	6.62	6.11	41.3	-22.7	23.4	6.2	32.2
	10.38	14.98	10.14	9.83	10.2	275.5	481.2	330.9	471.1	360.4	5.99	7.14	6.33	6.62	6.1	41.3	-22.9	23.7	6.2	32.5
	10.38	14.98	10.14	9.83	10.2	275.7	481.5	331.3	471.1	360.5	5.99	7.14	6.32	6.62	6.1	41.2	-23	23.7	5.9	32.6
	10.38	14.98	10.14	9.83	10.2	275.9	481.4	331.3	471.1	360.6	5.99	7.14	6.33	6.62	6.1	41.3	-22.9	23.4	5.7	32.7
	10.38	14.98	10.14	9.83	10.2	276.2	481.7	331.9	471.2	360	5.99	7.14	6.33	6.62	6.11	41.3	-23.1	23.7	6.1	32.3
	10.38	14.98	10.14	9.83	10.2	276.4	481.6	332	471.2	361	5.99	7.14	6.33	6.62	6.11	41.7	-23.1	23.4	5.8	32.3
	10.38	14.98	10.14	9.83	10.2	276.4	481.5	332	471.2	360.3	5.99	7.14	6.33	6.62	6.1	41.4	-23	23.3	5.7	32.6
	10.38	14.98	10.14	9.83	10.2	276.5	481.6	332.3	471.4	360.6	5.98	7.14	6.33	6.62	6.1	41.7	-23	23.6	6.1	32.7
	10.38	14.99	10.14	9.83	10.2	276.7	481.9	332.4	471.5	360.6	5.98	7.14	6.33	6.62	6.1	41.9	-23	23.3	5.7	32.7
	10.38	14.99	10.14	9.83	10.2	276.6	481.8	332.6	471.3	360	5.98	7.14	6.33	6.62	6.11	41.9	-23.2	23.2	6.1	32.3
	10.38	14.99	10.14	9.83	10.2	276.7	481.9	332.5	471.3	360.2	5.99	7.14	6.33	6.62	6.11	41.5	-23.3	23.1	5.8	32.2
10.38	14.99	10.14	9.83	10.2	276.7	482	332.8	471.3	360.7	5.98	7.14	6.33	6.63	6.1	41.8	-23.1	23.1	5.7	32.6	
10.38	14.99	10.15	9.83	10.2	276.7	482	332.7	471.4	361	5.99	7.14	6.34	6.62	6.1	41.4	-23.1	23.1	6	32.7	
10.38	14.99	10.15	9.83	10.2	276.9	482.1	332.7	471.2	360.9	5.99	7.14	6.34	6.62	6.1	41.7	-23.1	23.1	5.7	32.7	
10.38	14.99	10.15	9.83	10.2	277	482	332.7	471.2	360.5	5.98	7.14	6.33	6.63	6.11	41.7	-23.3	23.4	5.7	32.3	
10.38	14.99	10.15	9.83	10.2	277	482.3	332.4	471.4	359.5	5.99	7.14	6.33	6.62	6.1	41.3	-23.4	23.2	6	32.6	
10.38	14.99	10.15	9.83	10.2	277	482.1	332.3	471	360	5.99	7.15	6.34	6.62	6.1	41.6	-23.4	23.1	6.1	32.7	
10.38	14.99	10.15	9.83	10.2	277.1	482.3	332.1	471.2	359.9	5.99	7.14	6.33	6.62	6.11	41.6	-23.3	23.4	5.7	32.3	
10.38	14.99	10.15	9.83	10.2	277.2	482.3	332	471.4	360.8	5.99	7.14	6.33	6.62	6.1	41.6	-23.2	23.1	6	32.7	
10.38	14.99	10.15	9.83	10.2	277.1	482.2	331.9	471.3	360.5	5.99	7.14	6.33	6.62	6.11	41.3	-23.3	23.4	5.7	32.3	
10.38	14.99	10.15	9.83	10.2	277.4	482.4	331.6	471.3	360.5	5.99	7.15	6.33	6.63	6.11	41.6	-23.4	23.5	5.6	32.2	
10.38	15	10.15	9.83	10.2	277.5	482.2	331.5	471.5	360	5.99	7.15	6.33	6.62	6.11	41.2	-23.4	23.2	6	32.1	
10.38	15	10.15	9.83	10.2	277.6	482.4	331.5	471.4	360.5	6	7.14	6.34	6.62	6.11	41.1	-23.3	23.1	5.7	32.1	
10.38	15	10.15	9.83	10.2	277.6	482.3	331.6	471.6	360.7	6	7.15	6.33	6.62	6.11	41.1	-23.4	23.4	6	32.1	
10.38	15	10.15	9.83	10.2	277.7	482.4	331.6	471.7	360.5	6	7.14	6.33	6.62	6.1	41.1	-23.3	23.1	5.7	32.5	
10.38	15	10.15	9.83	10.2	277.6	482.5	331.7	471.7	360.4	6	7.15	6.34	6.63	6.11	41.1	-23.4	23.1	5.6	32.3	
10.38	15	10.15	9.83	10.2	277.7	482.4	331.8	471.8	360.6	6	7.14	6.33	6.62	6.1	41.1	-23.3	23.4	6	32.7	
10.38	15	10.15	9.83	10.2	277.6	482.3	331.8	472	360.1	5.99	7.15	6.33	6.62	6.1	41.1	-23.5	23.4	6	32.7	

17/07/05

Groundwater Monitoring Record Sheet																					
Conducted by In-Situ Analyser, Downloaded by:											Approved by										
Name Leslie Finnegan					Signed						Name					Signed					
	Temperature (°C)					Conductivity (mS/cm)					pH (pH units)					pHmV (mV)					
Date	MP1	MP2	MP4	MP6	MP7	MP1	MP2	MP4	MP6	MP7	MP1	MP2	MP4	MP6	MP7	MP1	MP2	MP4	MP6	MP7	
10.38	15	10.15	9.83	10.2	277.8	482.3	331.9	472.1	360.4	5.99	7.15	6.33	6.62	6.1	41.6	-23.6	23.4	6	32.8		
10.38	15	10.15	9.83	10.2	277.8	482.6	332.1	472.2	360.8	5.99	7.15	6.33	6.62	6.1	41.3	-23.6	23.4	6	32.7		
10.38	15	10.15	9.83	10.2	277.9	482.5	332.1	472.4	360.1	5.99	7.15	6.33	6.63	6.1	41.3	-23.4	23.4	5.7	32.6		
10.38	15	10.15	9.83	10.2	278	482.4	332.4	472.6	360.8	5.99	7.15	6.33	6.63	6.1	41.2	-23.4	23.4	5.6	32.7		
10.38	15	10.15	9.83	10.2	277.9	482.5	332.6	472.8	360.1	5.99	7.15	6.33	6.62	6.11	41.2	-23.4	23.3	5.9	32.3		
10.38	15	10.15	9.83	10.2	278	482.7	332.8	473	359.6	5.99	7.15	6.34	6.62	6.11	41.6	-23.6	23	6	32.2		
10.38	15	10.15	9.83	10.2	278	482.6	333.2	473.2	360.9	5.98	7.15	6.34	6.63	6.11	41.7	-23.6	22.9	5.7	32.2		
10.38	15	10.15	9.83	10.2	278.2	482.8	333.3	473.4	360.7	5.98	7.15	6.34	6.63	6.11	41.7	-23.7	22.8	5.6	32.1		
10.38	15	10.15	9.83	10.2	278.4	482.7	333.7	473.8	360.1	5.99	7.15	6.33	6.63	6.1	41.4	-23.7	23.1	5.6	32.7		
10.38	15	10.15	9.83	10.2	278.3	482.6	334	474	360.2	5.99	7.15	6.34	6.62	6.1	41.3	-23.7	22.9	5.9	32.6		
10.38	15	10.15	9.83	10.2	278.5	482.8	334.4	474.5	360.7	5.99	7.15	6.34	6.63	6.11	41.7	-23.6	22.8	5.6	32.3		
10.38	15	10.15	9.83	10.2	278.4	483	334.7	474.8	360.9	5.99	7.15	6.34	6.62	6.11	41.4	-23.7	23.1	6	32.2		
10.38	15	10.15	9.83	10.2	278.4	483.3	335	475.1	360.9	5.99	7.15	6.34	6.63	6.1	41.7	-23.6	23.1	5.6	32.5		
10.38	15	10.15	9.83	10.2	278.4	483.1	335.5	475.1	360.2	5.98	7.15	6.34	6.62	6.1	41.7	-23.6	22.8	5.9	32.5		
10.38	15	10.15	9.83	10.2	278.5	483.1	336.1	475.4	360.8	5.99	7.15	6.34	6.63	6.11	41.4	-23.6	22.6	5.6	32.3		
10.38	15	10.15	9.83	10.2	278.4	483.1	336.8	475.5	360.7	5.99	7.15	6.34	6.62	6.11	41.7	-23.6	22.9	5.9	32.2		
10.38	15	10.15	9.83	10.2	278.4	483.2	337.1	475.6	360.3	5.99	7.15	6.34	6.62	6.1	41.4	-23.6	23	6	32.6		
10.38	15	10.15	9.83	10.2	278.6	483.2	337.3	476.1	360.6	5.99	7.15	6.34	6.63	6.1	41.7	-23.8	22.7	5.6	32.6		
10.38	15	10.15	9.83	10.2	278.5	483.2	337.7	476.1	360.4	5.98	7.15	6.34	6.63	6.11	41.7	-23.7	22.6	5.6	32.4		
10.38	15	10.15	9.83	10.2	278.5	483.4	338.1	476.1	360.6	5.98	7.15	6.35	6.63	6.1	41.7	-23.7	22.5	5.5	32.7		
10.38	15	10.15	9.83	10.2	278.4	483.4	338.3	476.5	360.3	5.98	7.15	6.35	6.63	6.1	41.7	-23.9	22.5	5.5	32.7		
10.38	15	10.15	9.83	10.2	278.2	483.4	338.5	476.5	360.5	5.98	7.15	6.35	6.63	6.1	41.7	-23.8	22.5	5.4	32.6		
10.38	15	10.15	9.83	10.2	278.1	483.4	338.8	476.7	360.7	5.99	7.16	6.35	6.63	6.11	41.4	-24	22.5	5.4	32.3		
10.38	15	10.15	9.83	10.2	278.1	483.7	338.8	476.8	360.6	5.99	7.15	6.35	6.62	6.1	41.3	-23.9	22.5	5.9	32.6		
10.38	15	10.15	9.83	10.2	278.2	483.5	339.1	476.8	360.6	5.99	7.16	6.35	6.62	6.11	41.6	-24	22.5	5.9	32.2		
10.38	15	10.15	9.83	10.2	278.2	483.7	339.2	477	360.7	5.99	7.16	6.35	6.62	6.1	41.4	-24	22.5	5.9	32.7		
10.38	15	10.15	9.83	10.2	278.2	483.8	339.3	476.9	360.8	5.99	7.15	6.35	6.62	6.1	41.3	-23.9	22.5	5.9	32.7		
10.38	15	10.15	9.83	10.2	278.1	483.8	339.5	477.1	360.7	5.99	7.15	6.35	6.62	6.1	41.2	-23.9	22.4	5.9	32.7		
10.38	15	10.15	9.83	10.2	277.9	483.7	339.5	477.1	360.1	5.99	7.16	6.35	6.63	6.11	41.6	-24	22.4	5.6	32.2		
10.38	15.01	10.15	9.83	10.2	278	483.9	339.6	477.2	360.2	5.98	7.15	6.35	6.62	6.11	41.7	-23.9	22.4	5.9	32.2		
10.38	15.01	10.16	9.83	10.2	278	484	339.7	477.2	360.2	5.99	7.15	6.34	6.62	6.1	41.4	-23.9	22.7	5.9	32.6		
10.38	15.01	10.16	9.83	10.2	277.9	483.8	339.9	477.2	360.4	5.99	7.15	6.34	6.62	6.1	41.6	-23.9	22.8	5.9	32.7		
10.38	15.01	10.16	9.83	10.2	278	483.9	339.9	477.3	360.8	5.99	7.16	6.35	6.63	6.11	41.7	-24	22.5	5.6	32.3		
10.38	15.01	10.16	9.83	10.2	278	483.8	339.6	477.4	360.9	5.99	7.16	6.34	6.63	6.1	41.6	-24.1	22.7	5.4	32.5		
10.38	15.01	10.16	9.83	10.2	277.8	483.9	339.8	477.5	360.5	5.99	7.16	6.34	6.62	6.11	41.6	-24	22.8	5.8	32.3		
10.38	15.01	10.16	9.83	10.2	277.7	483.9	339.6	477.6	360.6	5.99	7.16	6.35	6.63	6.11	41.6	-24	22.5	5.5	32.2		
10.38	15.01	10.16	9.83	10.2	277.8	484	339.8	477.5	360.8	5.99	7.16	6.34	6.63	6.11	41.2	-24.1	22.7	5.4	32.1		
10.38	15.01	10.16	9.83	10.2	277.4	483.9	339.5	477.9	360.6	6	7.16	6.35	6.62	6.11	41.1	-24	22.4	5.8	32.2		
10.38	15.01	10.16	9.83	10.2	277.5	484	339.8	477.9	360.3	5.99	7.16	6.34	6.63	6.11	41.4	-24	22.7	5.5	32.1		
10.38	15.01	10.16	9.83	10.2	277.4	484	339.8	478	360.4	5.99	7.16	6.35	6.63	6.1	41.6	-24	22.4	5.4	32.5		
10.38	15.01	10.16	9.83	10.2	277.4	484	340	478.2	359.9	5.99	7.16	6.34	6.63	6.1	41.2	-24	22.6	5.4	32.6		
10.38	15.01	10.16	9.83	10.2	277.2	484	340	478.4	360.2	5.99	7.16	6.35	6.62	6.11	41.5	-24	22.4	5.8	32.3		
10.38	15.01	10.16	9.83	10.2	277.2	484.1	340.3	478.5	360.3	5.99	7.16	6.34	6.63	6.11	41.2	-24.2	22.6	5.5	32.2		
10.38	15.01	10.16	9.83	10.2	277.3	484.1	340.5	478.5	360.7	6	7.16	6.35	6.63	6.1	41	-24.2	22.3	5.4	32.6		
10.38	15.01	10.16	9.83	10.2	277.2	484.2	340.7	478.8	360	5.99	7.16	6.35	6.63	6.11	41.4	-24.3	22.3	5.4	32.3		
10.38	15.01	10.16	9.83	10.2	277.2	484.1	340.7	479.1	360.6	5.99	7.16	6.35	6.63	6.11	41.5	-24.3	22.5	5.4	32.2		
10.38	15.01	10.16	9.83	10.2	277.2	484.1	340.8	479.1	360.3	5.99	7.16	6.35	6.62	6.1	41.6	-24.3	22.3	5.7	32.5		
10.38	15.01	10.16	9.83	10.2	277.2	484.1	341.1	479.5	360.2	5.99	7.16	6.35	6.63	6.11	41.6	-24.3	22.2	5.5	32.3		
10.38	15.01	10.16	9.84	10.2	277.1	484.1	341.4	479.6	360.3	5.99	7.16	6.35	6.62	6.1	41.3	-24.3	22.2	5.8	32.6		

Groundwater Monitoring Record Sheet																					
Conducted by In-Situ Analyser, Downloaded by:											Approved by										
Name Leslie Finnegan					Signed						Name					Signed					
	Temperature (°C)					Conductivity (mS/cm)					pH (pH units)					pHmV (mV)					
Date	MP1	MP2	MP4	MP6	MP7	MP1	MP2	MP4	MP6	MP7	MP1	MP2	MP4	MP6	MP7	MP1	MP2	MP4	MP6	MP7	
18/07/05	10.38	15.01	10.16	9.83	10.2	277	484	341.8	479.8	360	5.99	7.16	6.35	6.62	6.11	41.6	-24.3	22.1	5.9	32.3	
	10.38	15.01	10.16	9.83	10.2	277.1	484.3	342.2	479.9	360.7	5.98	7.16	6.35	6.63	6.11	41.7	-24.4	22.5	5.5	32.2	
	10.38	15.01	10.16	9.83	10.2	277.1	484.3	342.6	480.3	359.9	5.98	7.16	6.35	6.63	6.11	41.8	-24.2	22.2	5.4	32	
	10.38	15.01	10.16	9.84	10.2	277	484.2	343.1	480.4	360.4	5.99	7.16	6.35	6.63	6.11	41.5	-24.1	22.1	5.4	32.2	
	10.38	15.01	10.16	9.83	10.2	276.9	484.3	343.7	480.8	359.5	5.99	7.16	6.35	6.62	6.11	41.4	-24.1	22.4	5.7	32.2	
	10.38	15.01	10.16	9.83	10.2	276.9	484.4	344.3	480.8	361.2	5.98	7.16	6.35	6.62	6.1	41.8	-24.1	22.5	5.8	32.5	
	10.38	15.01	10.16	9.84	10.2	276.8	484.4	345	481.2	360.2	5.98	7.16	6.35	6.62	6.11	41.9	-24.1	22.2	5.8	32.2	
	10.38	15.01	10.16	9.83	10.2	276.8	484.5	345.4	481.2	360.5	5.98	7.16	6.35	6.62	6.1	42	-24.1	22.3	5.8	32.5	
	10.38	15.01	10.16	9.84	10.2	276.8	484.6	346.2	481.5	361	5.99	7.16	6.35	6.62	6.11	41.7	-24.1	22.4	5.8	32.3	
	10.38	15.01	10.16	9.83	10.2	276.9	484.8	346.9	481.8	360.5	5.99	7.16	6.35	6.63	6.1	41.6	-24.1	22.4	5.4	32.5	
	10.38	15.01	10.16	9.84	10.2	276.8	484.7	347.7	481.8	361	5.99	7.16	6.35	6.63	6.1	41.5	-24.3	22.4	5.4	32.7	
	10.38	15.01	10.16	9.83	10.2	276.9	484.8	348.6	481.8	360.5	5.99	7.16	6.35	6.62	6.11	41.5	-24.4	22.1	5.7	32.3	
	10.38	15.01	10.16	9.84	10.2	276.9	485	349.3	482.2	360.3	5.99	7.16	6.35	6.63	6.11	41.5	-24.2	22.3	5.4	32.2	
	10.38	15.01	10.16	9.83	10.2	276.7	485.1	350	482.4	360.8	5.98	7.16	6.35	6.63	6.11	41.9	-24.3	22	5.3	32.1	
	10.38	15.01	10.16	9.83	10.2	276.7	485.2	350.7	482.4	360.7	5.99	7.16	6.36	6.62	6.11	41.7	-24.4	21.9	5.7	32	
	10.38	15.01	10.16	9.84	10.2	276.9	485.3	351.4	482.6	360.5	5.99	7.16	6.36	6.62	6.1	41.6	-24.4	21.9	5.7	32.7	
	10.38	15.01	10.16	9.84	10.2	276.8	485.4	352	483	360.7	5.98	7.16	6.35	6.62	6.11	41.9	-24.2	22.2	5.8	32.2	
	10.38	15.01	10.16	9.84	10.2	276.9	485.5	352.7	483.2	360.5	5.99	7.16	6.35	6.62	6.11	41.7	-24.4	22.2	5.8	32.2	
	10.38	15.01	10.16	9.84	10.2	276.7	485.6	353.4	483.3	359.8	5.99	7.16	6.36	6.63	6.1	41.6	-24.4	22	5.4	32.5	
	10.38	15.01	10.16	9.83	10.2	276.8	485.8	354.1	483.6	360.2	5.98	7.16	6.35	6.63	6.11	42	-24.2	22.2	5.3	32.2	
	10.37	15.01	10.16	9.84	10.2	276.8	486	355.1	483.7	360.4	5.98	7.16	6.36	6.63	6.11	42.1	-24.4	21.9	5.7	32.2	
	10.37	15.01	10.16	9.84	10.2	276.8	486.4	355.4	483.8	360.4	5.98	7.16	6.35	6.63	6.11	42.1	-24.3	22.2	5.4	32.2	
	10.38	15.01	10.16	9.84	10.2	276.8	486.6	354.4	484	360.7	5.98	7.16	6.36	6.63	6.1	41.7	-24.3	21.9	5.2	32.5	
	10.44	15.01	10.17	9.83	10.2	276.2	486.8	354.3	484.1	360.7	5.98	7.16	6.36	6.63	6.1	42.1	-24.3	21.8	5.2	32.7	
	10.49	15.01	10.17	9.83	10.2	275.9	486.8	354.4	484.2	360.8	5.98	7.16	6.36	6.63	6.1	41.7	-24.5	21.7	5.2	32.7	
	10.53	15.01	10.17	9.84	10.2	275.8	486.8	354.8	484.3	360.7	5.99	7.17	6.35	6.63	6.11	41.6	-24.5	22	5.6	32.3	
	10.56	15.01	10.17	9.83	10.2	275.5	487.2	355.2	484.5	360.7	6	7.17	6.35	6.63	6.1	41.2	-24.6	22.2	5.3	32.5	
	10.57	15.01	10.17	9.83	10.2	275.4	487.1	355.4	484.4	360.3	6	7.17	6.35	6.63	6.11	41	-24.6	22.1	5.6	32.2	
	10.59	15.02	10.17	9.84	10.2	275.4	487.3	355.6	484.4	361.1	6	7.16	6.35	6.63	6.11	41.1	-24.5	22.1	5.3	32.1	
	10.61	15.02	10.17	9.83	10.2	275.2	487.3	355.7	484.5	360.4	6	7.17	6.35	6.63	6.11	41	-24.6	22.1	5.6	32	
	10.61	15.02	10.17	9.83	10.2	275.2	487.4	356.2	484.5	360.3	6.01	7.16	6.36	6.63	6.1	40.3	-24.5	21.8	5.2	32.5	
	10.62	15.02	10.17	9.84	10.2	275.2	487.6	356.4	484.7	360.5	6.02	7.16	6.36	6.63	6.11	40	-24.4	22	5.6	32.3	
10.61	15.02	10.17	9.84	10.2	275.1	487.6	356.4	484.6	360.4	6.03	7.16	6.36	6.63	6.11	39.4	-24.4	21.8	5.2	32.1		
10.62	15.02	10.18	9.83	10.2	275.1	487.8	356	484.5	360.8	6.03	7.17	6.36	6.63	6.11	39.2	-24.6	21.7	5.6	32.2		
10.64	15.02	10.18	9.83	10.2	275.2	487.7	355.9	484.6	360.4	6.02	7.17	6.36	6.63	6.1	39.7	-24.7	22	5.2	32.5		
10.65	15.02	10.18	9.83	10.2	275.2	488	355.9	484.7	360.7	6.02	7.17	6.36	6.63	6.11	39.6	-24.7	21.7	5.2	32.3		
10.67	15.02	10.18	9.83	10.2	275.2	487.8	355.8	484.7	360.7	6.01	7.17	6.36	6.63	6.1	40.2	-24.7	21.6	5.6	32.5		
10.69	15.02	10.18	9.84	10.2	275.3	487.9	356	484.6	360.2	6.01	7.17	6.36	6.63	6.11	40.3	-24.8	21.6	5.2	32.2		
10.71	15.03	10.18	9.83	10.2	275.4	487.9	356	484.6	360.4	6.01	7.17	6.36	6.63	6.1	40.5	-24.6	21.9	5.6	32.7		
10.73	15.03	10.18	9.83	10.2	275.4	488	355.7	484.6	360.8	6.01	7.17	6.36	6.63	6.1	40.3	-24.6	21.7	5.2	32.7		
10.74	15.03	10.18	9.83	10.2	275.5	488.1	355.7	484.8	360.4	6.01	7.17	6.36	6.63	6.1	40.6	-24.6	21.6	5.6	32.7		
10.77	15.03	10.18	9.84	10.2	275.5	488	355.5	484.7	360.6	6.01	7.17	6.36	6.63	6.1	40.3	-24.6	21.9	5.2	32.7		
10.79	15.03	10.18	9.84	10.2	275.6	488.2	355.7	484.6	360.7	6.01	7.17	6.36	6.63	6.11	40.6	-24.6	21.6	5.5	32.2		
10.82	15.03	10.18	9.84	10.2	275.6	488	355.7	484.7	360.1	6.01	7.17	6.36	6.63	6.1	40.6	-24.8	21.5	5.6	32.6		
10.84	15.03	10.18	9.84	10.2	275.7	488.3	355.8	484.7	360.1	6.01	7.17	6.36	6.63	6.11	40.6	-24.8	21.9	5.2	32.3		
10.86	15.03	10.18	9.84	10.2	275.8	488.2	355.4	484.7	360.7	6.01	7.17	6.36	6.63	6.11	40.6	-24.7	21.6	5.5	32.2		
10.89	15.03	10.18	9.84	10.2	275.8	488.2	355.4	484.8	360.6	6.01	7.17	6.36	6.63	6.1	40.6	-24.7	21.5	5.2	32.5		
10.91	15.03	10.19	9.84	10.2	276	488.2	355.4	484.9	360.5	6.01	7.17	6.36	6.63	6.1	40.3	-24.7	21.5	5.5	32.7		
10.93	15.03	10.19	9.84	10.2	276	488.2	355.3	484.8	360.3	6	7.17	6.36	6.63	6.1	40.8	-24.7	21.4	5.2	32.7		

18/07/05

Groundwater Monitoring Record Sheet																					
Conducted by In-Situ Analyser, Downloaded by:											Approved by										
Name Leslie Finnegan					Signed						Name					Signed					
Date	Temperature (°C)					Conductivity (mS/cm)					pH (pH units)					pHmV (mV)					
	MP1	MP2	MP4	MP6	MP7	MP1	MP2	MP4	MP6	MP7	MP1	MP2	MP4	MP6	MP7	MP1	MP2	MP4	MP6	MP7	
	10.95	15.03	10.19	9.84	10.2	276	488	355.4	484.9	360.4	6	7.17	6.37	6.63	6.1	41.2	-24.8	21.4	5.5	32.6	
	10.97	15.04	10.19	9.84	10.2	276	488	355.5	484.8	360.4	6	7.17	6.36	6.63	6.11	41	-24.7	21.8	5.6	32.1	
	10.98	15.04	10.19	9.84	10.2	276.2	488.2	355.2	484.8	360.4	5.99	7.17	6.36	6.63	6.1	41.4	-24.8	21.8	5.6	32.7	
	10.99	15.04	10.19	9.84	10.2	276.1	488.3	355.3	484.8	360.5	5.99	7.17	6.36	6.63	6.1	41.4	-24.9	21.9	5.2	32.5	
	11	15.04	10.19	9.84	10.2	276.1	488.2	355.3	485	360.6	6	7.17	6.36	6.64	6.11	41.1	-24.7	21.8	5.1	32.2	
	11	15.04	10.19	9.83	10.2	276	488.3	355.3	485	360.4	5.99	7.17	6.36	6.64	6.11	41.4	-24.9	21.8	5.1	32.2	
	11	15.04	10.19	9.84	10.2	276	488.4	355.4	485	360.5	5.99	7.17	6.36	6.63	6.1	41.4	-24.8	21.5	5.4	32.5	
	11	15.04	10.19	9.84	10.2	276	488.4	355.2	484.9	360.8	5.99	7.17	6.37	6.63	6.11	41.4	-24.9	21.4	5.1	32.2	
	11	15.04	10.19	9.84	10.2	276	488.5	355.4	485	361.1	5.99	7.17	6.37	6.63	6.11	41.4	-24.8	21.4	5.4	32.2	
	10.99	15.04	10.19	9.84	10.2	276	488.5	355.5	485	360.5	5.99	7.17	6.36	6.64	6.11	41.4	-24.9	21.7	5.1	32	
	10.99	15.04	10.19	9.84	10.2	275.9	488.4	355.7	485	360.7	6	7.17	6.36	6.63	6.11	41	-25	21.7	5.4	32.1	
	10.99	15.04	10.19	9.84	10.2	275.9	488.5	356	484.8	360.7	6	7.17	6.37	6.64	6.11	40.9	-25	21.4	5.1	32	
	10.99	15.04	10.19	9.84	10.2	276.1	488.4	356	485.1	360.6	6	7.17	6.36	6.64	6.11	40.8	-25	21.7	5	32.1	
	10.98	15.04	10.19	9.84	10.2	276	488.5	356.1	485.2	360.8	6	7.17	6.37	6.63	6.1	41.3	-24.8	21.4	5.4	32.5	
	10.98	15.04	10.19	9.84	10.2	276	488.5	356.6	485.4	360.8	6	7.17	6.36	6.64	6.11	41	-25	21.6	5.1	32.2	
	10.98	15.04	10.19	9.84	10.2	276	488.4	356.7	485.4	360.7	6	7.17	6.36	6.64	6.1	40.9	-25	21.7	5	32.5	
	10.98	15.04	10.19	9.84	10.2	276	488.7	356.9	485.2	361.2	6	7.17	6.36	6.63	6.1	41.3	-25	21.7	5.4	32.6	
	10.97	15.04	10.19	9.84	10.2	276	488.6	357.3	485.4	360.9	6	7.17	6.36	6.63	6.1	41	-25	21.6	5.4	32.6	
	10.97	15.04	10.19	9.84	10.2	276	488.8	357.6	485.6	360.3	5.99	7.17	6.37	6.64	6.1	41.3	-25	21.3	5.1	32.6	
	10.97	15.04	10.19	9.84	10.2	276.1	488.8	357.5	485.4	360.5	6	7.17	6.36	6.63	6.1	41	-25	21.5	5.4	32.7	
	10.97	15.04	10.19	9.84	10.2	276.1	488.8	357.4	485.6	361	6	7.17	6.36	6.63	6.11	40.8	-24.8	21.6	5.4	32.4	

	Air Temp Avg. (°C)	Relative Humidity Avg. (%)	Wind Speed Avg. (m/s)	Wind Direction Avg. (°)	Sunshine Total (Hours)	Rainfall Total (mm)
01/07/2005	13.7	88.2	2.2	124	1.3	1.6
02/07/2005	14.7	87.3	6.5	133	1.3	2.6
03/07/2005	12.9	73.8	5.2	65	2.6	0.8
04/07/2005	12.9	76.8	3.2	74	2.7	1.0
05/07/2005	13.3	92.6	4.4	115	0.4	8.4
06/07/2005	12.4	88.7	4.8	118	0.6	4.6
07/07/2005	13.9	93.4	2.9	87	1.1	0.8
08/07/2005	15.2	94.6	2.2	54	1.3	5.8
09/07/2005	16.1	90.9	2.5	47	1.9	0.4
10/07/2005	16.8	87.9	1.9	113	3.2	0.2
11/07/2005	18.0	83.8	1.8	177	3.0	0.0
12/07/2005	15.4	88.3	1.9	167	2.3	0.0
13/07/2005	15.3	88.9	1.6	143	1.8	0.0
14/07/2005	14.5	90.7	3.9	55	0.9	2.0

28.2

01-Jul-05	1.6
02-Jul-05	2.6
03-Jul-05	0.8
04-Jul-05	1.0
05-Jul-05	8.4
06-Jul-05	4.6
07-Jul-05	0.8
08-Jul-05	5.8
09-Jul-05	0.4
10-Jul-05	0.2
11-Jul-05	0.0
12-Jul-05	0.0
13-Jul-05	0.0
14-Jul-05	2.0

28.2