

Interim Environmental ReportPeriod Ending: 30th April 2008

Compiled By: Siobhan Quinn, Aoife Reynolds & Thomas McGlynn

Approved By: Tony Doyle

1 Monitoring Data

1.1 Monitoring Equipment

| | |
|-----------------|--|
| Axonics | – Axonics plant operated as required during the reporting period. |
| PO ₄ | – The PO ₄ analyser was operational for the majority of the reporting period. The laboratory (CLS) has been requested to carry out analysis for orthophosphate on the composite samples from the 11 th of April to the 22 nd April. |
| TSS | – The TSS analyser was operational during the reporting period. – The composite sampler is in place to cover any shortfalls in the TSS analyser. |
| Composite | – The composite sampler was operational during the reporting period. |
| Noise | – There is a single noise monitoring location currently being used – N1. – The other location is visible from off-site and because of current protestor action it cannot be guaranteed that the equipment remains undisturbed. |
| Vibration | – There is a single vibration monitoring location currently being used – V1. – The other location is visible from off-site and because of current protestor action it cannot be guaranteed that the equipment remains undisturbed. |
| Sondes | – The results are displayed graphically. ○ Any unusual values are explained on the relevant graph. |
| Weather Station | – The data used for this reporting period was taken from the on-site meteorological station. |
| Weirs | – Data displayed in the enclosed report. |

1.2 Rainfall Data

| | | | |
|-----------------------|------|------------|-------|
| 17/04/2008 | 0.00 | 24/04/2008 | 1.18 |
| 18/04/2008 | 0.00 | 25/04/2008 | 5.85 |
| 19/04/2008 | 0.00 | 26/04/2008 | 7.22 |
| 20/04/2008 | 0.20 | 27/04/2008 | 13.07 |
| 21/04/2008 | 0.00 | 28/04/2008 | 2.34 |
| 22/04/2008 | 3.20 | 29/04/2008 | 0.39 |
| 23/04/2008 | 0.60 | 30/04/2008 | 13.07 |
| Total Rainfall 47.1mm | | | |

| | |
|-------------------------------------|---|
| Interim Environmental Report | Period Ending: 30 th April 2008 |
| Compiled By: | Siobhan Quinn, Aoife Reynolds & Thomas McGlynn |
| Approved By: | Tony Doyle |

1.3 Summary

| Environment | Comments |
|---------------|---|
| Surface Water | There was no exceedance during the reporting period. |
| Groundwater | The groundwater data (Sonde) is within anticipated ranges. |
| Dust | Dust results returned were in exceedance however this is under investigation. |
| Weather | There was a total of 47.1mm of rainfall during the reporting period, with a temperature range of -0.9°C to 15.3°C |
| Noise | No noise exceedance was recorded during the reporting period, based on the available results. |
| Vibration | No vibration exceedances were recorded during the reporting period, based on the available results |

Note: All laboratory data generated on site should be considered indicative only.

2 Environmental Exceedences / Incidents / Complaints

There was no exceedance during the reporting period.

| Surface Water Monitoring Record Sheet | | | | | | | | | | | | | | | | | | |
|--|------------|----------------|------------|------------------|-------------|----------------|---------------------------|---|------------------------------------|---|---|--|---|--|--|---|---------------------------|-----|
| | Date | Cond. µS/cm | Temp °C | Turbidity NTU | DO % Sat | pH pH units | TSS mg l ⁻¹ | Ortho- phosphate as P µg l ⁻¹ | Nitrate as N mg l ⁻¹ | Nitrate as NO ₃ mg l ⁻¹ | Total Phosphorus as P mg l ⁻¹ | Ammonia as NH ₃ -N mg l ⁻¹ | Nitrite as NO ₂ mg l ⁻¹ | Aluminium (dissolved) µg l ⁻¹ | Aluminium (total) µg l ⁻¹ | Phosphate as PO ₄ -P mg l ⁻¹ | TDS mg l ⁻¹ | |
| Action Limits | | 400 | | 150 | | <3.5 or >7.5 | 25 | 40 | 1.5 | 4.0 | | 0.2 | 0.025 | 100 | 135 | | | |
| Target Limits | | 500 | | 200 | | <3 or >8 | 35 | 70 | 2.6 | 6.0 | | 0.5 | 0.05 | 150 | 200 | | | |
| Settlement Pond Monitoring | | | | | | | | | | | | | | | | | | |
| SP1 | 17/04/2008 | 386 | 8.7 | 19 | 96.9 | 7.0 | | | 0.3 | | | 0.070 | | 13 | 103 | 0.160 | 251 | |
| SP1 | 18/04/2008 | 384 | 8.9 | 16 | 101.8 | 6.9 | | | 0.3 | | | <LOD | | 3 | 58 | 0.010 | 261 | |
| SP1 | 21/04/2008 | 404 | 8.0 | 12 | 104.5 | 7.8 | | | 0.4 | | | <LOD | | 21 | 124 | 0.010 | 269 | |
| SP1 | 22/04/2008 | 384 | 8.0 | 10 | 103.0 | 6.3 | | | 0.1 | | | 0.140 | | 6 | 80 | 0.080 | 239 | |
| SP1 | 23/04/2008 | 390 | 11.5 | 6 | 105.6 | 6.5 | | | 0.4 | | | <LOD | | 5 | 68 | 0.020 | 257 | |
| SP1 | 24/04/2008 | 396 | 11.3 | 7 | 104.8 | 7.5 | | | 0.3 | | | 0.050 | | 16 | 58 | 0.050 | 255 | |
| SP1 | 25/04/2008 | 384 | 11.3 | 5 | 103.7 | 6.7 | | | 0.2 | | | 0.100 | | 6 | 663 | 0.020 | 266 | |
| SP1 | 28/04/2008 | 393 | 12.3 | 5 | 104.3 | 6.6 | | | <LOD | | | 0.490 | | 26 | 101 | 0.060 | 235 | |
| SP1 | 29/04/2008 | 321 | 11.0 | 9 | 101.8 | 6.7 | | | 0.5 | | | 0.100 | | 21 | 93 | 0.080 | 223 | |
| SP1 | 30/04/2008 | 329 | 11.6 | 8 | 104.1 | 6.8 | | | 0.2 | | | 0.060 | | 9 | 143 | 0.030 | 227 | |
| SP3 | 17/04/2008 | 399 | 7.5 | 2 | 95.5 | 6.7 | | | 0.1 | | | <LOD | | <LOD | | | 0.090 | 270 |
| SP3 | 18/04/2008 | 396 | 8.2 | 7 | 106.3 | 7.0 | | | 0.2 | | | 0.020 | | 5 | | | 0.040 | 269 |
| SP3 | 21/04/2008 | 373 | 10.4 | 3 | 107.6 | 7.4 | | | 2.2 | | | <LOD | | <LOD | | | 0.040 | 250 |
| SP3 | 22/04/2008 | 386 | 10.7 | 2 | 102.2 | 7.1 | | | 0.2 | | | 0.130 | | <LOD | | | 0.020 | 252 |
| SP3 | 23/04/2008 | 393 | 11.2 | 2 | 109.5 | 7.1 | | | 0.6 | | | 0.290 | | 15 | | | <LOD | 260 |
| SP3 | 24/04/2008 | 397 | 11.4 | 2 | 105.5 | 7.5 | | | 0.1 | | | 0.110 | | 17 | | | 0.040 | 262 |
| SP3 | 25/04/2008 | 397 | 12.2 | 2 | 106.2 | 6.8 | | | 0.4 | | | 0.050 | | <LOD | | | 0.060 | 278 |
| SP3 | 28/04/2008 | 395 | 11.4 | 15 | 107.4 | 6.8 | | | 0.3 | | | 0.270 | | 30 | | | 0.080 | 241 |
| SP3 | 29/04/2008 | 361 | 9.6 | 5 | 105.0 | 7.2 | | | 0.3 | | | 0.090 | | 14 | | | 0.030 | 252 |
| SP3 | 30/04/2008 | 407 | 6.8 | 4 | 106.8 | 6.9 | | | 0.1 | | | 0.210 | | | | | 0.010 | 283 |
| SP1 | 21/04/2008 | 234 | | 10 | | 7.6 | 9 | <10 | | 0.877 | 0.052 | 0.037 | 0.025 | <20 | 97 | | <0.03 | 190 |
| SP3 | 21/04/2008 | 232 | | 2 | | 7.1 | <2 | <10 | | 1.603 | 0.018 | 0.053 | 0.022 | <20 | 27 | | <0.03 | 177 |
| Additional Monitoring | | | | | | | | | | | | | | | | | | |
| D22 | 17/04/2008 | 286 | 5.9 | 5 | 95.0 | 6.6 | | | <LOD | | | 0.770 | | 32 | | | 0.050 | 196 |
| D22 | 22/04/2008 | 370 | 8.4 | 4 | 90.7 | 7.1 | | | <LOD | | | 2.240 | | 9 | | | 0.040 | 242 |
| D62 | 17/04/2008 | 246 | 5.8 | 3 | 64.7 | 5.7 | | | <LOD | | | 0.400 | | 30 | | | 0.040 | 168 |
| D62 | 22/04/2008 | 233 | 8.9 | 4 | 93.3 | 4.7 | | | 0.2 | | | >LOD | | 14 | | | 0.050 | 155 |
| Axonics Monitoring | | | | | | | | | | | | | | | | | | |
| Pre | 17/04/2008 | 383 | | 360 | | 6.7 | | | <LOD | | | 0.480 | | 504 | | | 0.070 | 257 |
| Post | 17/04/2008 | 414 | | 3 | | 6.6 | | | 0.5 | | | 0.160 | | 5 | 267 | | 0.030 | 281 |
| Pre | 18/04/2008 | 386 | | 21 | | 6.9 | | | <LOD | | | 0.130 | | 534 | | | 0.010 | 261 |
| Post | 18/04/2008 | 395 | | 2 | | 6.7 | | | 0.7 | | | 0.140 | | 7 | 187 | | 0.010 | 268 |
| Pre | 21/04/2008 | 364 | | 42 | | 7.4 | | | <LOD | | | 0.410 | | 1470 | | | 0.060 | 244 |
| Post | 21/04/2008 | 374 | | 4 | | 7.2 | | | 1.1 | | | 0.150 | | 16 | 402 | | 0.030 | 250 |
| Pre | 22/04/2008 | 392 | | 98 | | 7.0 | | | <LOD | | | 0.800 | | 106 | | | <LOD | 259 |
| Post | 22/04/2008 | 416 | | 2 | | 7.1 | | | 0.6 | | | 1.970 | | 9 | 291 | | 0.030 | 275 |
| Pre | 23/04/2008 | 390 | | 64 | | 7.0 | | | <LOD | | | 0.350 | | 144 | | | 0.060 | 258 |
| Post | 23/04/2008 | 407 | | 1 | | 7.0 | | | 0.7 | | | 0.290 | | 10 | 68 | | 0.050 | 269 |
| Pre | 24/04/2008 | 391 | | 4 | | 7.4 | | | <LOD | | | 0.290 | | 91 | | | 0.050 | 258 |
| Post | 24/04/2008 | 408 | | 3 | | 7.3 | | | 0.7 | | | 0.190 | | 20 | 414 | | 0.050 | 274 |
| Pre | 25/04/2008 | 389 | | 41 | | 7.0 | | | <LOD | | | 0.210 | | 615 | | | 0.050 | 273 |
| Post | 25/04/2008 | 409 | | 8 | | 6.9 | | | 0.4 | | | 0.180 | | 37 | 84 | | 0.070 | 291 |
| Pre | 28/04/2008 | 391 | | 75 | | 7.0 | | | <LOD | | | 0.310 | | 236 | | | 0.060 | 266 |
| Post | 28/04/2008 | 408 | | 1 | | 6.7 | | | 0.3 | | | 0.310 | | 15 | 154 | | 0.050 | 285 |
| Pre | 29/04/2008 | 396 | | 53 | | 7.1 | | | <LOD | | | 0.960 | | 93 | | | 0.100 | 281 |
| Post | 29/04/2008 | 413 | | 1 | | 6.3 | | | 1.2 | | | 0.240 | | <LOD | 128 | | 0.080 | 293 |
| Pre | 30/04/2008 | 381 | | 56 | | 7.2 | | | <LOD | | | 0.290 | | 143 | | | 0.040 | 266 |
| Post | 30/04/2008 | 405 | | 2 | | 7.0 | | | 0.4 | | | 0.410 | | 8 | 315 | | 0.080 | 281 |
| Pre Axonics | 21/04/2008 | 230 | | 29 | | 7.1 | 25 | <10 | | 1.717 | 0.095 | 0.158 | 0.054 | 54 | 1239 | <0.03 | 174 | |
| Post Axonics | 21/04/2008 | 231 | | 1 | | 6.4 | <2 | <10 | | 1.529 | 0.014 | 0.141 | 0.043 | <20 | 348 | <0.03 | 178 | |
| I.P. = In Progress | | | | | | | | | | | | | | | | | | |
| Italics = Indicative Only | | | | | | | | | | | | | | | | | | |
| < LOD = Below Limit of Detection | | | | | | | | | | | | | | | | | | |
| > LOD = Above Limit of Detection | | | | | | | | | | | | | | | | | | |
| Grey shaded areas denote parameters that cannot or were not analysed on-site or the lab. | | | | | | | | | | | | | | | | | | |
| On-Site Analysis | | | | | | | | | | | | | | | | | | |

Groundwater Monitoring Record Sheet

Conducted by
Name:

Signed

Approved by
Name

| Location | Date | DO | Temp | Cond. | pH | TDS | Nitrate as NO ₃ | Ammonia | Aluminium | BOD | TSS | Total Hardness | Nitrite as NO ₂ | Arsenic | Mercury | Lead | Zinc | Chromium | Copper | Cadmium | Iron | Tin |
|----------|------|-------|------|-------|----|--------------------|-------------------------------|--------------------|--------------------|--------------------|--------------------|---------------------------|-------------------------------|--------------------|--------------------|--------------------|--------------------|--------------------|--------------------|--------------------|--------------------|--------------------|
| | | % Sat | oC | uS/cm | | mg l ⁻¹ | mg l ⁻¹ | mg l ⁻¹ | ug l ⁻¹ | mg l ⁻¹ | mg l ⁻¹ | mg/l CaCO ₃ | mg l ⁻¹ | ug l ⁻¹ | ug l ⁻¹ | ug l ⁻¹ | ug l ⁻¹ | ug l ⁻¹ | ug l ⁻¹ | ug l ⁻¹ | ug l ⁻¹ | ug l ⁻¹ |
| MP 1 | | | | | | | | | | | | | | | | | | | | | | |
| MP 2 | | | | | | | | | | | | | | | | | | | | | | |
| MP 3 | | | | | | | | | | | | | | | | | | | | | | |
| MP 4 | | | | | | | | | | | | | | | | | | | | | | |
| MP 5 | | | | | | | | | | | | | | | | | | | | | | |
| MP 6 | | | | | | | | | | | | | | | | | | | | | | |
| MP 7 | | | | | | | | | | | | | | | | | | | | | | |
| MP 8 | | | | | | | | | | | | | | | | | | | | | | |
| MP 9 | | | | | | | | | | | | | | | | | | | | | | |
| MP 10a | | | | | | | | | | | | | | | | | | | | | | |
| MP 11 | | | | | | | | | | | | | | | | | | | | | | |

Graphs provided for MP1, MP2,MP4, MP6 and MP7 for: Temperature, Conductivity, and pH.

NO GROUNDWATER MONITORING UNDERTAKEN DURING THE REPORTING PERIOD

| Dust Monitoring Record Sheet | | | | | no... 1 of 1 | | |
|---|-----------------|--------------|-------------|-----------------|---------------|-------------------------|-------------------------------------|
| Conducted by | | | Approved by | | | | |
| Name: | | Signed | | Name: | | Signed | |
| Determinant Results | | | | | | | |
| | Date Positioned | Date Removed | Ref. Number | Date Dispatched | Date Returned | Weight (mg/sq.m/day) | Comments |
| Target (Consent) Limit: 350 mg m² d⁻¹ on as a 30 day average | | | | | | | |
| D1 | 23/11/2007 | 23/12/2007 | 157412 | 04/01/2008 | 22/01/2008 | 68 | |
| D2 | 23/11/2007 | 23/12/2007 | 157413 | 04/01/2008 | 22/01/2008 | 24 | |
| D3 | 23/11/2007 | 23/12/2007 | 157414 | 04/01/2008 | 22/01/2008 | 214 | |
| D4 | 23/11/2007 | 23/12/2007 | 157415 | 04/01/2008 | 22/01/2008 | 169 | |
| D1 | 23/12/2007 | 23/01/2008 | 158975 | 25/01/2008 | 18/02/2008 | 280 | |
| D2 | 23/12/2007 | 23/01/2008 | 158976 | 25/01/2008 | 18/02/2008 | 355 | |
| D3 | 23/12/2007 | 23/01/2008 | 158977 | 25/01/2008 | 18/02/2008 | 295 | |
| D4 | 23/12/2007 | 23/01/2008 | 158978 | 25/01/2008 | 18/02/2008 | 300 | |
| D1 | 23/01/2008 | 25/02/2008 | 163401 | 25/02/2008 | 20/03/2008 | 471 | |
| D2 | 23/01/2008 | 25/02/2008 | 163402 | 25/02/2008 | 20/03/2008 | 426 | |
| D3 | 23/01/2008 | 25/02/2008 | 163403 | 25/02/2008 | 20/03/2008 | 765 | |
| D4 | 23/01/2008 | 25/02/2008 | 163404 | 25/02/2008 | 20/03/2008 | 398 | |
| D1 | 25/02/2008 | 25/03/2008 | 165880 | 28/03/2008 | 14/04/2008 | 1191 | Unusual results under investigation |
| D2 | 25/02/2008 | 25/03/2008 | 165881 | 28/03/2008 | 14/04/2008 | 362 | Unusual results under investigation |
| D3 | 25/02/2008 | 25/03/2008 | 165882 | 28/03/2008 | 14/04/2008 | 2047 | Unusual results under investigation |
| D4 | 25/02/2008 | 25/03/2008 | 165883 | 28/03/2008 | 14/04/2008 | 938 | Unusual results under investigation |
| D1 | 25/03/2008 | 25/04/2008 | I.P. | 28/04/2008 | I.P. | I.P. | |
| D2 | 25/03/2008 | 25/04/2008 | I.P. | 28/04/2008 | I.P. | I.P. | |
| D3 | 25/03/2008 | 25/04/2008 | I.P. | 28/04/2008 | I.P. | I.P. | |
| D4 | 25/03/2008 | 25/04/2008 | I.P. | 28/04/2008 | I.P. | I.P. | |

NDP = No Determination Possible

Monitoring Points are numbered clockwise through the Cardinal Marks (N, E, S, W)

Monitoring Results will be presented monthly

| Noise Monitoring Record Sheet | | | | | | | | | | no... 1 of 1 | | | | | |
|-------------------------------|--------------------|--------------------|------------|----------|----------|------------|-----------------|------------------------|------------------|-------------------|-------------------|-----------|--------|--|--|
| Conducted by | | | | | | | Approved by | | | | | | | | |
| Name: Siobhan Quinn | | | | | | | Signed | | | Name: | | | Signed | | |
| Determinant Results | | | | | | | | | | | | | | | |
| Location | Air Temp. (Max) | Air Temp. (Min) | Start Date | Time | Duration | Serial No. | Wind | | Results dB | | | *Comments | | | |
| | | | | | | | Speed (m/s)* | Direction (Degrees) | L _{Aeq} | L _{Amin} | L _{Amax} | | | | |
| Action Limit | | | | | | | | | 60 | | | | | | |
| Target Limit | | | | | | | | | 65 | | | | | | |
| N1 | 10.7 | 68.5 | 17/04/2008 | 07:00:00 | 11:00:00 | 2343753 | 3.1 | 279.5 | 56.9 | 38.4 | 89.7 | | | | |
| N1 | 12.7 | 70.8 | 18/04/2008 | 07:00:00 | 11:00:00 | 2343753 | 2.9 | 254.8 | 52.1 | 38.5 | 80.4 | | | | |
| N1 | 13.7 | 77.8 | 21/04/2008 | 08:00:00 | 10:00:00 | 2343753 | 0.9 | 228.2 | 50.5 | 30.0 | 86.3 | | | | |
| N1 | 13.1 | 81.8 | 22/04/2008 | 07:00:00 | 11:00:00 | 2343753 | 3.5 | 262.2 | 51.6 | 30.0 | 77.7 | | | | |
| N1 | 15.3 | 77.9 | 23/04/2008 | 07:00:00 | 11:00:00 | 2343753 | 4.3 | 134.2 | 49.5 | 31.7 | 66.3 | | | | |
| N1 | 13.5 | 80.4 | 24/04/2008 | 07:00:00 | 11:00:00 | 2343753 | 4.0 | 43.1 | 46.6 | 34.2 | 63.5 | | | | |
| N1 | 13.5 | 93.1 | 25/04/2008 | 07:00:00 | 11:00:00 | 2343753 | 6.3 | 76.1 | 55.7 | 32.5 | 81.0 | | | | |
| N1 | 11.6 | 87.8 | 28/04/2008 | 08:00:00 | 11:00:00 | 2343753 | 3.1 | 125.9 | 46.1 | 34.5 | 82.7 | | | | |
| N1 | 6.2 | 98.3 | 29/04/2008 | 07:00:00 | 11:00:00 | 2343753 | 0.7 | 183.9 | 50.1 | 32.1 | 72.4 | | | | |
| N1 | 11.8 | 91.9 | 30/04/2008 | 07:00:00 | 11:00:00 | 2343753 | 2.8 | 58.1 | 47.2 | 39.2 | 59.0 | | | | |

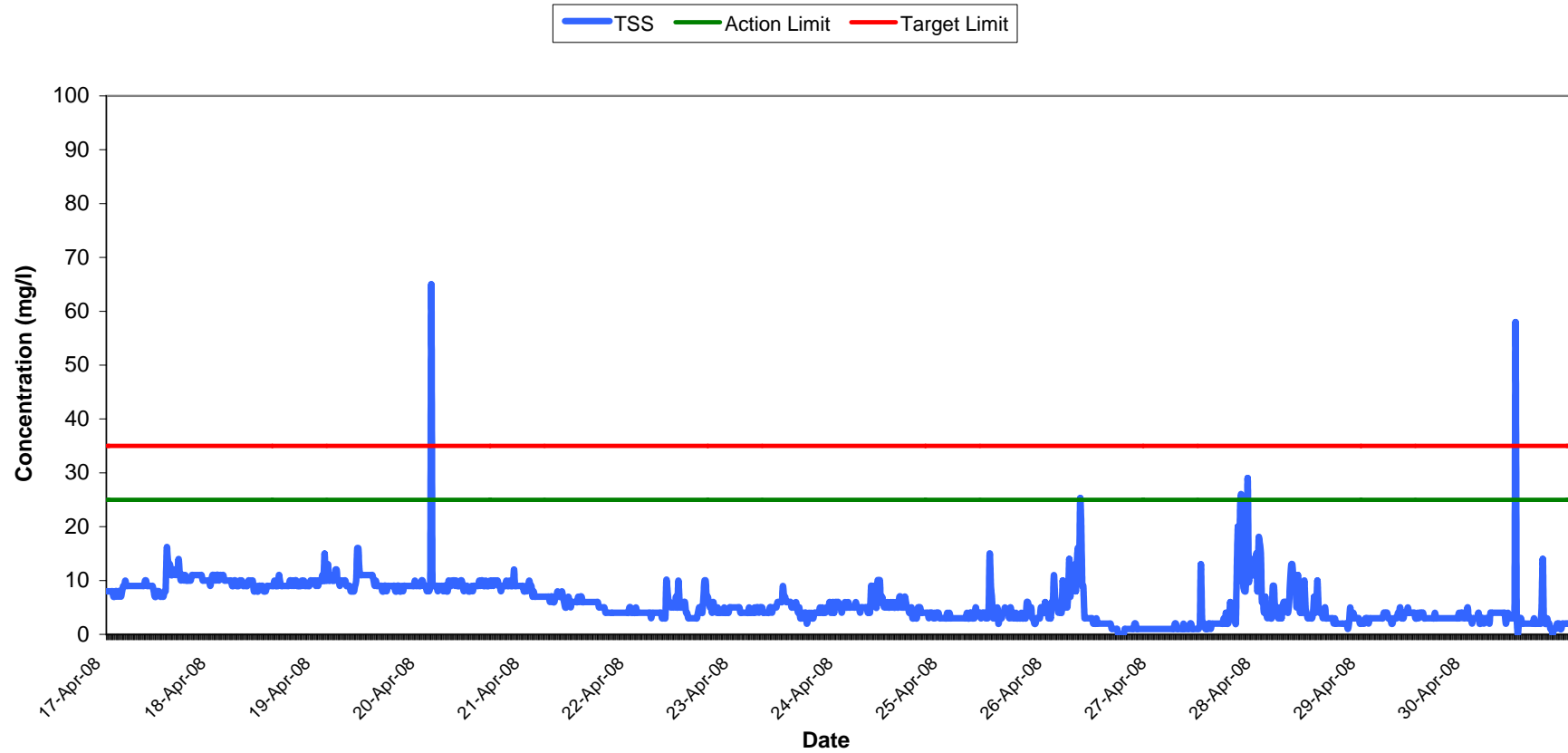
* Wind speeds in excess of 5 m/s negatively impact noise readings (as per EPA Guidance Note on Noise Measurement).

| Flow Weir Record Sheet | | | | | | | |
|-------------------------------|-----------|-----------|-------------|-----------|-----------|-----------|---------|
| Conducted by | | | Approved by | | | | |
| Name: | | Signed | Name: | | | | |
| Determinant Results | | | | | | | |
| Date | SP1 | | | SP3 | | | Comment |
| | Max (l/s) | Min (l/s) | Avg (l/s) | Max (l/s) | Min (l/s) | Avg (l/s) | |
| 17/04/2008 | 12.5 | 6.0 | 9.1 | 3.1 | 1.2 | 2.1 | |
| 18/04/2008 | 9.1 | 6.3 | 7.3 | 1.7 | 0.8 | 1.1 | |
| 19/04/2008 | 9.5 | 6.8 | 8.1 | 2.6 | 1.2 | 1.7 | |
| 20/04/2008 | 9.8 | 8.0 | 9.2 | 2.7 | 1.7 | 2.3 | |
| 21/04/2008 | 10.0 | 4.1 | 7.8 | 2.6 | 0.7 | 1.7 | |
| 22/04/2008 | 6.3 | 3.0 | 5.2 | 1.4 | 0.7 | 1.2 | |
| 23/04/2008 | 6.7 | 4.3 | 5.6 | 2.1 | 1.0 | 1.5 | |
| 24/04/2008 | 6.7 | 3.9 | 5.8 | 2.1 | 0.8 | 1.7 | |
| 25/04/2008 | 9.0 | 3.6 | 6.2 | 2.4 | 0.6 | 1.8 | |
| 26/04/2008 | 20.1 | 6.7 | 11.9 | 5.6 | 1.4 | 3.0 | |
| 27/04/2008 | 86.0 | 5.1 | 20.0 | 16.4 | 0.8 | 4.3 | |
| 28/04/2008 | 38.9 | 10.7 | 19.5 | 9.6 | 2.4 | 4.1 | |
| 29/04/2008 | 14.6 | 9.3 | 11.6 | 3.9 | 1.0 | 2.0 | |
| 30/04/2008 | 13.5 | 3.4 | 8.3 | 3.3 | 0.1 | 1.5 | |

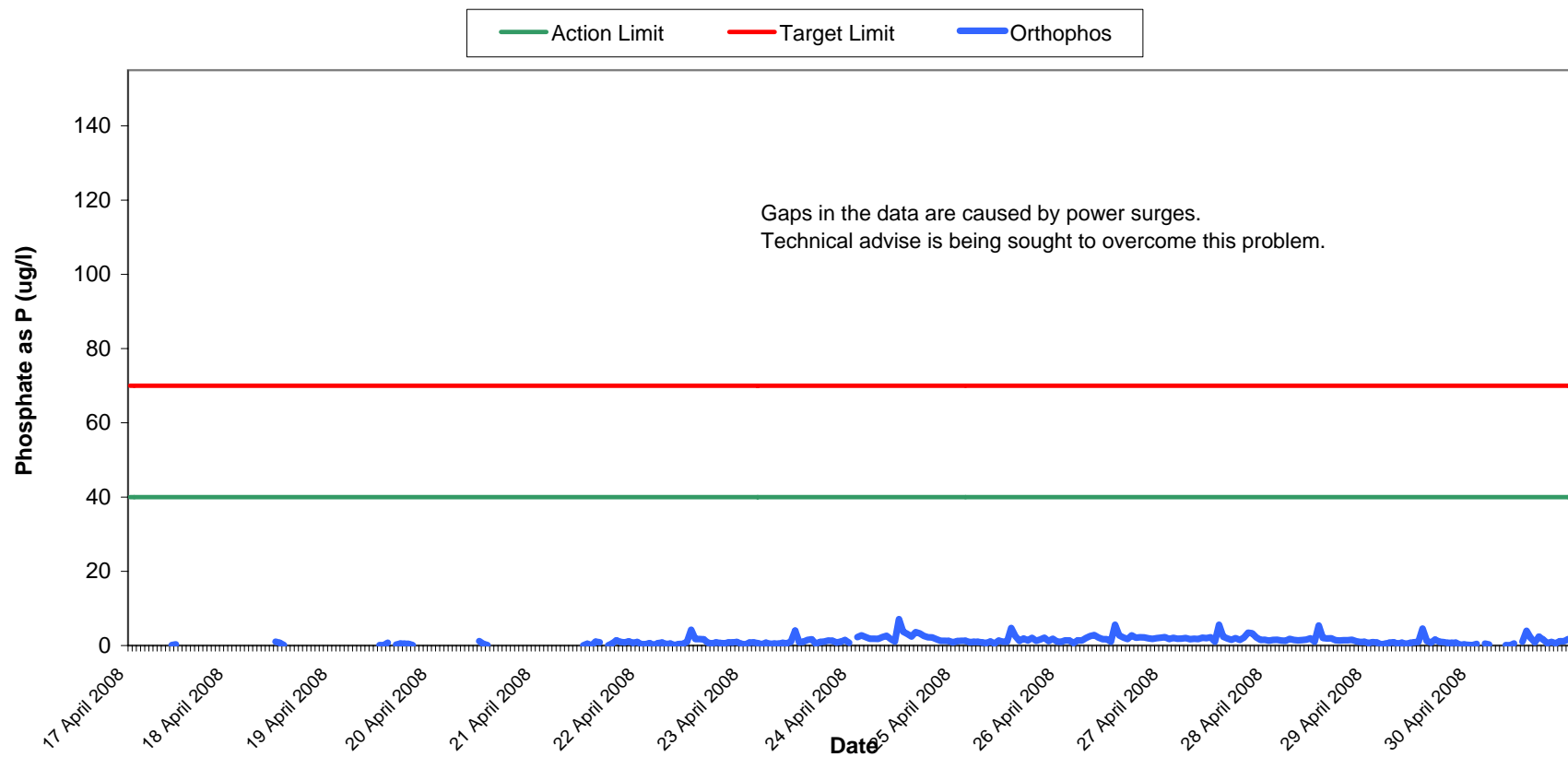
Negative Values indicate low flow

| | | | | | | | | | |
|---|-----------------|--------------|------------|------------|-----------------|----------|----------|----------|-----------------|
| Vibration Monitoring Record Sheet | | | | | no... 1 of 1 | | | | |
| Conducted by | | | | | Approved by | | | | |
| Name: Signed | | | | | Name: Signed | | | | |
| | | | | | | | | | |
| Determinant Results | | | | | | | | | |
| Location | Date Positioned | Date Removed | Event Date | Event Time | Peak Vector Sum | Tran PPV | Vert PPV | Long PPV | Comments |
| V1 | 17-Apr-08 | | | 16:06 | | | | | Monitor Started |
| | | | 22-Apr-08 | 6:36 | 8.81 | 4.70 | 8.00 | 4.38 | Sensor check |
| | 01-May-08 | | | 8:34 | | | | | Monitor Stopped |
| | | | | | | | | | |
| | | | | | | | | | |
| | | | | | | | | | |
| Vibration meter was located at V1 only. | | | | | | | | | |

Total Suspended Solids Results at SP1
Week 17-18, 2008

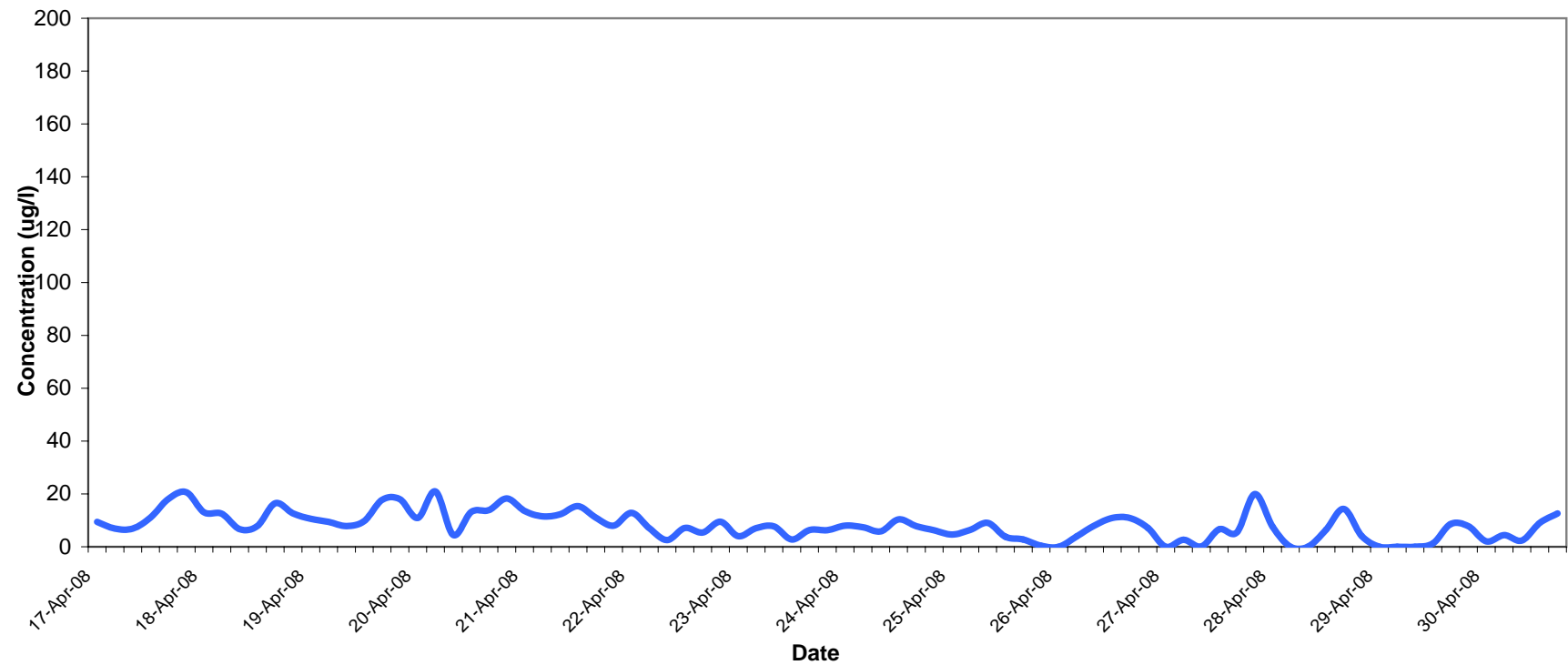


Orthophosphate Results at SP1 Week 17-18, 2008

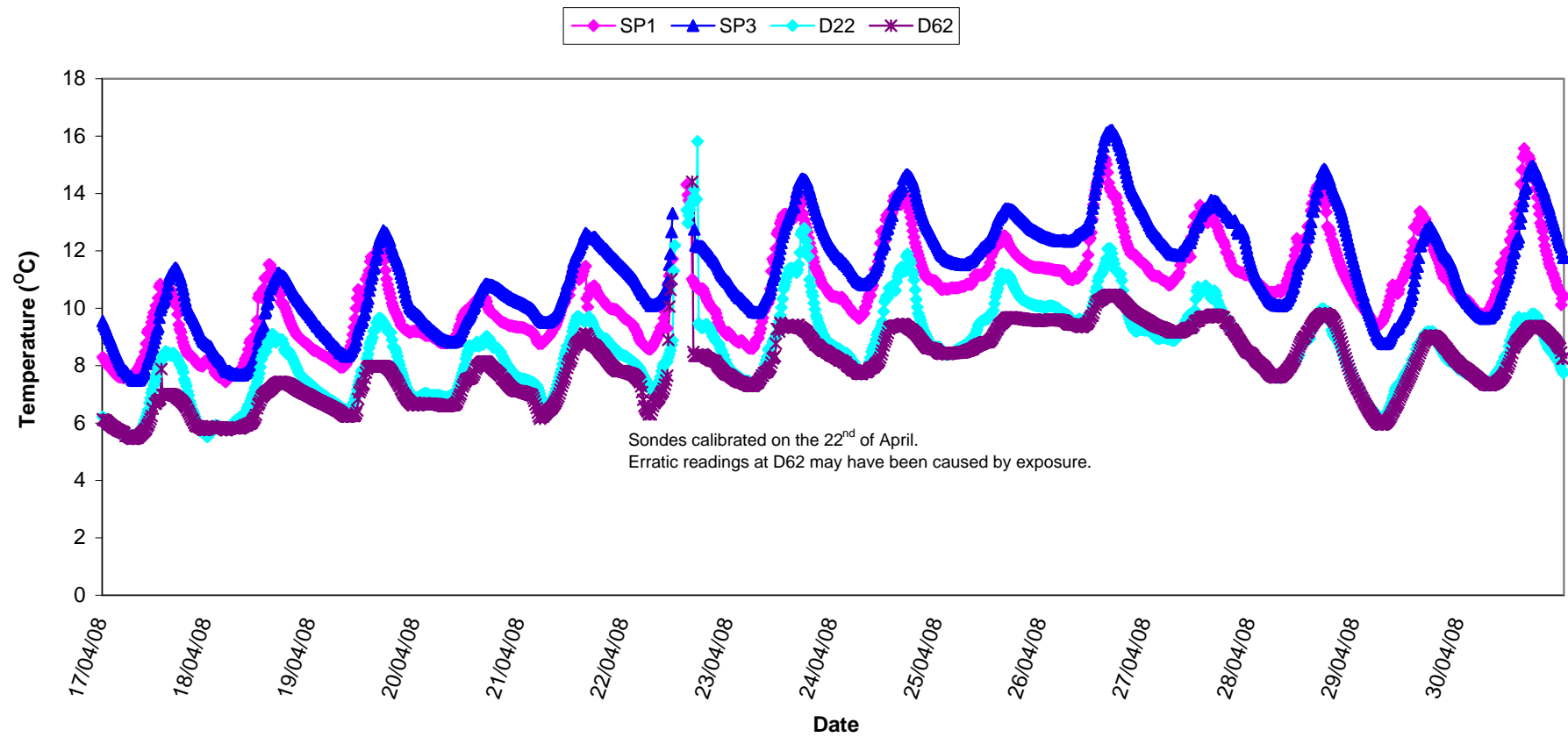


Aluminium Concentration at SP1
Week 17-18, 2008

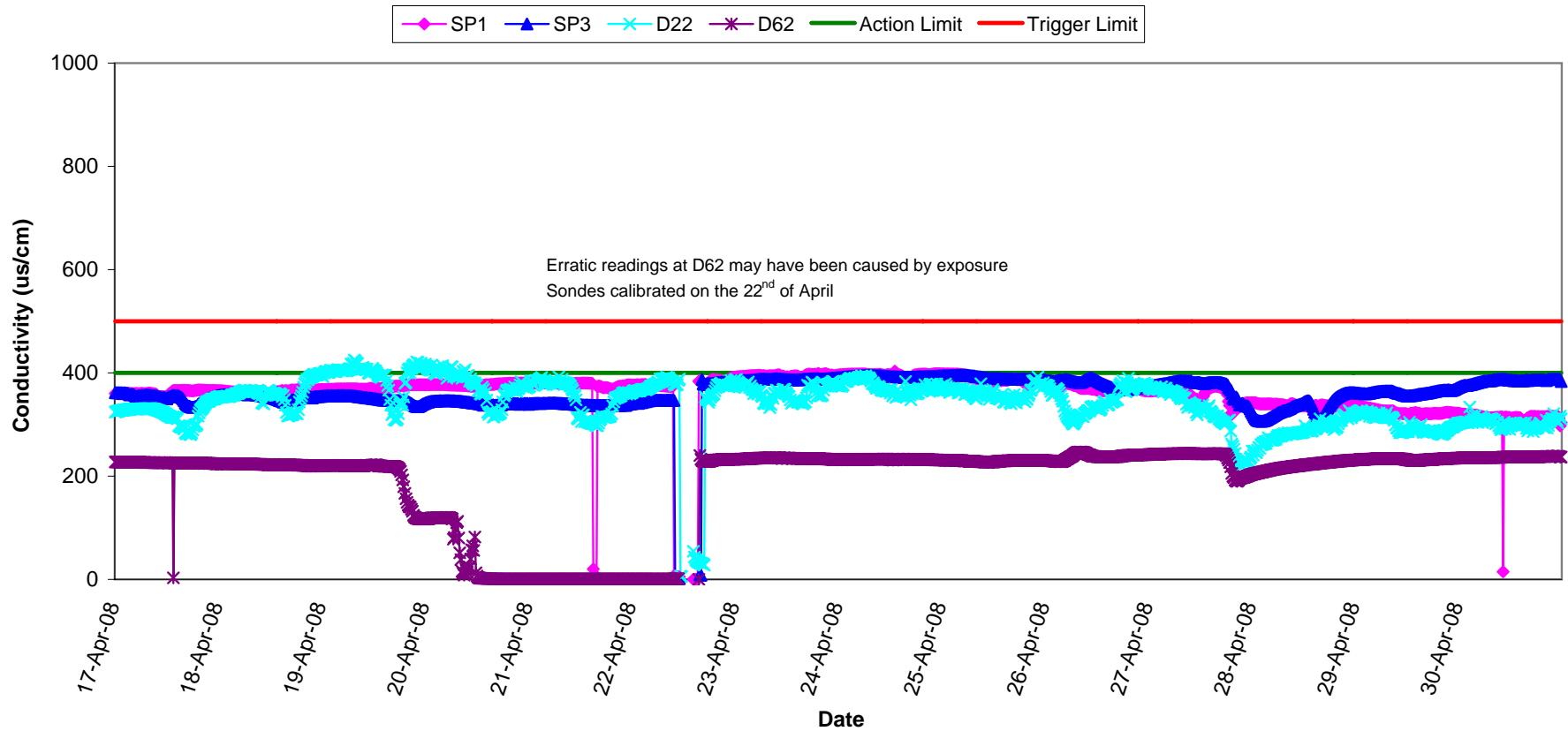
Aluminium



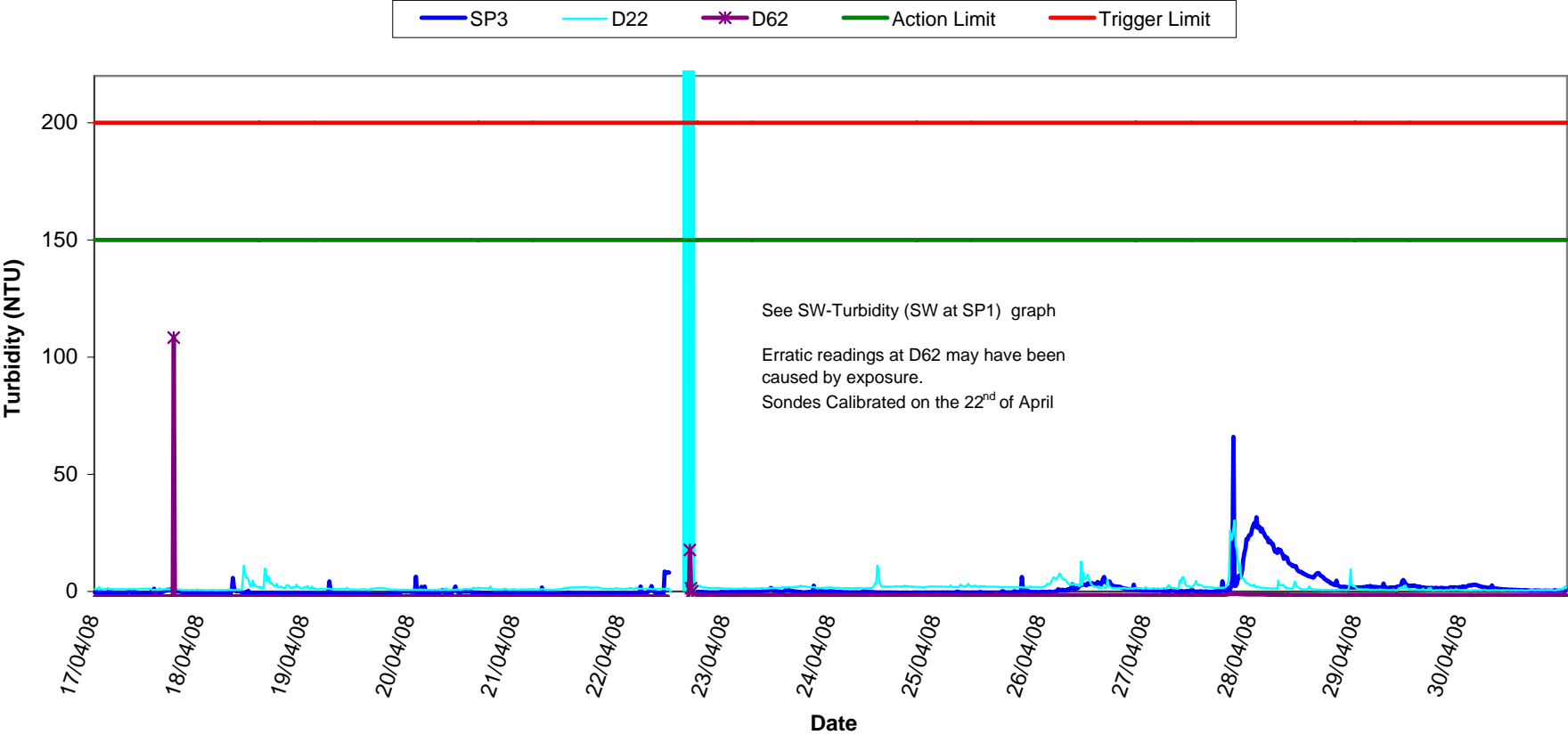
Temperature - Surface Waters,
Week 17-18, 2008



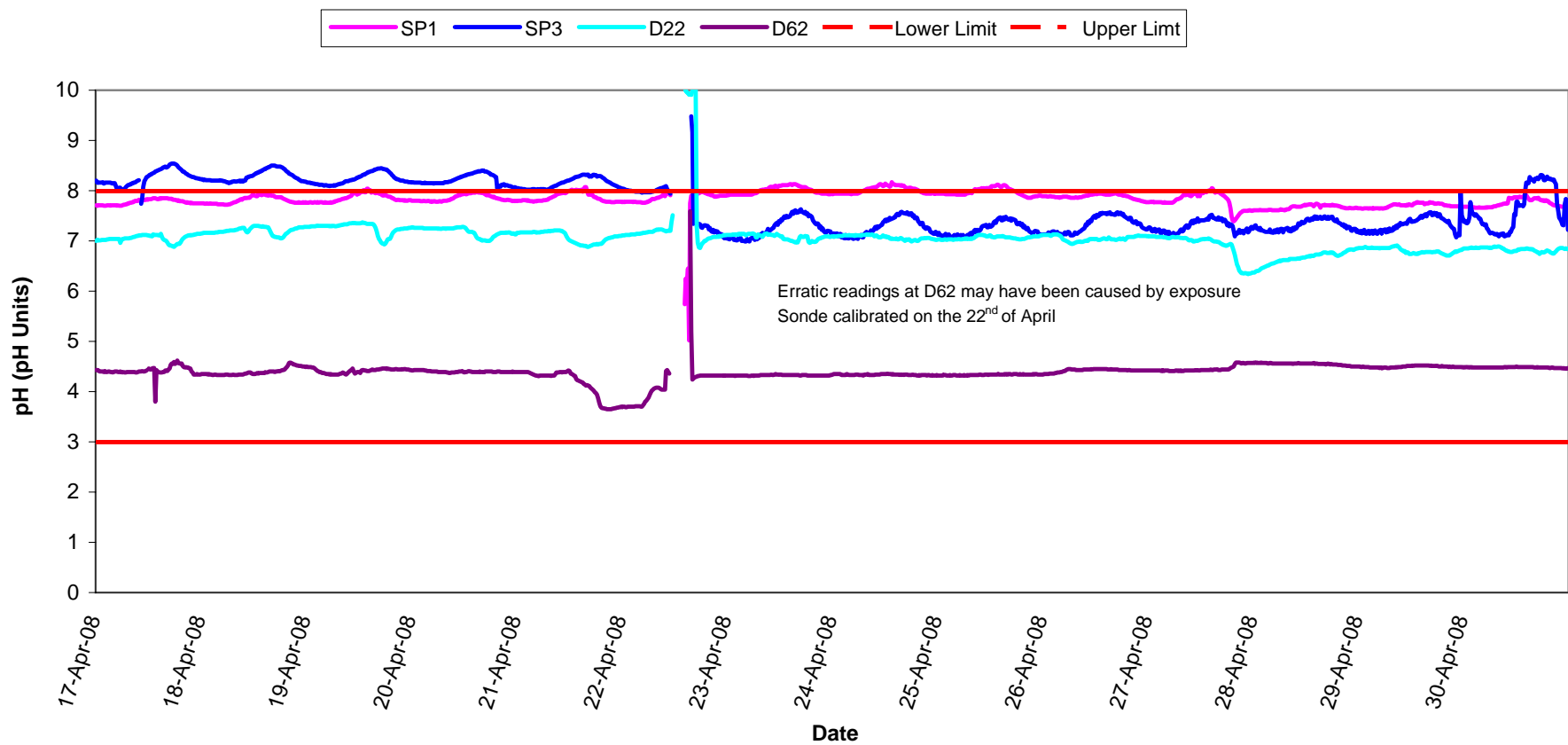
Conductivity - Surface Waters, Week 17-18, 2008



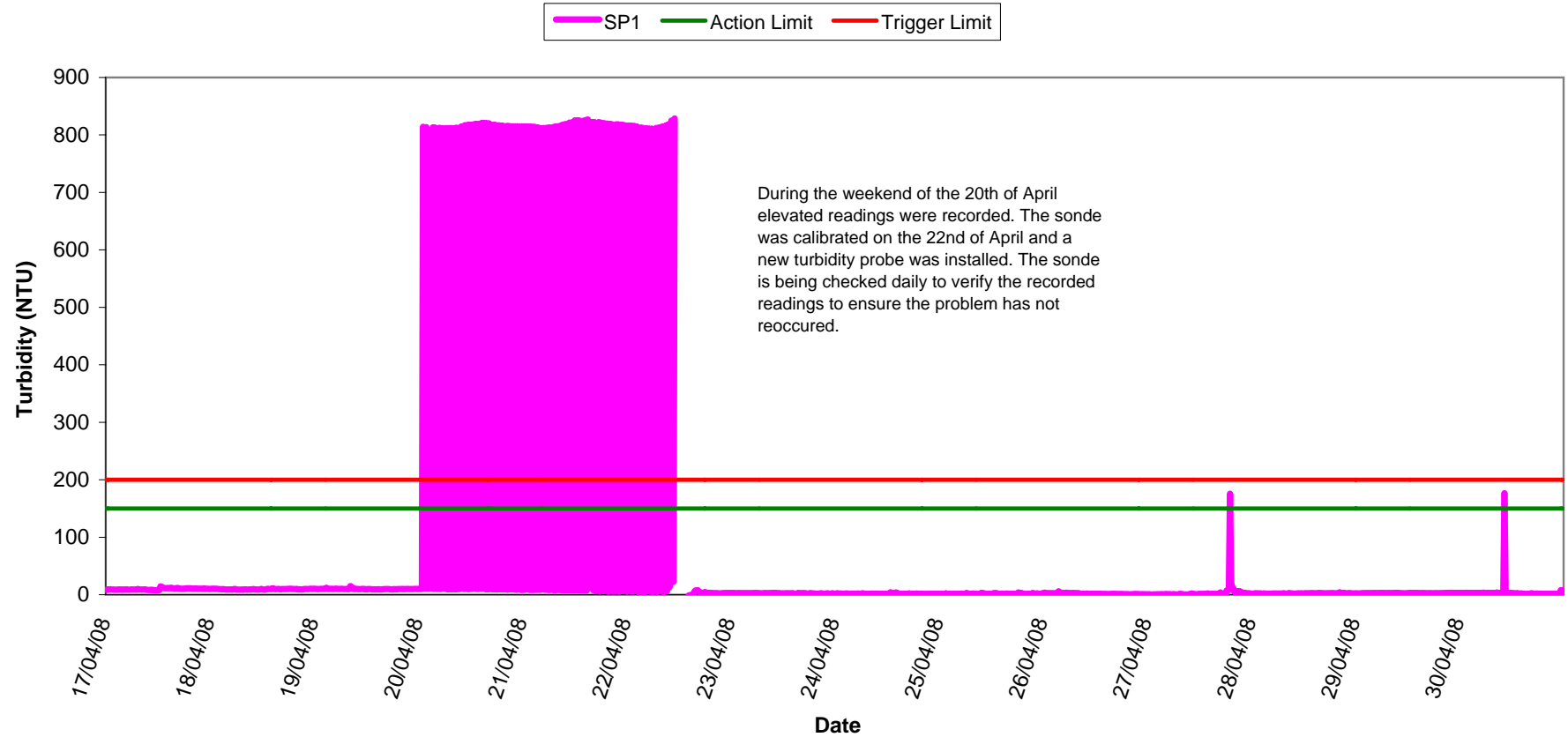
**Turbidity - Surface Waters,
Week 17-18, 2008**



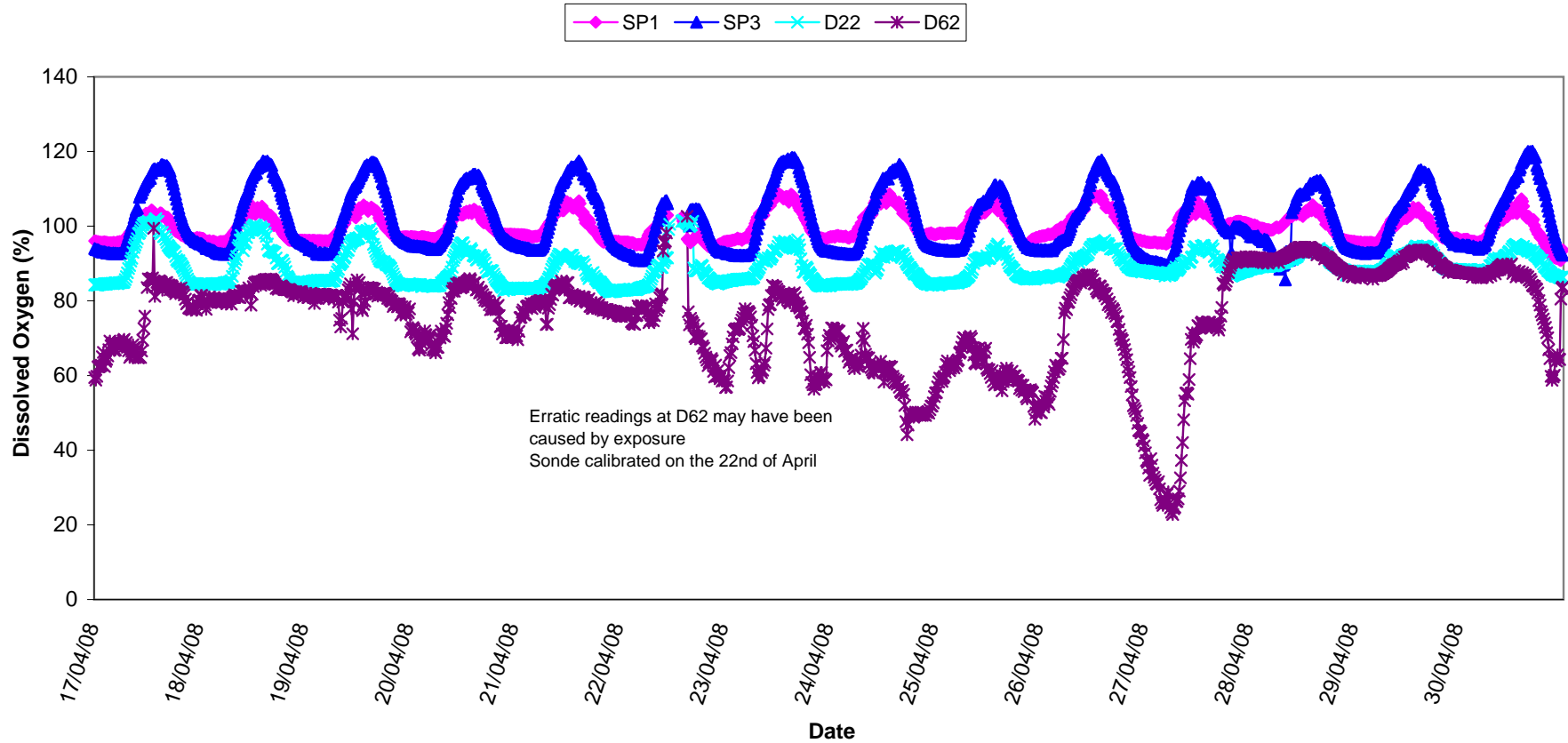
pH - Surface Waters, Week 17-18, 2008



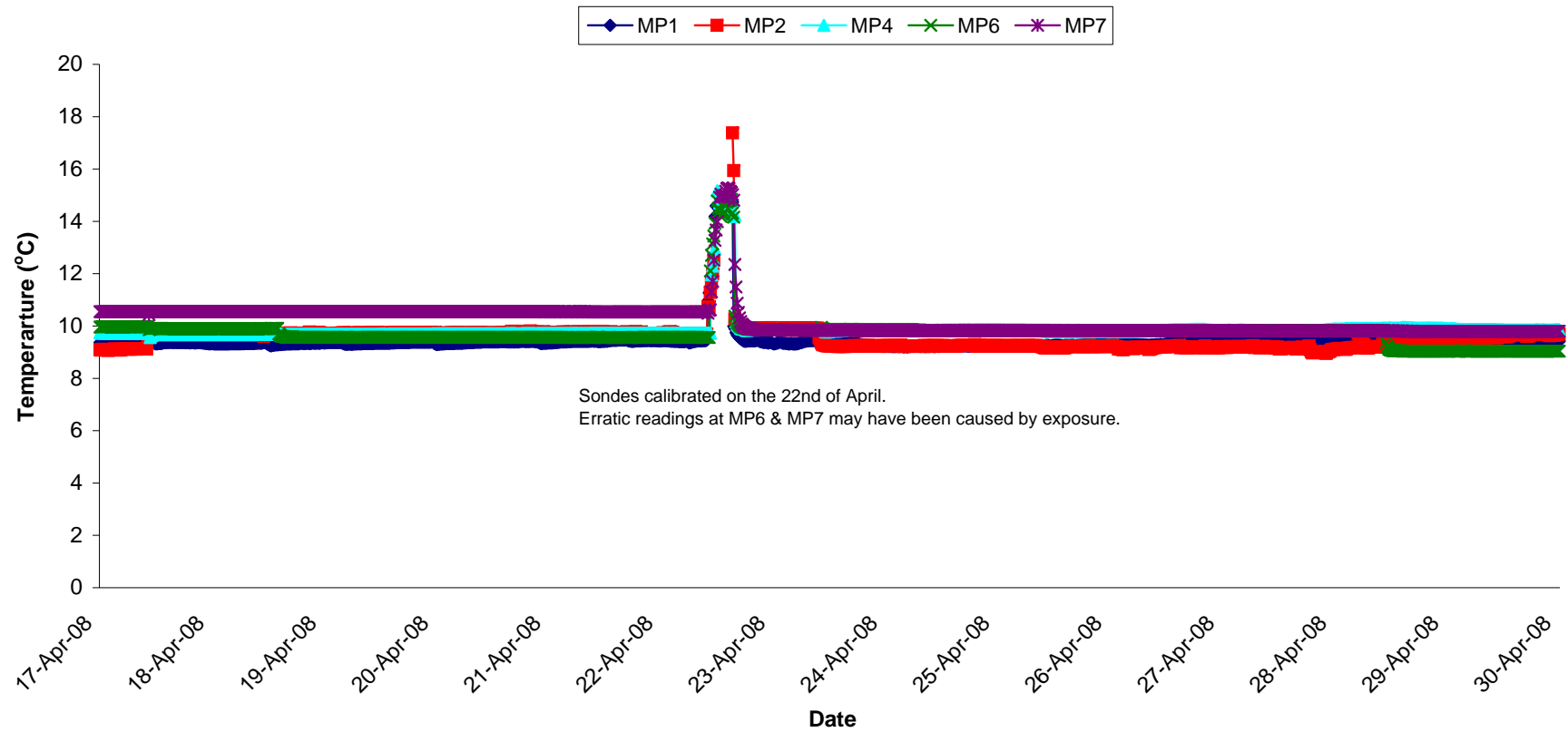
**Turbidity - Surface Waters @ SP1,
Week 17-18, 2008**



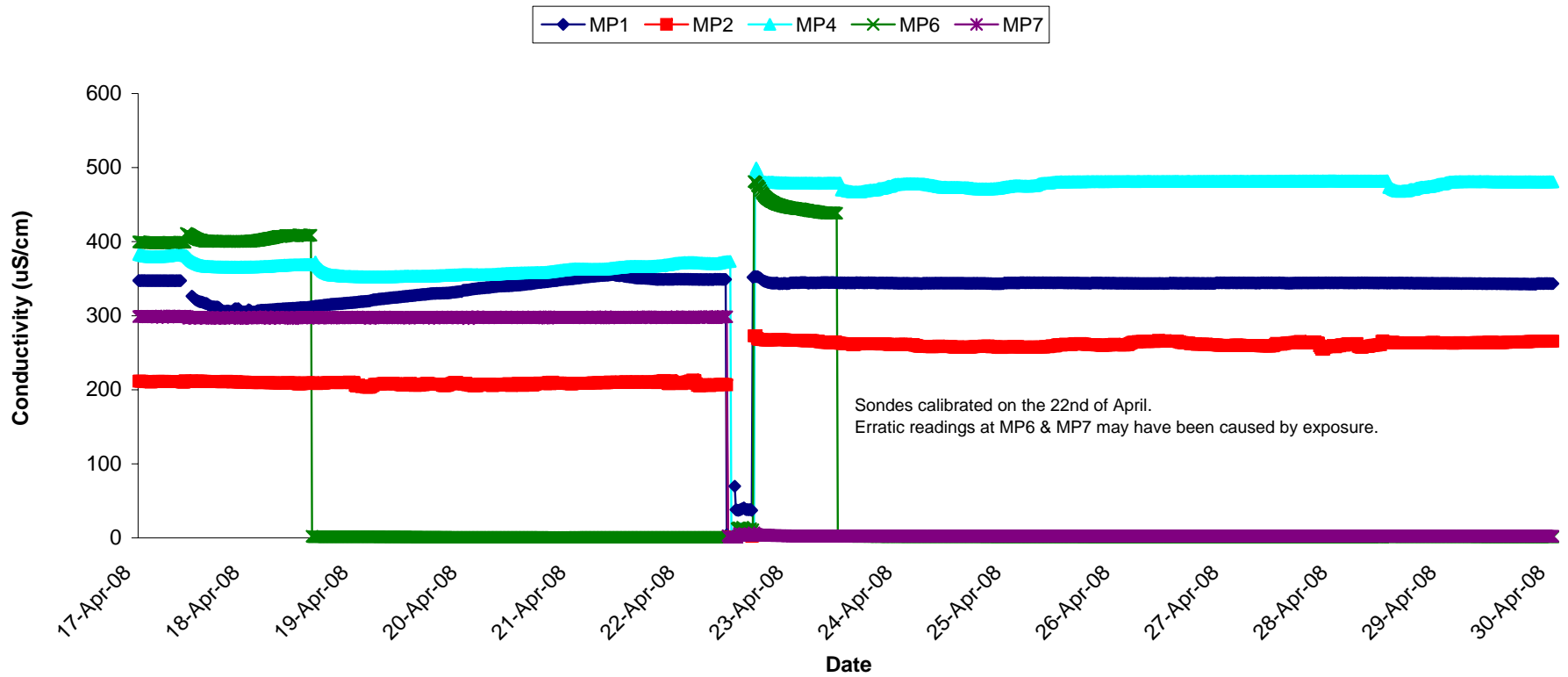
**Dissolved Oxygen - Surface Waters,
Week 17-18, 2008**



Temperature - Groundwaters Week 17-18, 2008



Conductivity - Groundwaters Week 17-18, 2008



pH - Groundwaters Week 17-18, 2008

