

Zoning*

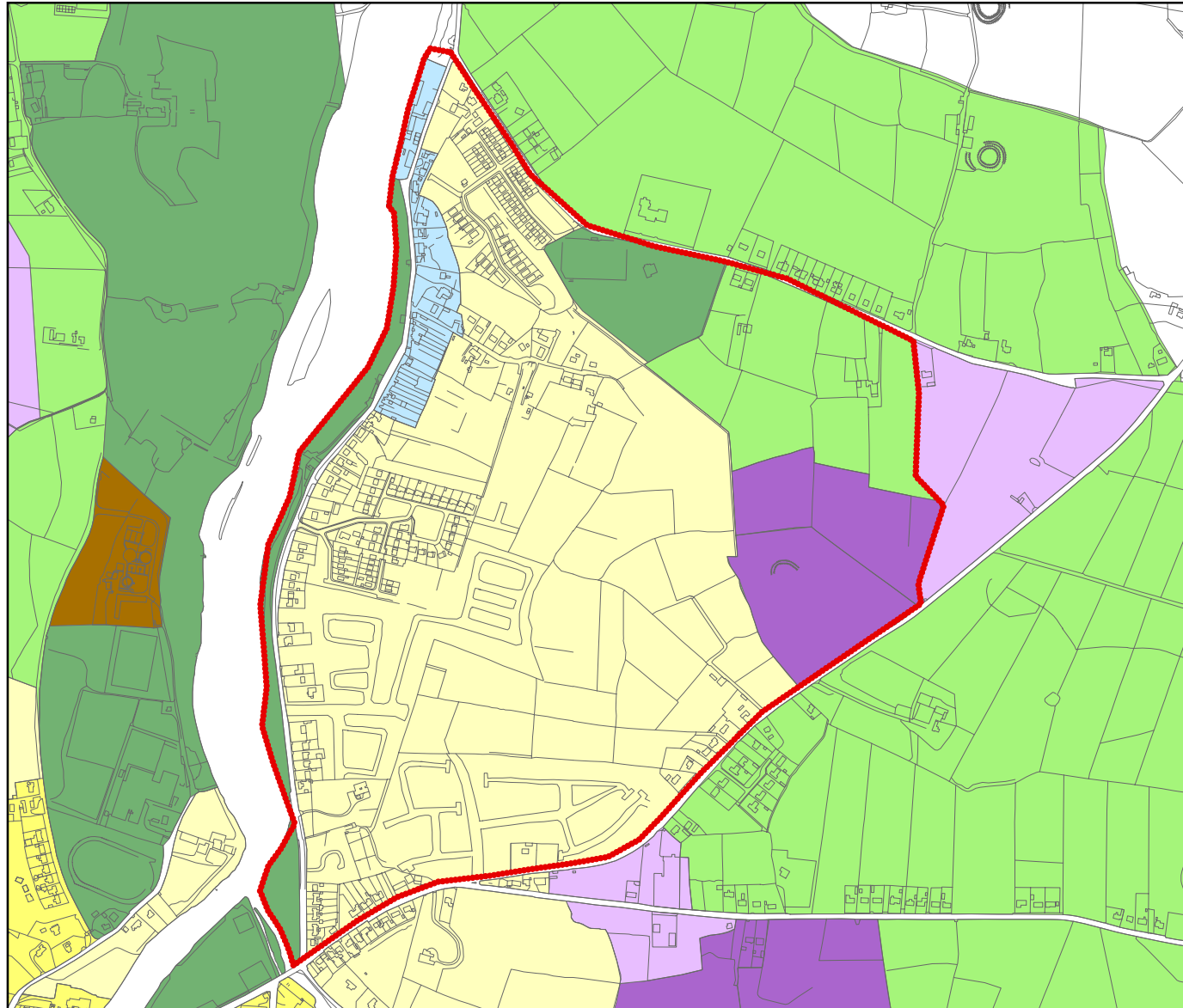
Ballina Action Area Plans 2004 - Quay Area




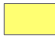
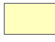





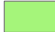
Ballina Town Council



MAP NO. 2.2



LEGEND

-  Quay Area
-  R1- Residential (Medium Density)
-  R2 - Residential (Low Density)
-  C2 - Commercial (Edge of Centre)
-  I - Industrial
-  IC - Industrial/Commercial
-  U - Utility
-  RL - Recreation/Leisure
-  A - Agricultural

* Source: Ballina & Environs Development Plan 2003 - 2009

OSI-License: AR 0021804; Scale: NTS; Ref-No: B-7001-02