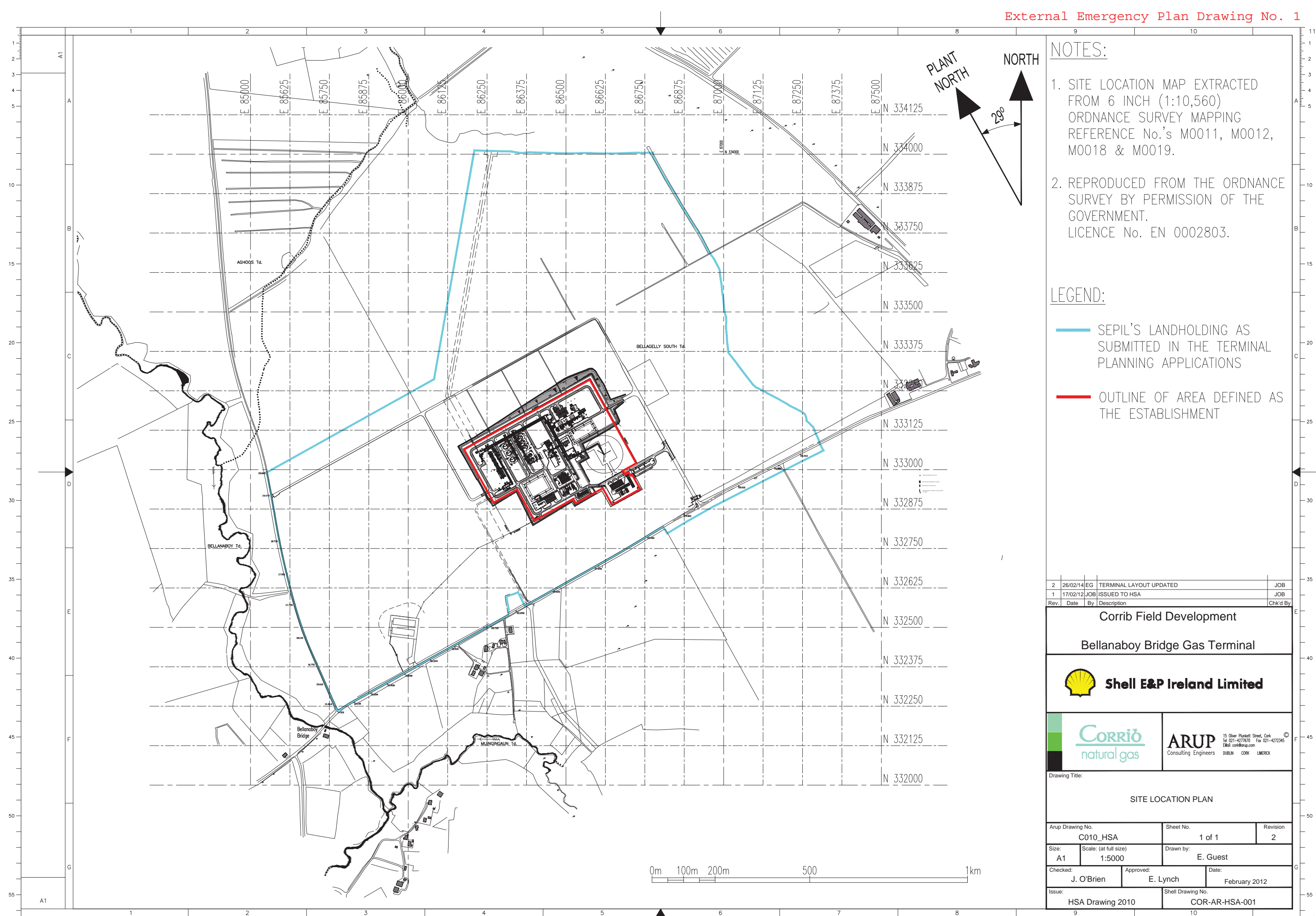
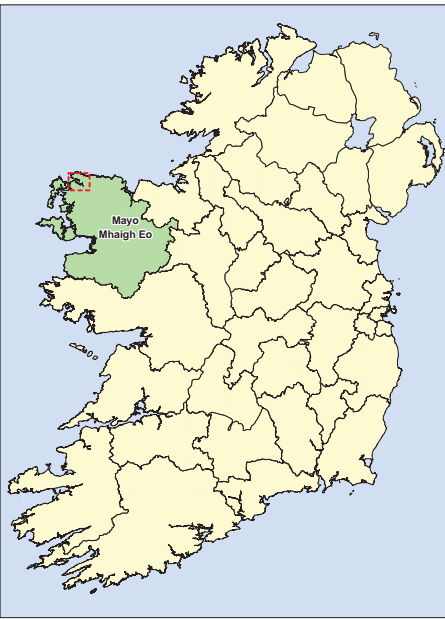


Appendix 1 DRAWINGS

Drawing 01:	Site Location Plan
Drawing 02:	Key Locations
Drawing 03:	Specified Area based on HSA's 2010 LUP Policy
Drawing 04:	Muster Assembly Route Points - Evacuation Route to Muster Locations
Drawing 05:	Muster Assembly Route Points - Assembly to Site Boundary
Drawing 06:	Emergency Response Equipment Locations
Drawing 07:	Firewater Ring Main Layout
Drawing 08:	Fire Hydrant Cabinets Locations
Drawing 09:	Foam Water Monitor Equipment Locations
Drawing 10:	EM Showers and Eye Wash Locations
Drawing 11:	Portable Stationary Spill Kit Locations
Drawing 12:	Emergency Telephone Locations
Drawing 13:	Establishment Planned Catchments
Drawing 14:	Location of Rendezvous Points
Drawing 15:	Inner Cordon
Drawing 16:	RVP 1 Outer Cordon
Drawing 17:	RVP 2 Outer Cordon
Drawing 18:	RVP 1 & RVP 2 Traffic Cordons
Drawing 19:	RVP 1 Alternative Traffic Cordon
Drawing 20:	An Garda Síochána Access Control Points





Shell E&P Ireland Limited
Corrib House,
52 Leeson Street Lower,
Dublin 2,
Republic of Ireland.

Project
Corrib

Title
Key Locations



RPS
West Pier Business Campus,
Dun Laoghaire
Co Dublin
T +353 (0) 1 4882900
F +353 (0) 1 2835676
E ireland@rpsgroup.com
W www.rpsgroup.com/ireland

Issue Details

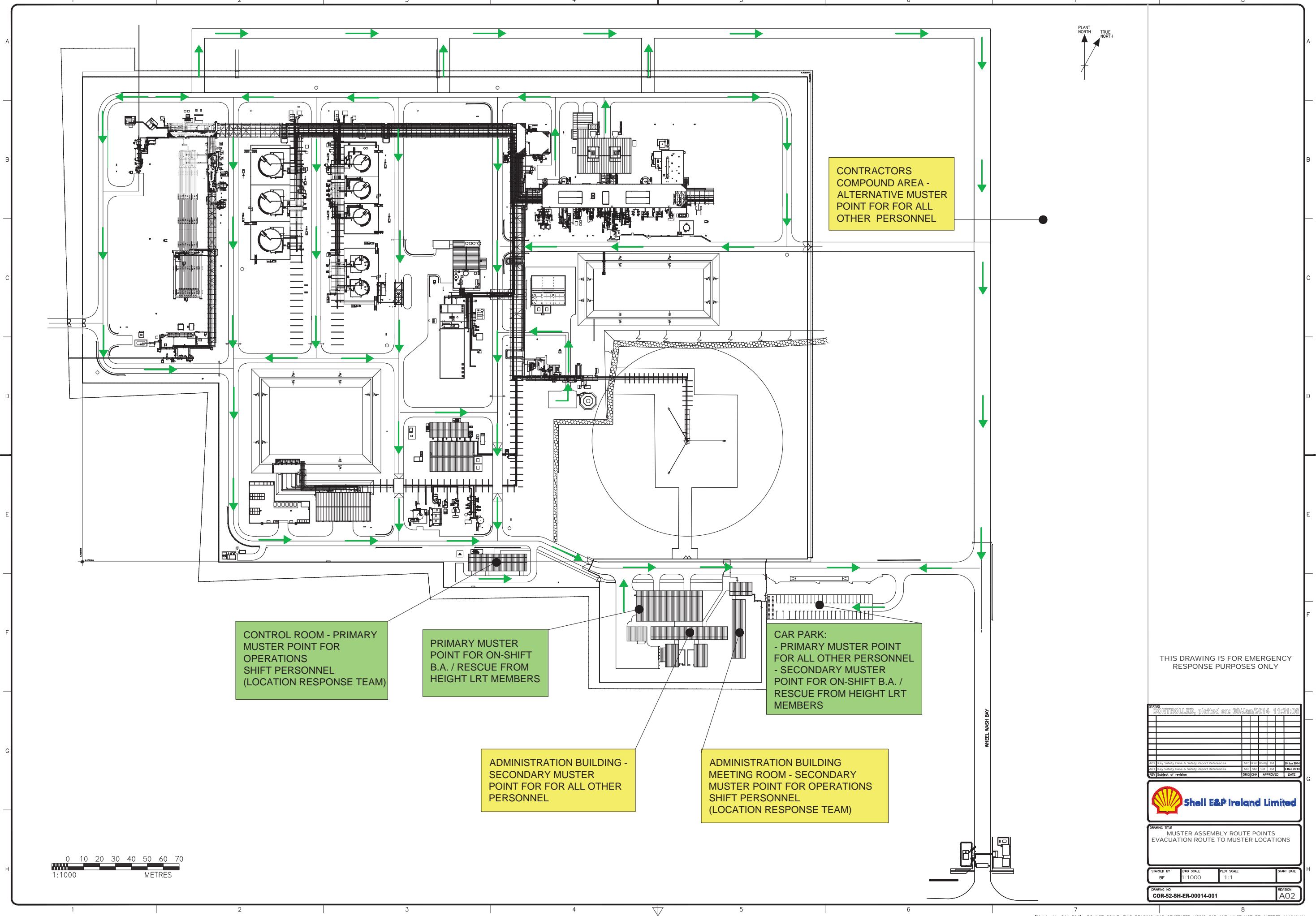
Drawn: N. O'Neill	Project No. COR25MDR0470
Checked: C. Butler	File Ref. COR25MDR0470M2684P02
Approved: C. Butler	Drawing No. Rev.
Scale: 1: 20,000 @ A1	M2684P02 P02
Date: 19/12/2013	

Notes

1. This drawing is the property of RPS. It is a confidential document and must not be copied, used, or its contents divulged without prior written consent.
2. All levels are referred to Ordnance Datum, Malin Head.
3. Ordnance Survey Ireland Licence No. EN 0005013 Copyright Government of Ireland.

10. *Journal of the American Medical Association*, 2000; 284: 1039-1044.





THIS DRAWING IS FOR EMERGENCY
RESPONSE PURPOSES ONLY

CONTROLLED, plotted on: 30/Jan/2014 11:31:06

NO.	REV	DESCRIPTION	DATE	BY	CHK	APP	DATE
1	01	Issue for review	29 Jan 2014	BF			

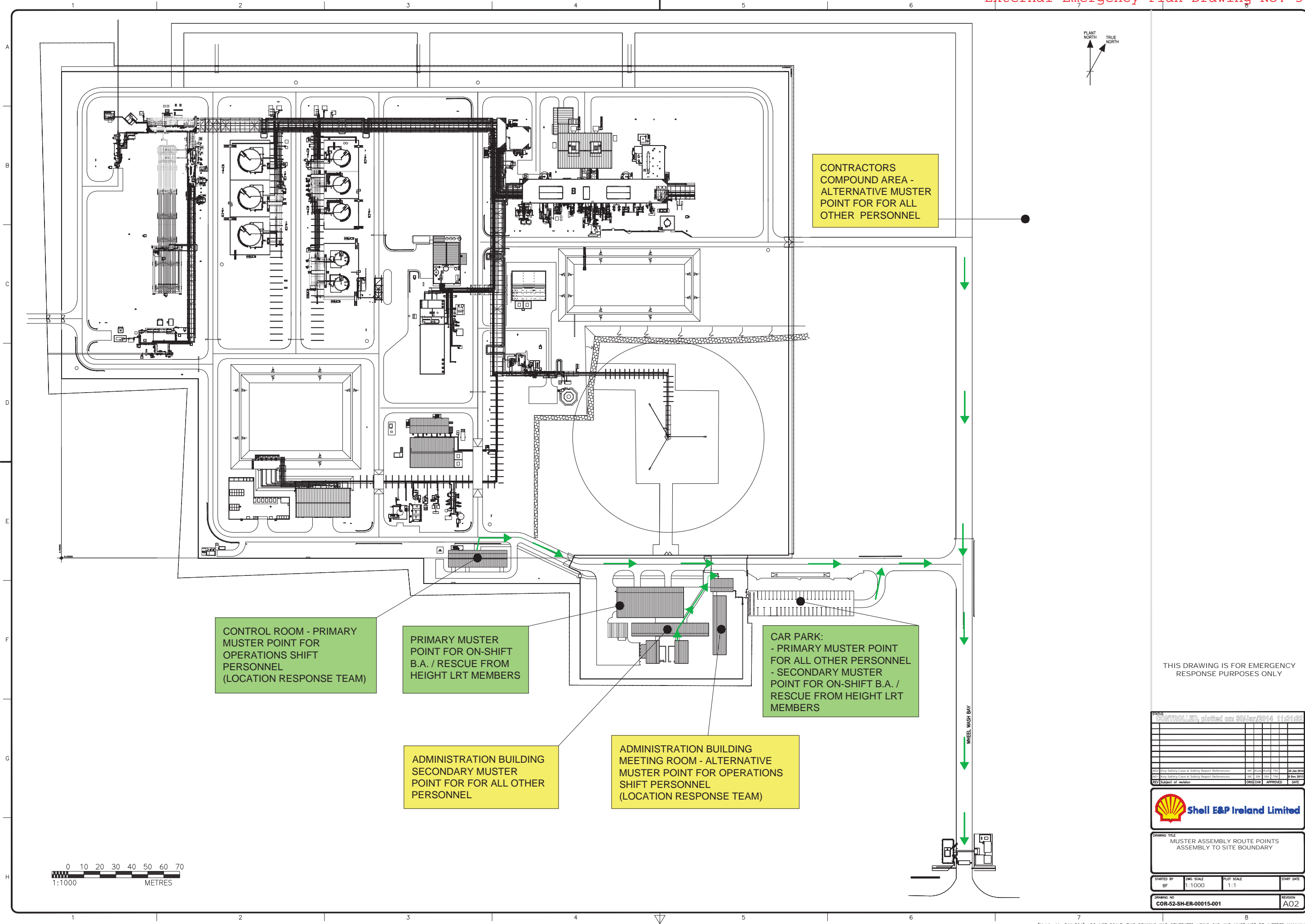
Shell E&P Ireland Limited

DRAWING TITLE
MUSTER ASSEMBLY ROUTE POINTS
EVACUATION ROUTE TO MUSTER LOCATIONS

STARTED BY	DWG SCALE	PLOT SCALE	START DATE
BF	1:1000	1:1	

DRAWING NO.
COR-52-SH-ER-00014-001

REVISION
A02



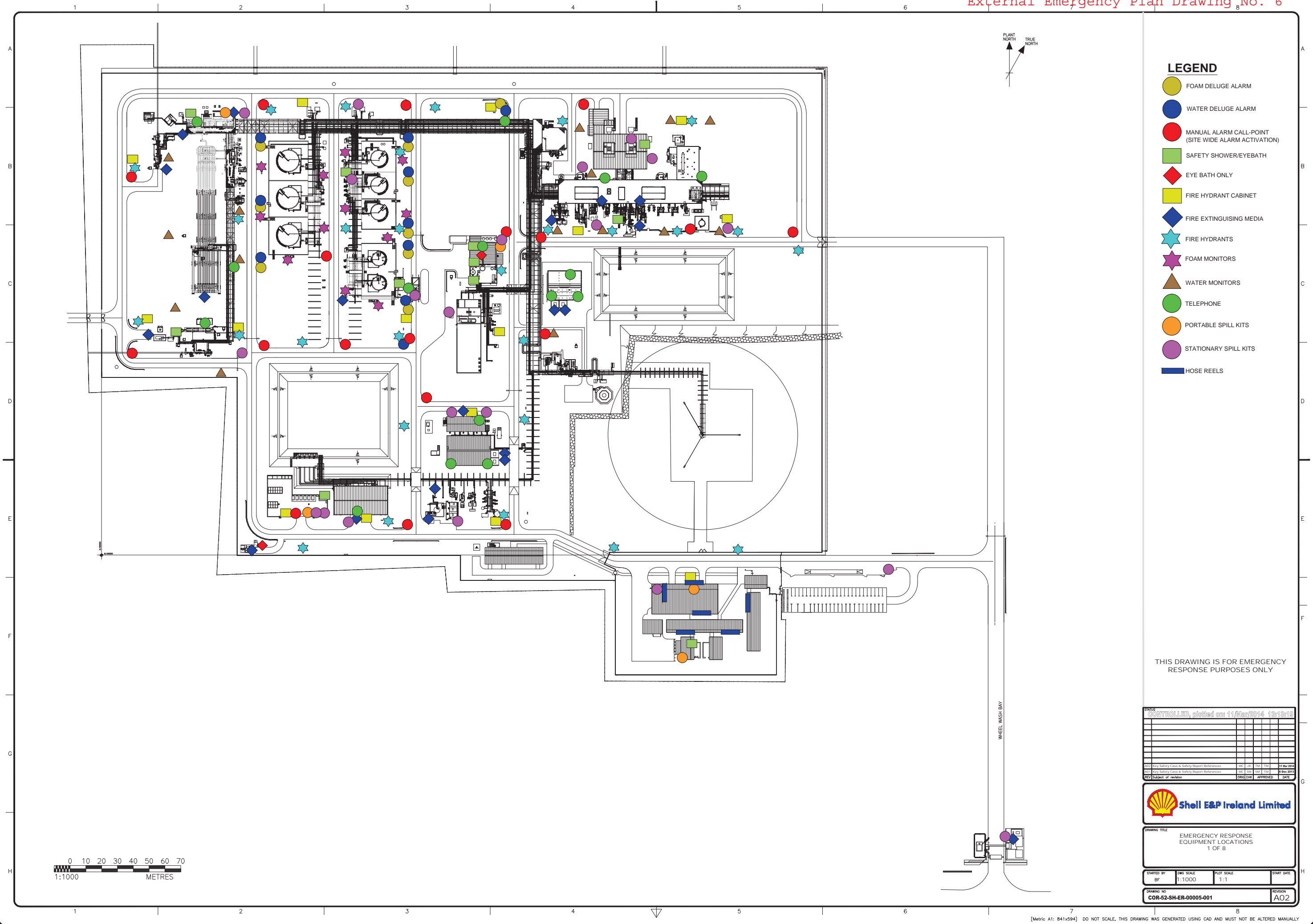
THIS DRAWING IS FOR EMERGENCY
RESPONSE PURPOSES ONLY

CONTROLLED, plotted on: 30/Jan/2014 11:31:32									



DRAWING TITLE
MUSTER ASSEMBLY ROUTE POINTS
ASSEMBLY TO SITE BOUNDARY

STARTED BY BF	DWG SCALE 1:1000	PLOT SCALE 1:1	START DATE
DRAWING NO. COR-52-SH-ER-00015-001	REVISION A02		



LEGEND

- FOAM DELUGE ALARM
- WATER DELUGE ALARM
- MANUAL ALARM CALL-POINT (SITE WIDE ALARM ACTIVATION)
- SAFETY SHOWER/EYEBATH
- ◆ EYE BATH ONLY
- FIRE HYDRANT CABINET
- ◆ FIRE EXTINGUISHING MEDIA
- ★ FIRE HYDRANTS
- ★ FOAM MONITORS
- ▲ WATER MONITORS
- TELEPHONE
- PORTABLE SPILL KITS
- STATIONARY SPILL KITS
- HOSE REELS

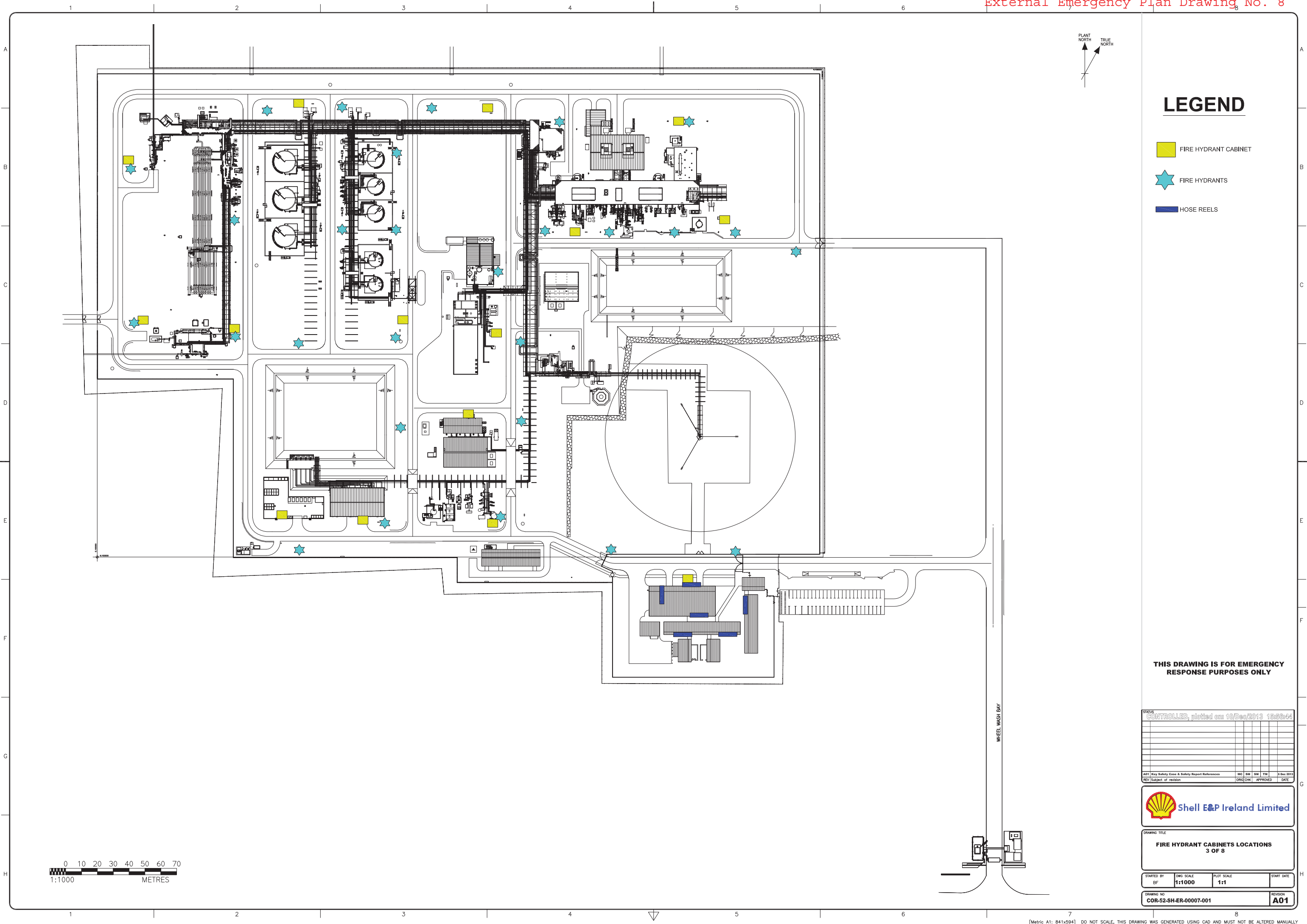
THIS DRAWING IS FOR EMERGENCY RESPONSE PURPOSES ONLY

CONTROLLED, plotted on: 11/Mar/2014 13:13:10				



DRAWING TITLE
EMERGENCY RESPONSE EQUIPMENT LOCATIONS
1 OF 8

STARTED BY BF	DWG SCALE 1:1000	PLOT SCALE 1:1	START DATE
DRAWING NO COR-52-SH-ER-00005-001	REVISION A02		



LEGEND

- FIRE HYDRANT CABINET
- FIRE HYDRANTS
- HOSE REELS

THIS DRAWING IS FOR EMERGENCY RESPONSE PURPOSES ONLY

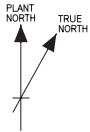
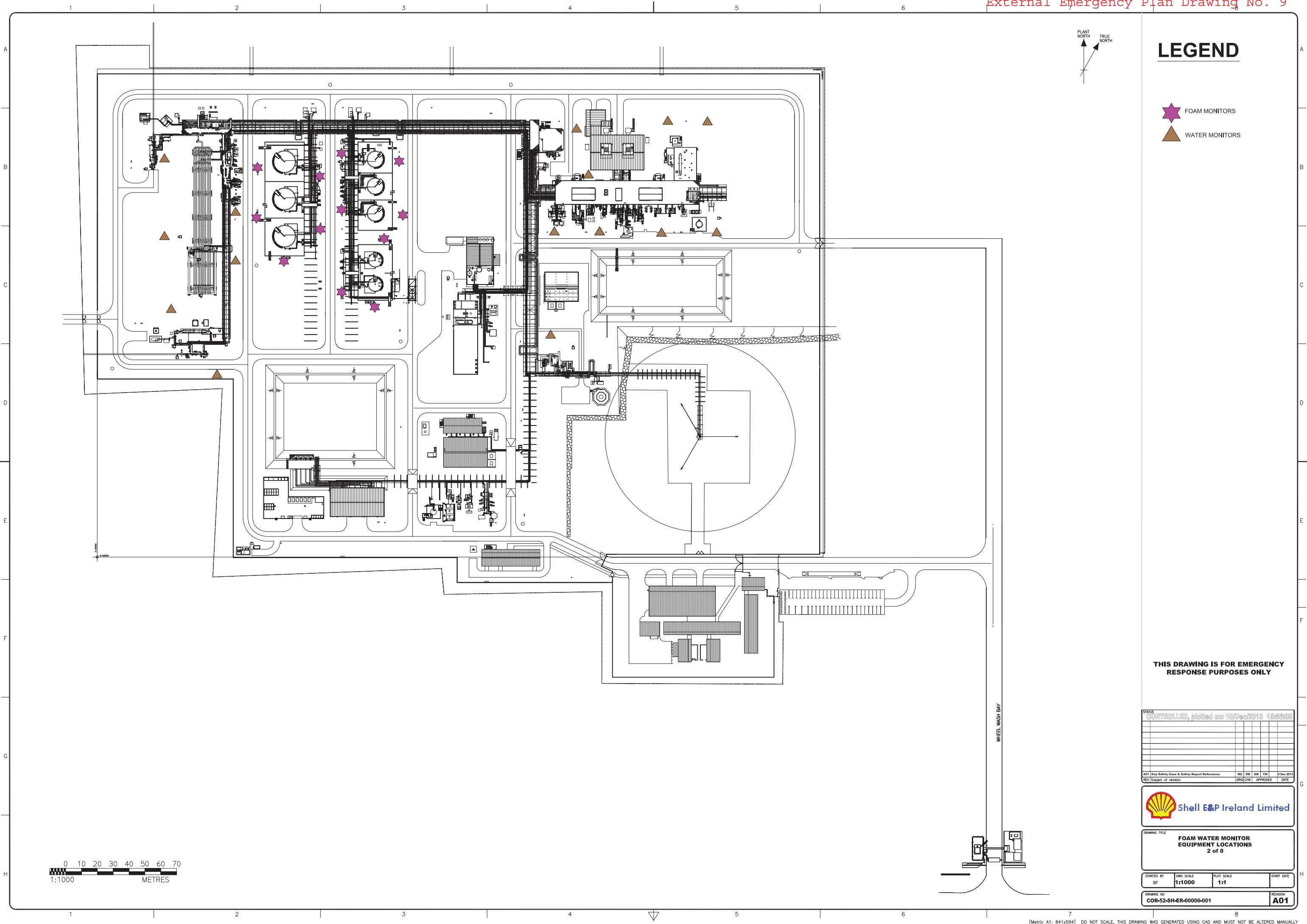
STATUS: CONTROLLED, plotted on: 10/Dec/2013 15:56:44									
AD1 Key Safety Case & Safety Report References				MC	SM	SW	TM	0 Dec 2013	
REV	Subject of revision				ORIG	CHK	APPROVED	DATE	



DRAWING TITLE
FIRE HYDRANT CABINETS LOCATIONS
3 OF 8

STARTED BY BF	DWG SCALE 1:1000	PLOT SCALE 1:1	START DATE
------------------	---------------------	-------------------	------------

DRAWING NO COR-52-SH-ER-00007-001	REVISION A01
--------------------------------------	-----------------



LEGEND

- FOAM MONITORS
- WATER MONITORS

THIS DRAWING IS FOR EMERGENCY
RESPONSE PURPOSES ONLY

STATUS: CONTROLLED, plotted on: 10/Dec/2013 13:56:08									
AD1 Key Safety Case & Safety Report References				MC	SM	SM	TM	0 Dec 2013	
REV Subject of revision				ORIG	CHK	APPROVED		DATE	

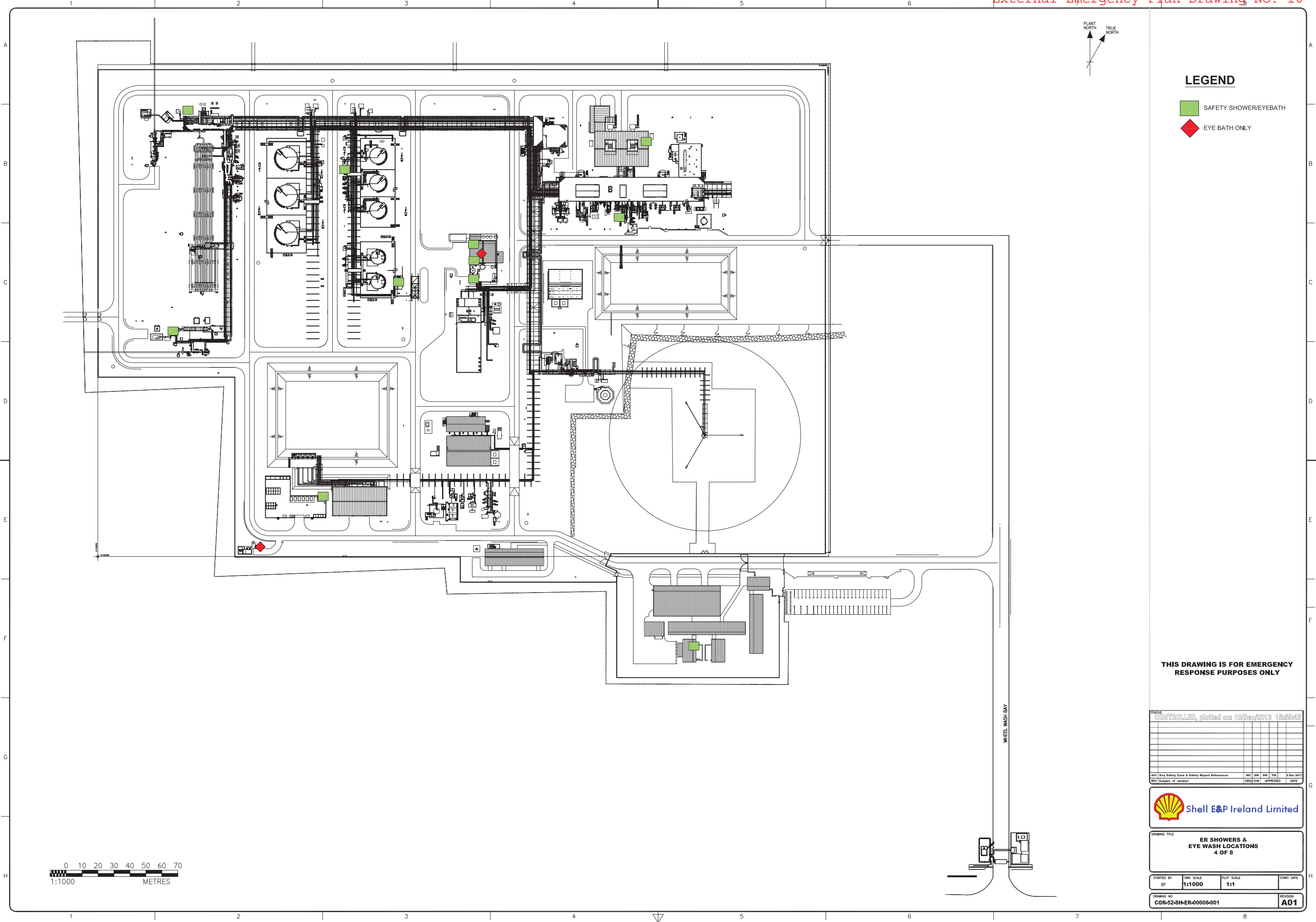


DRAWING TITLE
**FOAM WATER MONITOR
EQUIPMENT LOCATIONS
2 of 8**

STARTED BY BF	DWG SCALE 1:1000	PLOT SCALE 1:1	START DATE
------------------	---------------------	-------------------	------------

DRAWING NO COR-52-SH-ER-00006-001	REVISION A01
--------------------------------------	-----------------

0 10 20 30 40 50 60 70
1:1000 METRES



LEGEND

- SAFETY SHOWER/EYEBATH
- EYE BATH ONLY

THIS DRAWING IS FOR EMERGENCY
RESPONSE PURPOSES ONLY

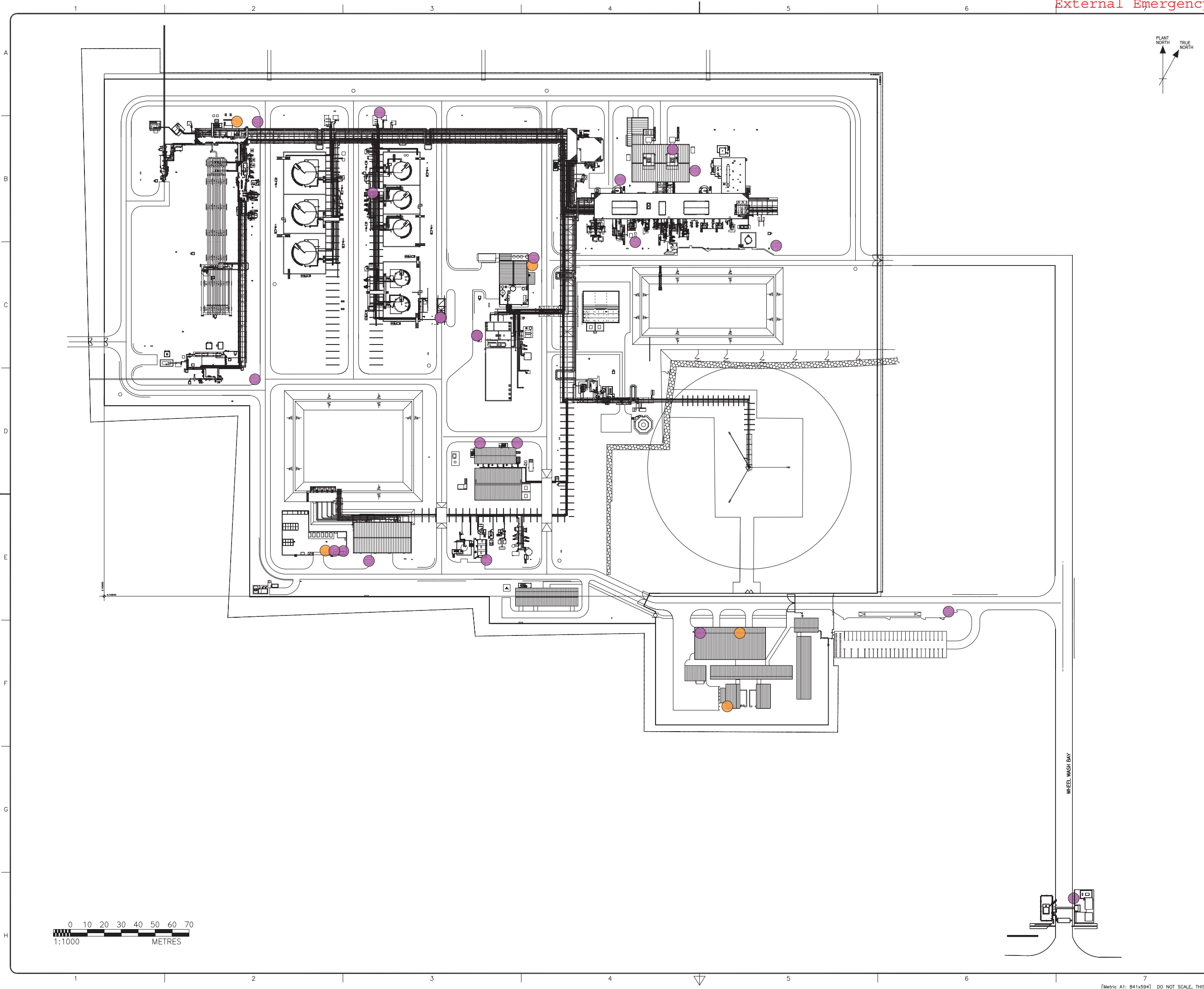
STATUS				
CONTROLLED, plotted on: 10/Dec/2013 15:58:48				
A01 Key Safety Cases & Safety Report References				
MC	SR	SR	TM	6 Dec 2013
REV Subject of revision				
ORIG	CHK	APPROVED	DATE	



DRAWING TITLE
ER SHOWERS &
EYE WASH LOCATIONS
4 OF 8

STARTED BY	DWG SCALE	PLOT SCALE	START DATE
BF	1:1000	1:1	

DRAWING NO	REVISION
COR-52-SH-ER-00008-001	A01



LEGEND

- PORTABLE SPILL KITS
- STATIONARY SPILL KITS

- NOTES
- ALL SPILL KITS CONTAIN MATERIALS TO TREAT BOTH ACID AND OIL SPILLS.

THIS DRAWING IS FOR EMERGENCY
RESPONSE PURPOSES ONLY

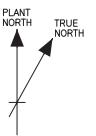
STATUS: CONTROLLED, plotted on: 10/Dec/2013 16:02:04									
AD1 Key Safety Case & Safety Report References				MC	SM	SM	TM	6 Dec 2013	
REV Subject of revision				ORIG	CHK	APPROVED		DATE	



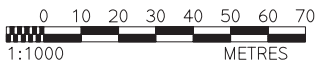
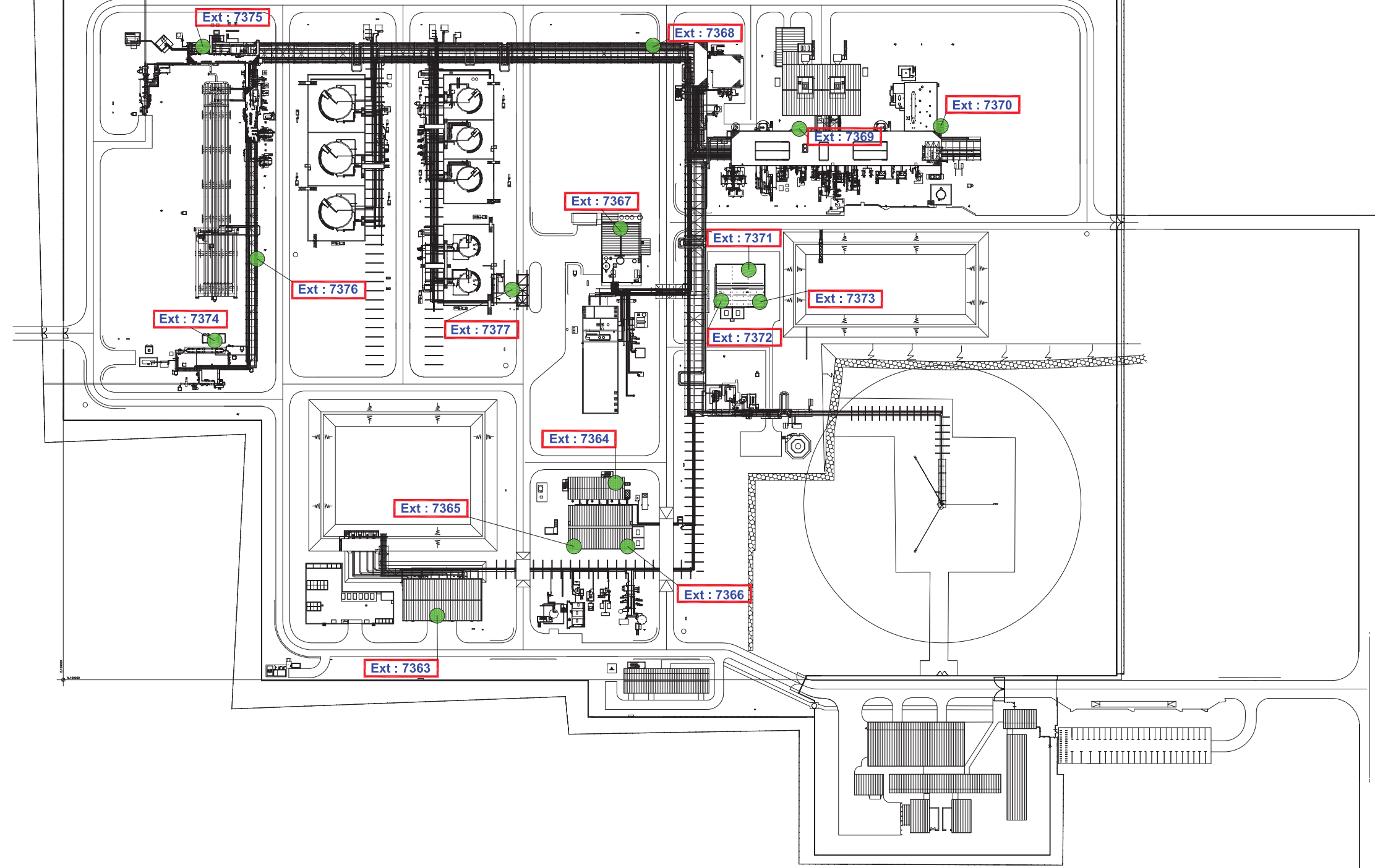
DRAWING TITLE
**PORTABLE STATIONARY
SPILL KIT LOCATIONS
8 OF 8**

STARTED BY BF	DWG SCALE 1:1000	PLOT SCALE 1:1	START DATE
------------------	---------------------	-------------------	------------

DRAWING NO COR-52-SH-ER-00012-001	REVISION A01
--------------------------------------	-----------------



LEGEND



THIS DRAWING IS FOR EMERGENCY RESPONSE PURPOSES ONLY

STATUS											
CONTROLLED, plotted on: 10/Dec/2013 16:00:21											
AD1	Key Safety Case & Safety Report References						MC	SR	SR	TM	0 Dec 2013
REV	Subject of revision						ORIG	CHK	APPROVED	DATE	



DRAWING TITLE
EMERGENCY TELEPHONE LOCATIONS
5 OF 8

STARTED BY BF	DWG SCALE 1:1000	PLOT SCALE 1:1	START DATE
------------------	---------------------	-------------------	------------

DRAWING NO COR-52-SH-ER-00009-001	REVISION A01
--------------------------------------	-----------------

NOTES:

1. THE SITE TOPOGRAPHY IS REFERENCED TO ORDINANCE DATUM AT MALIN HEAD USING THE ORDINANCE BENCH MARK AT BELLANABOY BRIDGE WHICH IS 13.192m ABOVE THE DATUM AT MALIN HEAD.
2. USE FIGURED DIMENSIONS ONLY - DO NOT SCALE.
3. THIS MAPPING IS BASED ON ORTHO-RECTIFIED AERIAL SURVEYS CARRIED OUT BY BKS SURVEYS LIMITED IN AUGUST 2003.
4. MAPPING OUTSIDE OF SITE BOUNDARY UPDATED IN DECEMBER 2007 FOLLOWING REVISION OF OS MAPPING IN 2006.

LEGEND:

- UNCONTAMINATED SURFACE WATER FROM TERMINAL AND LAND SURROUNDING TERMINAL VIA SETTLEMENT PONDS.
- GROUND WATER ISOLATION POINT, MANHOLE 26, CLOSED MANUALLY ON HIGH ALARM READING FROM TC ANALYSER. SEE P&ID L3847-020-110-0080 FOR FURTHER DETAILS.
- UNCONTAMINATED SURFACE WATER IS ISOLATED BY MOTOR OPERATED VALVE AUTOMATICALLY VIA HIGH READING IN TC ANALYSER OR CONFIRMED DETECTION OF FIRE ON TERMINAL OR CLOSED MANUALLY FOLLOWING A SPILLAGE ON THE TERMINAL. VALVE WILL BE MANUALLY OPENED USING TOO ANALYSER READING FOR CONFIRMATION OF NON-CONTAMINATION. SEE P&ID L3847-020-110-0080 FOR FURTHER DETAILS.
- POTENTIALLY CONTAMINATED PAVED AREAS (KERBED) AND ROAD AREAS (KERBED) TO WASTE WATER TREATMENT PLANT
TOTAL AREA = 23314m²
- RETAINED ON SITE FOR FIRE FIGHTING
TOTAL AREA = 3780m²
- CONTROLLED DRAINAGE AREA TO WASTE WATER TREATMENT PLANT
TOTAL AREA = 7185m²
- ADMINISTRATION BUILDING ROOFS DISCHARGE TO LOCAL PEAT DITCHES
TOTAL AREA = 2081m²
- NON-SHADED AREAS DRAIN TO LOCAL PEAT DITCHES.
- EHT EMERGENCY HOLDING TANK.
- MH26 - MANHOLE 26.
- WASTE WATER TREATMENT PLANT.

JPI DOCUMENT No.
COR-36-EMS-79207100-D/A.01U/0039

CONTROLLED, plotted on: 18/Dec/2013 14:50:25				

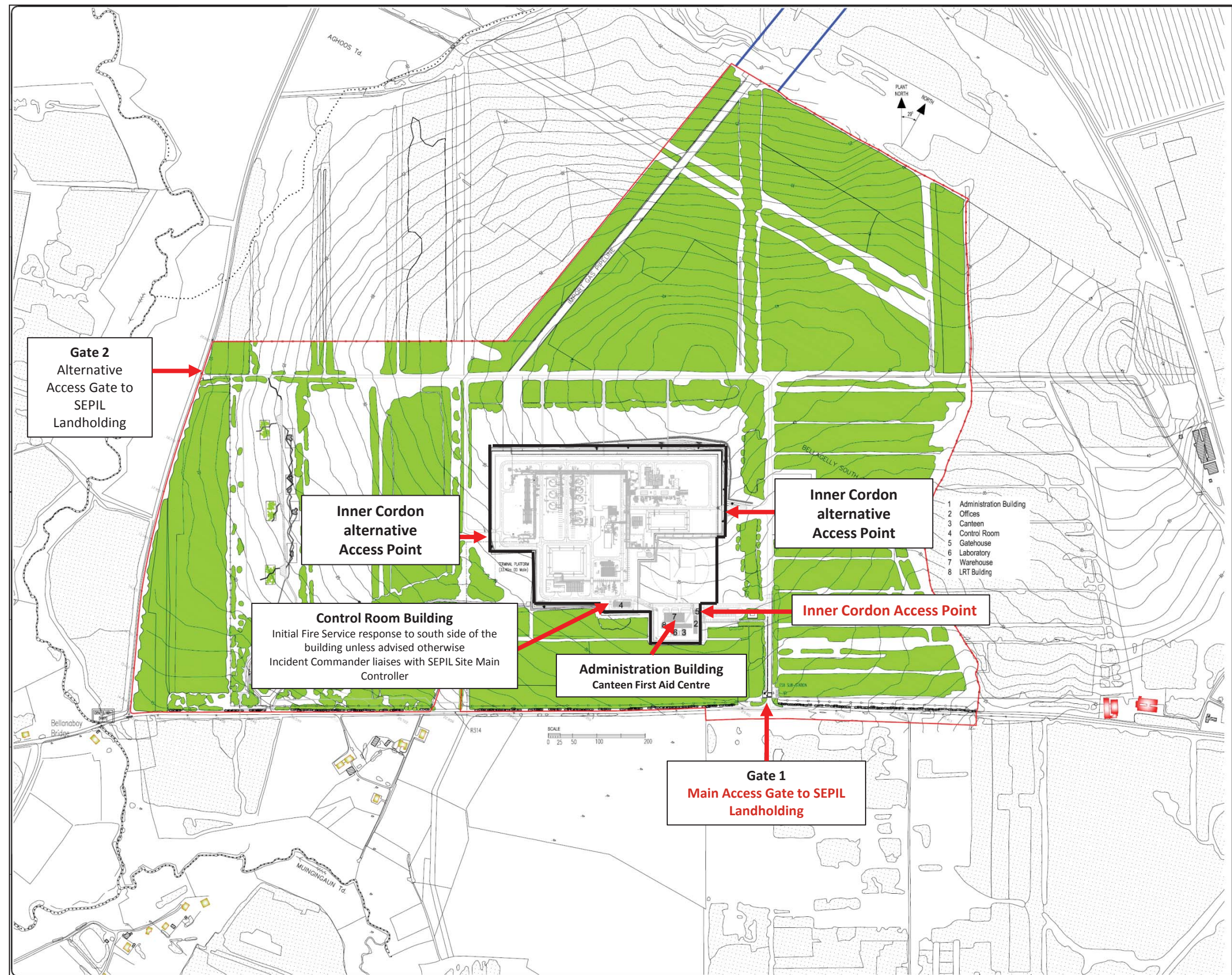


DRAWING TITLE ESTABLISHMENT PLANNED CATCHMENTS			
STARTED BY MAC	DWG SCALE N.T.S.	PLOT SCALE 1:1	START DATE 05.12.2013
DRAWING NO. COR-52-SH-0120-001	REVISION A01		

Location of RVP's (Note: RVP3 does not apply to the BBGT)



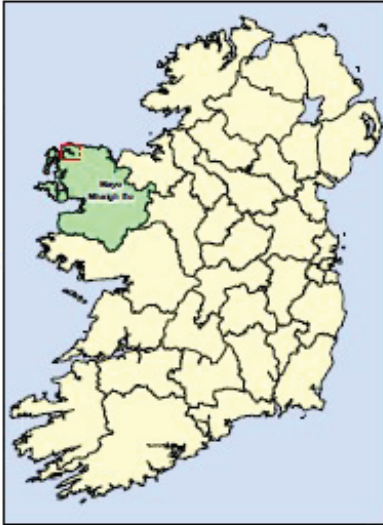
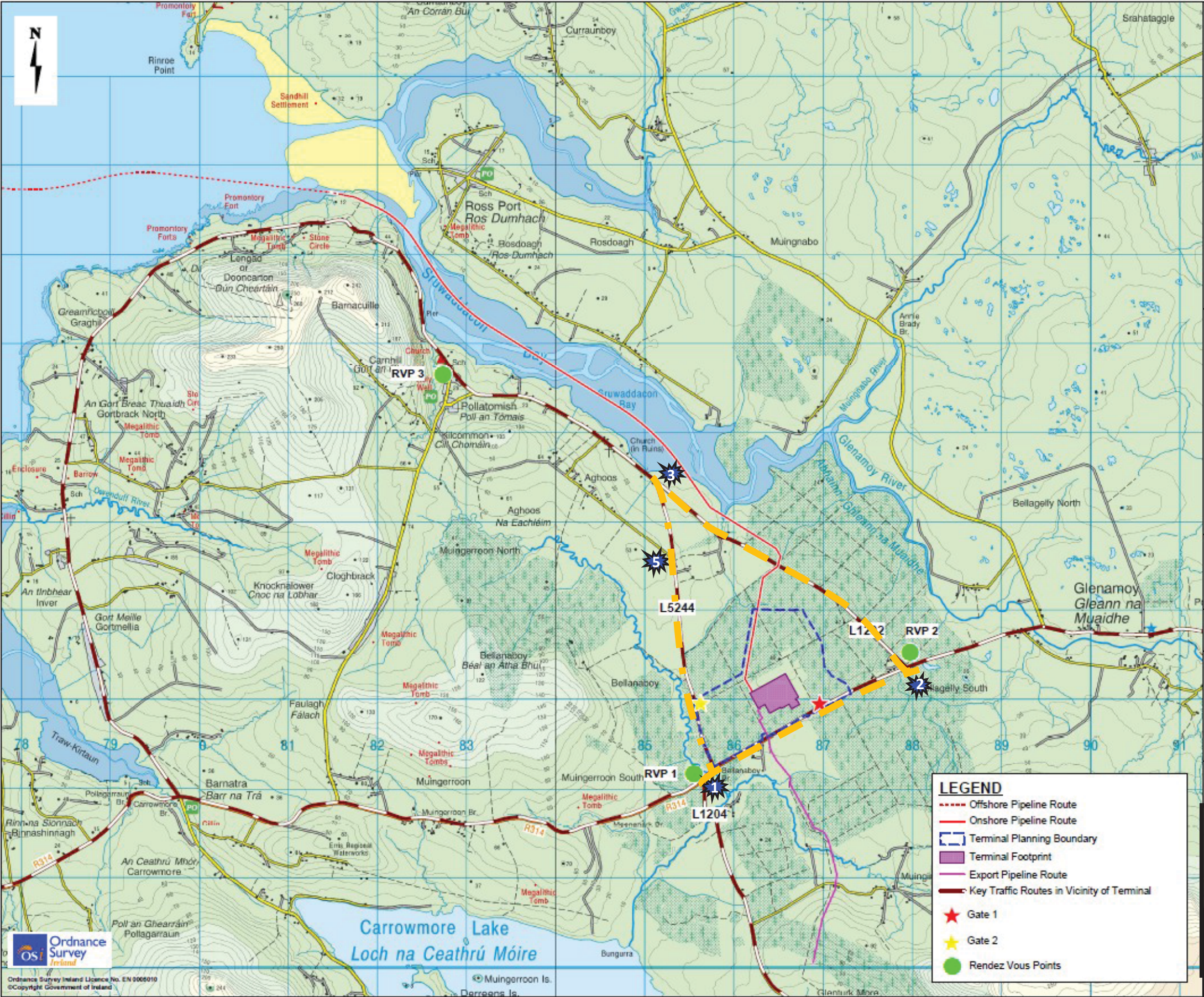
Inner Cordon



RVP 1 OUTER CORDON

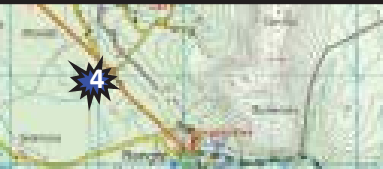


RVP 2 OUTER CORDON



Project Corrib

RVP 2
Outer Cordon
An Garda Síochána
Access Control Point



No. 4 Junction of R313/L1204
may be used to expand the
Outer cordon to include the
L1204

RVP 1 & 2 TRAFFIC CORDONS



RVP1 Alternative Traffic Cordon



An Garda Siochana Access Control Points

External Emergency Plan Drawing No. 20

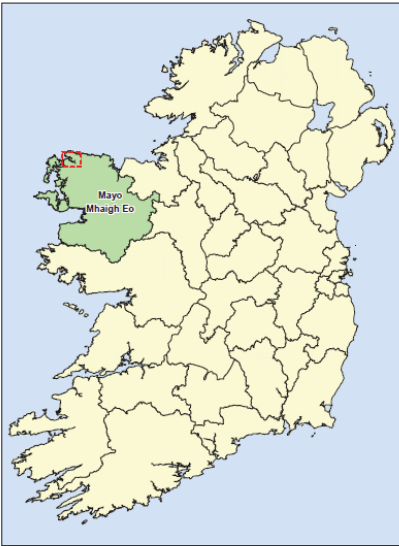
No. 1: R314/L1204 Junction

No. 2 R314/L1202 Junction

No. 3 L1202/Leenamore Rd. Junction

No. 4 R313/L1204 Junction

No. 5 Leenamore/Aughoose Junction



Shell E&P Ireland Limited
Comb House,
52 Leeson Street Lower,
Dublin 2,
Republic of Ireland.

An Garda Siochana
Access Control Point



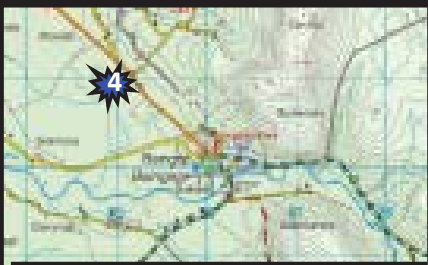
Rendezvous Point



Onshore pipeline



Offshore pipeline



No. 4 Junction of R313/L1204



Ordnance Survey Ireland licence No. EN 0005010.
© Copyright Government of Ireland