

Appendix 4 SITE ARRANGEMENTS FOR RESPONDING EMERGENCY SERVICES



SITE ARRANGEMENTS FOR RESPONDING EMERGENCY SERVICES

**Bellanaboy Bridge Gas Terminal
(‘Corrib Gas Terminal’)**

**Bellanaboy Bridge
Bellagelly South
Barnatra
Ballina
Co. Mayo**

2014

TABLE OF CONTENTS

INTRODUCTION.....	3
SECTION 1 RENDEZVOUS POINTS & HOLDING AREAS.....	4
1.1 Rendezvous Points.....	4
1.1.1 Location of Rendezvous Point 1.....	4
1.1.2 Location of Rendezvous Point 2.....	5
1.1.3 Access Routes to Rendezvous Points.....	5
SECTION 2 ON-SITE CO-ORDINATION POINT	7
2.1 On-Site Co-ordination Point	7
2.1.1 Initial On-Site Co-ordination Point.....	7
2.2 On-Site Co-ordination Centre	7
SECTION 3 CORDONS.....	8
3.1 Inner Cordon.....	8
3.1.1 Inner Cordon Access Point.....	8
3.2 Outer Cordon.....	8
3.2.1 Outer Cordon Access Point	8
3.3 Traffic Cordons	9
SECTION 4 SITE MANAGEMENT DETAILS	10
4.1 Danger Area	10
4.2 Casualty Clearing Station & Ambulance Loading Area	10
4.3 Helicopter Landing Site	10
SECTION 5 ACCESS CONTROL	11
5.1 Access Control	11
APPENDIX 1 LOCATION OF BELLANABOY BRIDGE GAS TERMINAL.....	12
APPENDIX 2 ROUTE MAPS TO THE RENDEZVOUS POINTS.....	13
APPENDIX 3 DIRECTIONS TO THE RENDEZVOUS POINTS (RESPONDING PROTOCOLS)	18
APPENDIX 4 INNER CORDON	25
APPENDIX 5 OUTER CORDONS.....	26
APPENDIX 6 TRAFFIC CORDONS AND AN GARDA SÍOCHÁNA ACCESS CONTROL POINTS	28
APPENDIX 7 ACCESS CONTROL.....	30

INTRODUCTION

This document has been developed to assist the emergency services from the principal response agencies (PRA's) respond to an incident at the Bellanaboy Bridge Gas Terminal (BBGT).

This document outlines the particular Site Management Arrangements and Traffic Cordons to be put in place.

Refer to Appendix 1 for a site location map.

Please note that a separate Site Arrangements for Responding Emergency Services Document has been developed for an emergency event associated with the Corrib Gas Onshore Pipeline and Landfall Valve Installation.

SECTION 1 RENDEZVOUS POINTS & HOLDING AREAS

1.1 Rendezvous Points

The Rendezvous Point is the location to which all resources responding to the emergency are directed in the first instance (apart from the first Fire Service response vehicle which will proceed onto the terminal and park at the rear of the Control Room).

An Garda Síochána organise the Rendezvous Point. Other agencies may have a Marshalling Officer present to direct responding vehicles to the scene.

There are two Rendezvous Points associated with an emergency event at the BBGT. (A third Rendezvous Point, 'RVP 3', is associated with the Corrib Gas Onshore Pipeline and is outside the scope of this document.) For any incident, only one Rendezvous Point will be used.

In the event of an emergency, the SEPIL Control Room Operator, when contacting the emergency services, will direct the responding agency to RVP 1 or RVP 2.

The primary Rendezvous Point for the terminal is RVP 1. The alternative Rendezvous Point, RVP 2, may be selected based on the incident details and other factors, including wind direction.

Refer to Appendix 2 for an overview of the location of the Rendezvous Points.

1.1.1 Location of Rendezvous Point 1

Rendezvous Point 1 is located at the lay-by adjacent to the junction of R314 and L1204 (Haulage Road). It is located 1.3 km west of Gate 1 and approximately 6.1km east of Barnatra.



Figure 1.1 Rendezvous Point 1 (RVP 1)

1.1.2 Location of Rendezvous Point 2

Rendezvous Point 2 is located at the junction of R314 and L1202. It is located at least 1 km east of the terminal from Gate 1.



Figure 1.2 Rendezvous Point 2 (RVP 2)

1.1.3 Access Routes to Rendezvous Points

The emergency services responding to an incident at the BBGT will travel from various locations, as deemed necessary by each of the individual principal response agencies. Accordingly, the access route to the designated Rendezvous Point will vary based on the direction of approach. The route to each Rendezvous Point is predetermined to facilitate a more efficient and co-ordinated response.

Refer to Appendix 2 for route maps from Belmullet and Castlebar / Ballina to each Rendezvous Point and refer to Appendix 3 for maps, photographs and directions to each point.

1.2 Holding Areas

The Holding Area is the location that resources which are not immediately required at the site will wait until requested. An Garda Síochána will organise the Holding Area. Other services may have a Marshalling Officer present to direct responding vehicles into action.

The location of the Holding Area is determined by the choice of the designated Rendezvous Point.

1.2.1 Location of Holding Area 1

Holding Area 1 corresponds to RVP 1 and is located adjacent to the junction of the R314 and L1204 (Haulage Route), both on the L1204 and R314, as deemed necessary.

Holding Area 1 is located in close proximity to Rendezvous Point 1.

1.2.2 Location of Holding Area 2

Holding Area 1 corresponds to RVP 2 and is located adjacent to the junction of the R314 and L1202, both on the L1202 and the R314, as deemed necessary.

Holding Area 2 is located in close proximity to Rendezvous Point 2.

SECTION 2 ON-SITE CO-ORDINATION POINT

2.1 On-Site Co-ordination Point

The On-site Co-ordination Point is the location from which the PRA's will control, direct and co-ordinate their organisations response to the emergency.

A representative from SEPIL will attend the Initial On-site Co-ordination Point.

2.1.1 Initial On-Site Co-ordination Point

The Initial On-site Co-ordination Point is located at the designated Holding Area for the incident. The On-site Co-ordination Point may be repositioned depending on the location, type and duration of the incident.

2.2 On-Site Co-ordination Centre

If a Major Emergency is declared under the Framework for Major Emergency Management, the On-Site Co-ordination Group may convene at the SEPIL Office in Belmullet (Unit 4, Údarás na Gaeltachta, Belmullet) or at a suitable alternative location.

SECTION 3 CORDONS

3.1 Inner Cordon

The Inner Cordon defines an area where the emergency services work to rescue casualties and survivors and deal with the substance of the emergency.

The Inner Cordon should be under the control of the lead agency.

For the BBGT, the Inner Cordon is defined by the double-fence line around the main terminal site. The cordon will be secured by security staff from the terminal acting under the direction of the lead agency. Persons working inside this area should have appropriate Personnel Protective Equipment (PPE).

Refer to Appendix 4 for a map showing the Inner Cordon.

3.1.1 Inner Cordon Access Point

The main Inner Cordon Access Point is located at the BBGT Administration Building. An alternative Inner Cordon Access Point is also available on the east and west side of the terminal double fence line.

The access point should be under the control of the lead agency. This point will also be manned by security staff from the terminal.

Refer to Appendix 4 for a map showing the Inner Cordon Access Points.

3.2 Outer Cordon

The Outer Cordon seals off an extensive area around the site. The area between the Inner Cordon and Outer Cordon is used by the principal response agencies to provide support to personnel within the Inner Cordon. This area can be used for the Casualty Clearing Station, the Ambulance Loading Area, etc.

Refer to Appendix 5 for a map showing the Outer Cordon.

3.2.1 Outer Cordon Access Point

The Outer Cordon Access Points are controlled by An Garda Síochána.

Refer to Appendix 5 for a map showing the Outer Cordon Access Points.

3.3 Traffic Cordons

Traffic cordons have been identified to assist in the control of emergency services vehicles and private motor vehicles in the event of an incident at the terminal. The purpose of the traffic cordon is to ensure free passage of emergency response vehicles into and out of the site and to prevent congestion at and around the site.

Traffic Cordons are managed by An Garda Síochána.

The main traffic cordon is similar to the outer cordon; it is the triangle of roads around the terminal site. The Access Control Points for the traffic cordon are Points 1, 2, 3 and 5. This cordon can be extended to the L1204 (previously the Haulage Route) by managing Access Control Point 4 located at junction of the L1204 with the R313 near Bangor Erris.

An alternative traffic cordon, if required, can be arranged along the R314 leading east from the site through Glenamoy and on into Ballina (junction with the N59). This cordon would require the management of the junction with the R315 at Ballycastle, as well as other locations on the R314 and N59.

Traffic Cordons may be repositioned depending on the location, type and duration of the incident.

Refer to Appendix 6 for maps showing the locations of the Traffic Cordons and Access Control Points.

SECTION 4 SITE MANAGEMENT DETAILS

4.1 Danger Area

A Danger Area may be defined as part of site management arrangements where there is a definite risk to rescue personnel, over and above that which would normally pertain at emergency operations. The Danger Area will reflect the type of incident and will be determined by the Controller of Operations of the lead agency (advised by the Rostered Senior Fire Officer / Fire Service Incident Commander). Due to the size of the Terminal more than one Danger area may be declared.

If a Danger Area is declared, an access point will be established to act as a safety checkpoint to monitor personnel within the area.

4.2 Casualty Clearing Station & Ambulance Loading Area

The Casualty Clearing Station and Ambulance Loading Area is located at the Administration Building (Canteen, First Aid Room).

If this building is not available, these areas may be relocated at an alternative suitable location such as Gate 1 or the designated Holding Area.

4.3 Helicopter Landing Site

A landing site will be considered based on suitability and availability, following consultation between the National Aeromedical Co-ordination Centre, the helicopter crew and the ground ambulance.

SECTION 5 ACCESS CONTROL

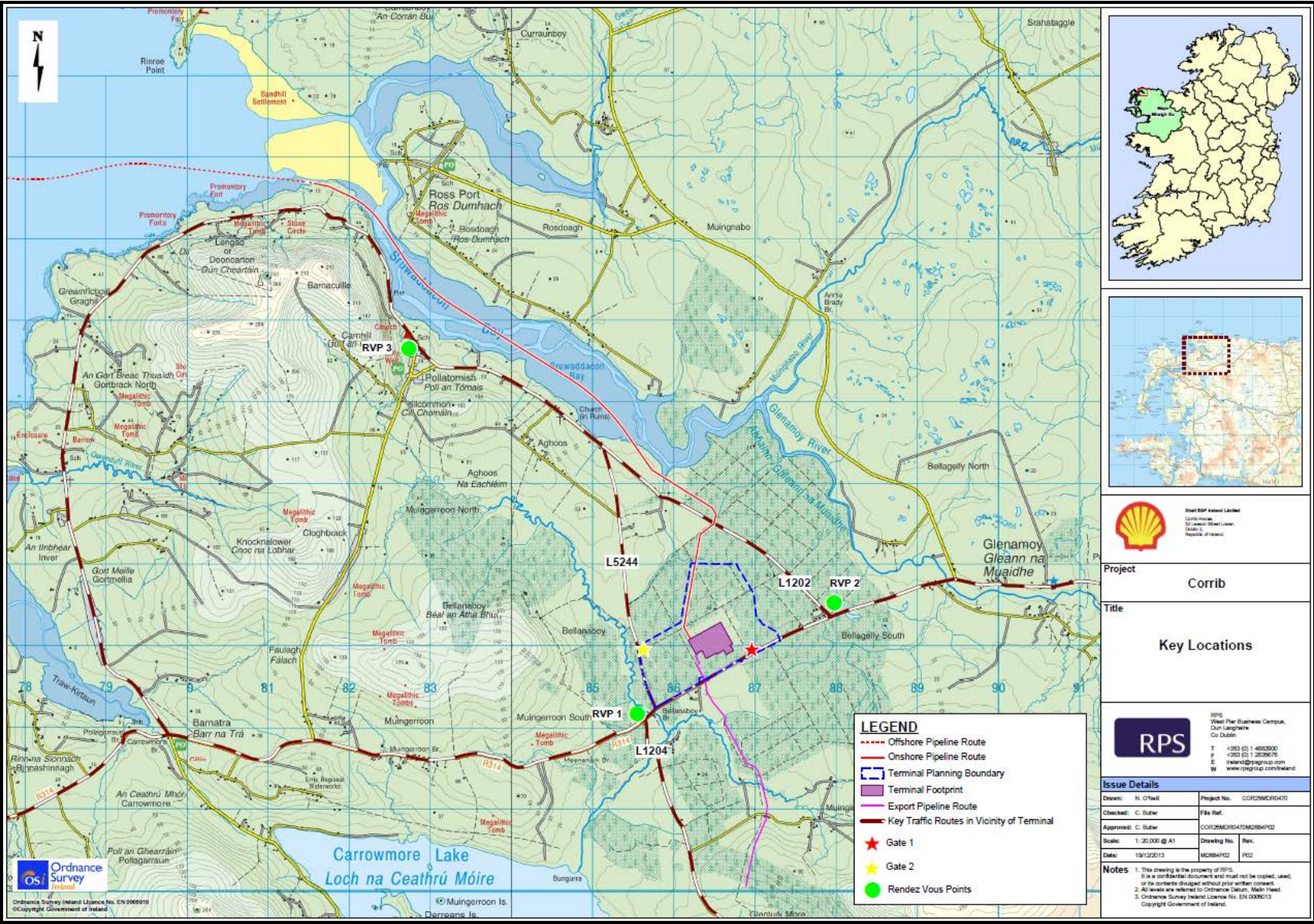
5.1 Access Control

Access control is managed by An Garda Síochána.

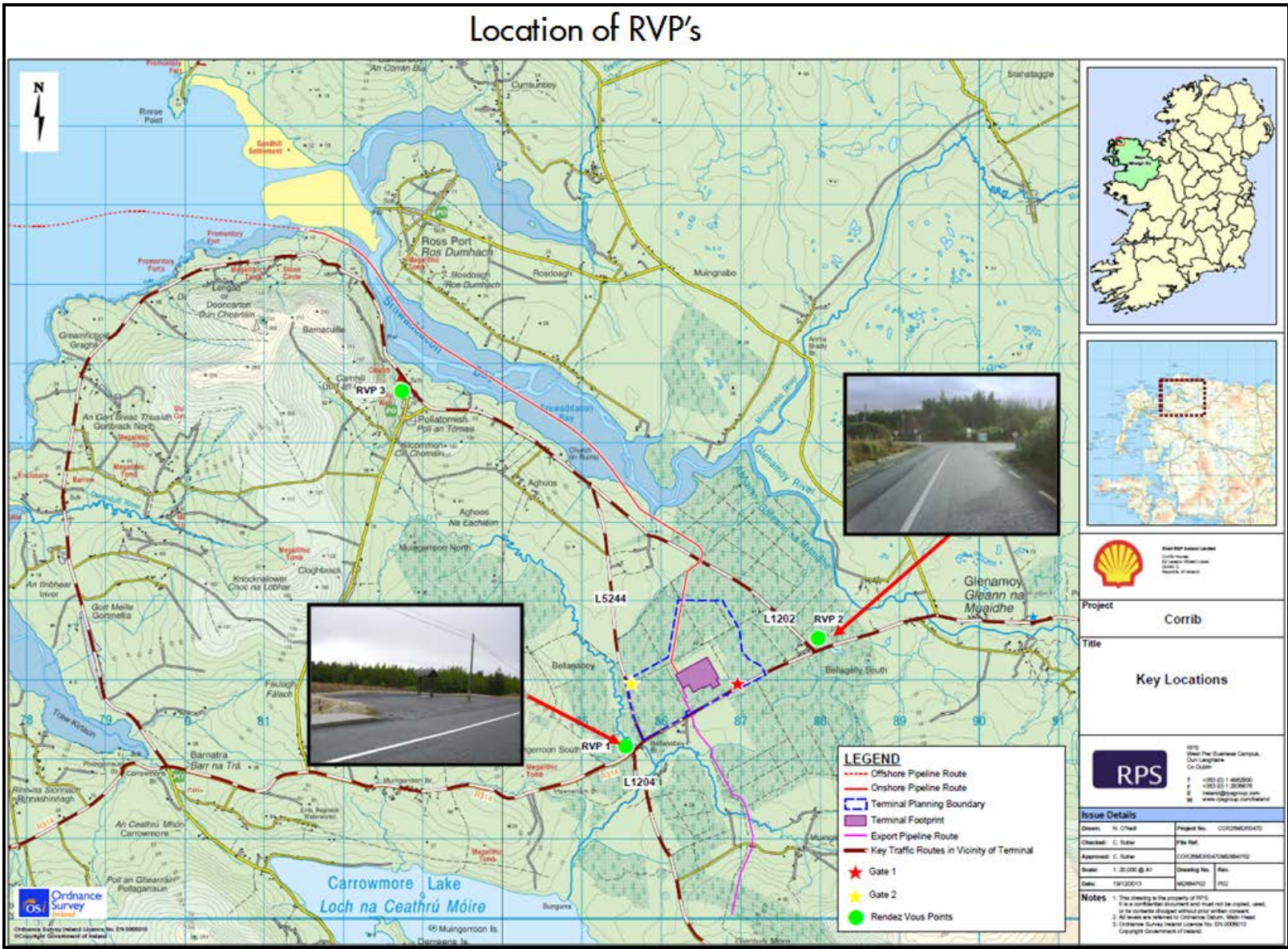
Refer to Appendix 7 for details of restrictions in the event that Traffic Cordons are established.

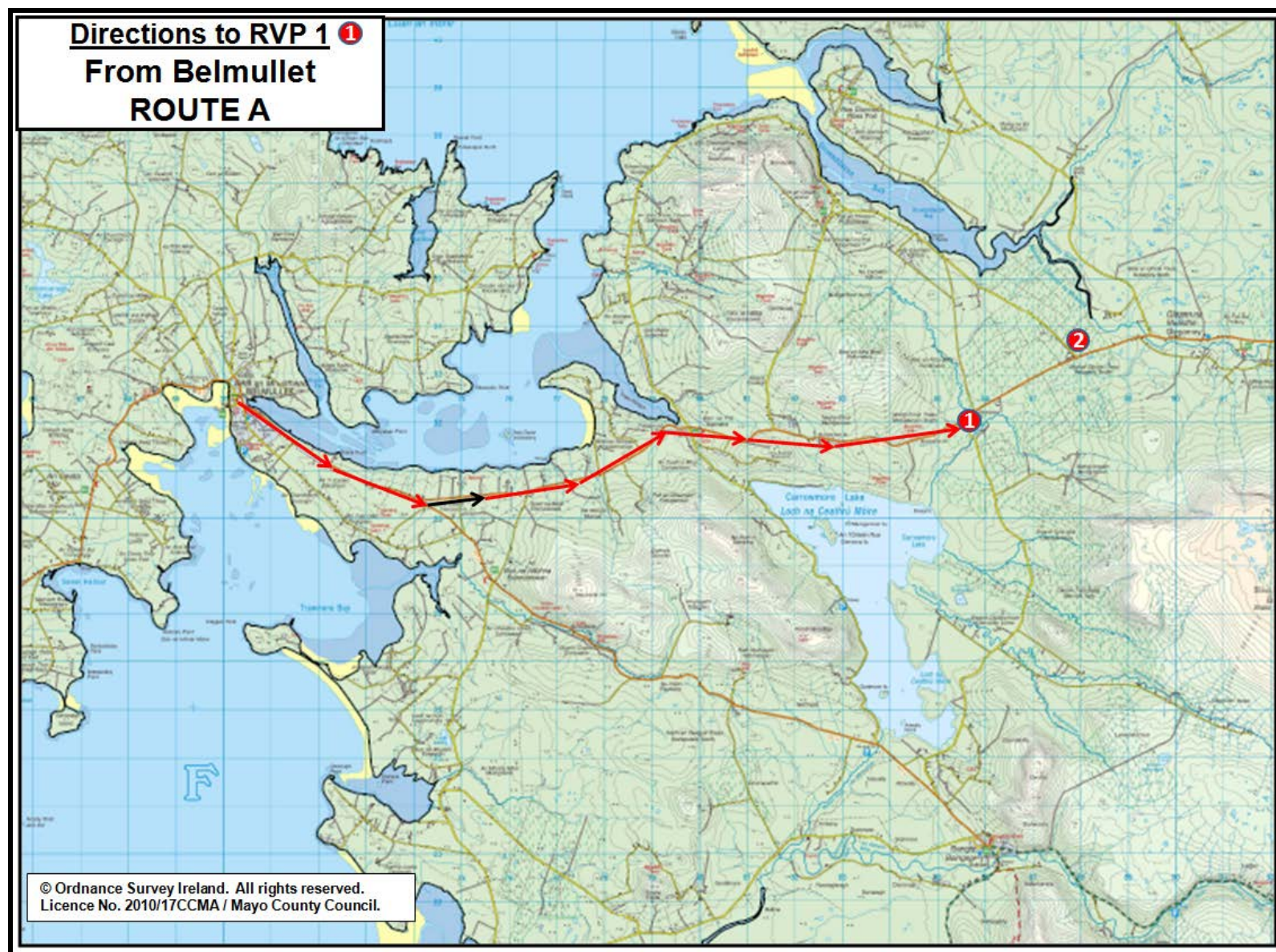
Local residents wishing to pass any manned An Garda Síochána Access Control Point would be required to identify themselves prior to being permitted to pass through.

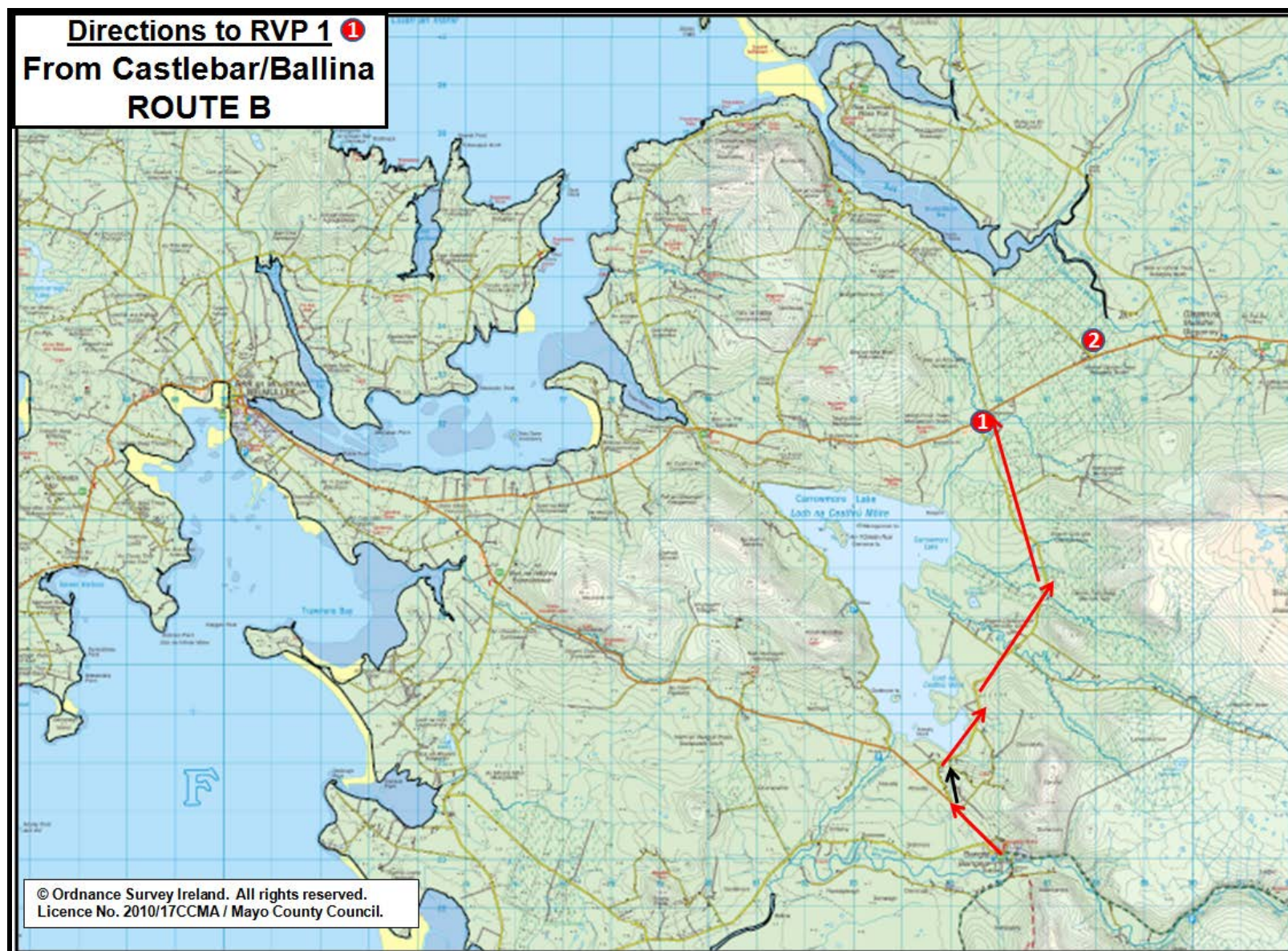
APPENDIX 1 LOCATION OF BELLANABOY BRIDGE GAS TERMINAL

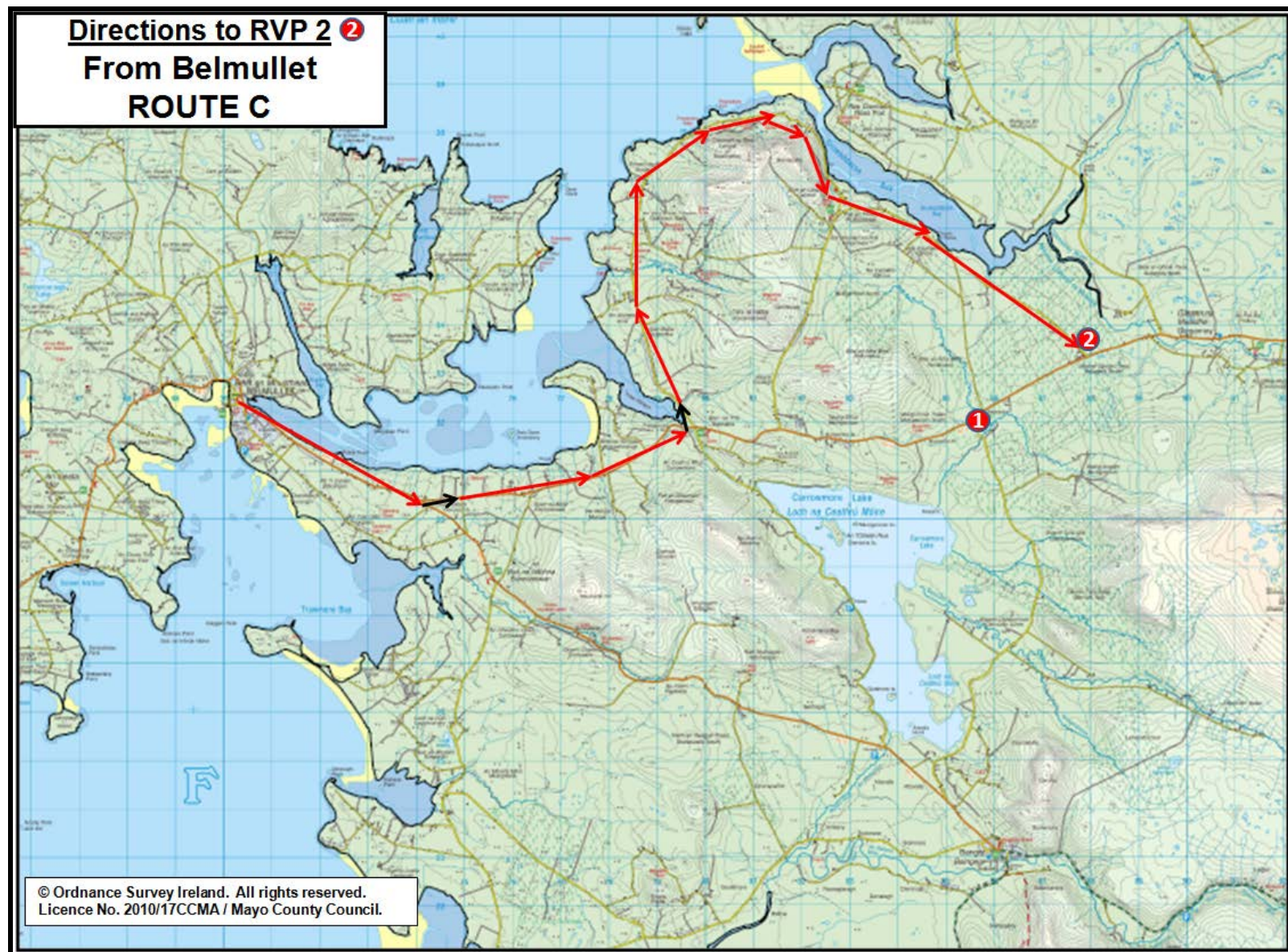


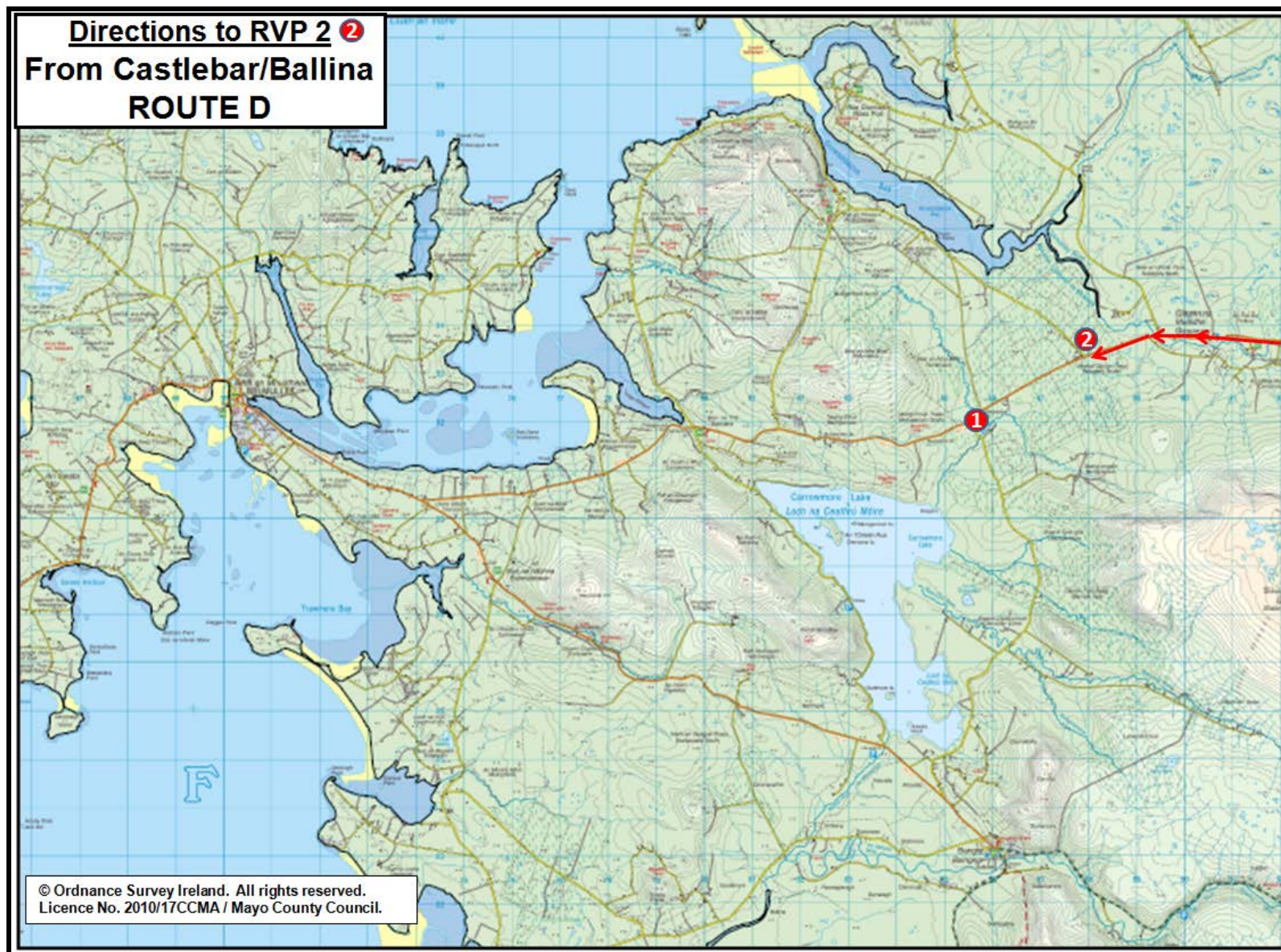
APPENDIX 2 ROUTE MAPS TO THE RENDEZVOUS POINTS











APPENDIX 3 DIRECTIONS TO THE RENDEZVOUS POINTS (RESPONDING PROTOCOLS)

RVP 1

Route A – From Belmullet



- From Belmullet, proceed 5.0 km East on R313 (Belmullet to Bangor Erris road) to junction with R314 Ballycastle road.



- Turn left (East) on R314 Ballycastle road. Proceed for 12.4 km, travelling through Barnatra.



- RVP 1 is located 6.1 km on the Ballycastle side of Barnatra. RVP 1 is located at the junction with the L1204 road.
- Vehicle should stand-by at Designated Holding Area, in a manner which does not cause obstruction to other emergency services access / egress to incident.
- This is RVP 1

RVP 1

Route B – From Castlebar/Ballina



- From Bangor Erris, proceed West on R313 (Belmullet road) for 1.6 km.



- At junction with L1 204 (R314), sign posted for Gleann na Muidhe / Ceide Fields, turn right.



- Proceed Northwards for 8.0 km to T-Junction (junction with R314, Barnatra – Glenamoy road)
- Proceed to the designated holding area as directed and stand by to await further instruction

RVP 1

Route B – From Castlebar/Ballina



- Vehicle should stand-by at Designated Holding Area, in a manner which does not cause obstruction to other emergency services access / egress to incident.



- This is RVP 1

RVP 2

Route C – From Belmullet



- From Belmullet, proceed east on R313 (Belmullet to Bangor Erris road) to junction with R314 Ballycastle road.



- Turn left (East) on R314 Ballycastle road.



- Proceed to Barnatra.

RVP 2

Route C – From Belmullet



- Turn left (North) at Barnatra and follow L1202 for An Tinbhear (Inver).



- Continue on L1202 for Belagally South, to junction with R314 Ballycastle – Belmullet road. **RVP 1 is located at this junction.**

Vehicle should stand-by at Designated Holding Area, in a manner which does not cause obstruction to other emergency services access / egress to incident.

RVP 2

Route D – From Castlebar/Ballina



- From Ballycastle, Proceed West along R314 Belmullet road.

- Continue on through Glenamoy



- Proceed past Glenamoy on R314 to junction with L1202 road (signposted for Pullathomas).



- RVP 1 is located at this junction.

Vehicle should stand-by at Designated Holding Area, in a manner which does not cause obstruction to other emergency services access / egress to incident.

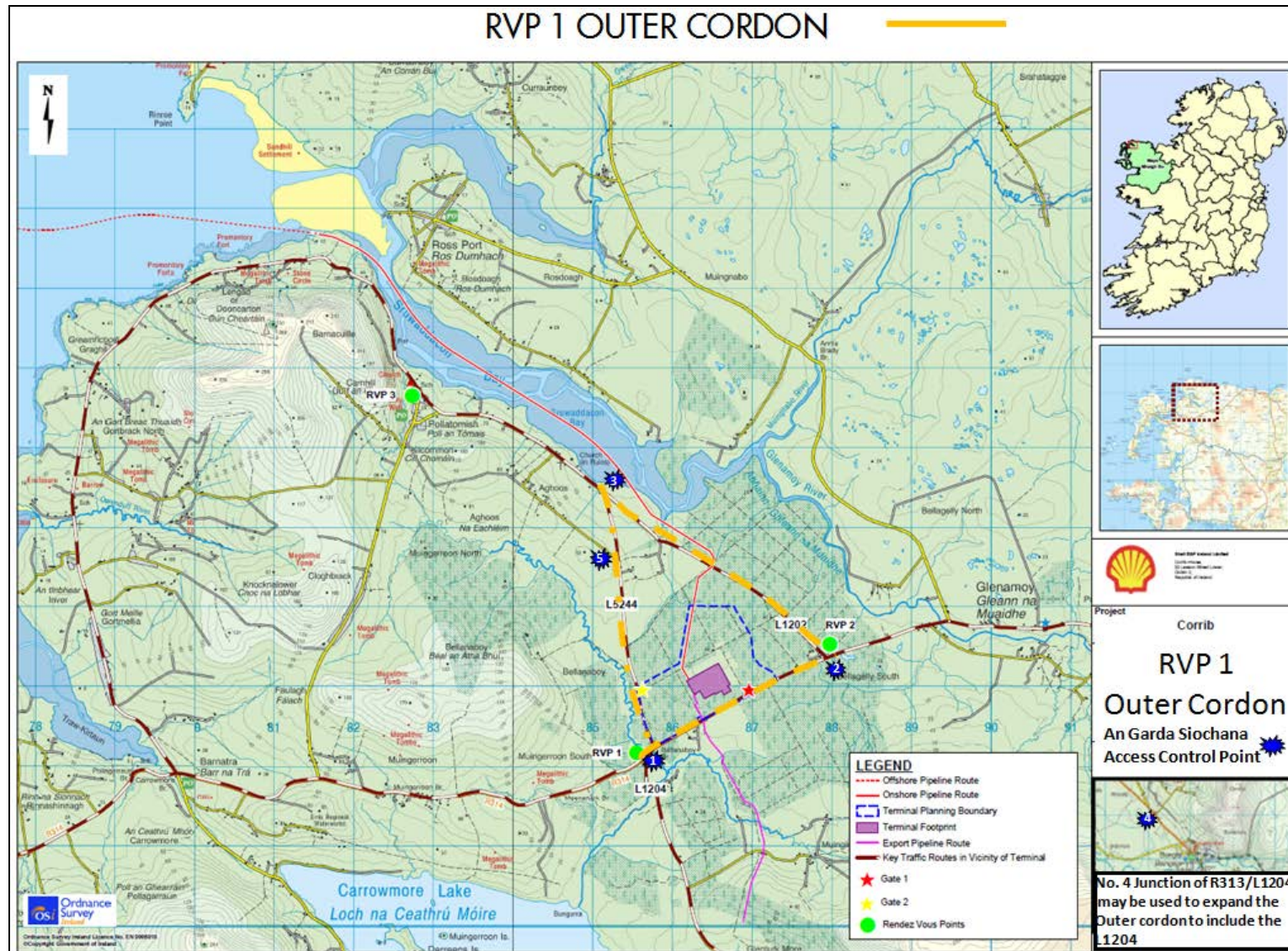


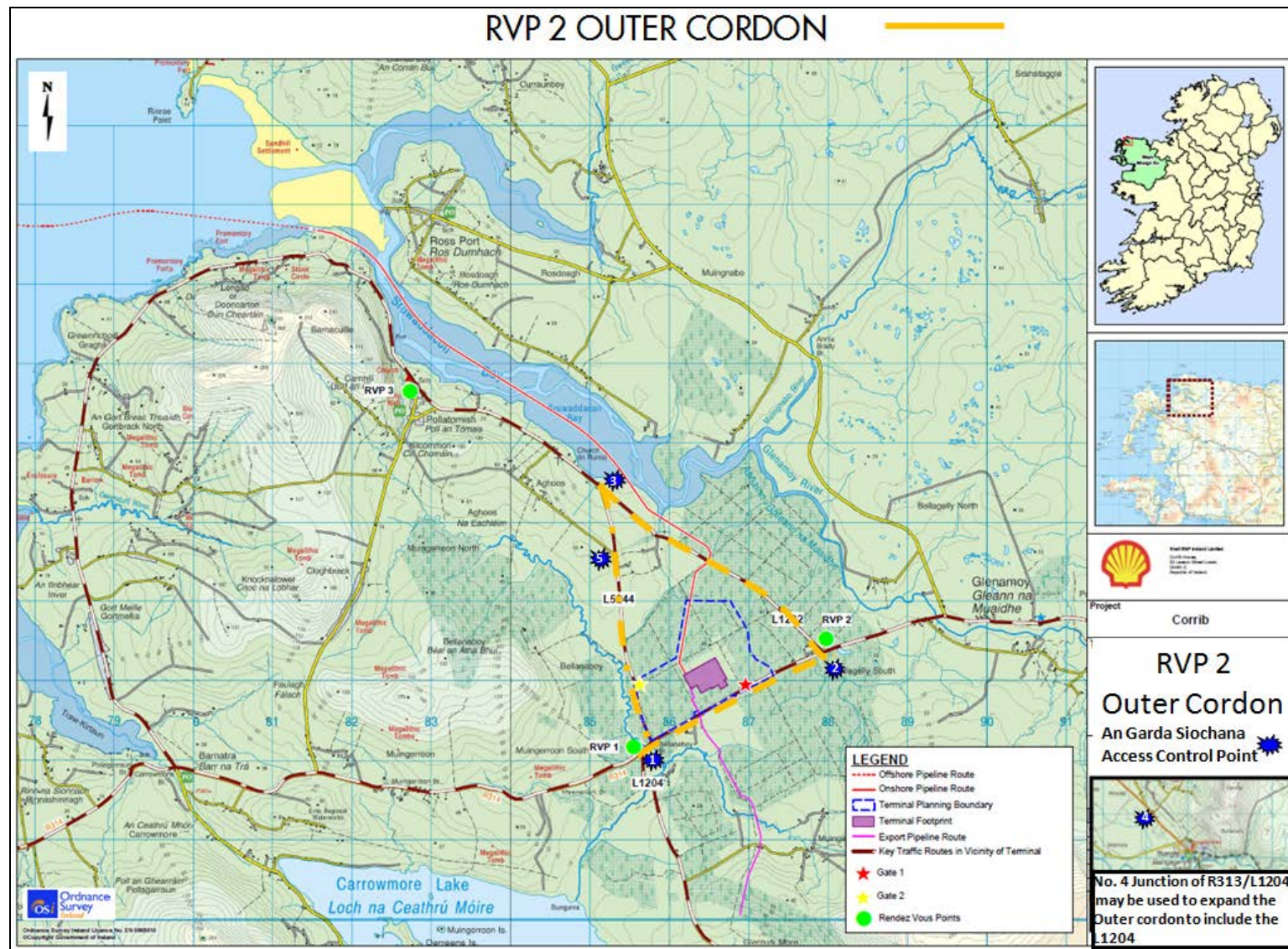
Emergency Services Arrival

- When requested, proceed to the incident. The following rules apply
 - Drive at a safe speed, to the left hand side of the roadway.
 - Use dipped vehicle headlights at all times when driving within the Gas Terminal environs.
 - Use vehicle beacons at all times while driving within the Gas Terminal perimeter.
 - Give right of way to Ambulance Service vehicles which are exiting the incident scene with casualties.
 - Follow all instructions given by Gas Terminal Security personnel with regard to proceeding to the scene of the incident.



APPENDIX 5 OUTER CORDONS





APPENDIX 6 TRAFFIC CORDONS AND AN GARDA SÍOCHÁNA ACCESS CONTROL POINTS

