

## 1 Monitoring Data

### 1.1 Monitoring Equipment

Noise	One noise monitoring location currently being used- AN2. The sound meter records in the 1/3 octave band.
Weather Station	The data used for this reporting period was taken from the Terminal Site meteorological station.
TSS	The TSS analyser was operational from the 23 <sup>rd</sup> August.
Sondes	The results are displayed graphically.
Discharge pipe flow	The results are displayed graphically.

### 1.2 Rainfall Data

Date	Rainfall mm
18/08/2011	0.0
19/08/2011	6.2
20/08/2011	0.2
21/08/2011	2.0
22/08/2011	0.0
23/08/2011	7.8
24/08/2011	4.4
Total	20.6

### 1.3 Summary

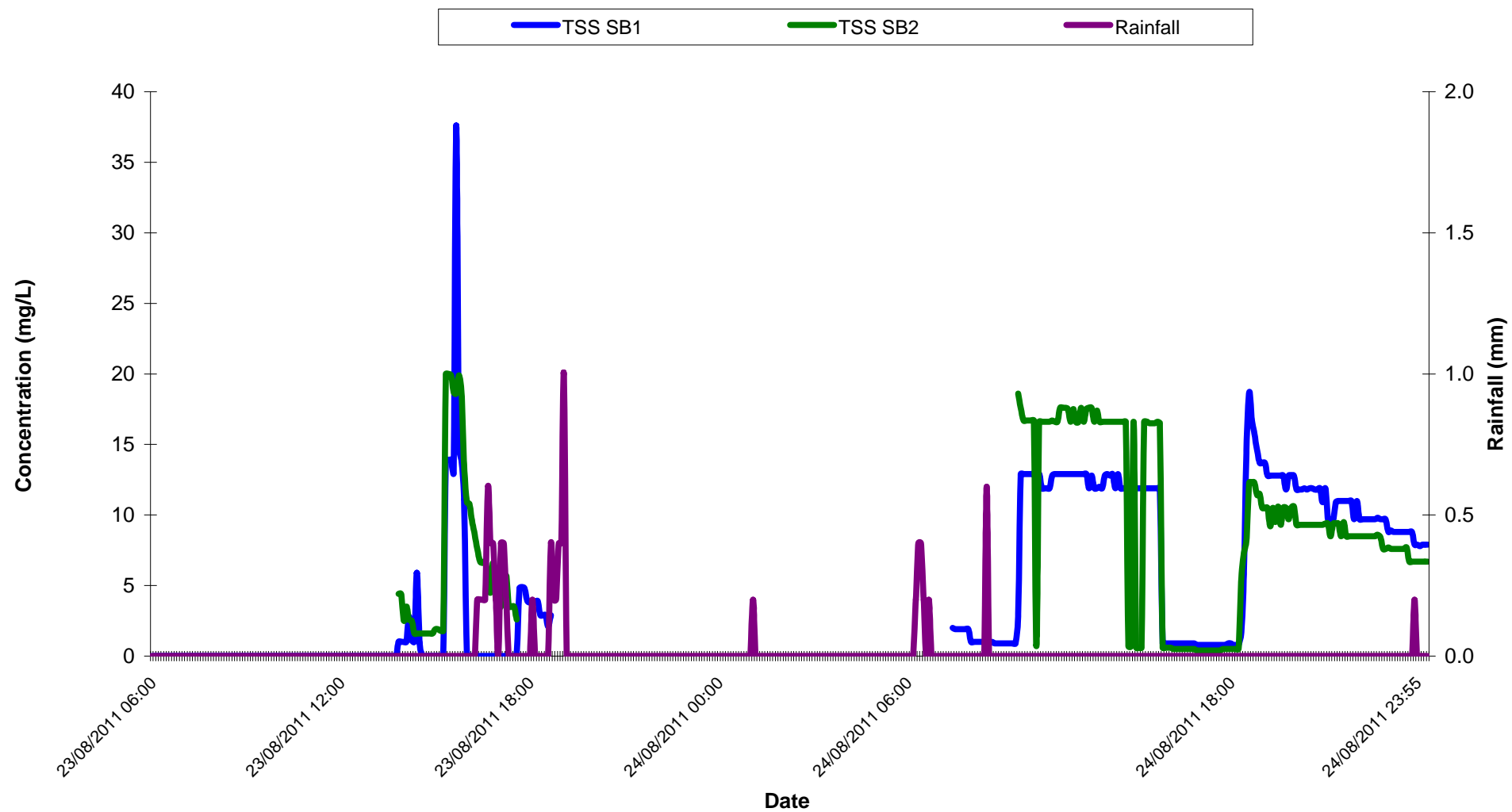
Environment	Comments
Weather	There was a total of 20.6mm of rainfall during the reporting period, with a temperature range of 6.9°C to 17.8°C.
Noise	Noise levels recorded were all within the permitted noise ranges.
Surface Water	Commissioning of the surface water treatment plant commenced on Monday August 22 <sup>nd</sup> . During commissioning, water was recycled until the unit became operational on Tuesday August 23 <sup>rd</sup> . There were no exceedances during discharge of water. Any unusual results have explanations on the corresponding graphs. Three discharge events took place over the reporting period however the flow meter was not operational during the first discharge event.

## 2 Environmental Exceedances / Incidents / Complaint

No exceedance during the reporting period.

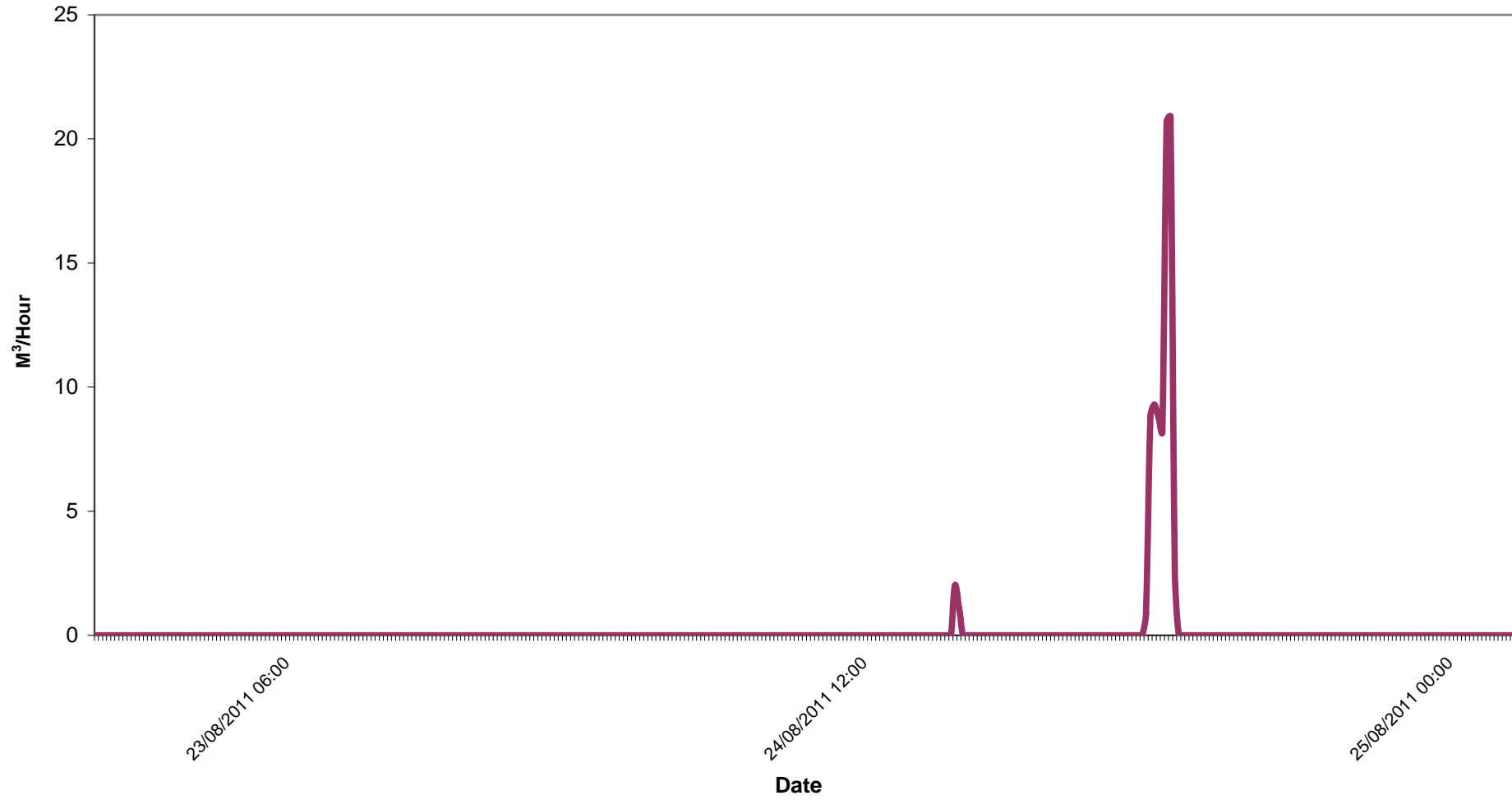
<b>Day Time Noise Monitoring Record Sheet</b>											
<b>Determinant Results</b>											
Location	Air Temp. (Min)	Air Temp. (Max)	Start Date	Time	Duration	Wind		Results dB			*Comments
						Speed (m/s)*	Direction (Degrees)	L <sub>Aeq</sub>	L <sub>Amax</sub>	L <sub>Amin</sub>	
<b>Action Limit</b>								<b>60.0</b>			
<b>Target Limit</b>								<b>65.0</b>			
AN2	8.6	16.9	18/08/2011	14:46:00	01:00	1.6	260.2	53.7	80.7	32.2	
AN2	7.9	16.0	19/08/2011	10:53:00	01:00	4.3	197.0	56.8	85.3	35.7	
AN2	10.3	17.4	22/08/2011	13:35:00	01:00	1.2	230.1	57.7	83.3	26.3	
AN2	8.5	17.7	23/08/2011	09:45:00	01:00	1.9	181.5	57.5	83.4	25.7	
AN2	6.9	15.2	24/08/2011	16:17:00	01:00	2.3	190.2	55.1	86.1	40	
* Wind speeds in excess of 5 m/s negatively impact noise readings (as per EPA Guidance Note on Noise Measurement).											

### Total Suspended Solids of Surface Water Week Ending 24/08/2011

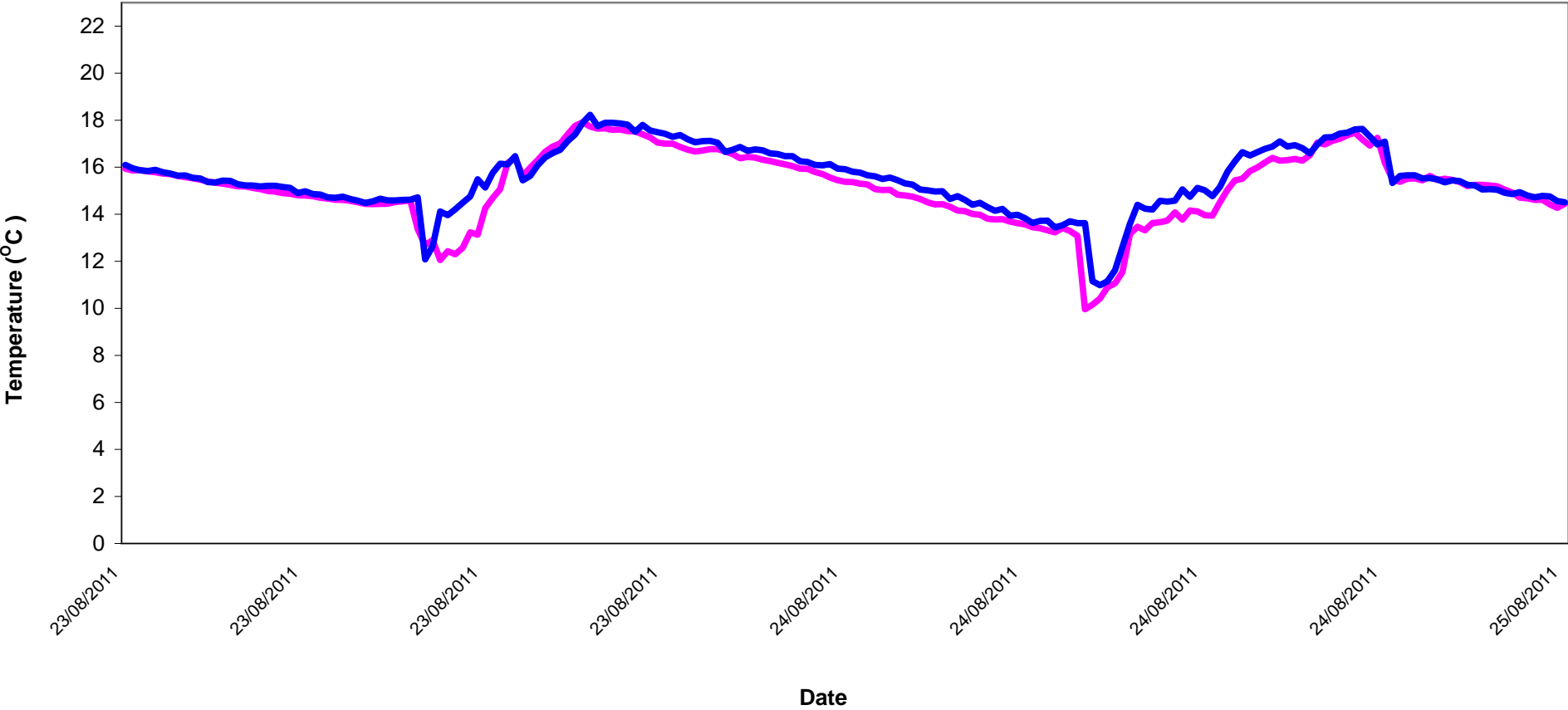


**Surface Water Discharge  
Weir Flow for Week Ending 24/08/2011**

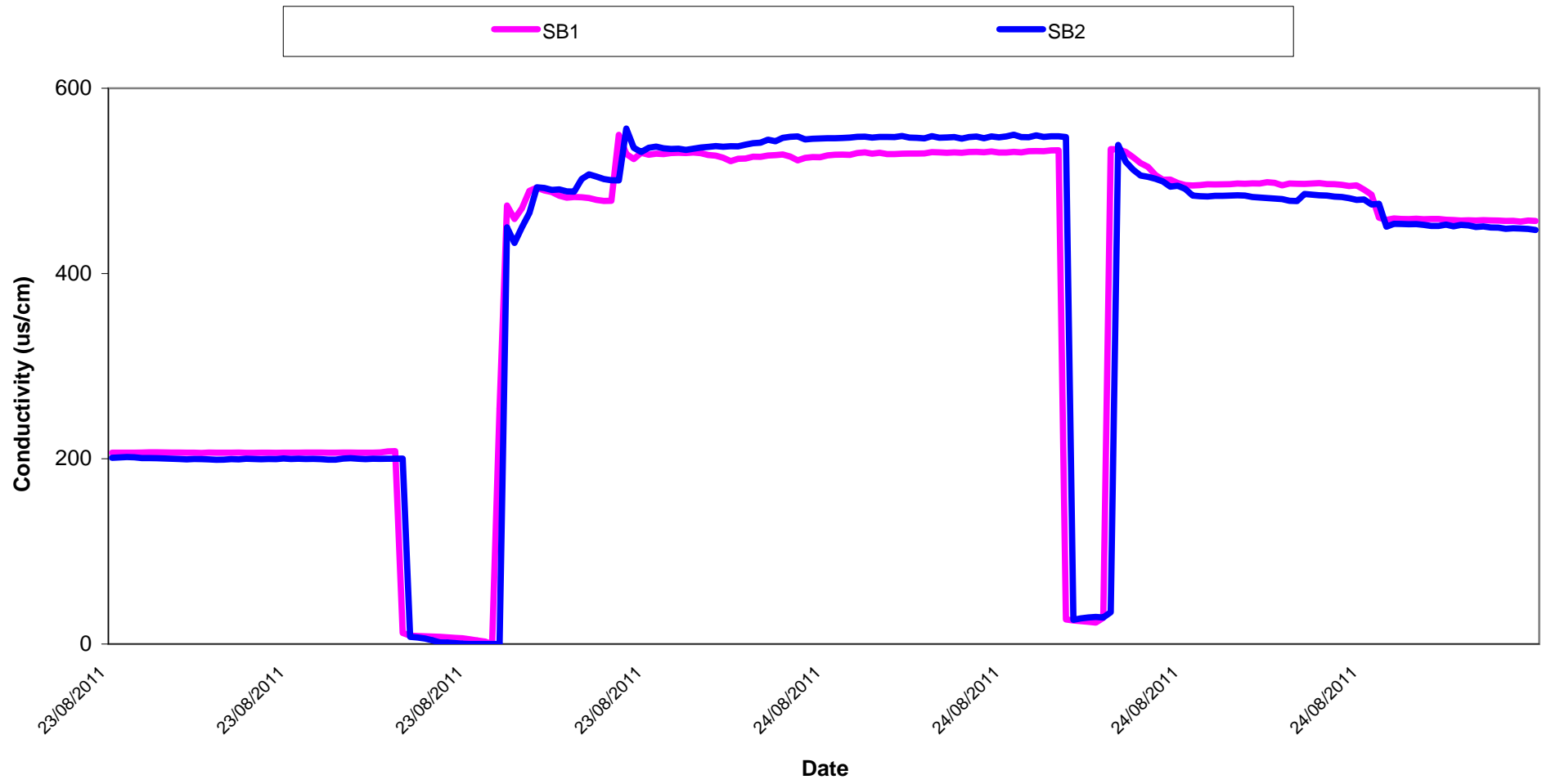
Water Discharge



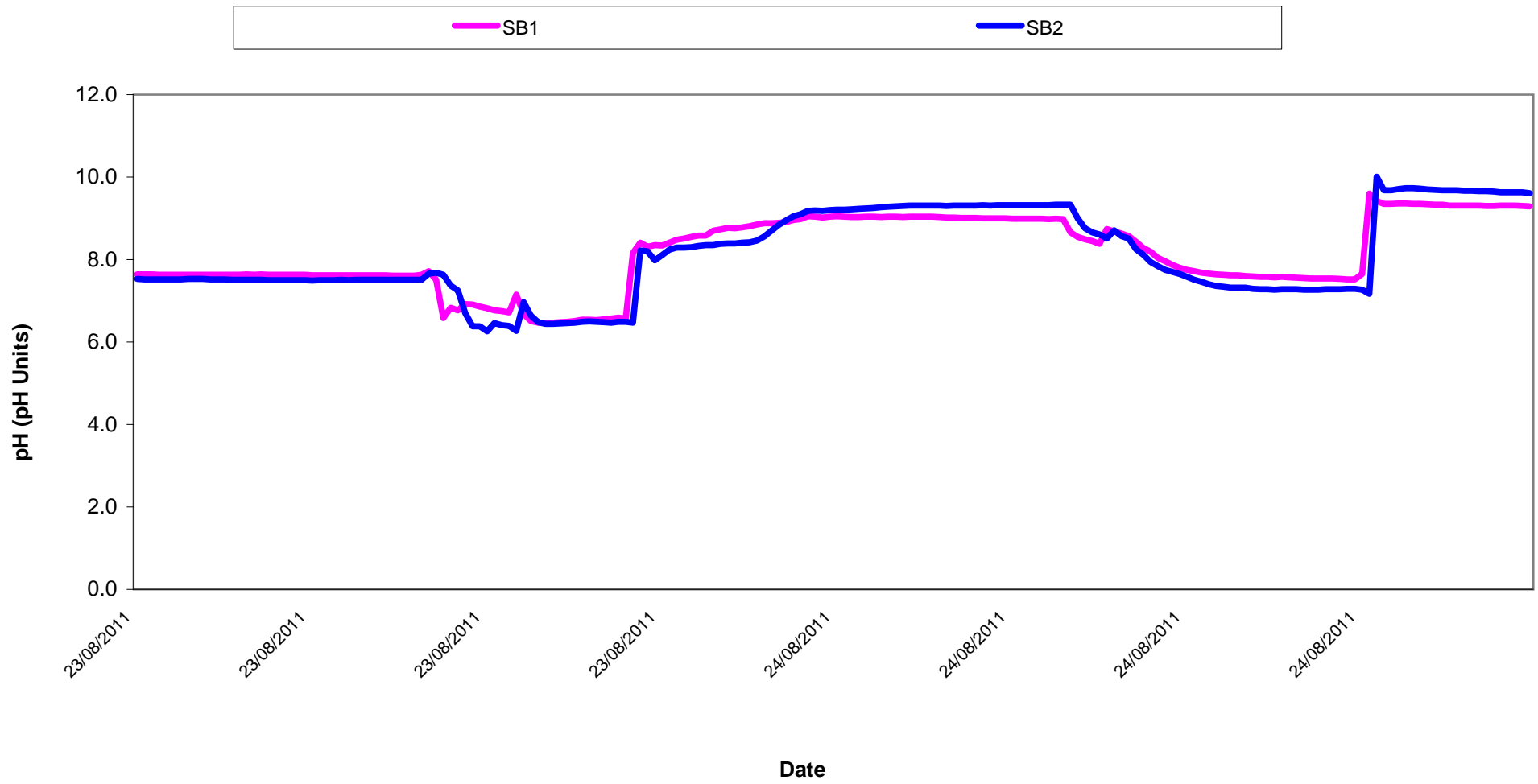
Temperature - Surface Waters Discharge  
Week Ending 24/08/2011



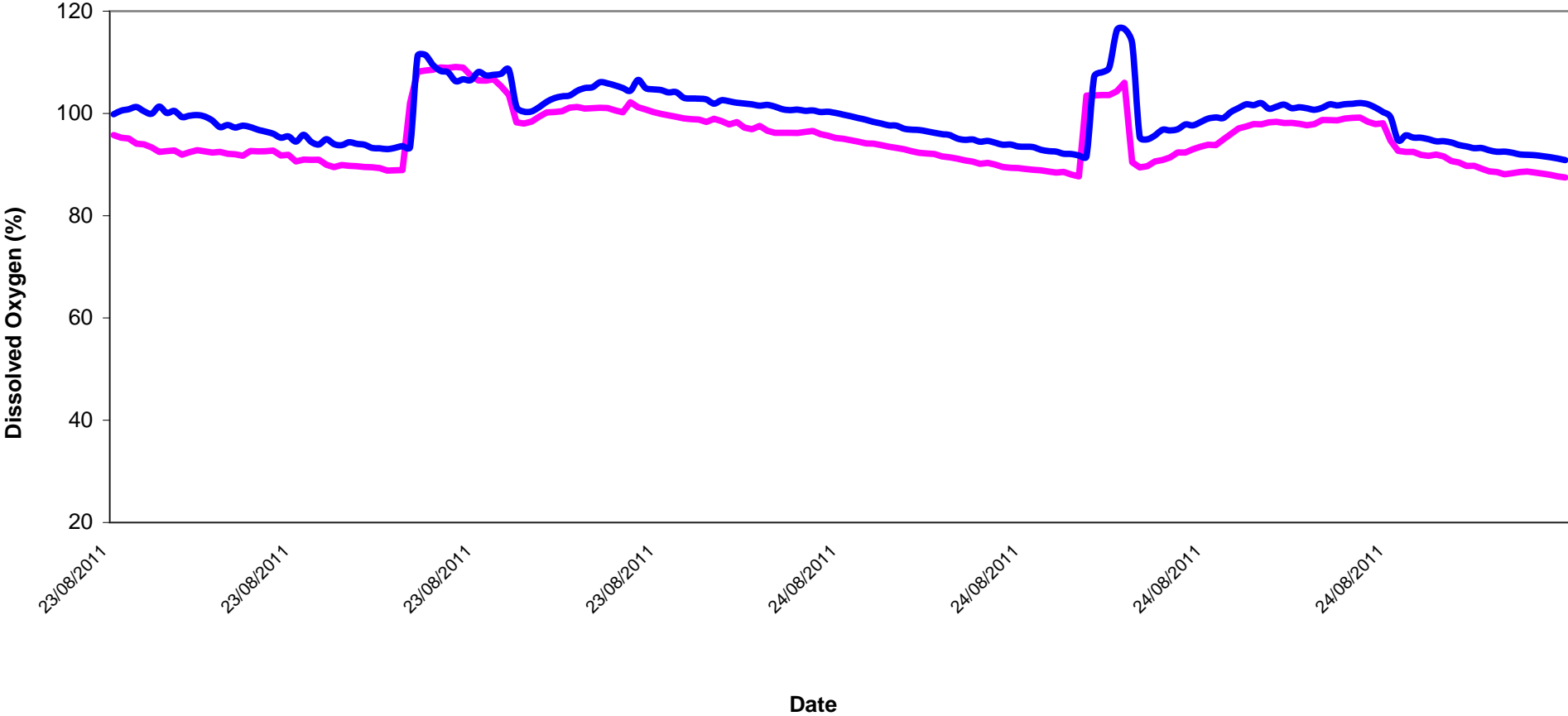
Conductivity - Surface Waters Discharge  
Week Ending 24/08/2011



### pH - Surface Waters Discharge Week Ending 24/08/2011



Dissolved Oxygen - Surface Waters Discharge  
Week Ending 24/08/2011





## **Appendix 1**

Appendix 1: Surface Water Monitoring Record Sheet- Onsite Monitoring							
Location	Date	Temp	DO	Cond.	Turbidity	pH	TDS
		C	% Sat	µS/cm	NTU	pH Units	
<b>Settlement Pond Monitoring</b>							
	18/08/2011	18.8	100.6	220	17.5	5.6	131
	19/08/2011	12.6	78.8	169	35.0	4.6	94
	22/08/2011	14.8	96.4	135	6.0	4.9	78
	23/08/2011	No sample available					
	24/08/2011	13.5	84.0	137	3.1	5.6	81
	Grey shaded areas denote parameters that cannot or were not analysed on-site.						
	= Indicative Only						
< LOD	= Below Limit of Detection		> LOD	= Above Limit of Detection			