

1 Monitoring Data

1.1 Monitoring Equipment

Noise	Two noise monitoring locations are currently being used – AN2 and NSR1. The sound meter records in the 1/3 octave band.
Weather Station	The data used for this reporting period was taken from the Terminal Site meteorological station.
TSS	There are TSS meters on the each of discharges on the Siltbuster.
Sondes	The results are displayed graphically.
Discharge pipe flow	The results are displayed graphically.

1.2 Rainfall Data

Date	Rainfall mm
03/11/2011	2.2
04/11/2011	2.2
05/11/2011	0.4
06/11/2011	0.2
07/11/2011	0.0
08/11/2011	0.0
09/11/2011	0.0
Total	5.0

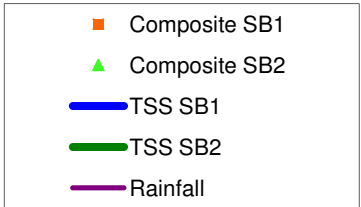
1.3 Summary

Environment	Comments
Weather	There was a total of 5mm of rainfall during the reporting period, with a temperature range of 1.3°C to 14.0°C.
Noise	There were no noise level exceedences during the reporting period.
Surface Water	There were no surface water exceedences during the reporting period.

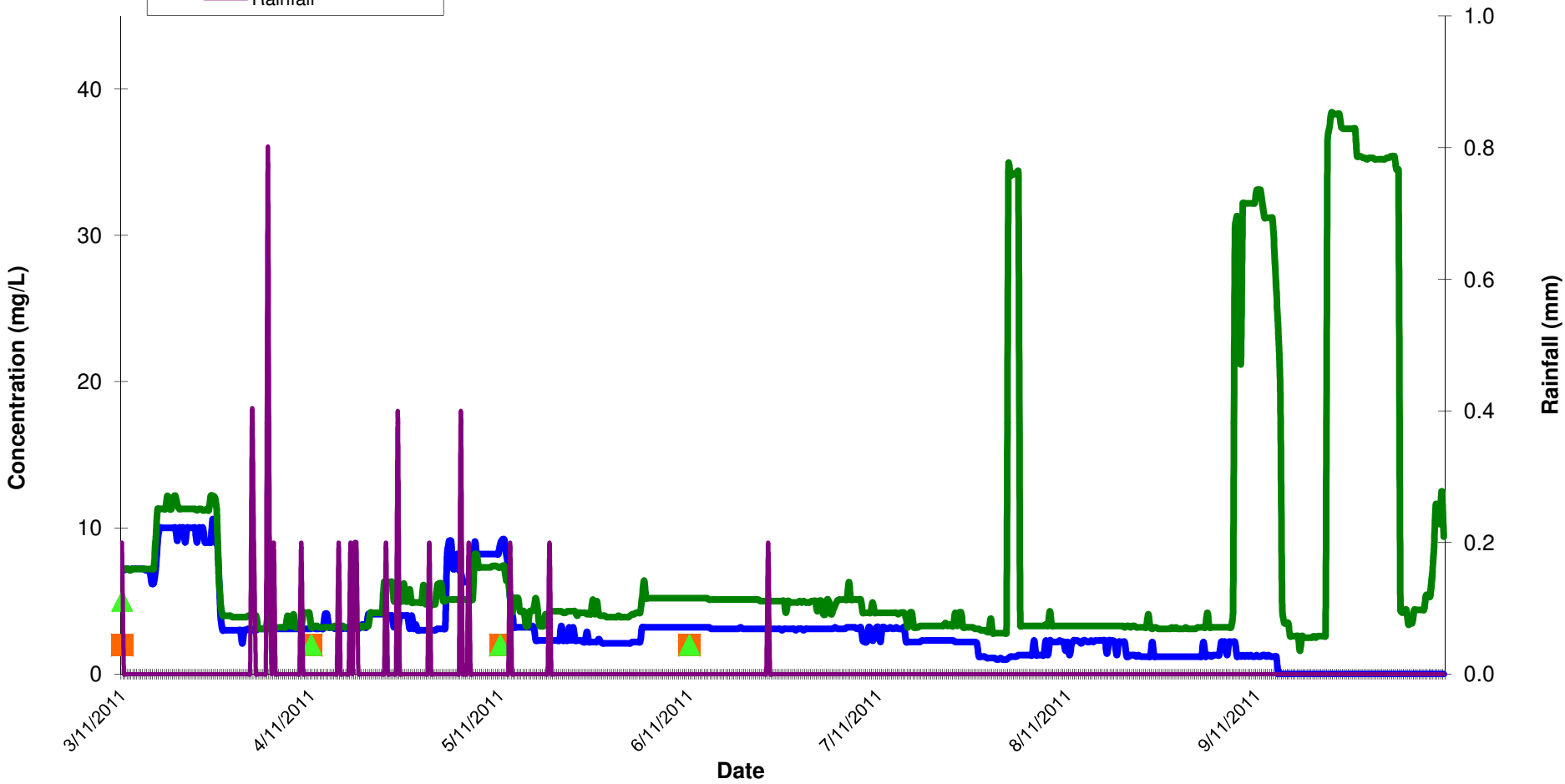
2 Environmental Exceedances / Incidents /

There were no environmental exceedences identified during the reporting period.

Day Time Noise Monitoring Record Sheet										
Determinant Results										
Location	Air Temp. (Min)	Air Temp. (Max)	Start Date and Time	Duration	Wind		Results dB			*Comments
					Speed (m/s)*	Direction (Degrees)	L _{Aeq}	L _{Amax}	L _{Amin}	
Action Limit							60.0			
Target Limit							65.0			
AN2			03/11/2011 16:00:00	1:00			57.8	84.7	30.0	
NSR1	6.6	14.0	03/11/2011 11:00:00	1:00	5.7	165.6	63.7	76.7	42.1	
AN2			04/11/2011 13:00:00	1:00			54.2	71.4	33.4	
NSR1	3.3	11.0	04/11/2011 17:00:00	1:00	1.9	203.2	52.9	75.8	30.6	
AN2			07/11/2011 09:00:00	1:00			56.4	80.7	31.8	
NSR1	2.0	11.6	07/11/2011 09:00:00	1:00	2.5	160.6	57.2	85.9	32.6	
AN2			08/11/2011 12:00:00	1:00			54.0	76.9	32.2	
NSR1	5.8	10.9	08/11/2011 16:00:00	1:00	4.1	144.5	61.0	76.9	34.3	
AN2			09/11/2011	1:00						Lost data due to technical error with noise meter
NSR1	8.0	13.0	09/11/2011 08:00:00	1:00	4.4	146.2	55.9	78.9	33.5	
* Wind speeds in excess of 5 m/s negatively impact noise readings (as per EPA Guidance Note on Noise Measurement).										
** Allowance of +/- 1.5dB accuracy of sound level meter (ref: IEC 61672 (2002-2005))										
The results show the maximum Laeq(1hr) for each day of monitoring										

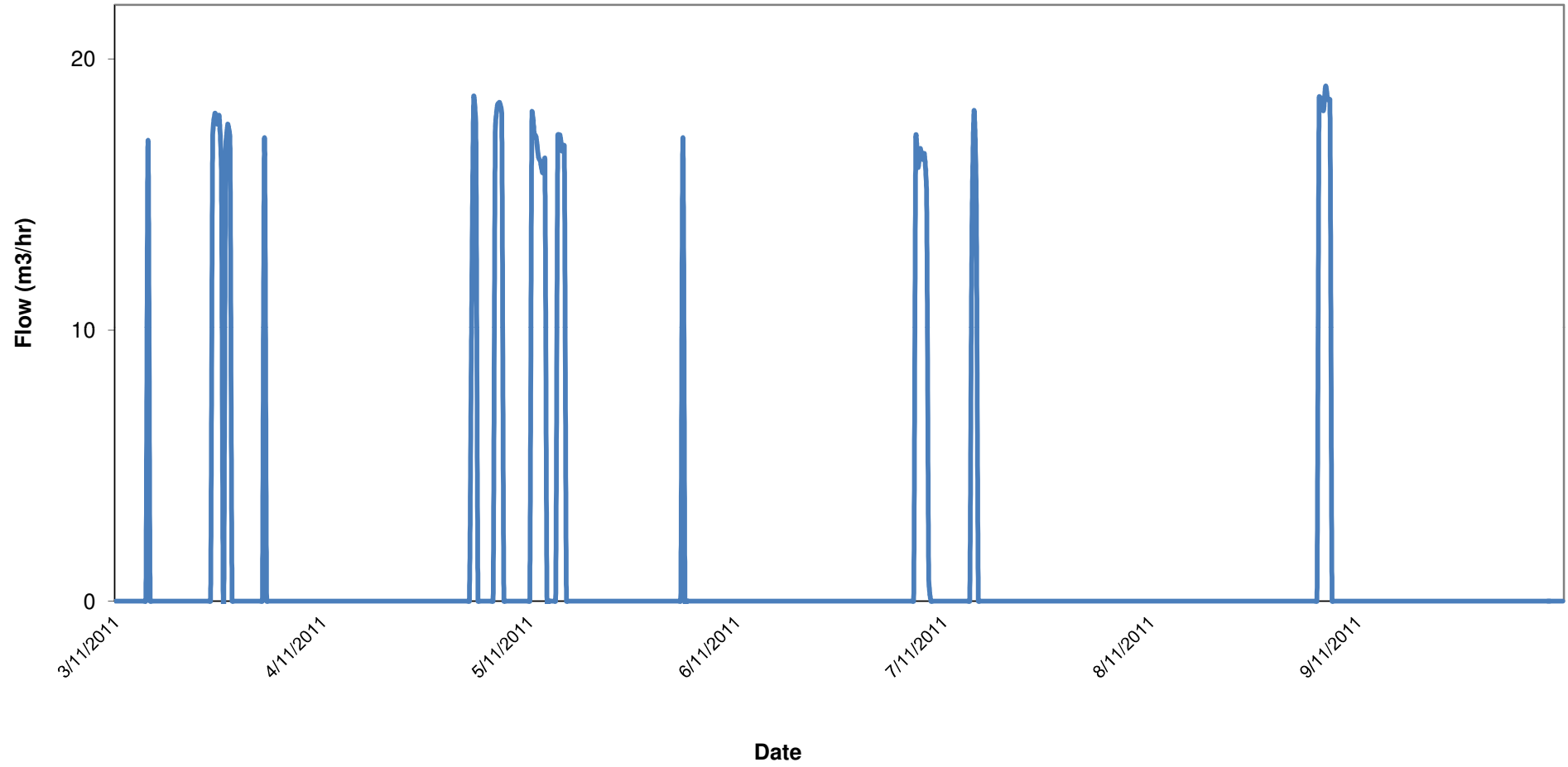


Total Suspended Solids Week Ending 09/11/2011

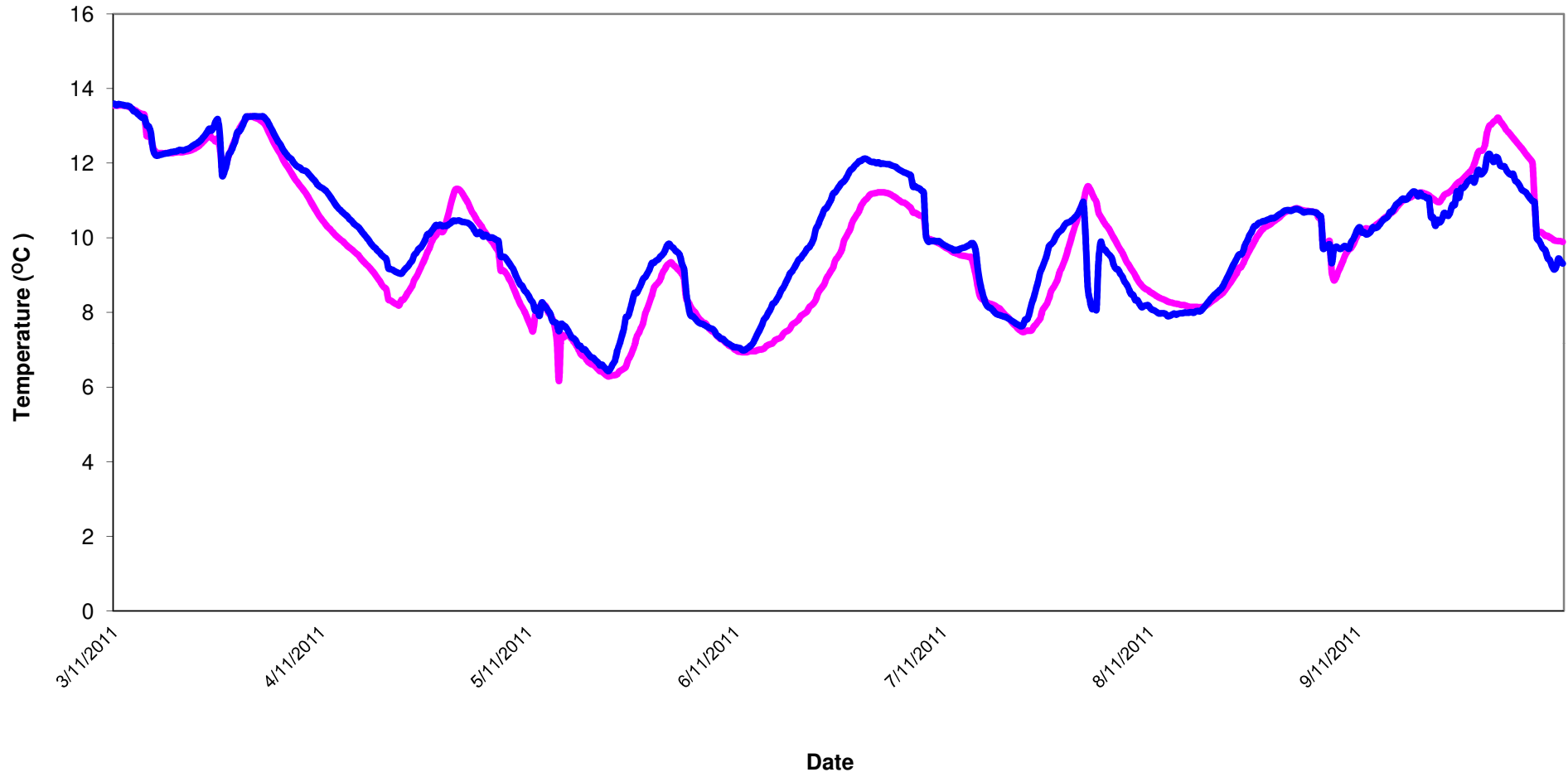


Flow - Surface Waters Discharge Week ending 09/11/2011

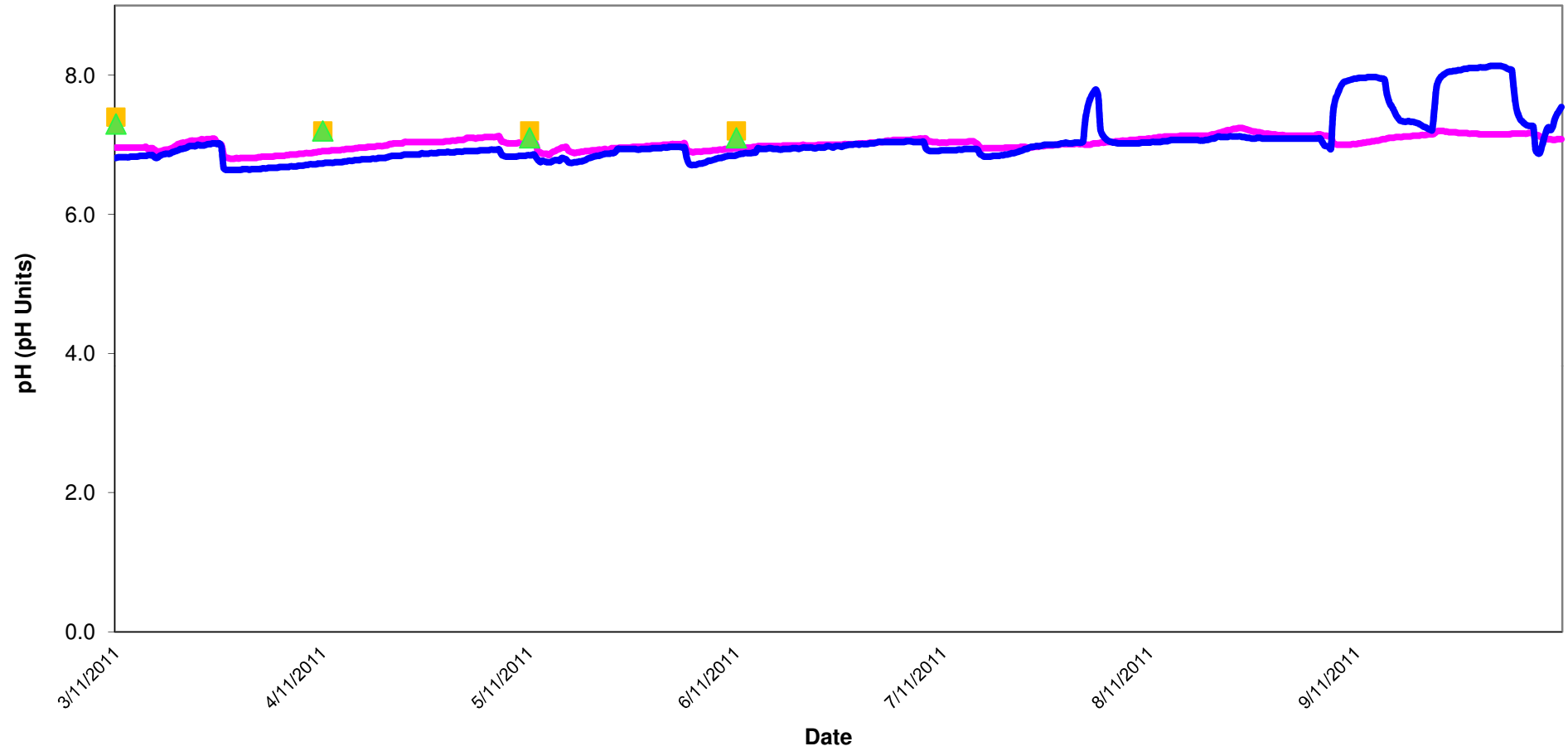
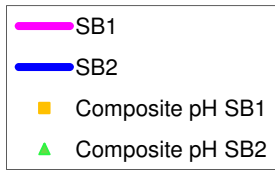
— Discharge



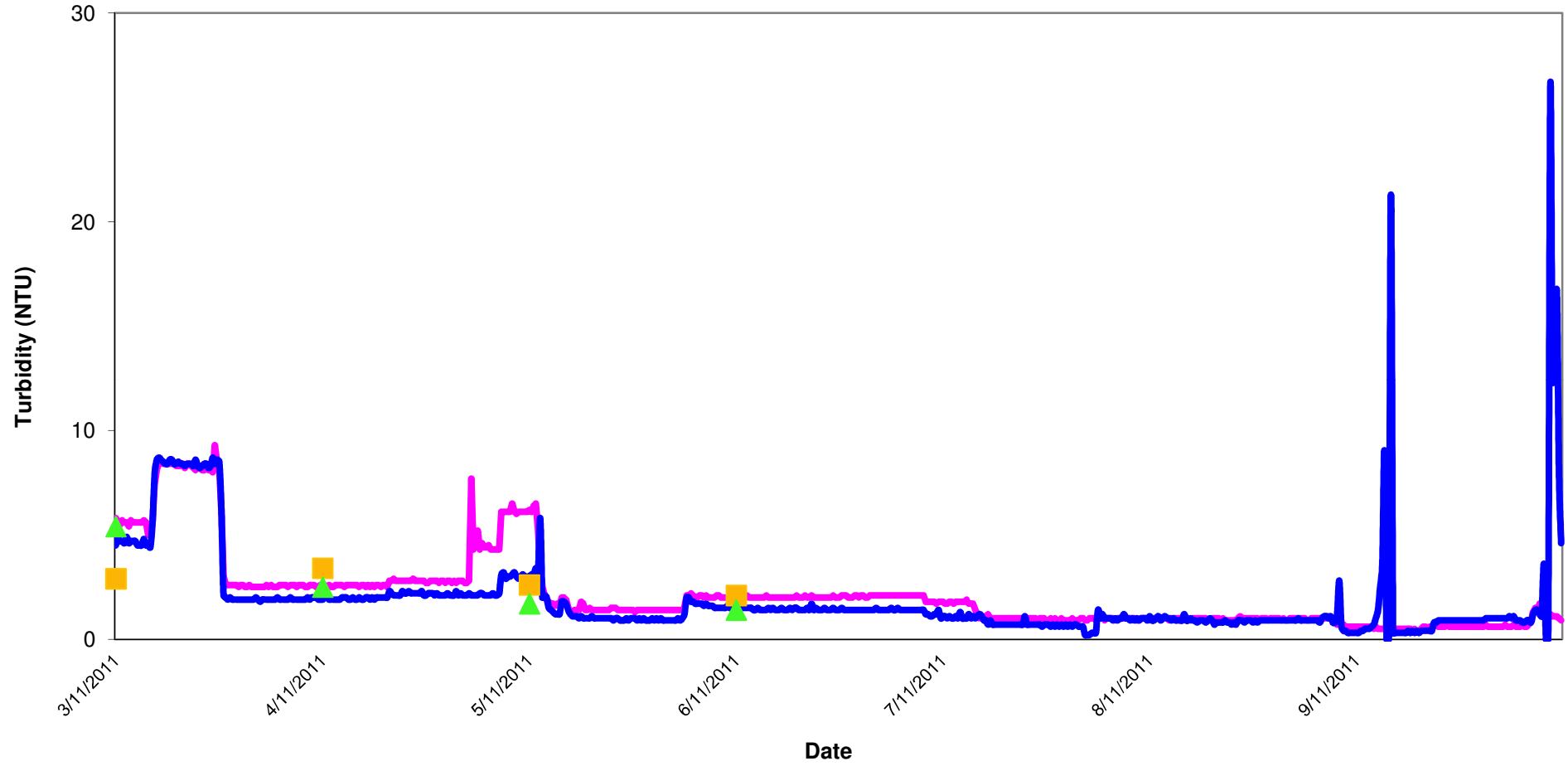
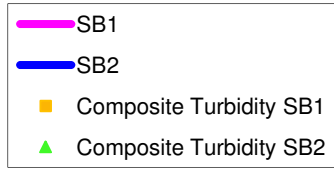
Temperature - Surface Waters Discharge Week ending 09/11/2011



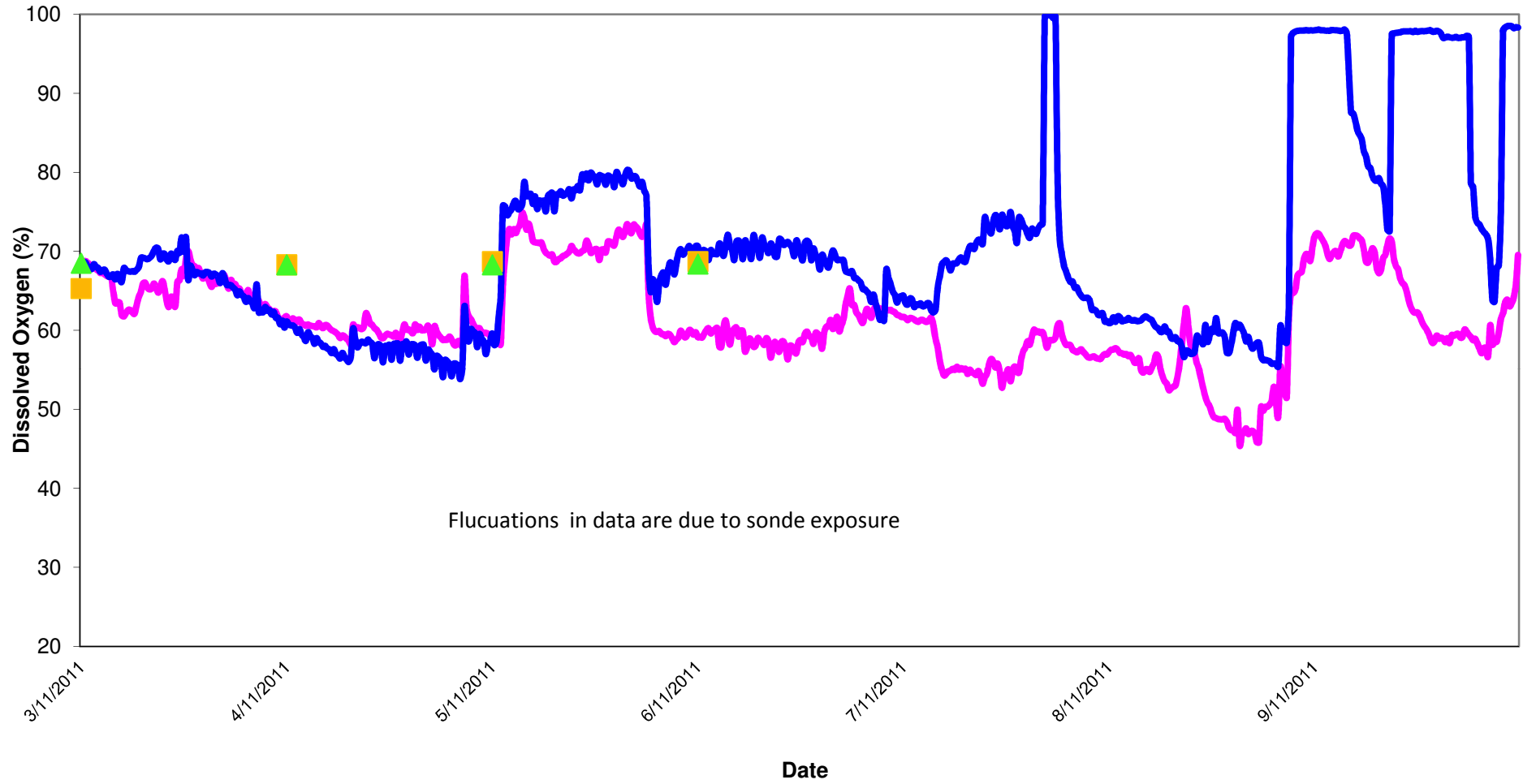
pH - Surface Waters Discharge Week Ending 09/11/2011



Turbidity - Surface Waters Discharge Week Ending 09/11/2011



Dissolved Oxygen - Surface Waters Discharge Week Ending 09/11/2011



Appendix 1

Appendix 1: Surface Water Monitoring Record Sheet- Onsite Monitoring							
Location	Date	Temp	DO	Cond.	Turbidity	pH	TDS
		C	% Sat	µS/cm	NTU	pH Units	ppm
DL2	03/11/11	12.3	43.1	163	5.6	6.1	94
DL2	04/11/11	10.0	36.0	158	5.0	6.2	92
DL2	07/11/11	9.4	26.6	293	5.3	5.8	201
DL2	08/11/11	9.3	21.9	197	4.5	6.2	125
DL2	09/11/11	10.2	17.1	298	3.3	6.4	201
	Grey shaded areas denote parameters that cannot or were not analysed on-site (results given are from CLS Labs).						
	= Indicative Only						
< LOD	= Below Limit of Detection		> LOD	= Above Limit of Detection			